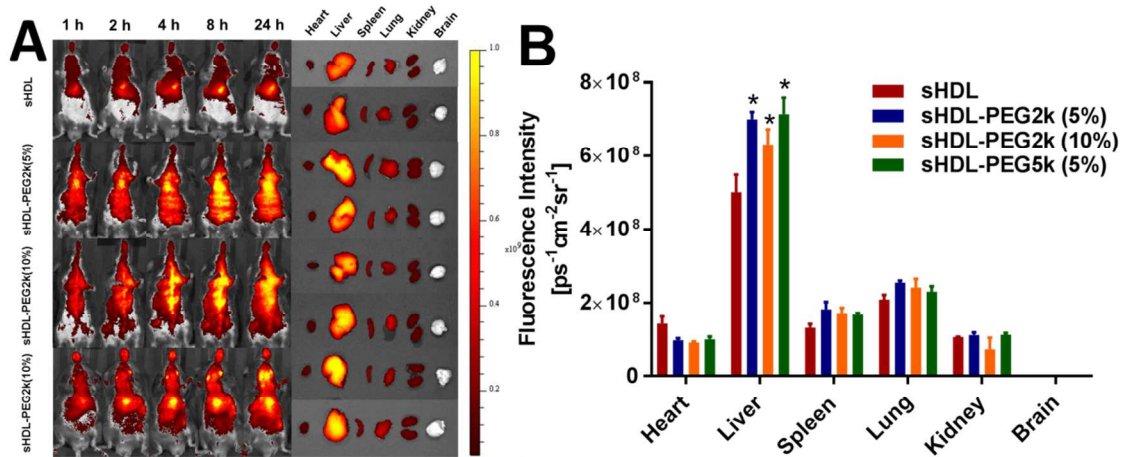
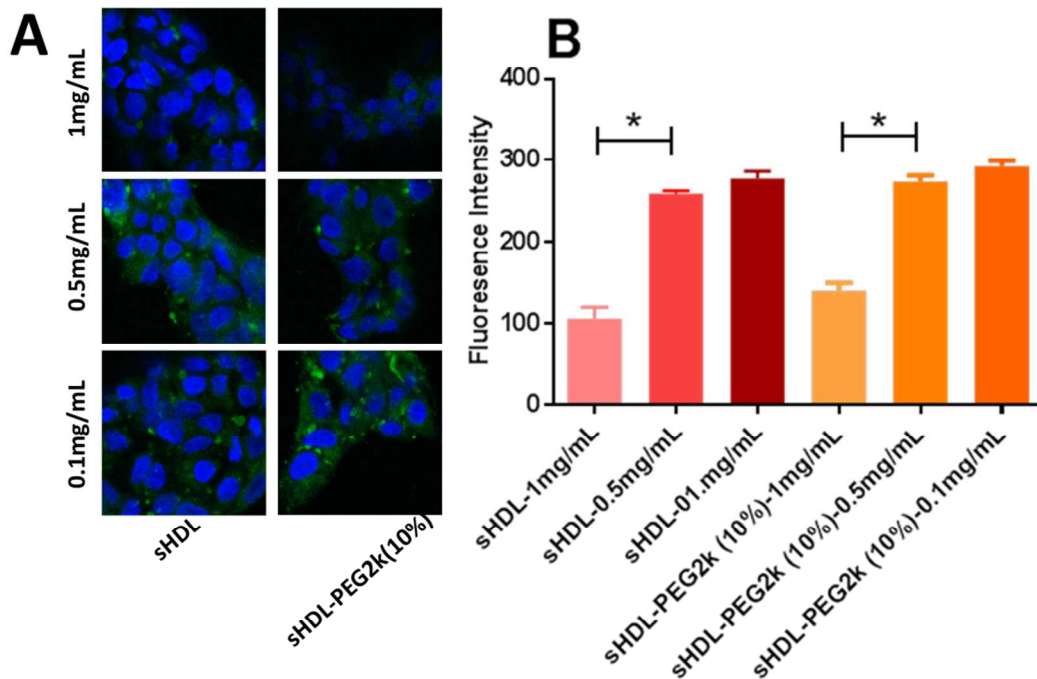


## Supplemental figures



Supplemental figure 1. The *in vivo* imaging of C57BL/6 mice after administration of sHDL, sHDL-PEG2k (5%), sHDL-PEG2k (10%) and sHDL-PEG5k (10%) at 1h, 2h, 4h, 8h, and 24h together with the *ex vivo* fluorescence images of isolated organs collected at 24 h post-injection (**Panel A**). The average fluorescence intensities of tissues were analyzed using Living image® software (**Panel B**). Data represent mean  $\pm$  SEM (n=3). \*:  $P < 0.05$  relative to sHDL group.



Supplemental figure 2. Cell uptake of bodipy-labelled cholesterol loaded in sHDL or sHDL-PEG (10%) by HepG2 cells after 1 h incubation. The particle concentrations are 1 mg/mL, 0.5 mg/mL and 0.1 mg/mL (**Panel A**). The fluorescent intensity was quantified by flow cytometry (**Panel B**). (\*) denotes statistical significant differences of fluorescence intensities, with p-values less than 0.05.