

Unravelling the Formation Mechanism of Dendritic Fibrous Nanosilica

Ayan Maity^a, Avik Das^b, Debasis Sen^b, S. Mazumder^b, Vivek Polshettiwar^{a*}

^aDepartment of Chemical Sciences, Tata Institute of Fundamental Research (TIFR), Mumbai 400005, India.

^bSolid State Physics Division, Bhabha Atomic Research Centre (BARC), Trombay, Mumbai 400085, India

Contents:

Fig. S1. Structural-similarity between CTAB (having C16 carbon chain) and alcohols carbon chain

Fig. S2. Bulk emulsion stability using 1-octanol and n-octane as co-surfactant.

Fig. S3. Confocal images of emulsion using various alcohol as co-surfactant and Nile red dye as contrast agent, using 543nm continuous-wave laser.

Fig. S4. Excess solvent addition test to know the dispersion phase of the emulsion.

Fig. S5. Additional SEM images of DFNS formed using various alcohols.

Fig. S6. N₂ Sorption Data of DFNS Synthesized using various Alcohols

Fig. S7. SEM Images of Aggregated DFNS

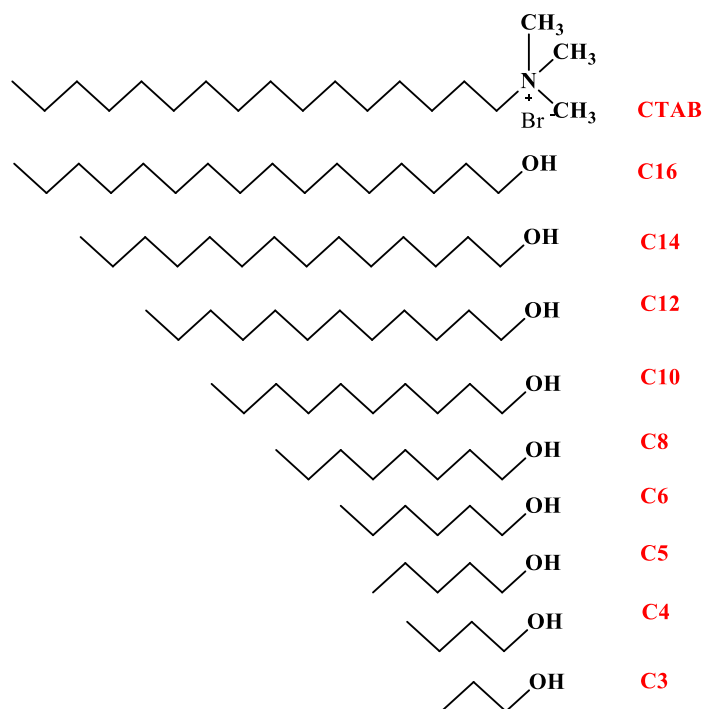


Fig. S1. Structural-similarity between CTAB (having C16 carbon chain) and alcohols carbon chain

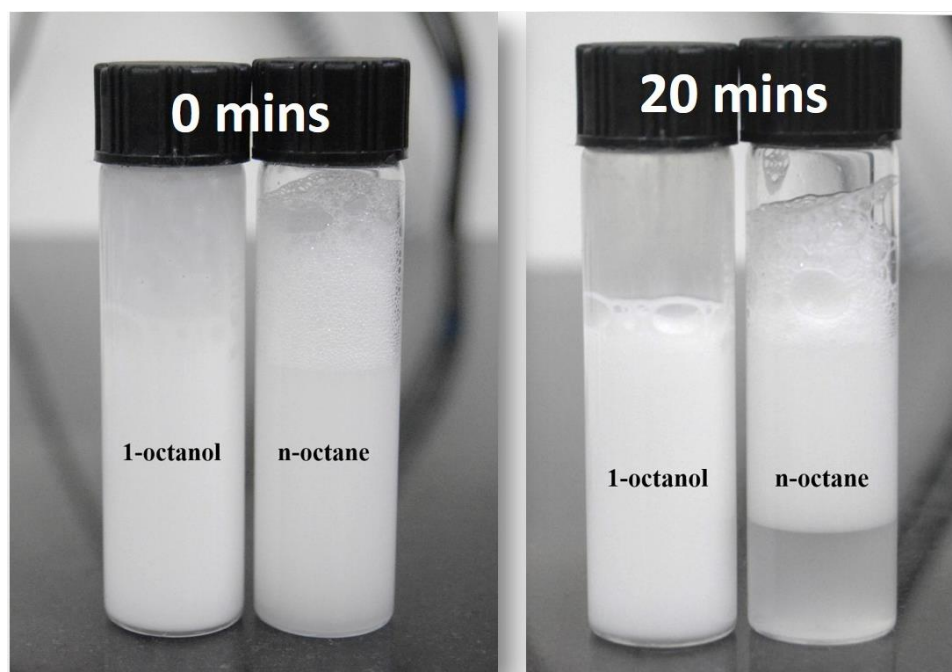


Fig. S2. Bulk emulsion stability using 1-octanol and n-octane as co-surfactant.

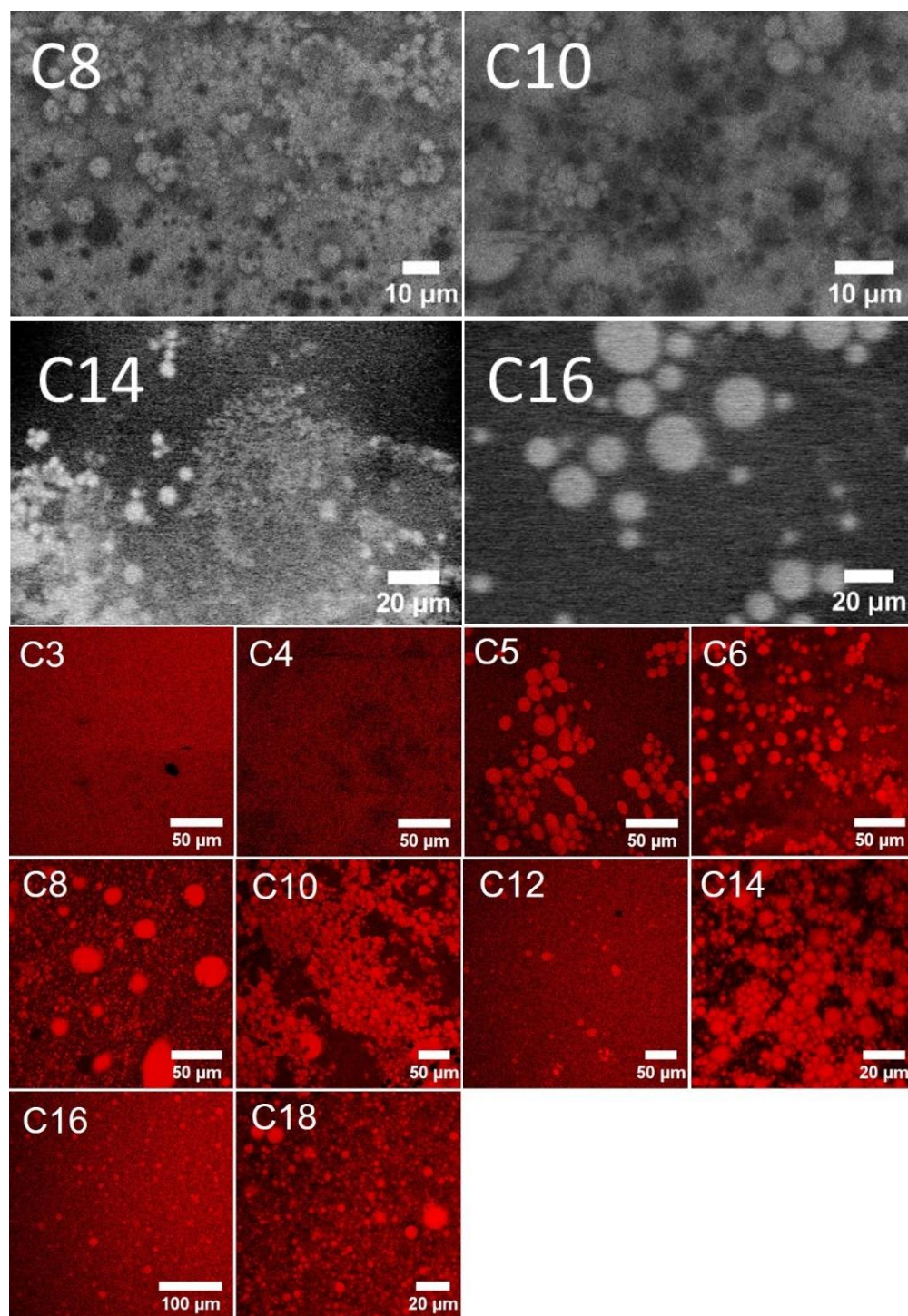
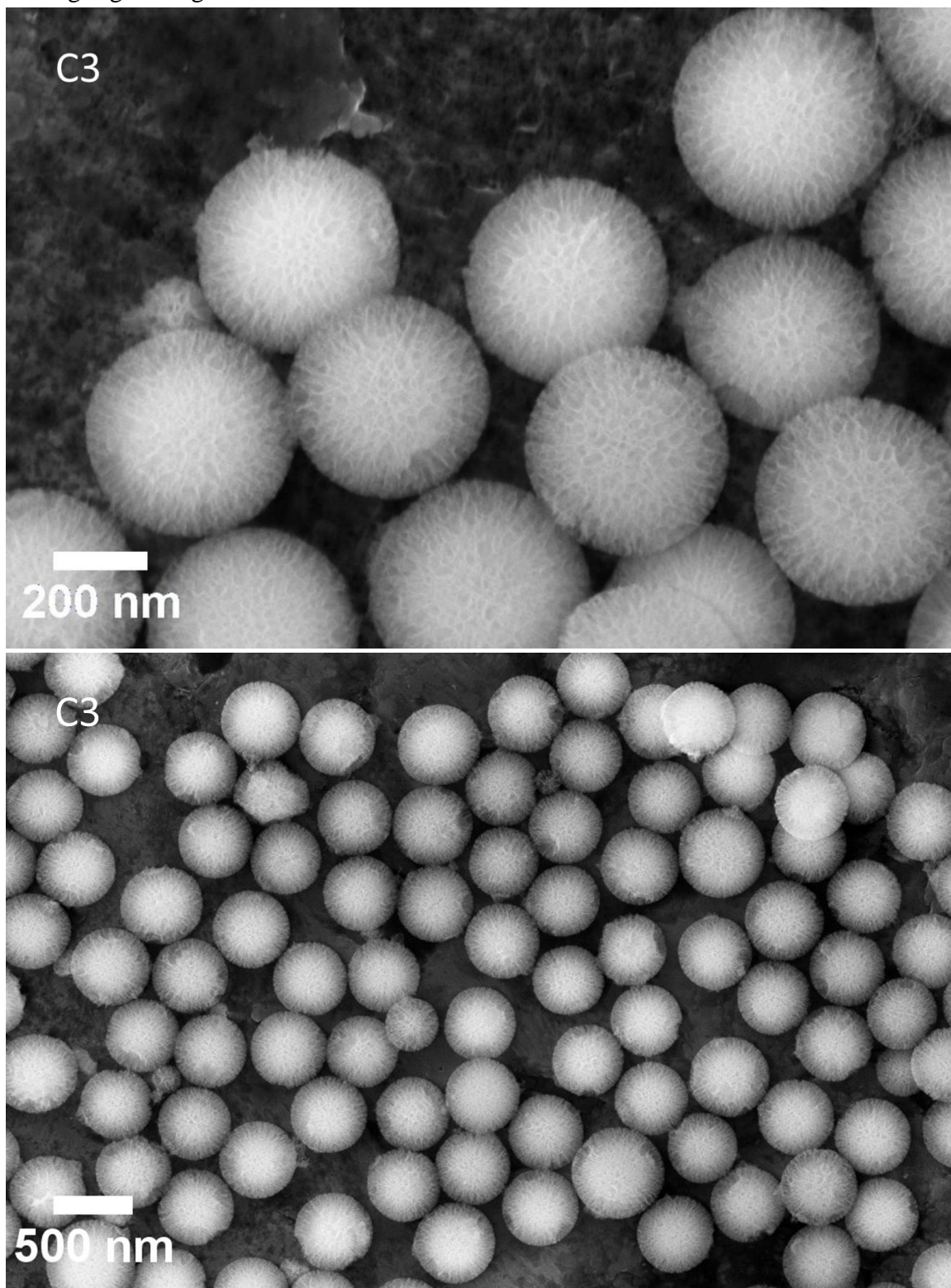


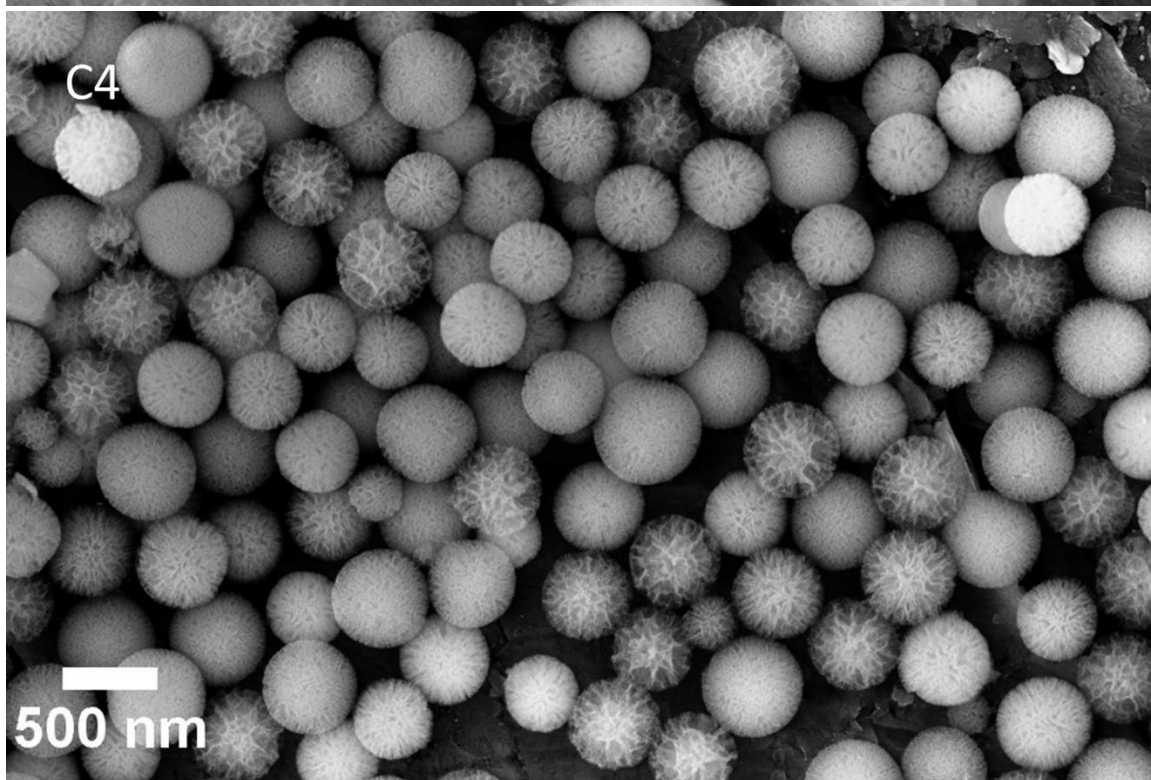
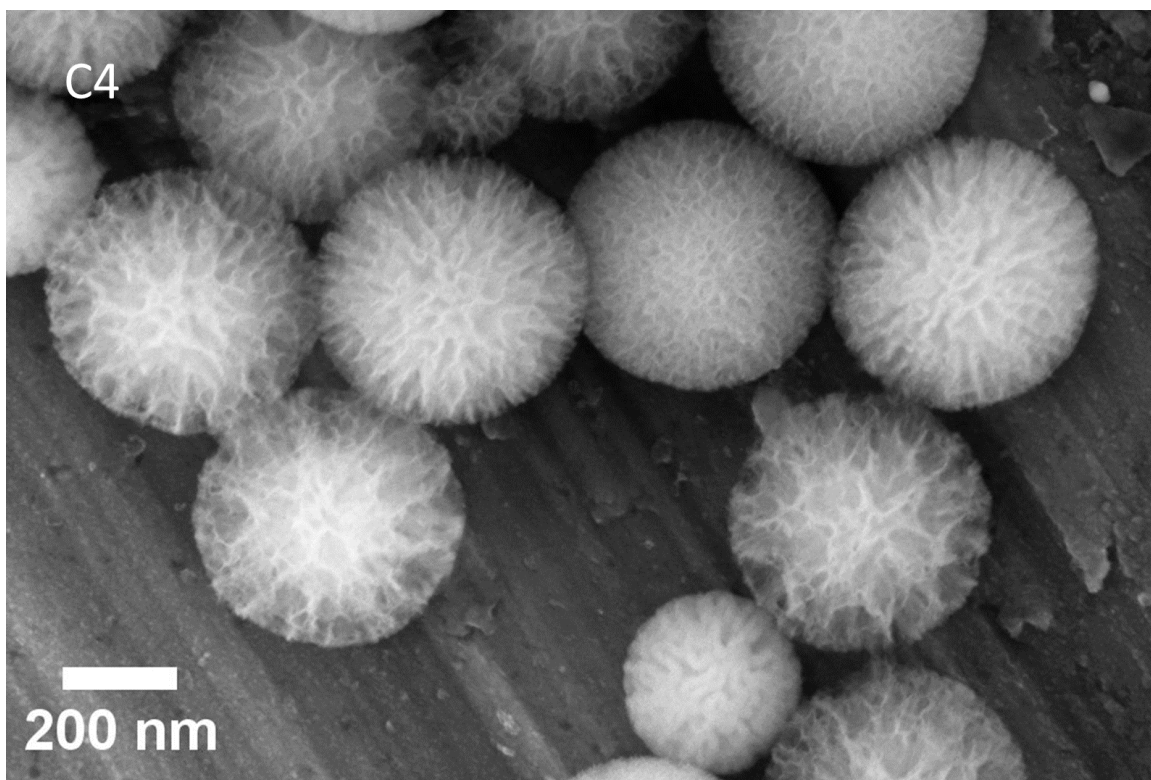
Fig. S3. (top) SEM (bottom) confocal images of emulsion using various alcohol as co-surfactant. For confocal imaging, Nile red dye as contrast agent and 543nm continuous-wave laser was used.

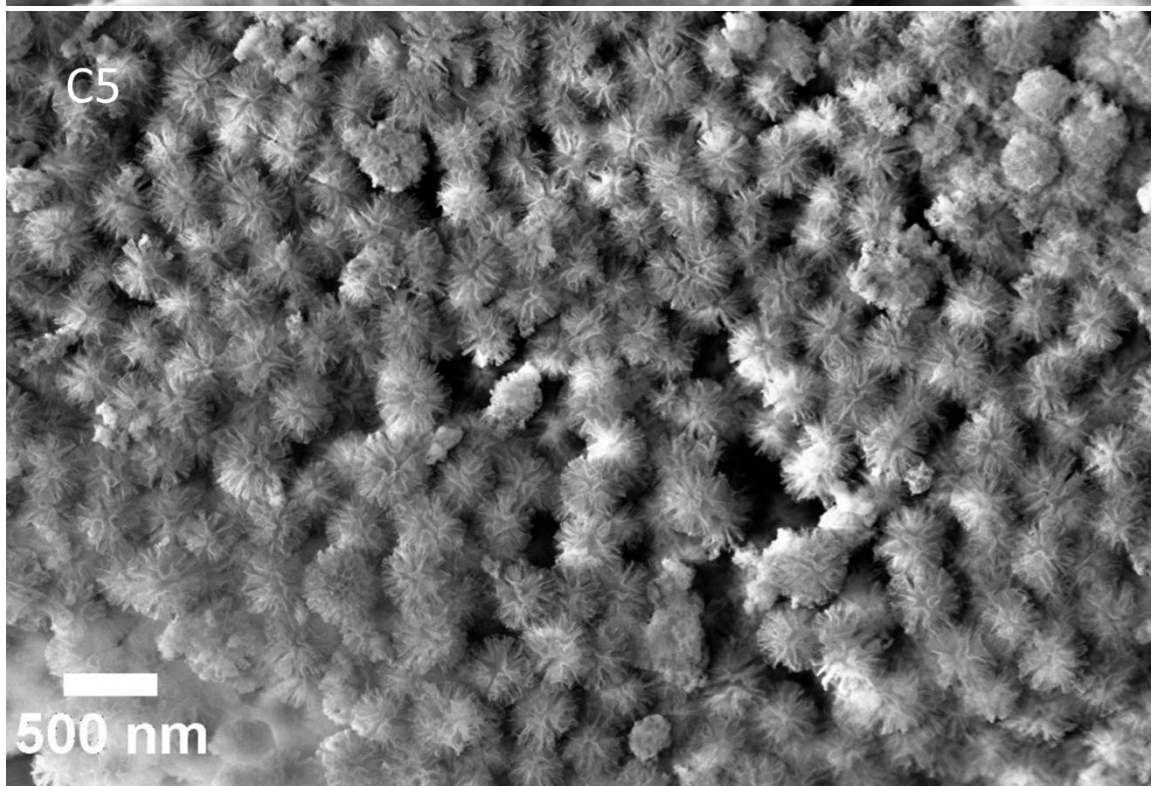
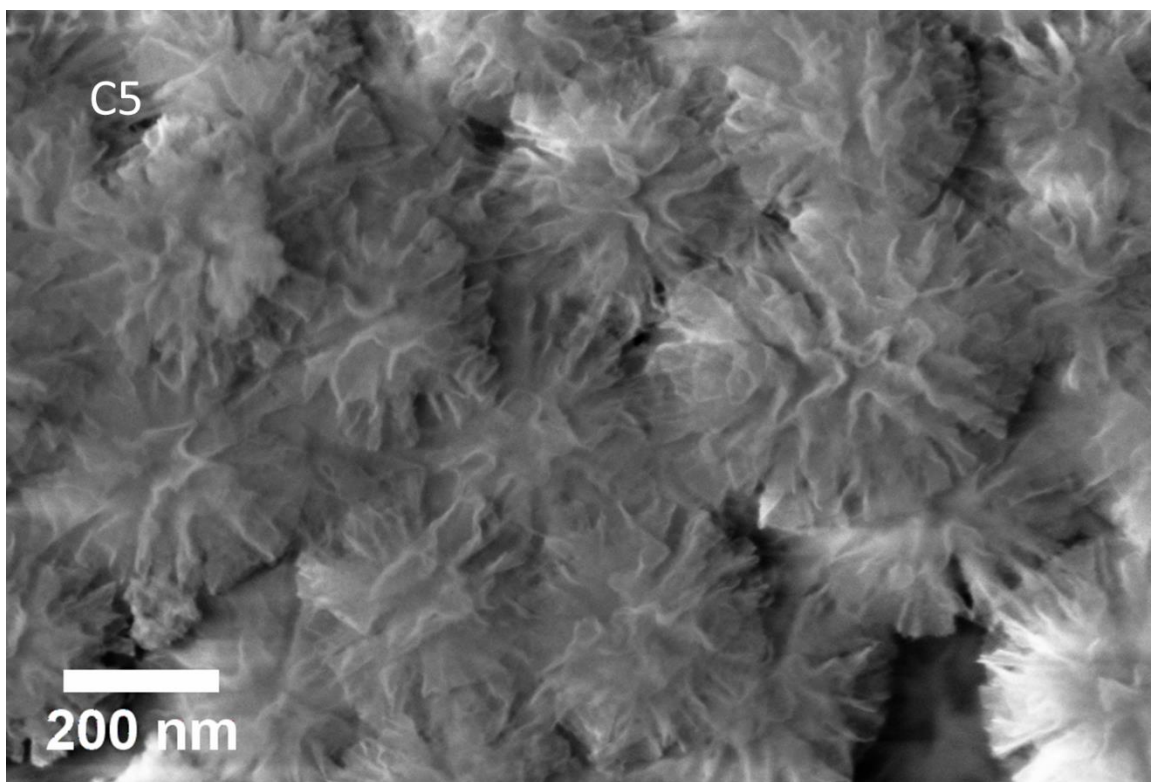


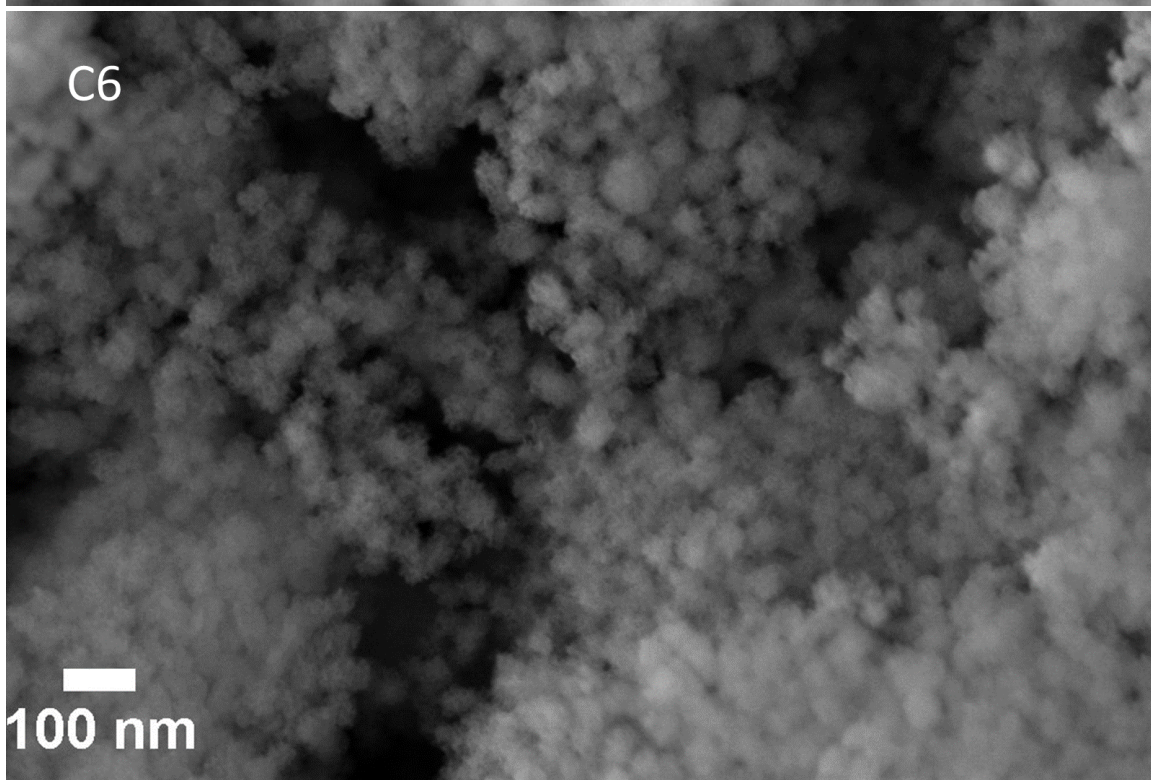
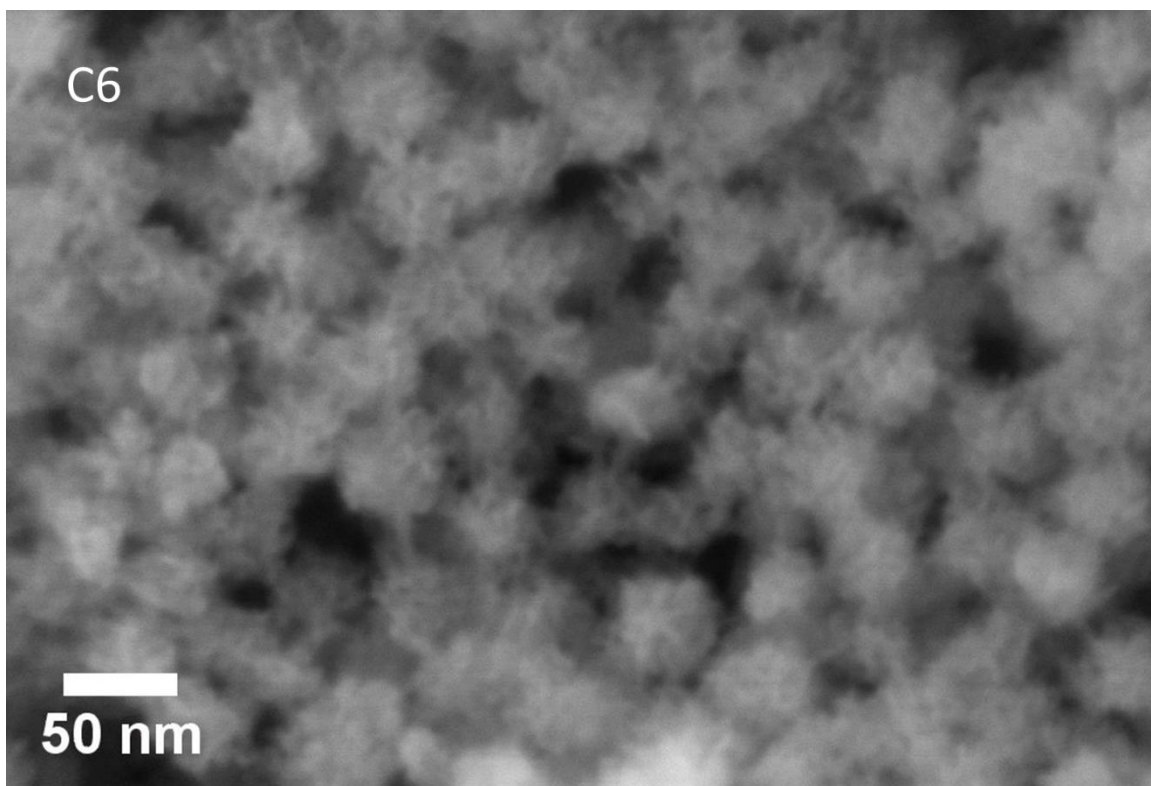
Fig. S4. Excess solvent addition test to know the dispersion phase of the emulsion.

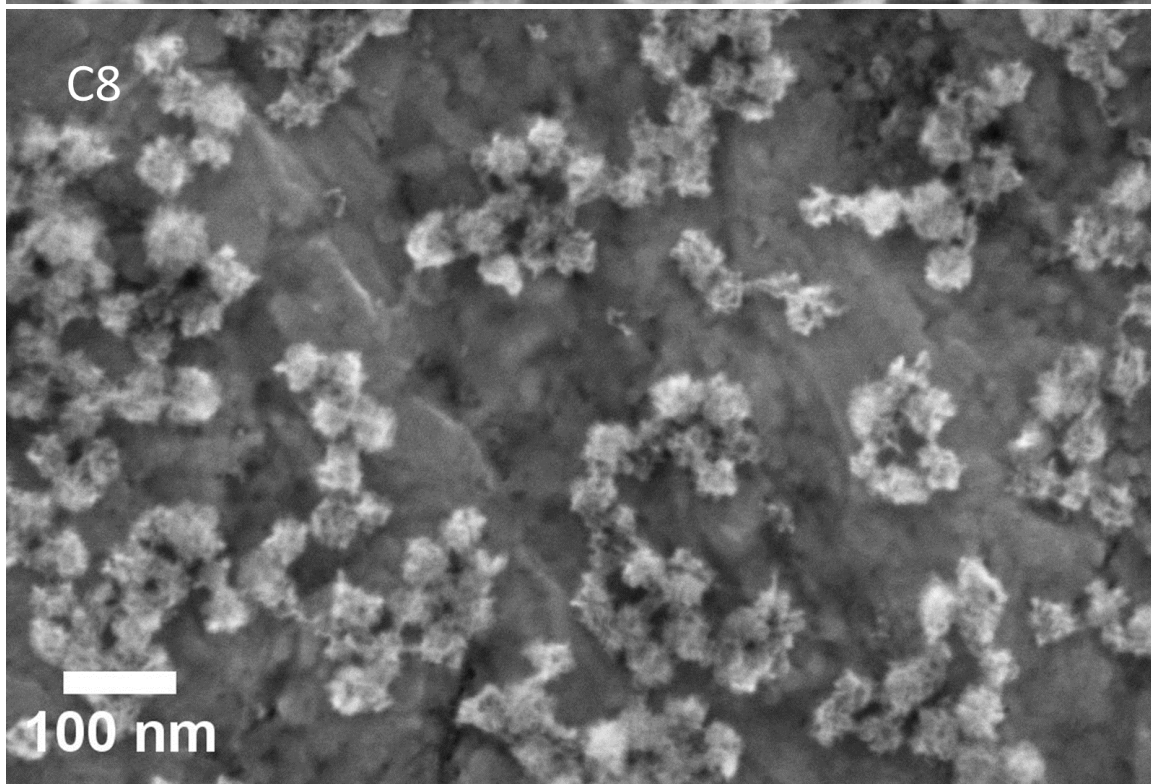
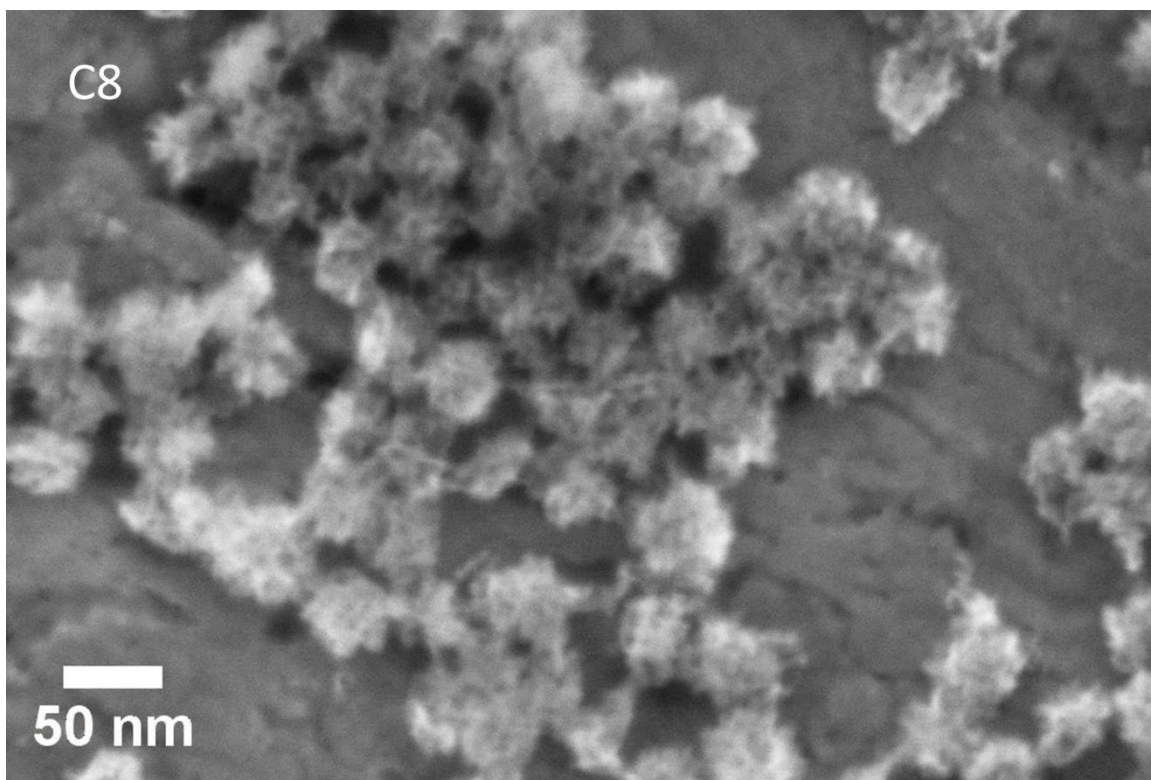
Fig. S5. Additional SEM images of DFNS formed using various alcohols. DFNS are non-conducting materials and when their sizes are small, their imaging is out of the SEM instrument resolution limit and hence moderate quality images were obtained. For smaller DFNS, please see TEM images given figure 2

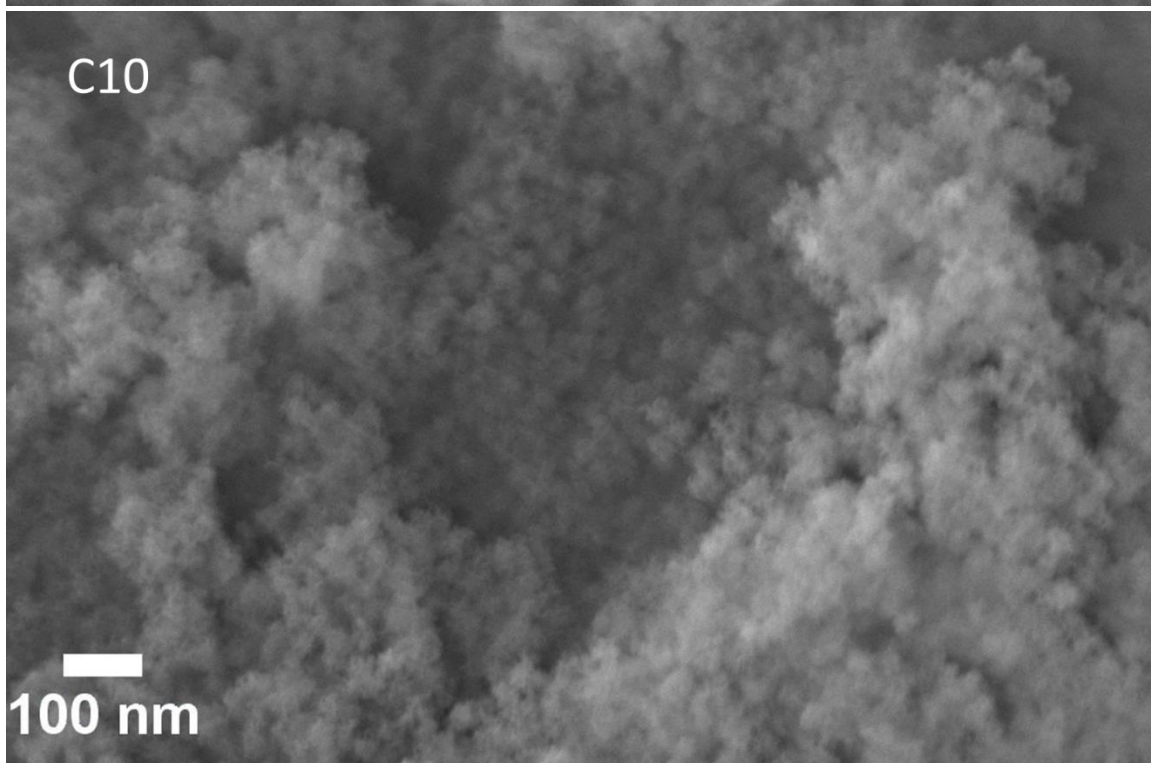
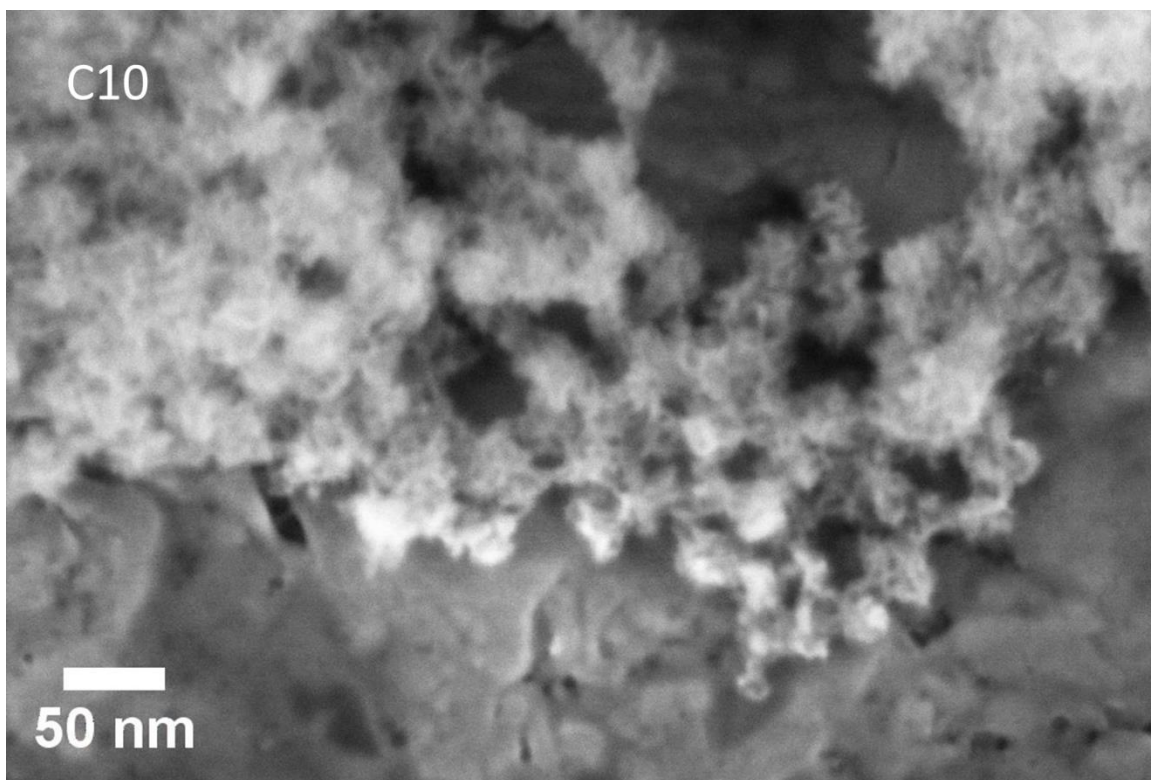


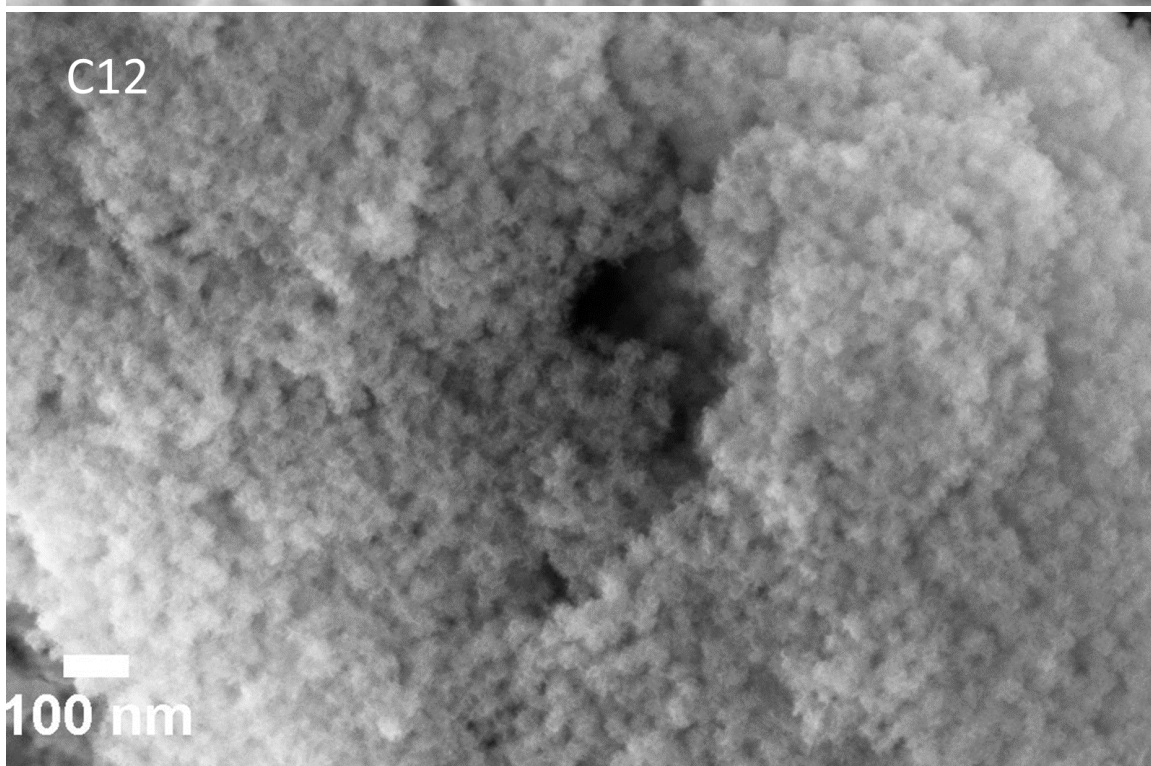
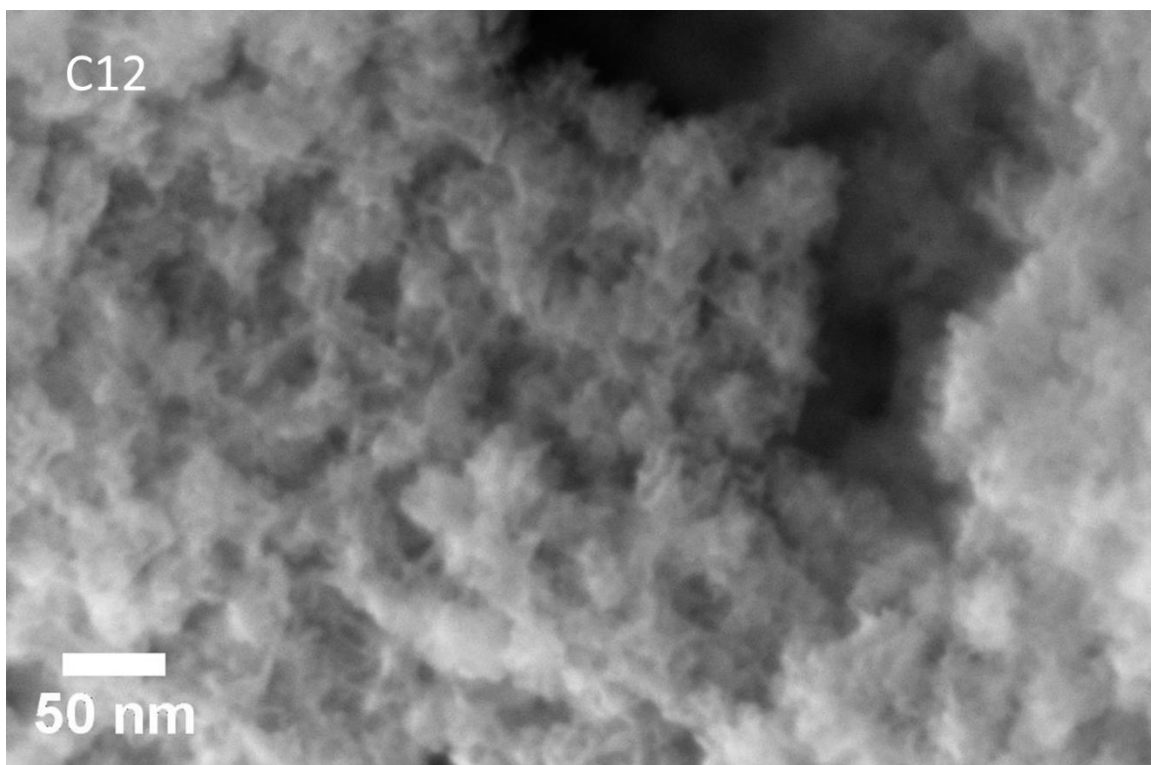


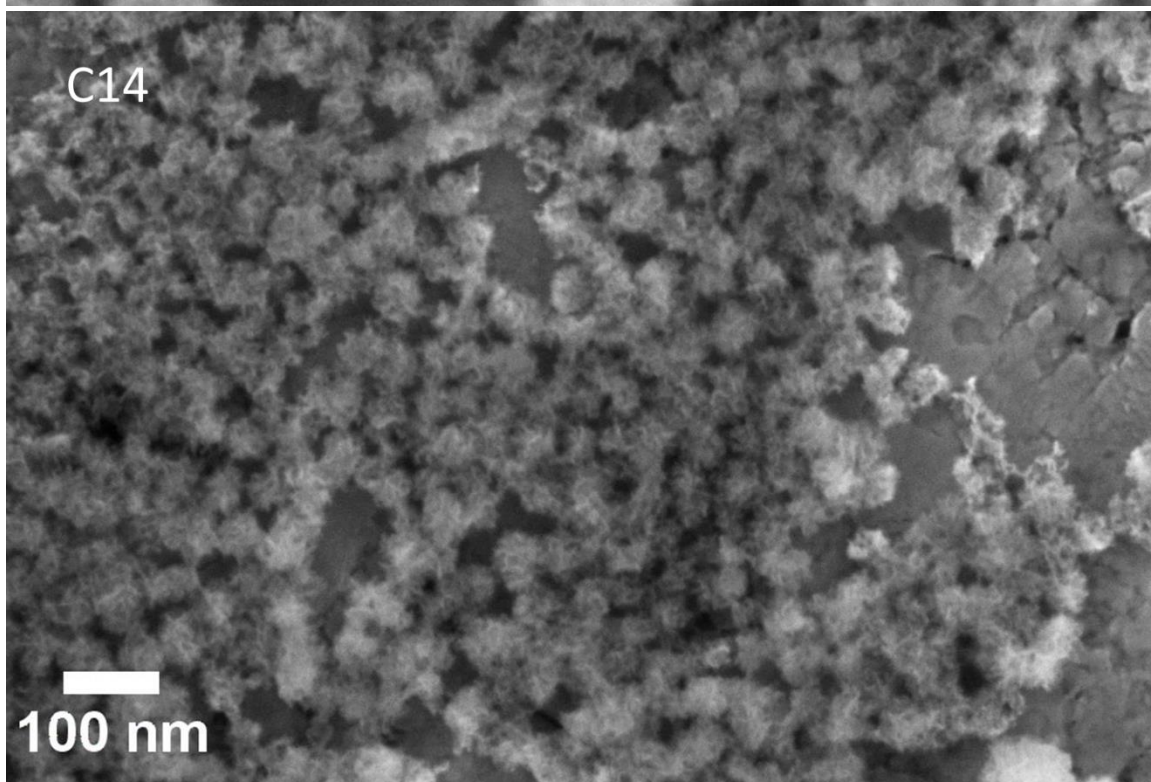
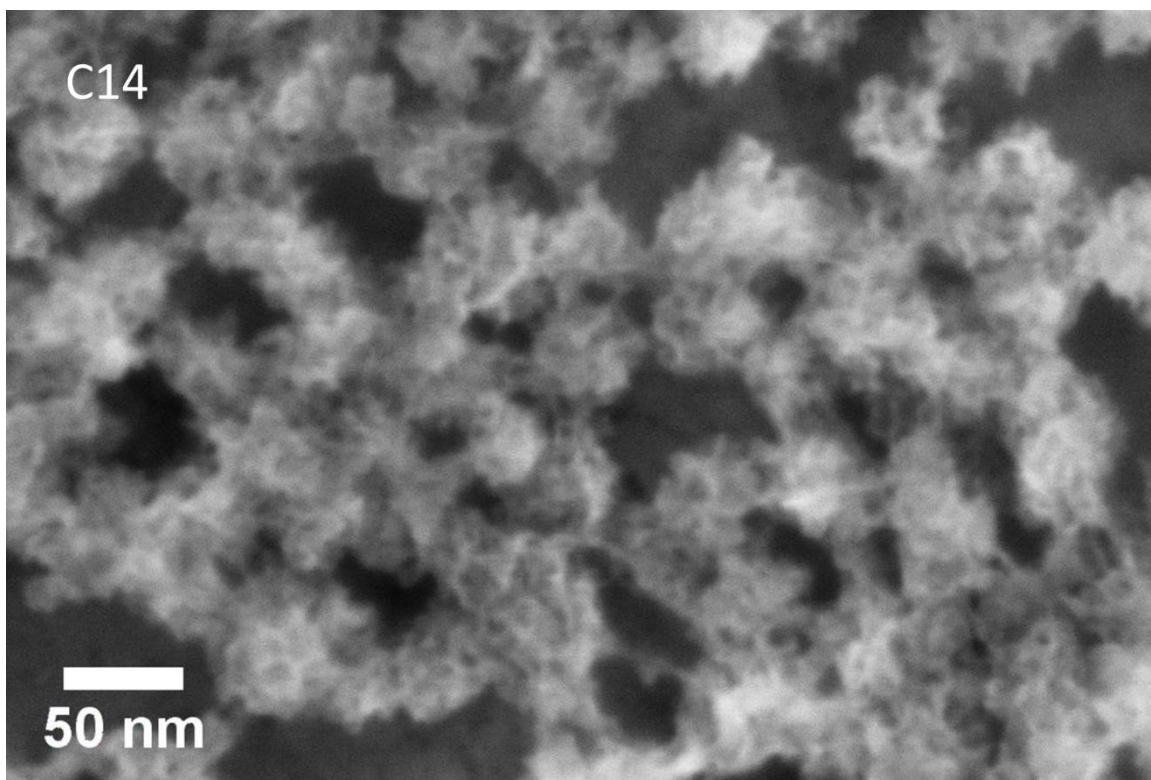


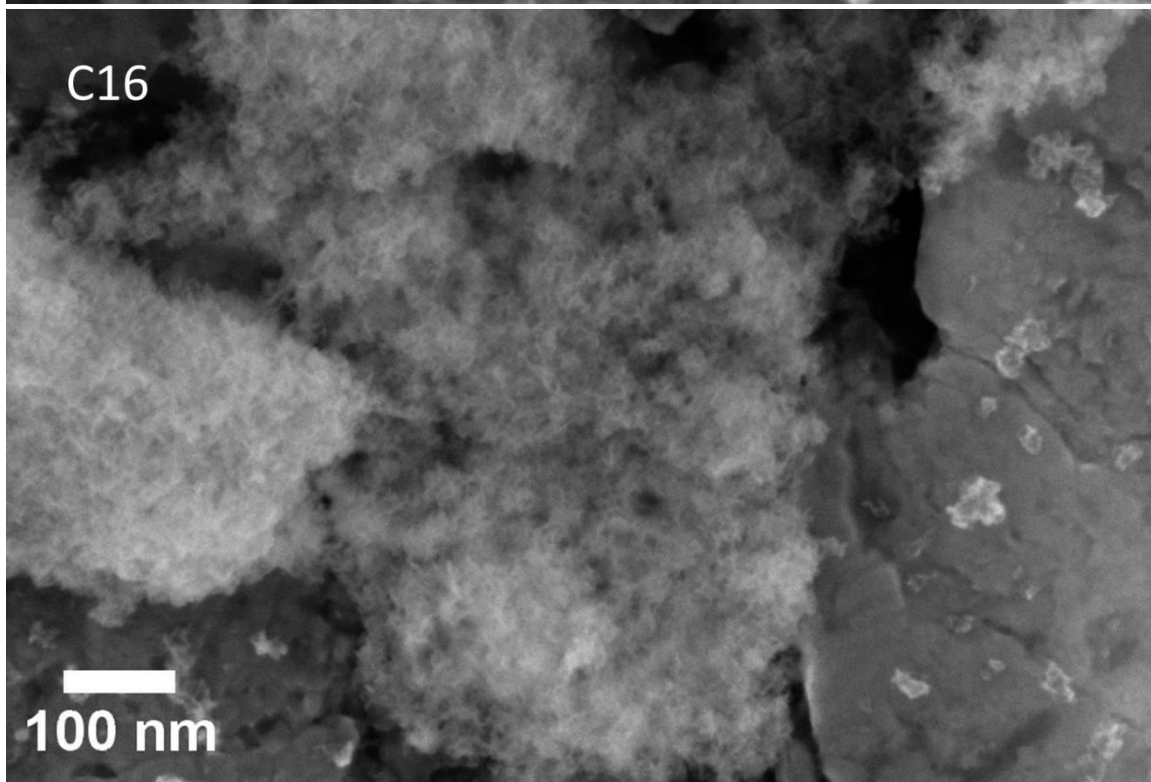
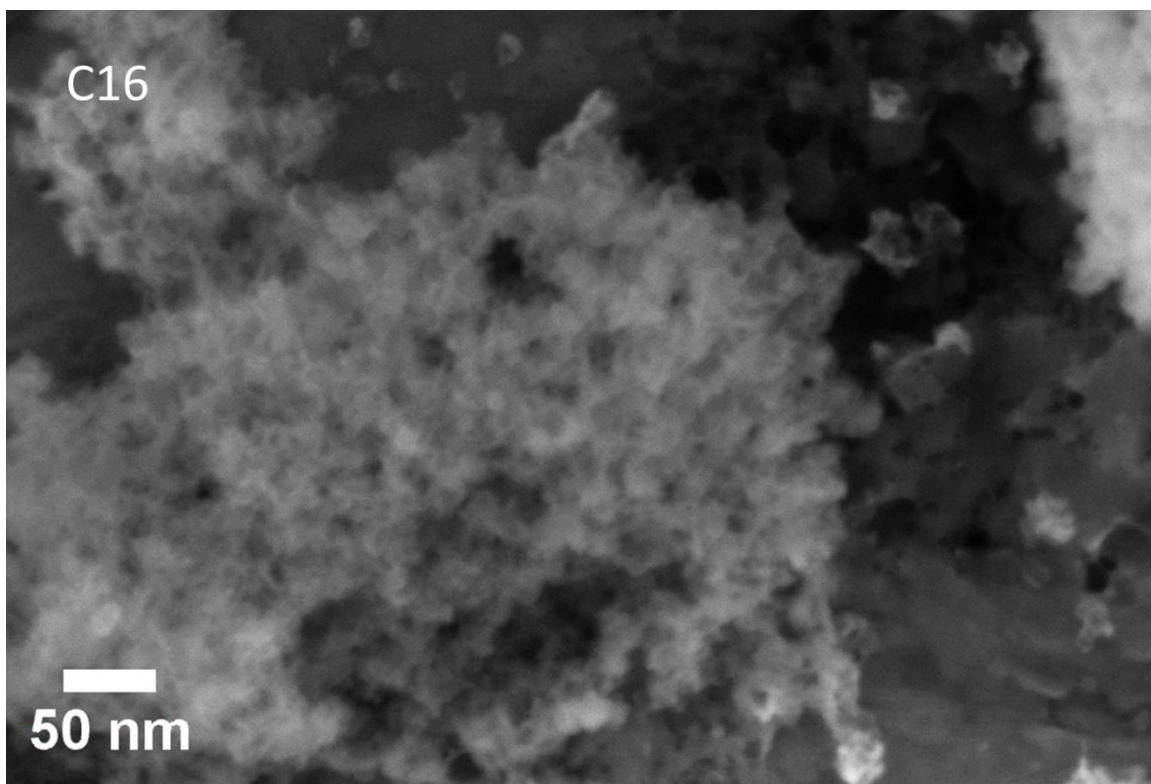












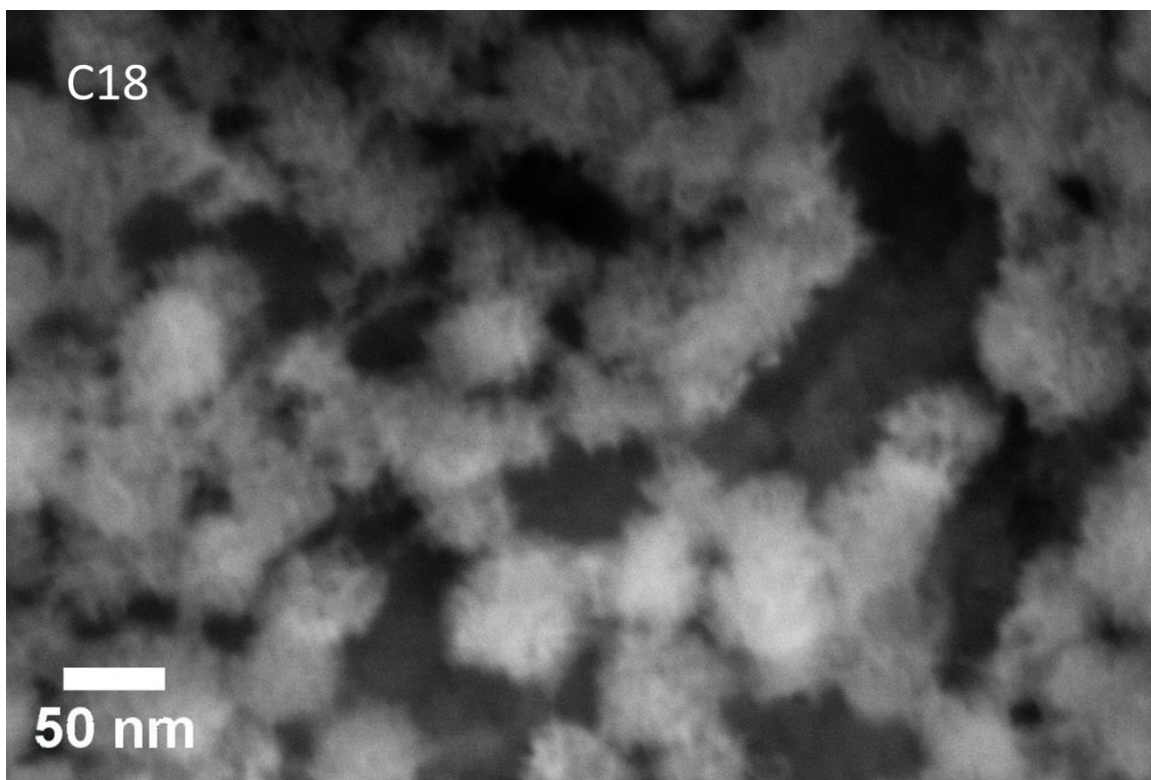
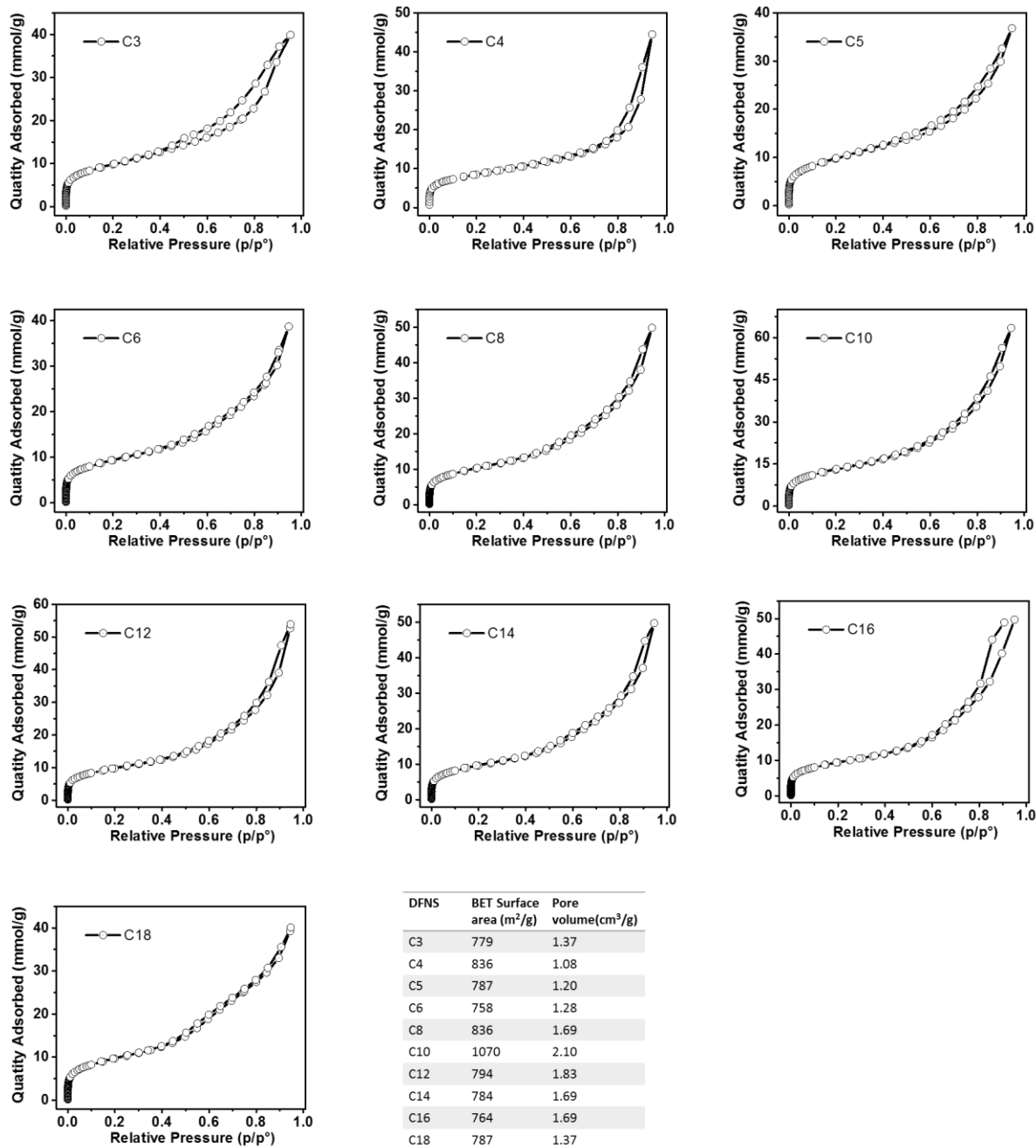


Fig. S6. N₂ Sorption Data of DFNS Synthesized using various Alcohols



Standard error in measurements: BET surface area- 4%, Pore volume - 0.01

Fig. S7. SEM Images of Aggregated DFNS

