

# Supporting Materials

## **Highly transparent and self-extinguishing nanofibrillated cellulose-monolayer clay nanoplatelethybrid films**

Siyi Ming,<sup>1</sup> Gang Chen,<sup>1</sup> Jiahao He,<sup>1</sup> Yudi Kuang,<sup>1</sup> Yu Liu,<sup>1</sup> Ruiqiang Tao,<sup>2</sup> Honglong Ning,<sup>2\*</sup> Penghui Zhu,<sup>1</sup> Yingyao Liu<sup>1</sup>, Zhiqiang Fang<sup>1,2,3\*</sup>

1. State Key Laboratory of Pulp and Paper Engineering, South China University of Technology, Guangzhou 510640 Guangdong, China

Email: [mszhqfang@scut.edu.cn](mailto:mszhqfang@scut.edu.cn)

2. Institute of Polymer Optoelectronic Materials & Devices, State Key Laboratory of Luminescent Materials & Devices, South China University of Technology, Guangzhou 510640 Guangdong China

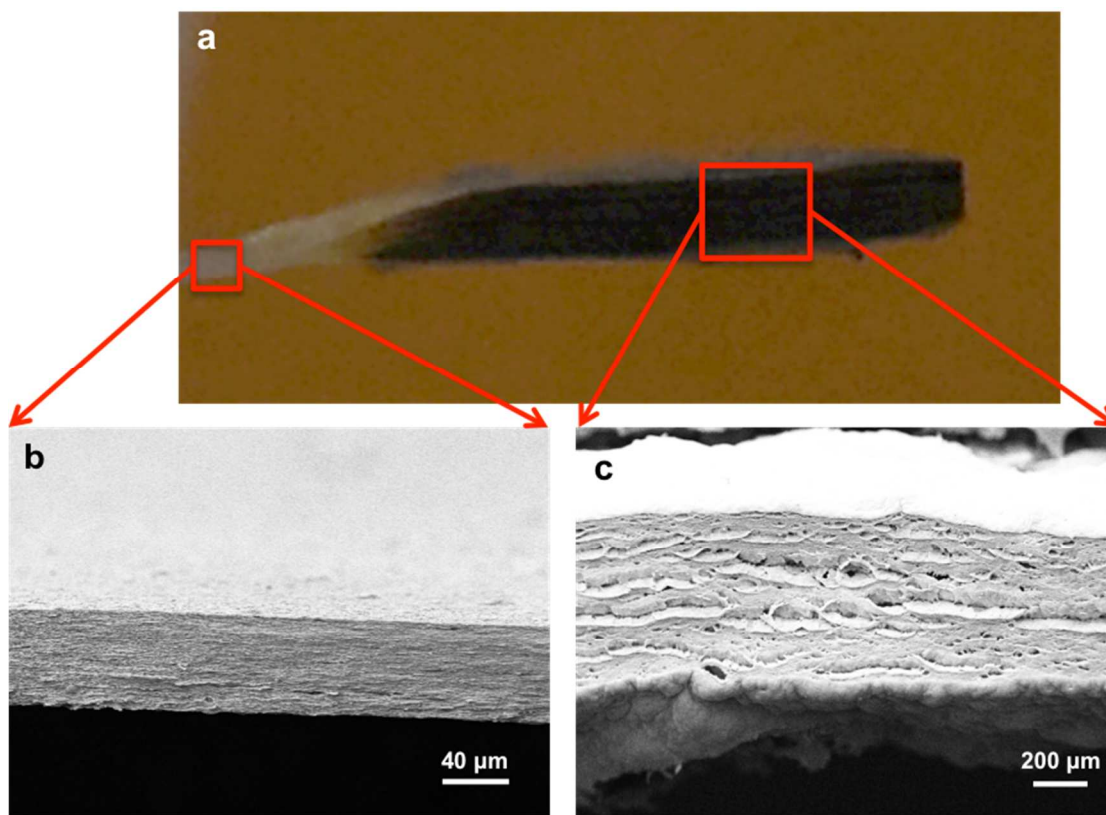
Email: [ninghl@scut.edu.cn](mailto:ninghl@scut.edu.cn),

3. Key Laboratory of Pulp and Paper Science & Technology of Ministry of Education/Shandong Province, Qilu University of Technology, Jinan 250353 Guangdong, China

\*Corresponding authors



**Figure S1** Left: clay nanoplatelet suspension left undisturbed for 1 week, obvious clay nanoplatelet sediment is observed at the bottom of the container. Right: NFC-dispersed clay nanoplatelet suspension left undisturbed for 1 month, minor clay nanoplatelet sediment is observed at the bottom of the container.



**Figure S2** (a) Digital photograph showing the intumescent behavior of transparent hybrid film with 50 wt% clay nanoplatelets after flammability testing. Cross-sectional SEM images of hybrid film with 50 wt% clay nanoplatelets before (b) and after (c) burning.