

Supporting Information

Tumor-Associated Mutations in Caspase-6 Negatively Impact Catalytic Efficiency

Kevin B. Dagbay, Maureen E. Hill, Elizabeth Barrett, and Jeanne A. Hardy*

Department of Chemistry, University of Massachusetts Amherst

Running title: Caspase-6 Tumor-Associated Mutations

*To whom correspondence should be addressed: Jeanne A. Hardy, PhD, Department of Chemistry, University of Massachusetts Amherst, 745A Lederle Graduate Research Tower, 710 North Pleasant St., Amherst, MA 01003; E-mail: hardy@chem.umass.edu,
Phone: (413) 545-3486, Fax: (413) 545-4490

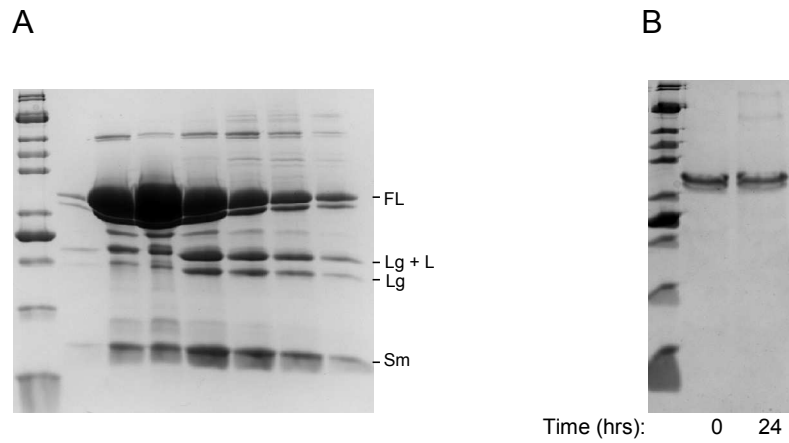


Figure S1. (A) Purification gel of caspase-6 FL W227A. Even after 18-hr expression, it is predominantly in its unprocessed, inactive form. (B) Self-cleavage assay of caspase-6 FL W227A (3 μ M) before and after 24 hour incubation at 37°C. Even after 24 hours, it cannot cleave itself any further.