

Surface Plasmon Coupling and Control using Spherical Cap Structures

*Yu Gong, Alan G. Joly, Xin Zhang, Patrick Z. El-Khoury and Wayne P. Hess**

Supplemental Info

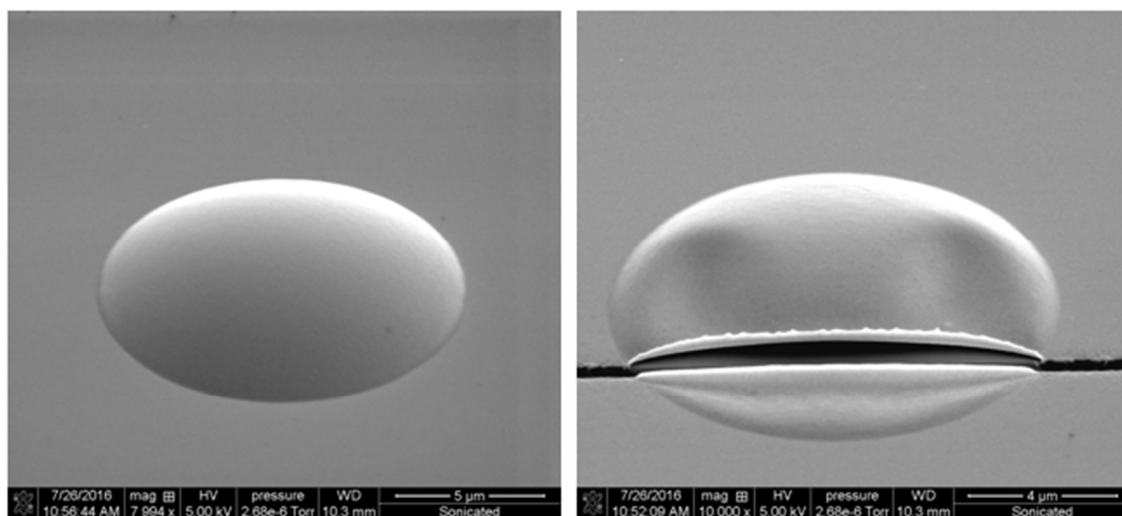


Figure S1. SEM images of a spherical cap before (left) and after FIB cut (right). The right hand image demonstrates that the cap is hollow, produced by the formation of a gas bubble upon the silicon surface. Note scale change between images.