

Supporting Information For:

A Membrane Anchored DNA Assembly For Energy And Electron Transfer

Karl Börjesson,[†] John Tumpene,[†] Thomas Ljungdahl,[†] L. Marcus Wilhelmsson,[†] Bengt Nordén,[†] Tom Brown,[‡] Jerker Mårtensson[†] and Bo Albinsson^{†}*

[†]Department of Chemical and Biological Engineering, Chalmers University of Technology, SE-41296
Gothenburg, Sweden

[‡]School of Chemistry, University of Southampton, Highfield, Southampton, SO17 1BJ, UK

Email: balb@chalmers.se

Telephone: +46-(0)31-7723044

Fax: +46-(0)31-7723858

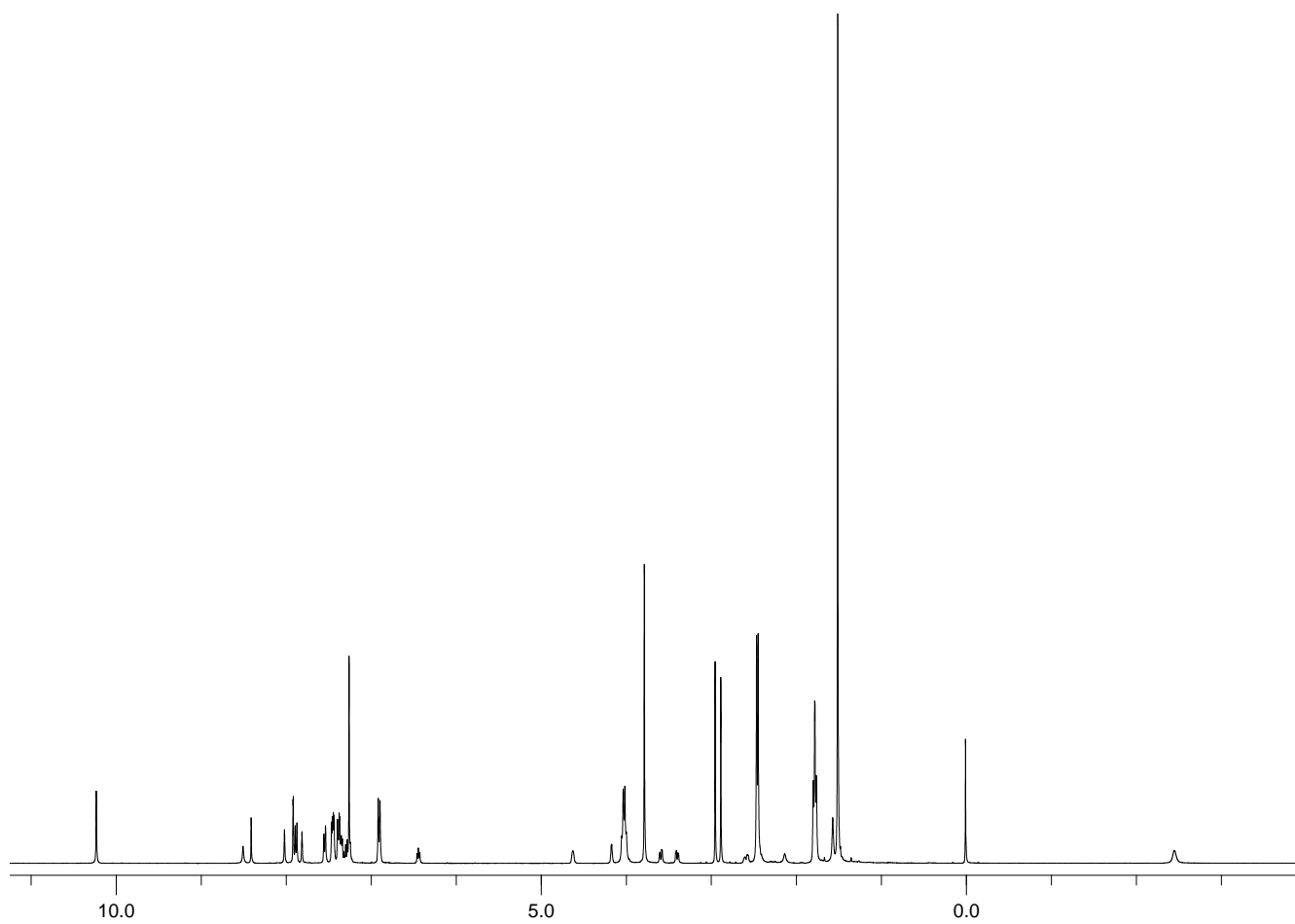


Figure S1. ^1H NMR of **2** in CDCl_3 .

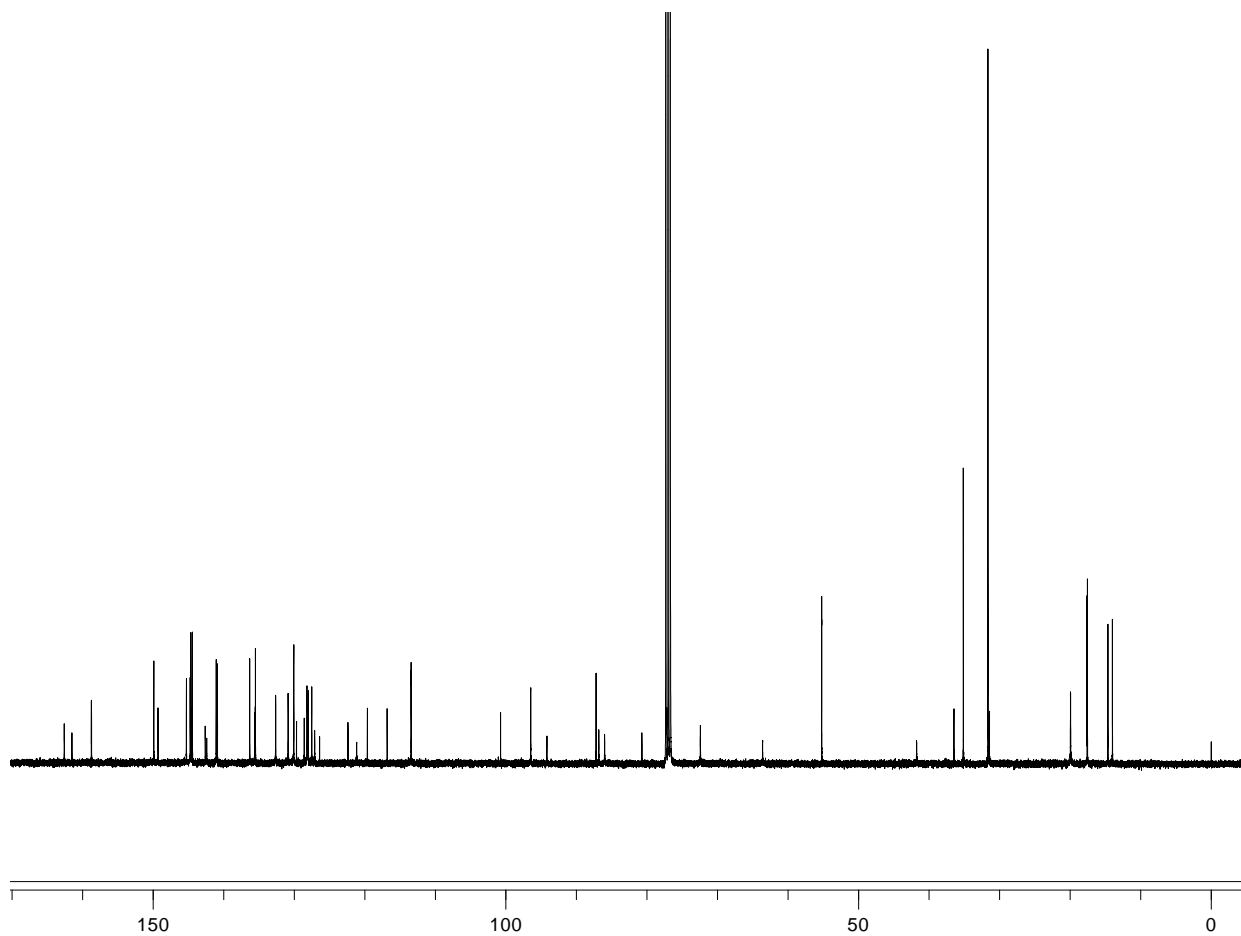


Figure S2. ^{13}C NMR of **2** in CDCl_3 .

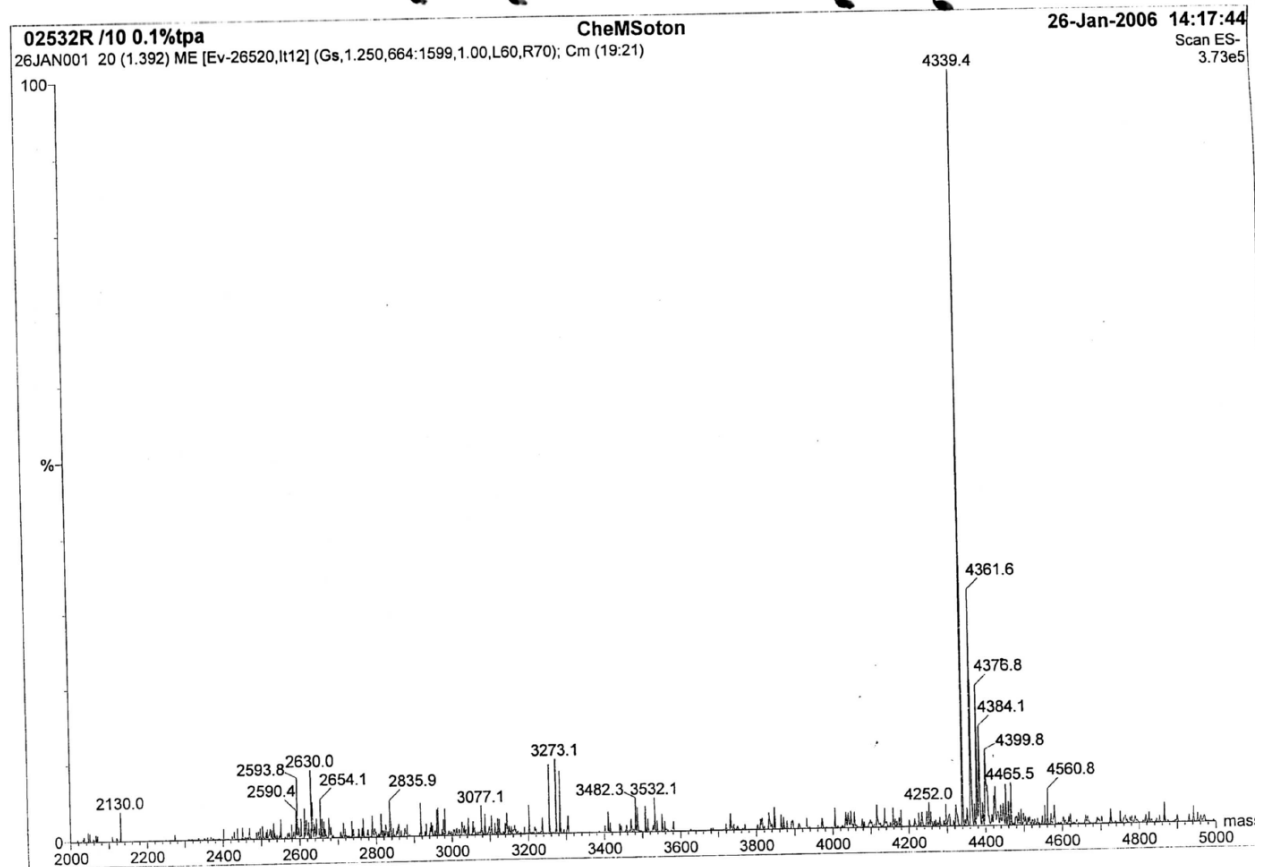


Figure S3. MALDI-TOF of test sequence with 11 normal dT and the porphyrin-dT ($C_{173}H_{216}N_{28}O_{82}P_{11}$).

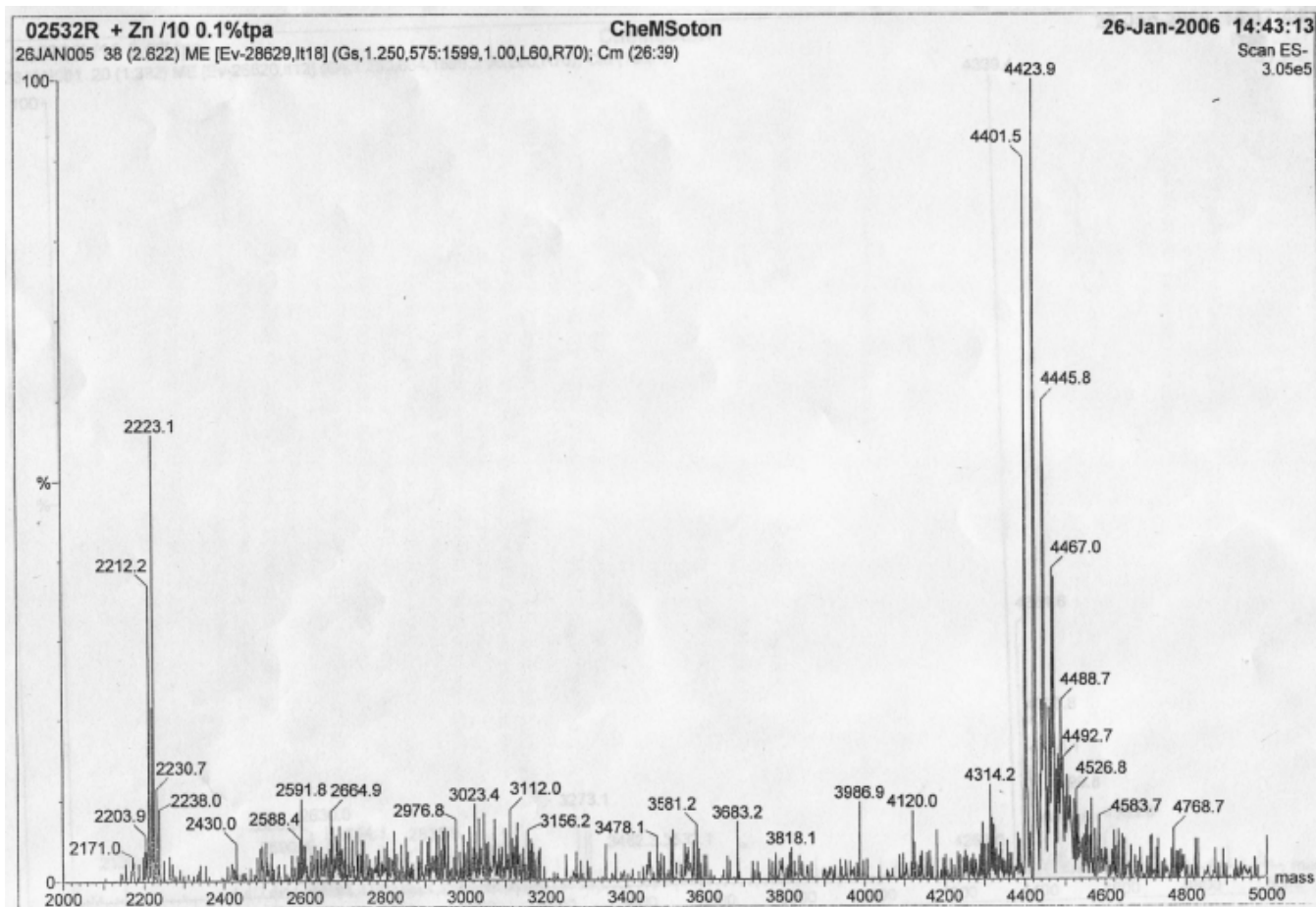


Figure S4. MALDI-TOF of test sequence with 11 normal dT and the zinc-porphyrin-dT ($C_{173}H_{214}N_{28}O_{82}P_{11}Zn$).