

Designing Block Copolymer Architectures toward Tough Bioplastics from Natural Rosin

Md Anisur Rahman, Hasala N. Lokupitiya, Mitra S. Ganewatta, Liang Yuan, Morgan Stefik and Chuanbing Tang*

Department of Chemistry and Biochemistry, University of South Carolina, Columbia, South Carolina 29208, USA

CORRESPONDING AUTHORS: tang4@mailbox.sc.edu

Supporting Information

Scheme S1. Synthesis of homopolymer by ROMP.

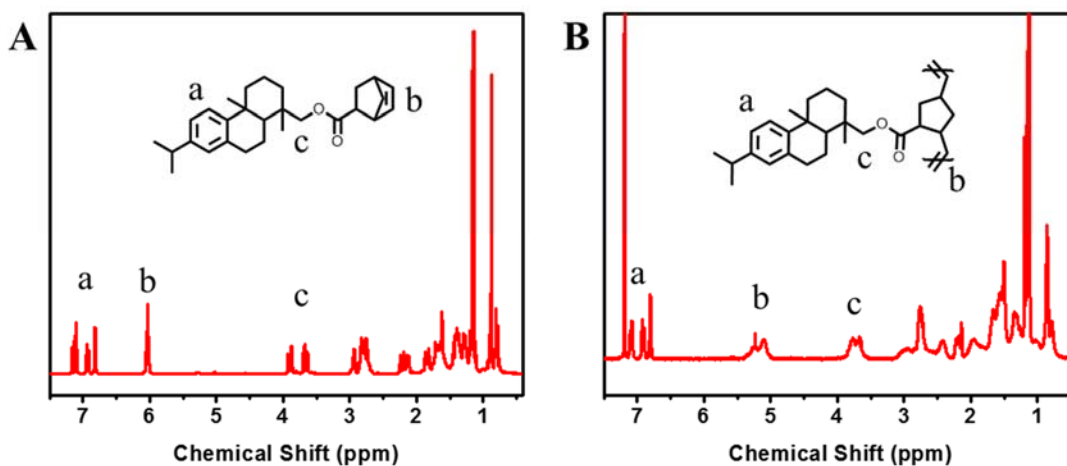
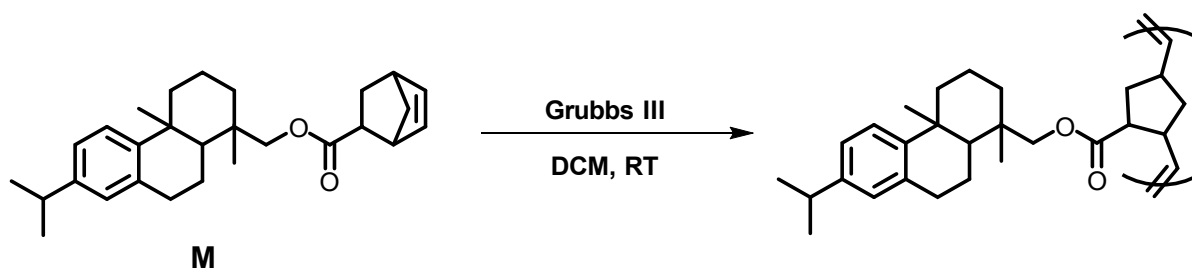


Figure S1. ^1H NMR spectra of (A) Monomer (**M**); (B) Homopolymer.

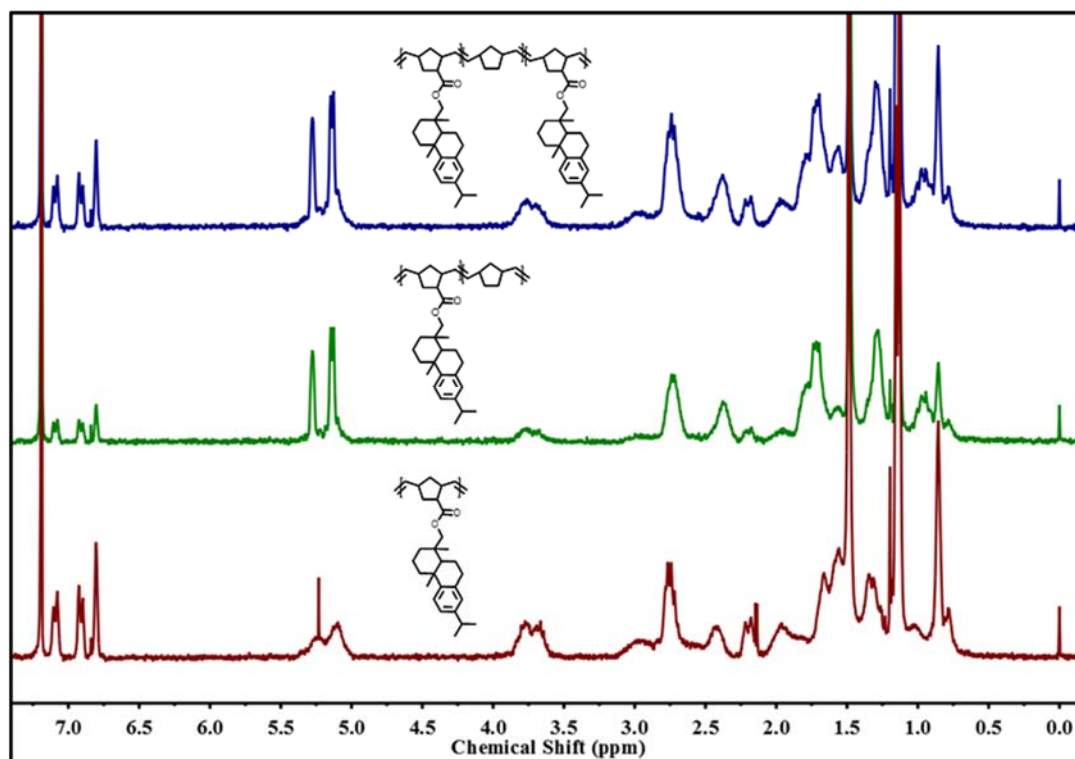


Figure S2. ^1H NMR spectra of polymers from each step in synthesis of triblock copolymers.

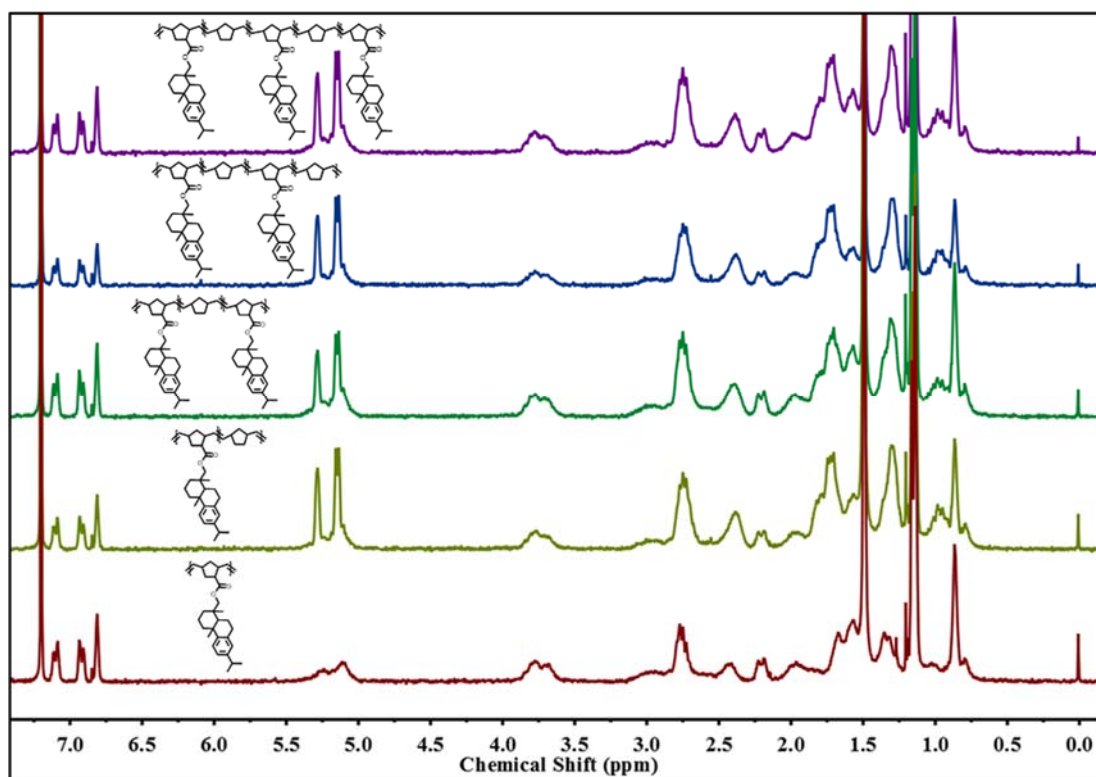


Figure S3. ^1H NMR spectra of polymers from each step in synthesis of pentablock copolymers.

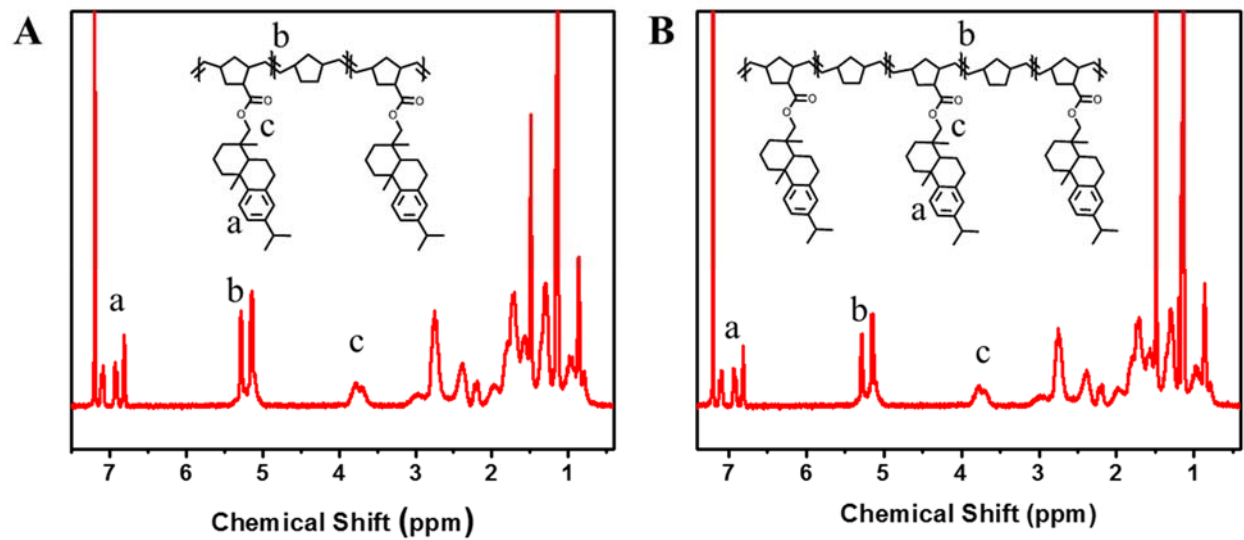


Figure S4. ^1H NMR spectra of (A) Triblock copolymer; (B) Pentablock copolymers.

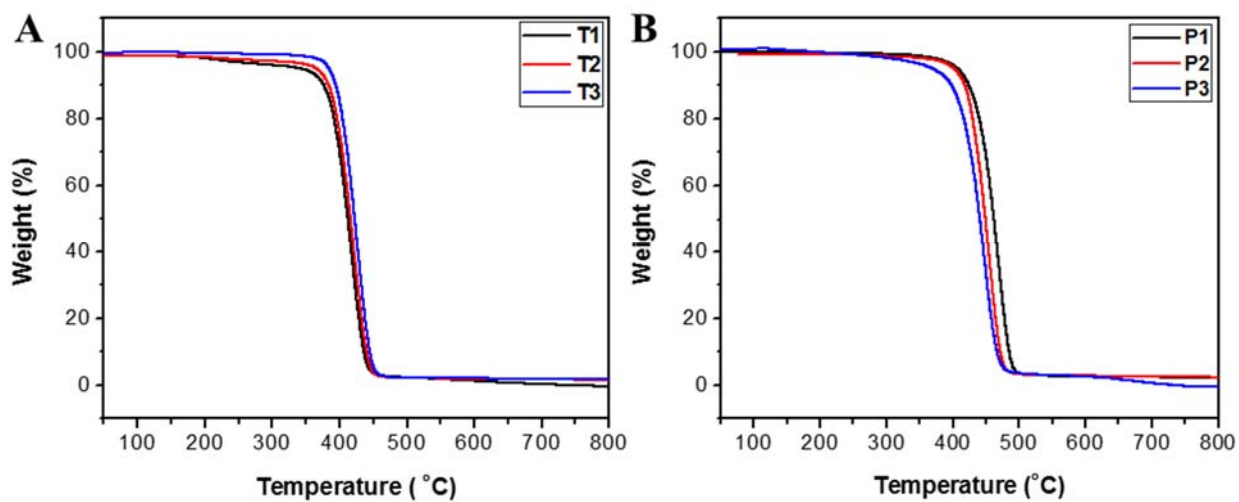


Figure S5. TGA curves of (A) Triblock copolymers T1, T2, and T3; and (B) Pentablock copolymers P1, P2, and P3.

Table S1. SAXS results of all tri and pentablock copolymers.

Polymer	f_{Rosin} (Theo)	q^* (nm ⁻¹)	D ($2\pi/q^*$) (nm)	q_1 (nm ⁻¹)	q / q^*
T1	0.78	0.15	42	0.30	1, 2
T2	0.68	0.14	45	0.28	1, 2
T3	0.63	0.13	48	0.26	1, 2
P1	0.78	0.11	57	0.22	1, 2
P2	0.68	0.11	57	0.22	1, 2
P3	0.63	0.09	70	0.17	1, 2

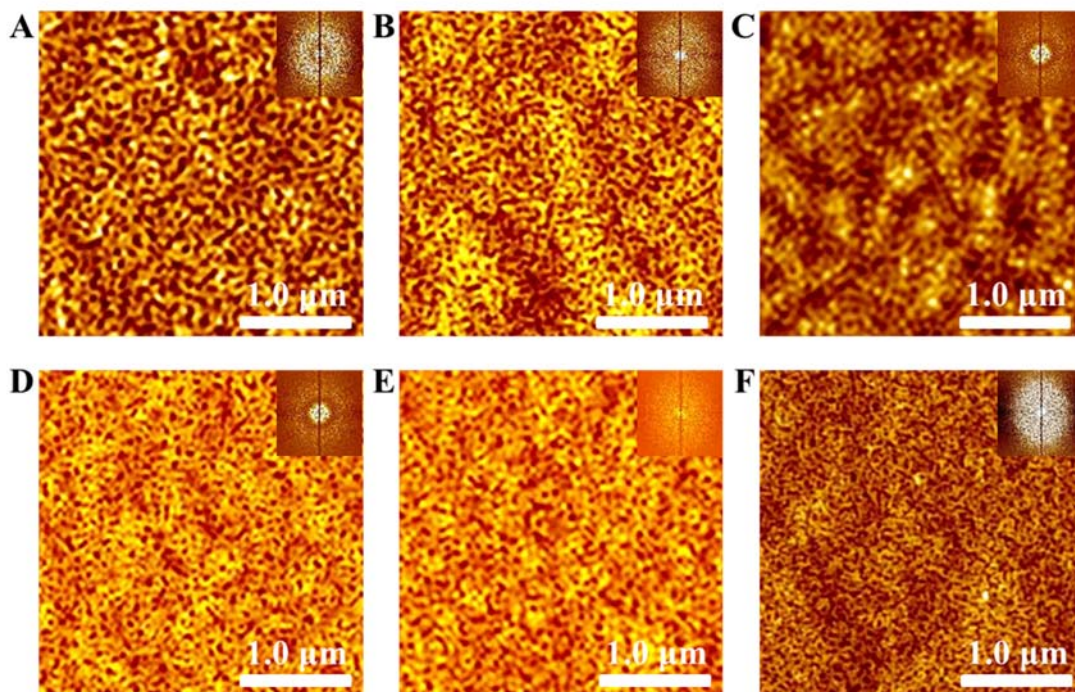


Figure S6. AFM height images of thin films of (A) **P1**; (B) **P2**; (C) **P3**; (D) **T1**; (E) **T2**; (F) **T3** prepared immediately after spin coating. FFTs of each image are shown in the insets.

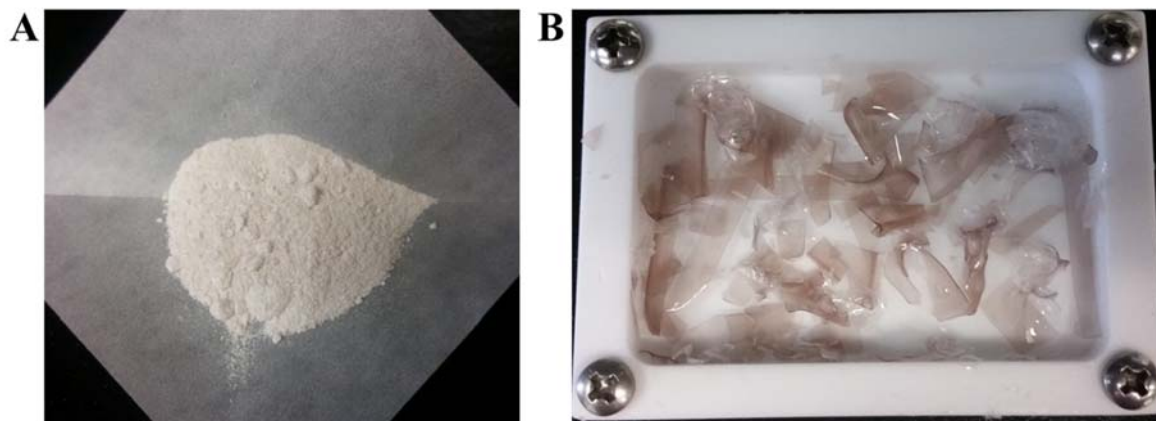


Figure S7. Images of H1 polymer: (A) powder and (B) brittle films.

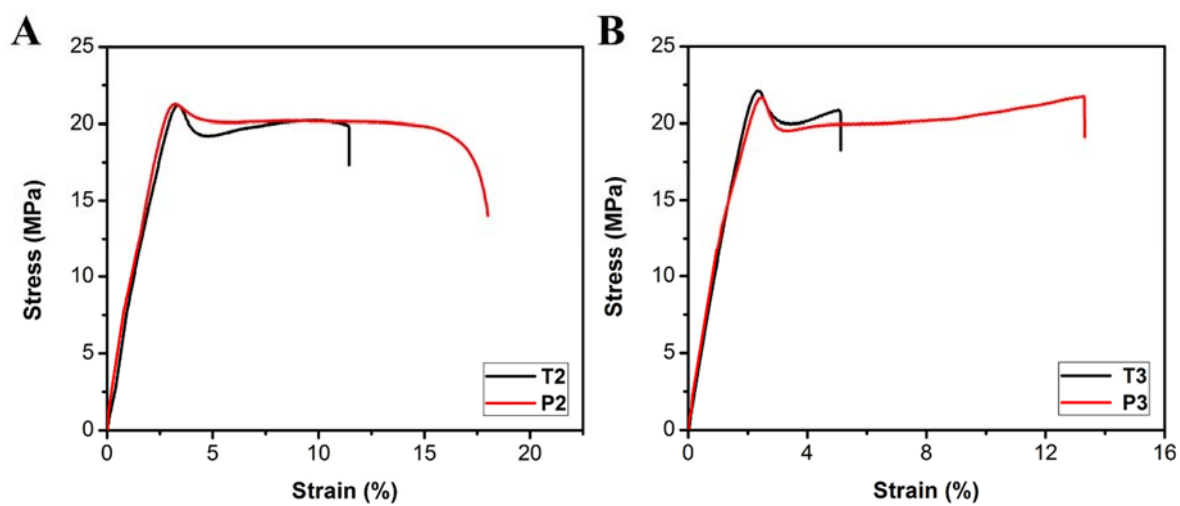


Figure S8. Uniaxial stress-strain curves for the (A) T2 and P2; (B) T3 and P3.