

Crystallization from the Amorphous State of a Pharmaceutical Compound: Impact of Chirality and Chemical Purity

Quentin Viel,^{#,†} Clément Brandel,[#] Yohann Cartigny,[#] M. Ermelinda S. Eusébio,[‡] João Canotilho,[‡] Valérie Dupray,[#] Eric Dargent,[†] Gérard Coquerel,[#] Samuel Petit,^{*,#}

[#] Normandie Université, Laboratoire SMS, EA 3233, Université de Rouen, F-76821 Mont Saint-Aignan Cedex, France

[‡] CQC, Department of Chemistry, University of Coimbra, Rua Larga, 3004-535 Coimbra, Portugal

[†] Normandie Université, Laboratoire AMME-LECAP, EA 4528, Université de Rouen, F-76801 Saint Etienne du Rouvray Cedex, France

* E-mail: samuel.petit@univ-rouen.fr. Phone: +33 2 35 52 24 28/+33 6 63 60 72 16.

CONTENTS

Figure S1. HPLC chromatograms of commercial (left) and recrystallized (right) racemic Diprophylline showing the impact of chemical purification on the Theophylline (TPH) content..

Figure S2. HPLC chromatograms of enantiopure Diprophylline produced by chemical synthesis (left, crude sample) and after recrystallization (right), showing the impact of chemical purification on the Theophylline (TPH) content.

Figure S3. TG-DSC analysis of racemic (form RI) and enantiopure (form EI) Diprophylline from 150 °C to 290 °C at a heating rate of 2 K/min.

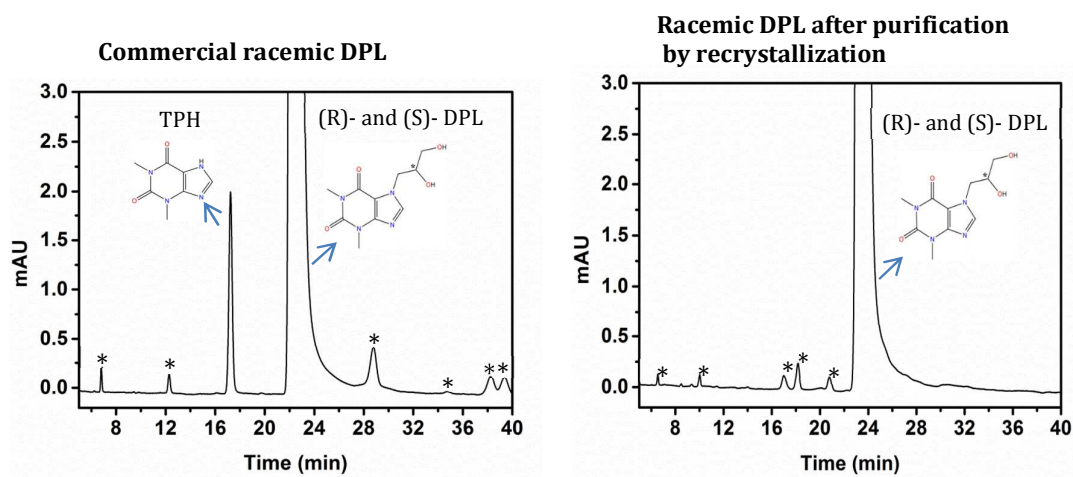


Figure S1. HPLC chromatograms of commercial (left) and recrystallized (right) racemic Diprophylline showing the impact of chemical purification on the Theophylline (TPH) content.

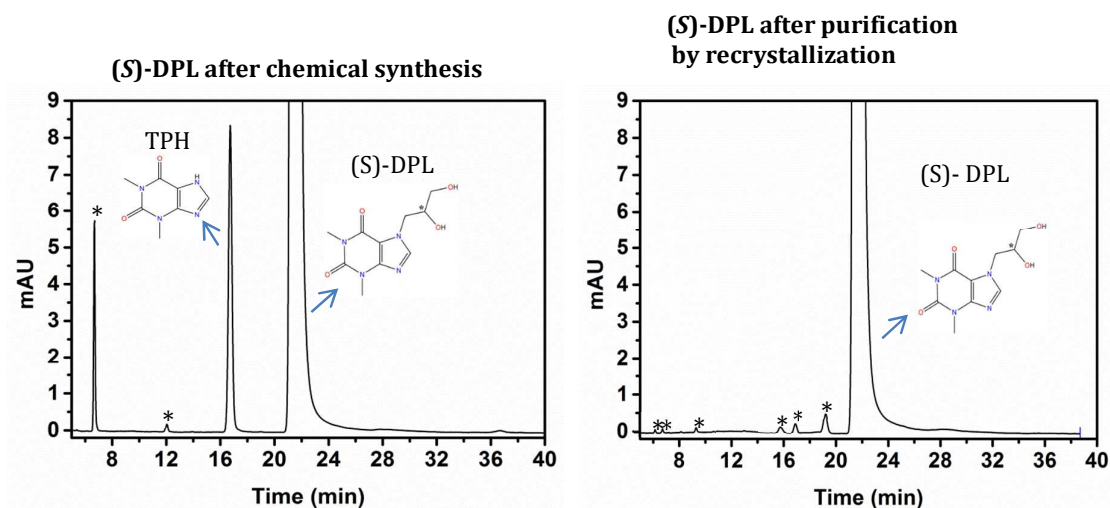


Figure S2. HPLC chromatograms of enantiopure Diprophylline produced by chemical synthesis (left, crude sample) and after recrystallization (right), showing the impact of chemical purification on the Theophylline (TPH) content.

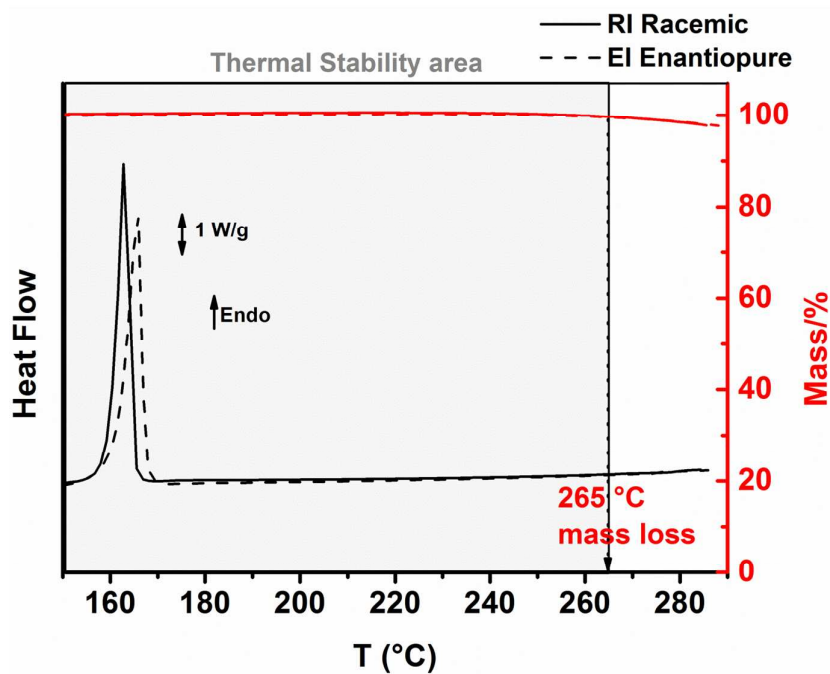


Figure S3. TG-DSC analysis of racemic (form RI) and enantiopure (form EI) Diprophylline from 150 °C to 290 °C at a heating rate of 2 K/min.