

## Supporting Information

### Cytochrome P450 Mediated Bioactivation of Saracatinib

Jiaming Chen<sup>†</sup>, Ying Peng<sup>†\*</sup>, and Jiang Zheng<sup>†¶\*</sup>

<sup>†</sup>School of Pharmacy, <sup>‡</sup>Key Laboratory of Structure-Based Drug Design & Discovery of Ministry of Education, Shenyang Pharmaceutical University, Shenyang, Liaoning, 110016, P. R. China

<sup>¶</sup>Key Laboratory of Pharmaceutics of Guizhou Province, Guizhou Medical University, Guiyang, Guizhou, 550004, P. R. China

#### Corresponding authors and address where work was done

Jiang Zheng

Key Laboratory of Structure-Based Drug Design and Discovery of Ministry of Education, Shenyang Pharmaceutical University, Shenyang, P. R. China;

Key Laboratory of Pharmaceutics of Guizhou Province, Guizhou Medical University, Guiyang, Guizhou, 550004, P. R. China

E-mail: [zhengneu@yahoo.com](mailto:zhengneu@yahoo.com)

Tel: +86-24-23986361

Fax: +86-24-23986510

Ying Peng

School of Pharmacy, Shenyang Pharmaceutical University, Shenyang, Liaoning, 110016, P. R. China

E-mail: [yingpeng1999@163.com](mailto:yingpeng1999@163.com)

Tel: +86-24-23986361

Fax: +86-24-23986510

## Content

<b>Figure S1.</b> Extracted ion ( $m/z$ 835→706, M5) chromatogram obtained from LC-MS/MS analysis of human liver microsome incubations containing saracatinib (0.8 $\mu$ M) and GSH (10 mM) in the presence of NADPH (1.0 mM). .....	S-2
--	-----

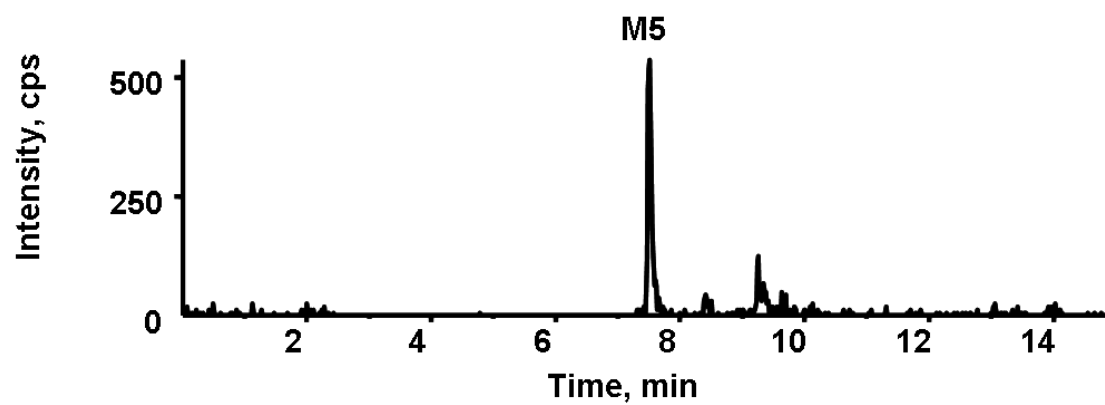


Figure S1. Extracted ion ( $m/z$  835 $\rightarrow$ 706, M5) chromatogram obtained from LC-MS/MS analysis of human liver microsome incubations containing saracatinib (0.8  $\mu$ M) and GSH (10 mM) in the presence of NADPH (1.0 mM).