

# Supporting Information

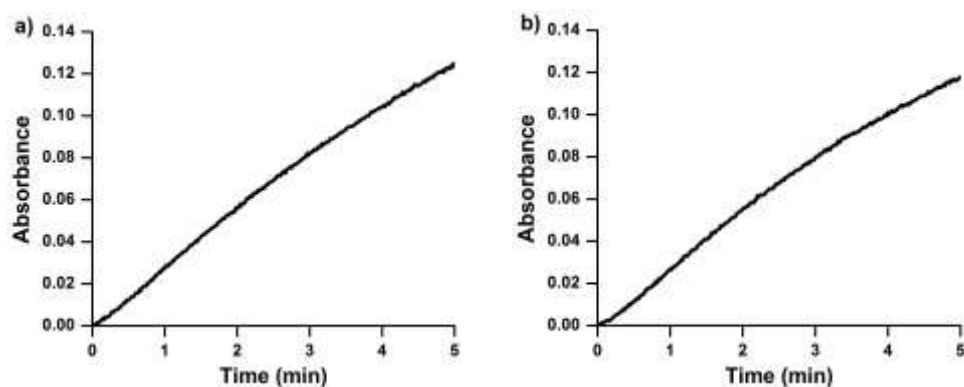
## Conjugated Polymers/DNA Hybrid Materials for Protein Inactivation

*Likun Zhao,<sup>†</sup> Jiangyan Zhang,<sup>\*†</sup> Huiming Xu,<sup>†</sup> Hao Geng,<sup>†</sup> Yongqiang Cheng,<sup>\*†</sup>*

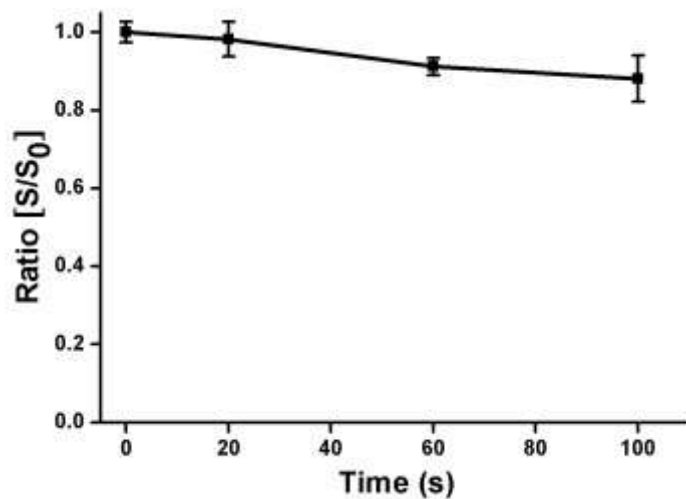
<sup>†</sup> Key Laboratory of Medicinal Chemistry and Molecular Diagnosis, Ministry of Education, Key Laboratory of Analytical Science and Technology of Hebei Province, College of Chemistry and Environmental Science, Hebei University, Baoding 071002, Hebei, P. R. China.

<sup>\*</sup>To whom correspondence should be addressed. Email: [hdzjy2005@163.com](mailto:hdzjy2005@163.com);

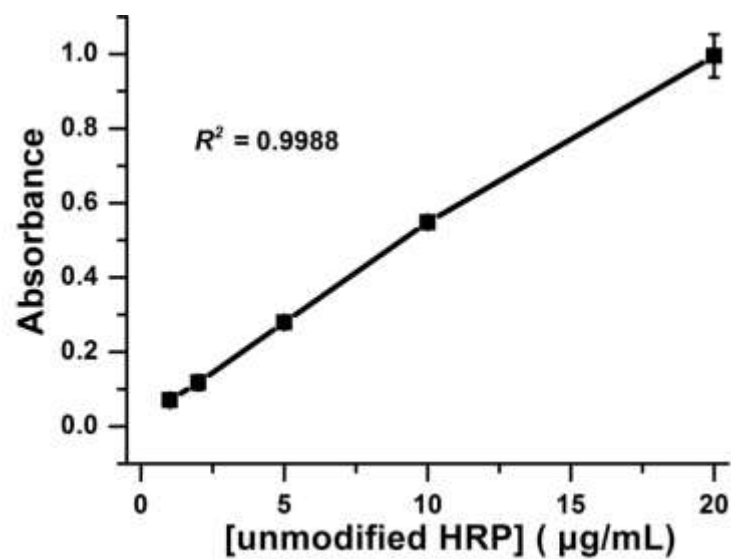
[yqcheng@hbu.edu.cn](mailto:yqcheng@hbu.edu.cn)



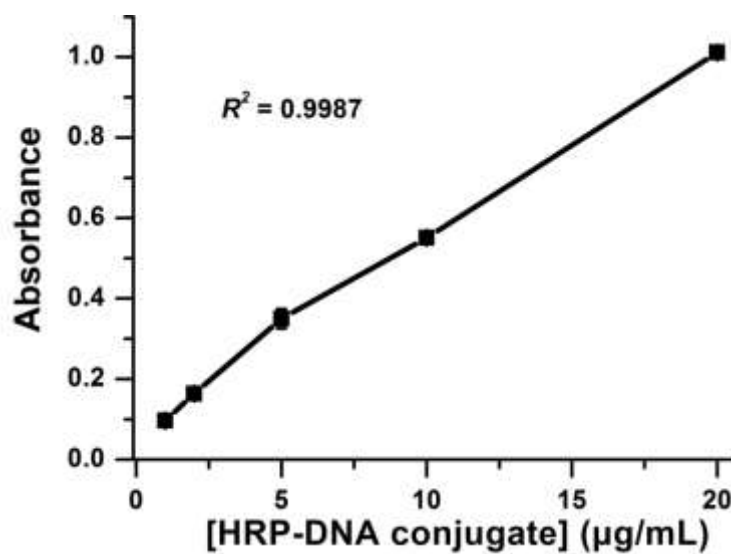
**Figure S1.** The change in absorbance as a function of time catalyzed by a) unmodified HRP or b) HRP-DNA conjugate. Unmodified HRP or HRP-DNA conjugate: 0.025  $\mu\text{g/mL}$ , ABTS: 2 mM,  $\text{H}_2\text{O}_2$ : 5 mM. The activity of the unmodified HRP was 996 Abs/min/mg and the activity of the HRP-DNA conjugate was 947 Abs/min/mg.



**Figure S2.** Photostability of PFP/HRP-DNA conjugate. [PFP] = 30  $\mu\text{M}$ , [HRP-DNA conjugate] = 20  $\mu\text{g/mL}$ . Error bars are estimated from three replicate measurements.



**Figure S3.** Calibration curve of absorbance at 414 nm against the concentration of unmodified HRP. Error bars are estimated from three replicate measurements.



**Figure S4.** Calibration curve of absorbance at 414 nm against the concentration of HRP-DNA conjugate. Error bars are estimated from three replicate measurements.