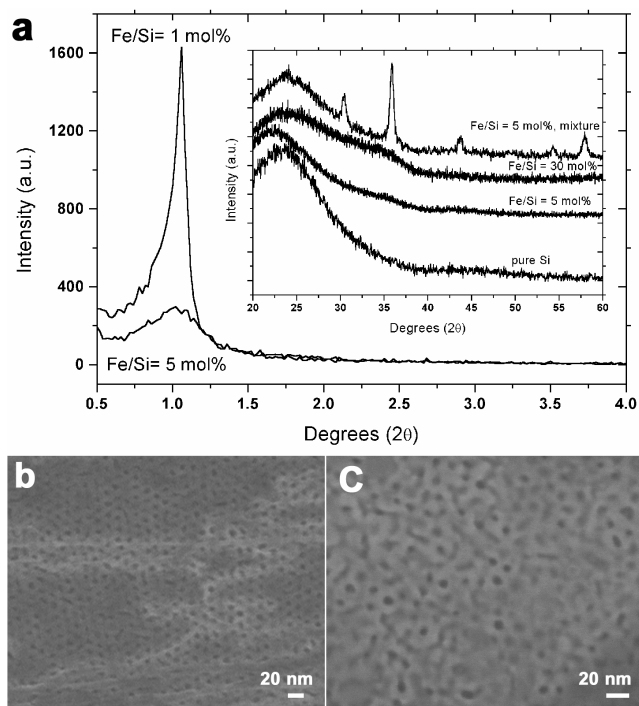
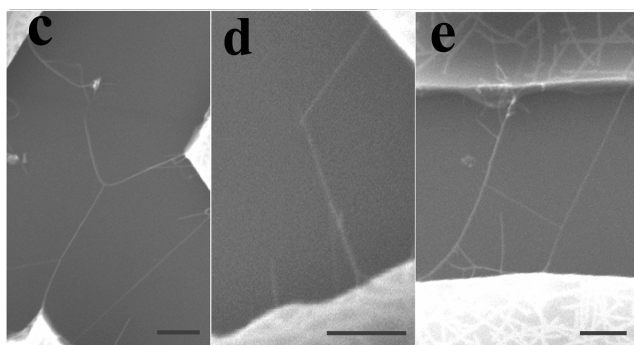


Supporting Information Available



s-Figure 1. (a) XRD patterns of Fe/SBA-16 powders (from drying of the solutions) with different molar ratios of Fe/Si. (b, c) HRSEM images of Fe/SBA-16 thin films with the Fe/Si molar ratios of 0.8 and 5, respectively.



s-Figure 2. SEM images of nanotube junctions. Scale bar: 500 nm.