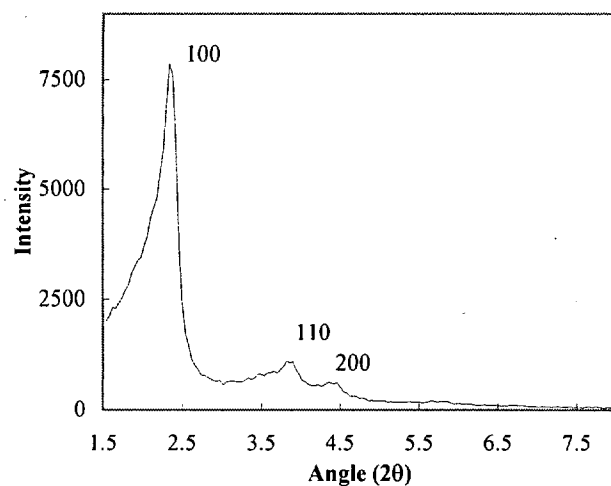
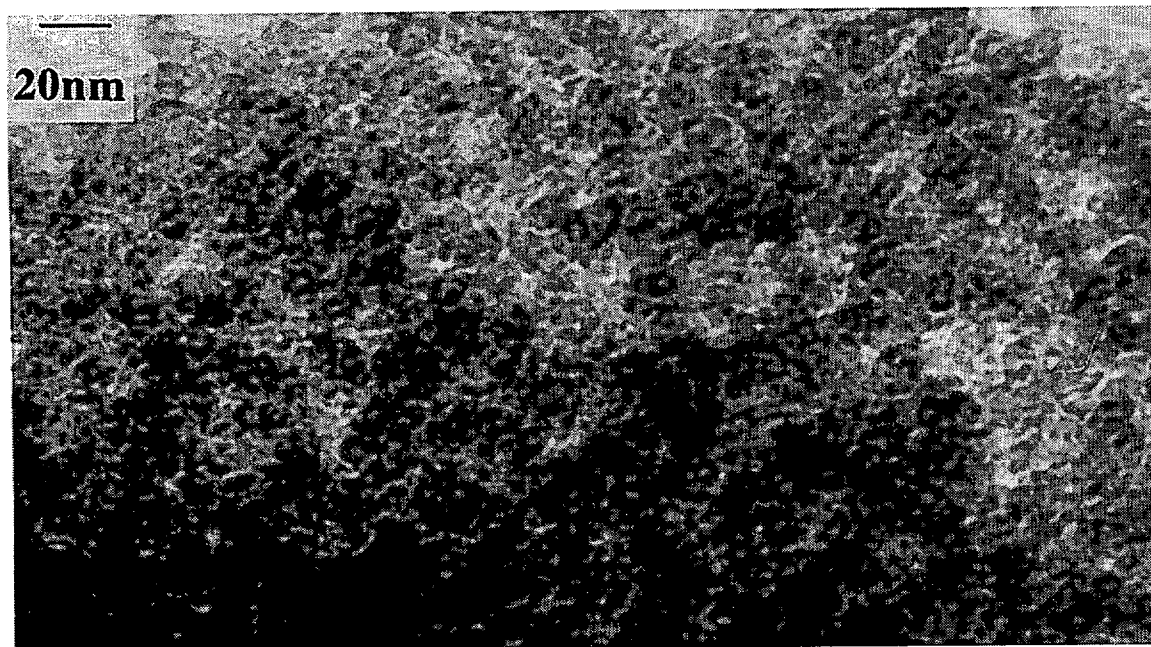


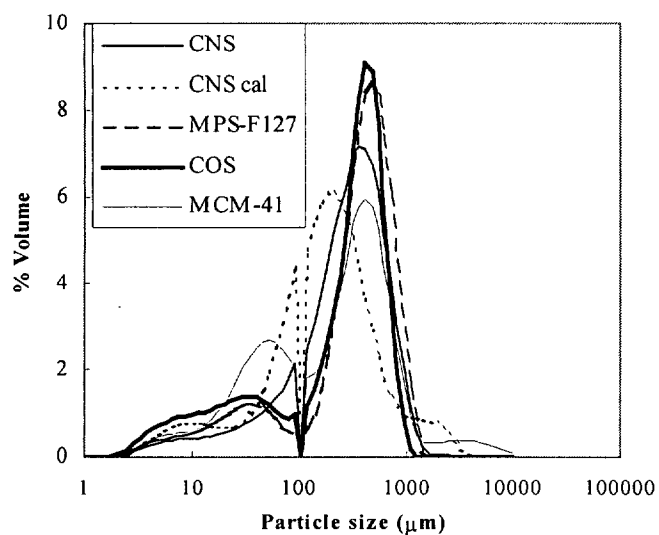
### Supporting Information Material



**Figure 8S.** X-ray powder diffraction pattern for MCM-41. Data were collected on a Philips X'PERT diffractometer using Ni filtered Cu-K $\alpha$  radiation ( $\lambda = 1.54 \text{ \AA}$ ).



**Figure 9S.** Transmission electron micrograph of a sample of CNS. Samples were dispersed on porous carbon films supported on 400  $\mu\text{m}$  copper mesh grids. Image recorded on a JEOL 2010 electron microscope operating at 200 kV.



**Figure 10S.** Particle size distribution for CNS, CNS-Cal, COS, MPS-F127 and MCM-41. Data were obtained on a Malvern 2000 particle analyser equipped with a Hydro 2000S sample dispersion unit.