

Terms & Conditions

Electronic Supporting Information files are available without a subscription to ACS Web Editions. The American Chemical Society holds a copyright ownership interest in any copyrightable Supporting Information. Files available from the ACS website may be downloaded for personal use only. Users are not otherwise permitted to reproduce, republish, redistribute, or sell any Supporting Information from the ACS website, either in whole or in part, in either machine-readable form or any other form without permission from the American Chemical Society. For permission to reproduce, republish and redistribute this material, requesters must process their own requests via the RightsLink permission system. Information about how to use the RightsLink permission system can be found at <http://pubs.acs.org/page/copyright/permissions.html>



ACS Publications

MOST TRUSTED. MOST CITED. MOST READ.

Copyright © 1998 American Chemical Society

**Chiral Molecular Recognition in a
Tripeptide-Benzylviologen Cyclophane Host**

Julia A. Gavin, Maurie E. Garcia[†], Alan J. Benesi, and Thomas E. Mallouk*

Department of Chemistry, The Pennsylvania State University, University Park, PA 16802

SUPPORTING INFORMATION

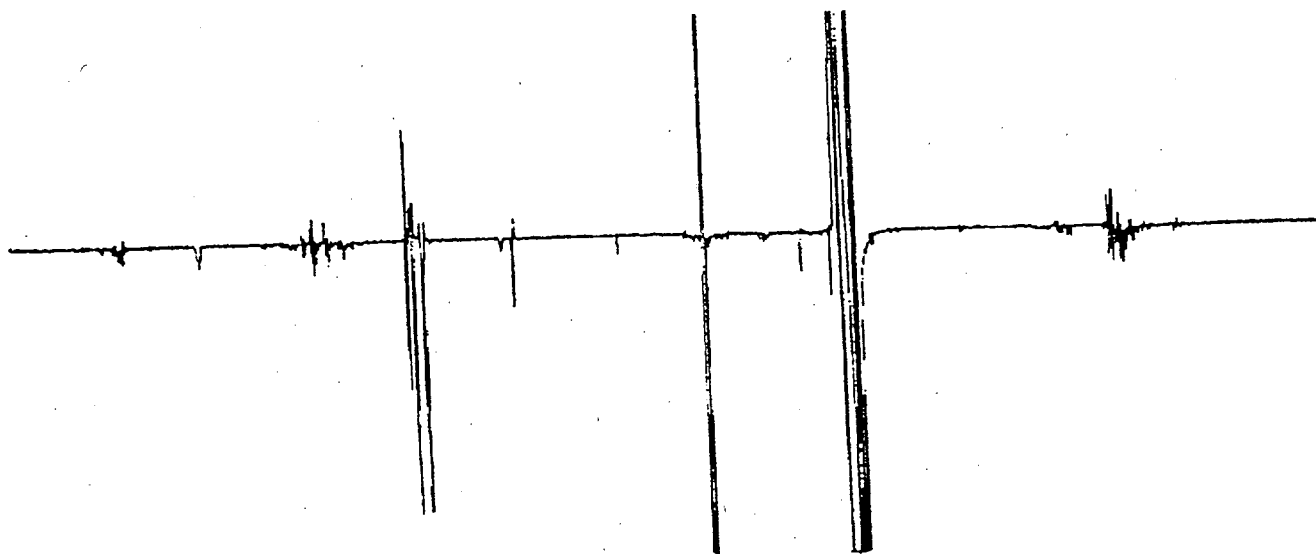
Figure Captions

Figure S1. Data from single horizontal rows of two-dimensional ¹H NOESY spectra. A. NOE's between (*R*)-DOPA CH₂ resonances at 3.0 ppm and cyclophane **1**. B. NOE's between (*R*)-DOPA phenyl resonances and **1**.

Figure S2. ¹H NOESY data. A. Weak NOE's between (*S*)-DOPA CH₂ resonances at 3.0 ppm and cyclophane **1**. B. No apparent NOE's between (*S*)-DOPA phenyl resonances and **1**.

Figure S1

A.



B.

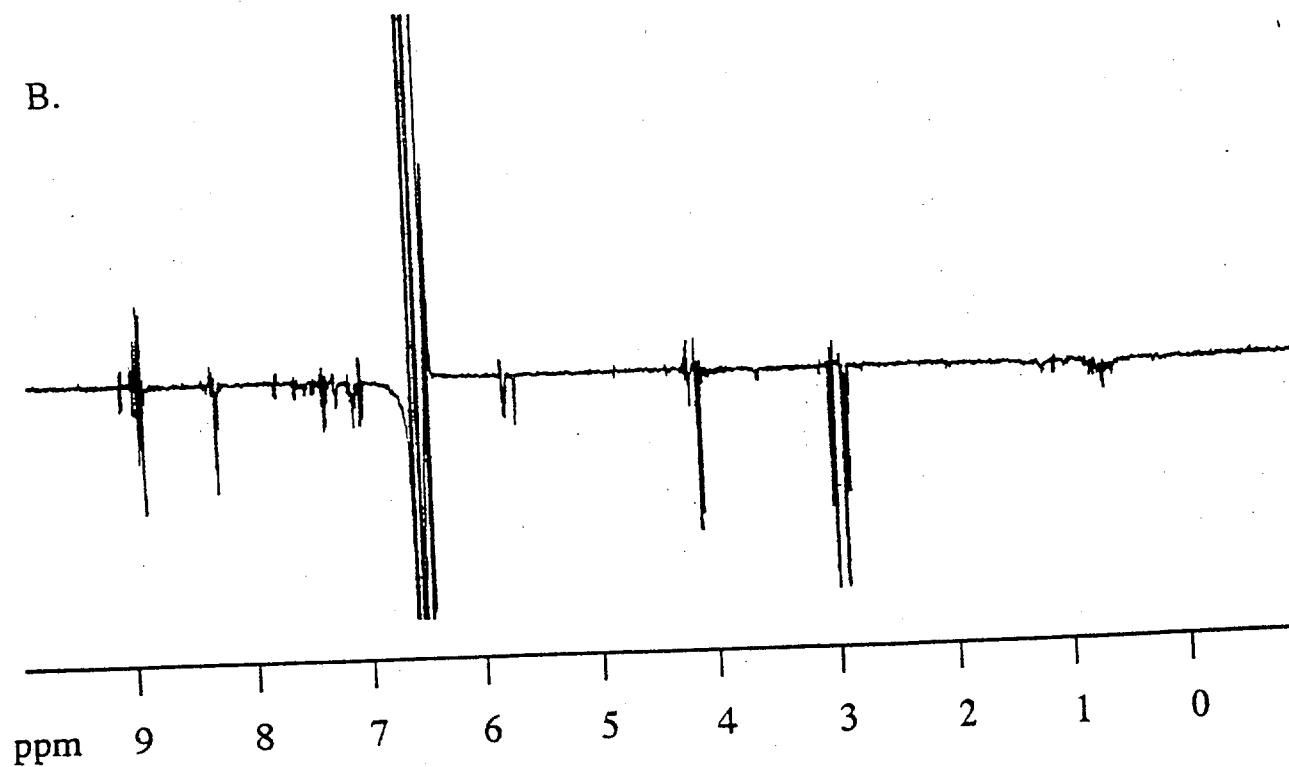


Figure S2

