

Supporting Information for:

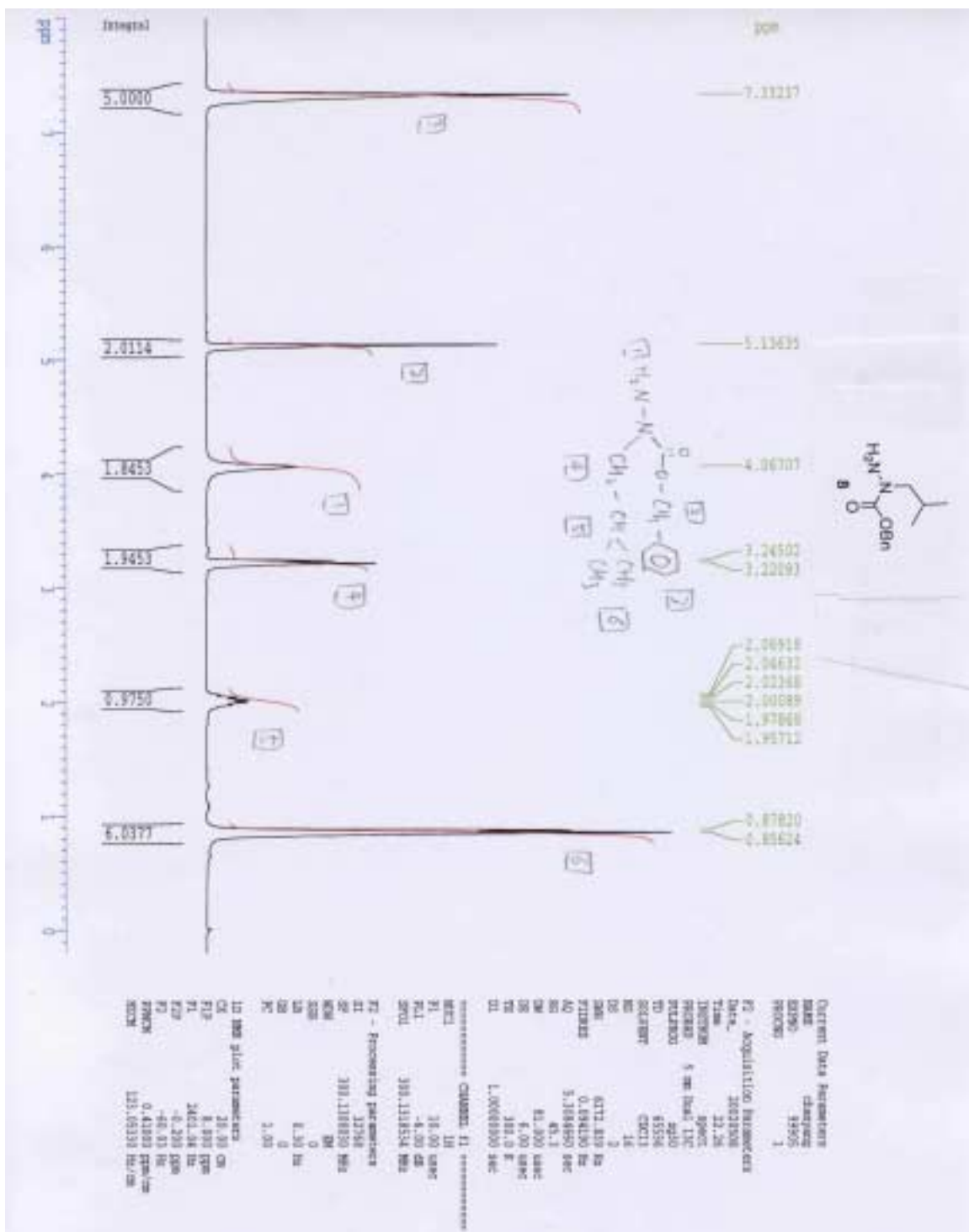
" The Synthesis of Azapeptidomimetic β -Lactam
Molecules as Potential Protease Inhibitors"

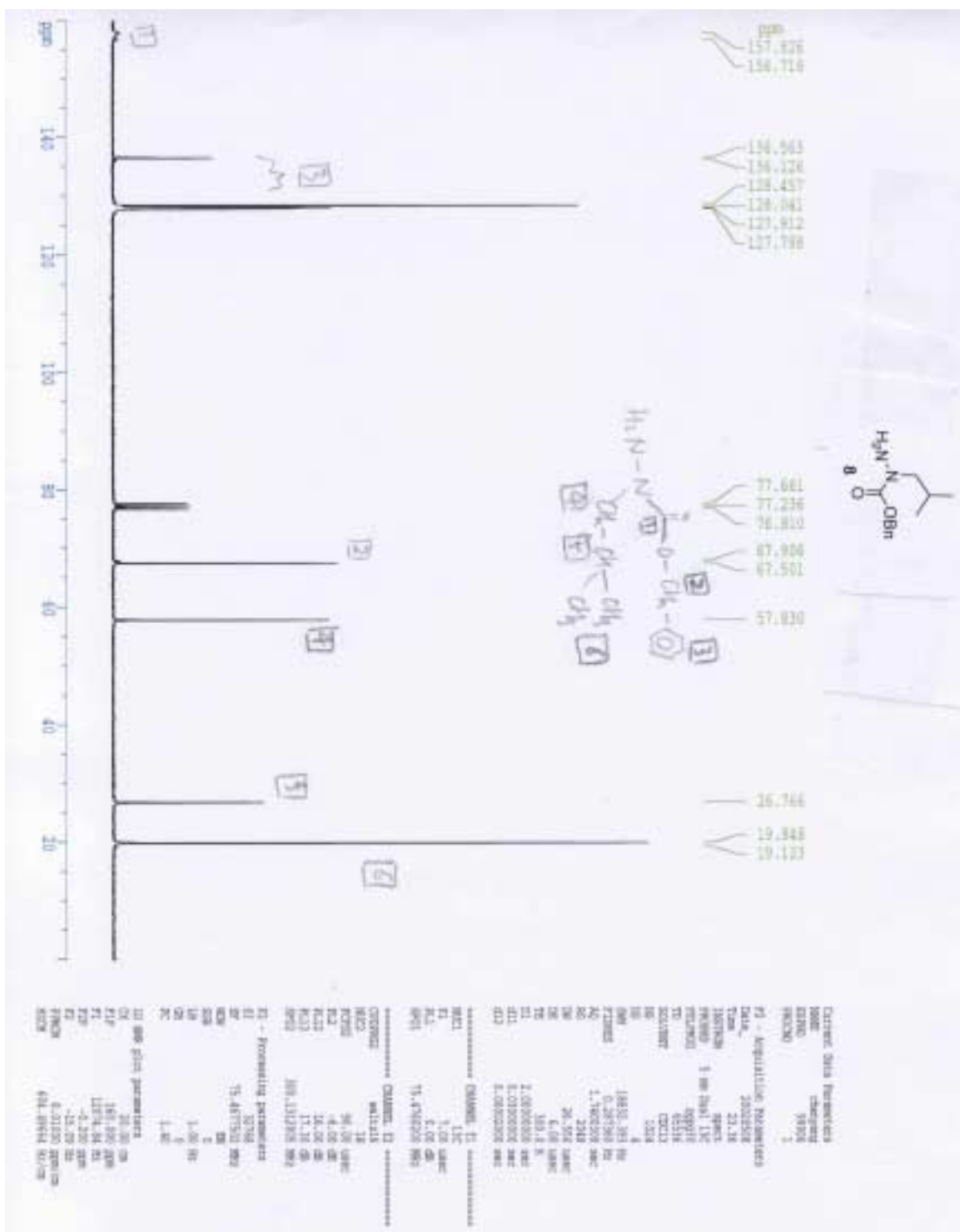
William P. Malachowski, Chenyang Tie, Katherine Wang, and Robert L. Broadrup*

Table of Contents

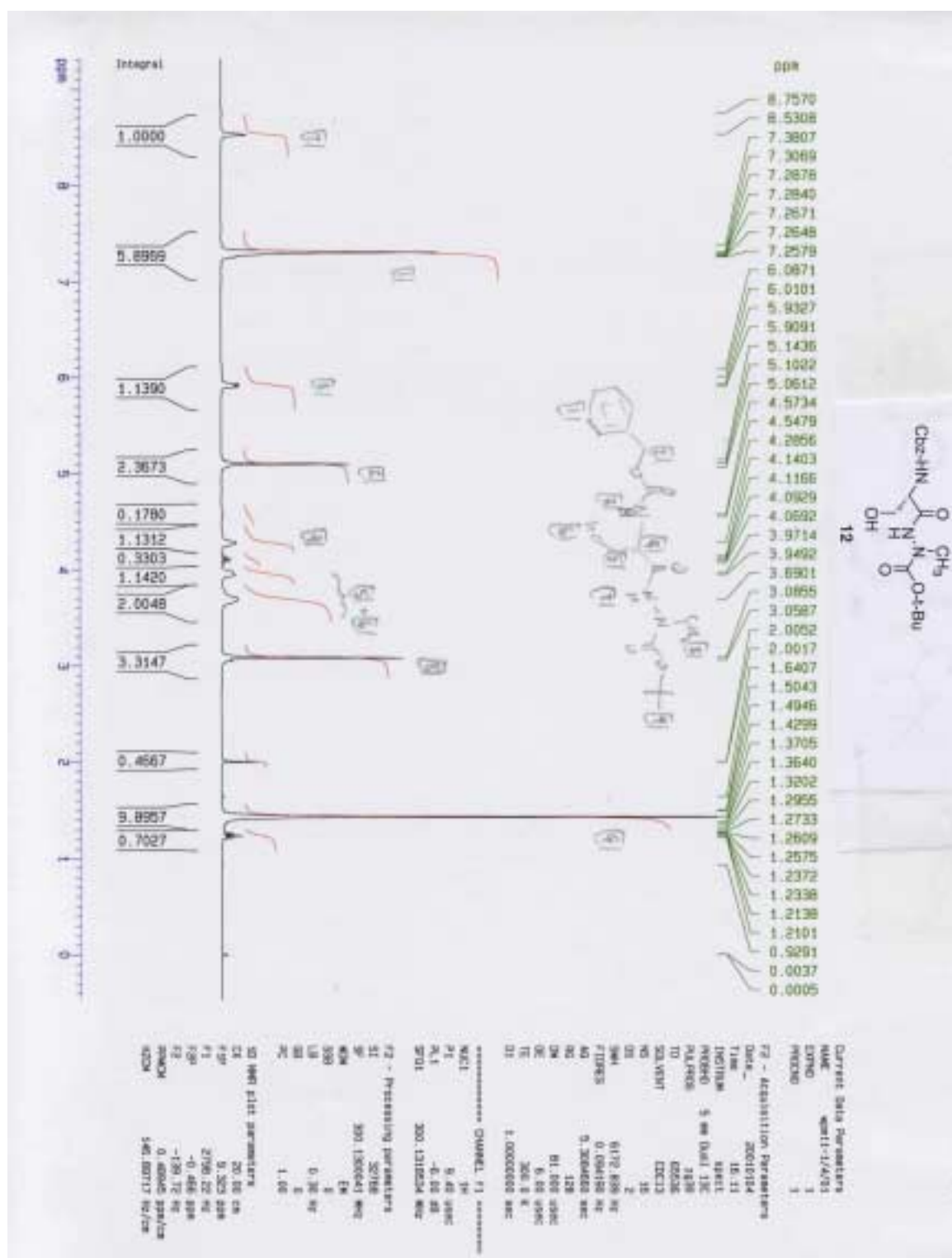
<u>Page:</u>	<u>Item</u>
S3	^1H NMR spectrum of compound 7
S4	^{13}C NMR spectrum of compound 7
S5	^1H NMR spectrum of compound 8
S6	^{13}C NMR spectrum of compound 8
S7	^1H NMR spectrum of compound 9
S8	^{13}C NMR spectrum of compound 9
S9	^1H NMR spectrum of compound 10
S10	^{13}C NMR spectrum of compound 10
S11	^1H NMR spectrum of compound 12
S12	^{13}C NMR spectrum of compound 12
S13	^1H NMR spectrum of compound 14
S14	^{13}C NMR spectrum of compound 14
S15	^1H NMR spectrum of compound 16
S16	^{13}C NMR spectrum of compound 16
S17	^1H NMR spectrum of compound 18
S18	^{13}C NMR spectrum of compound 18

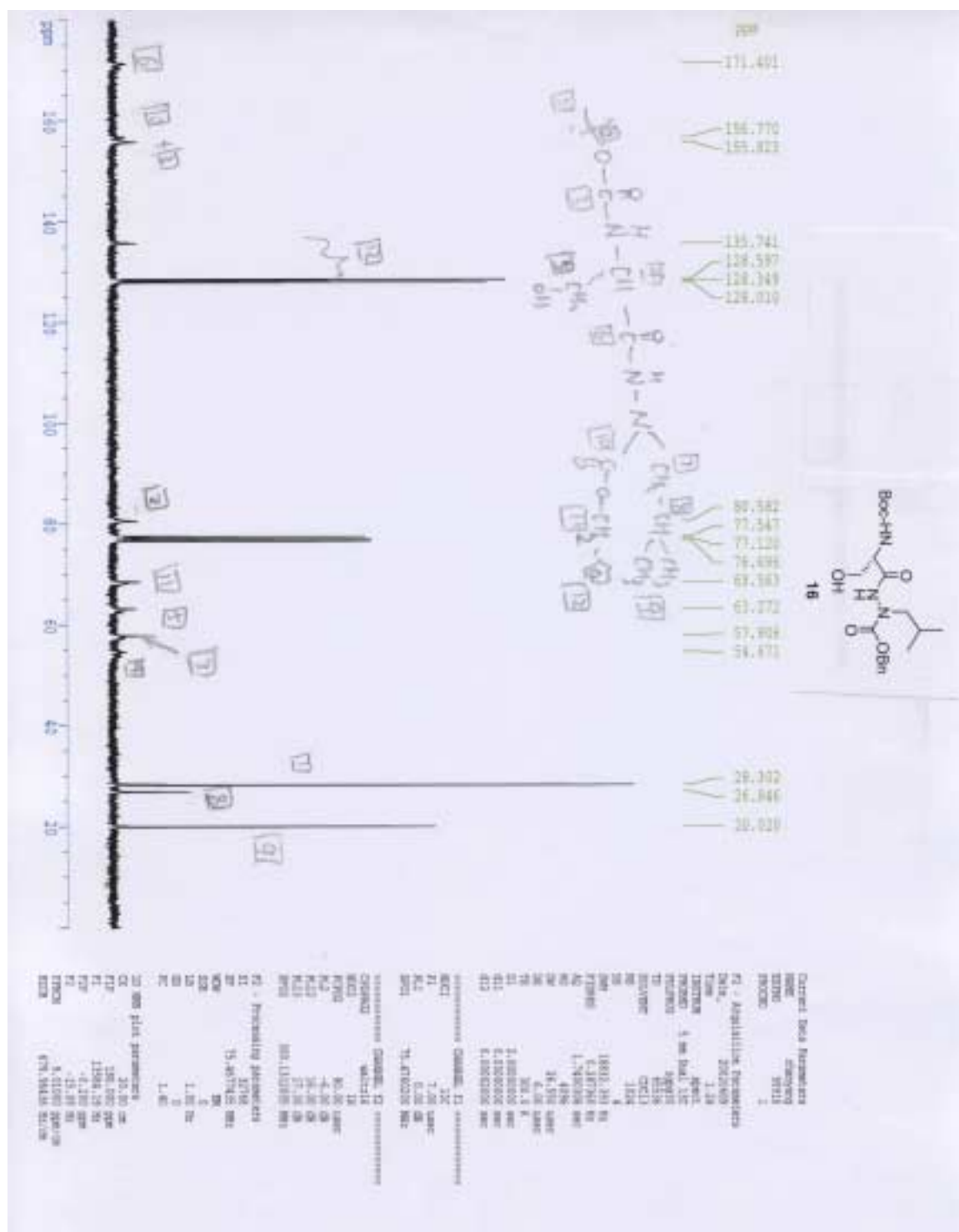
S19	^1H NMR spectrum of compound 20
S20	^{13}C NMR spectrum of compound 20
S21	^1H NMR spectrum of compound 21
S22	^{13}C NMR spectrum of compound 21
S23	^1H NMR spectrum of compound 27
S24	^{13}C NMR spectrum of compound 27
S25	^1H NMR spectrum of compound 28
S26	^{13}C NMR spectrum of compound 28
S27	^1H NMR spectrum of compound 29
S28	^{13}C NMR spectrum of compound 29
S29	^1H NMR spectrum of compound 26
S30	^{13}C NMR spectrum of compound 26

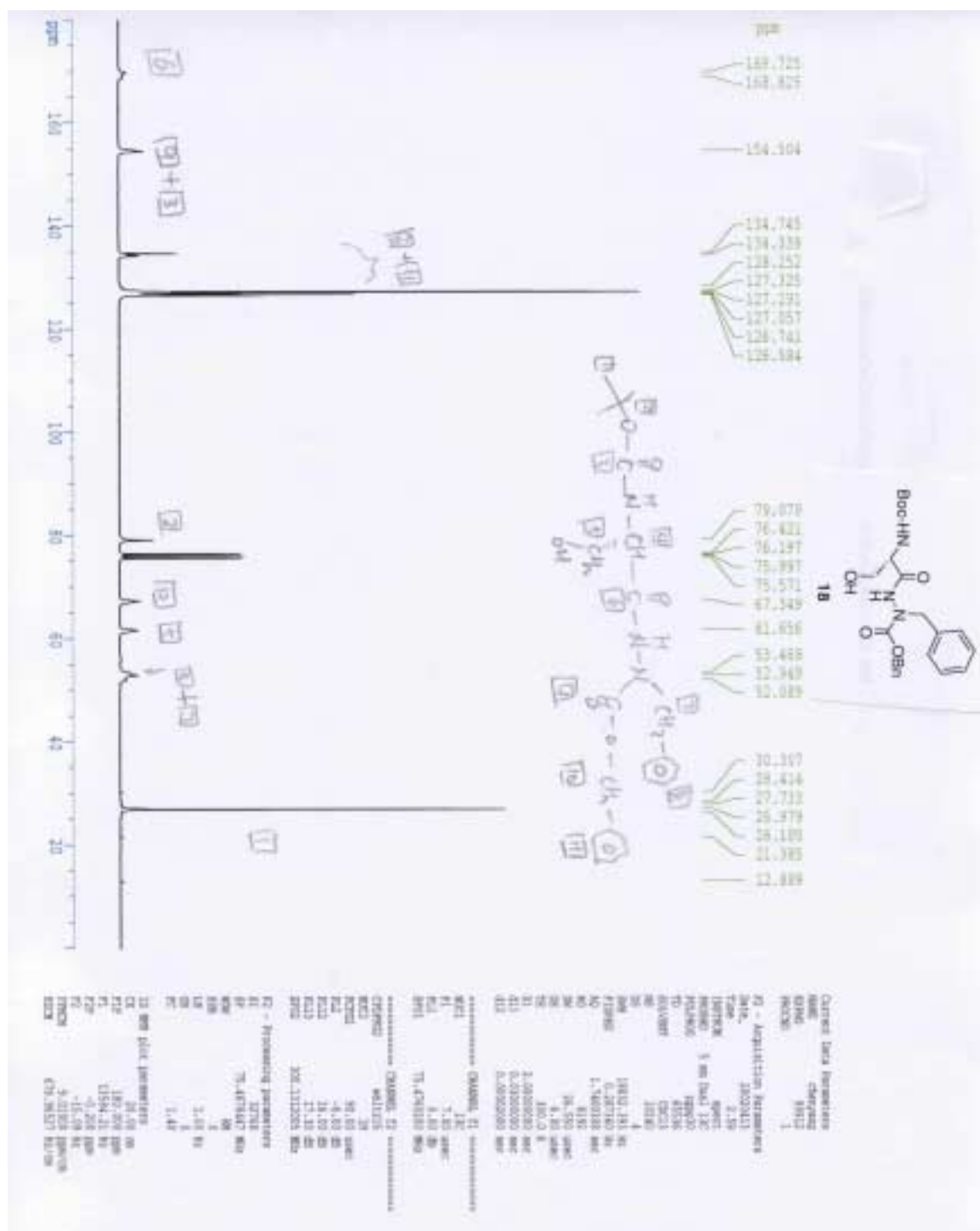


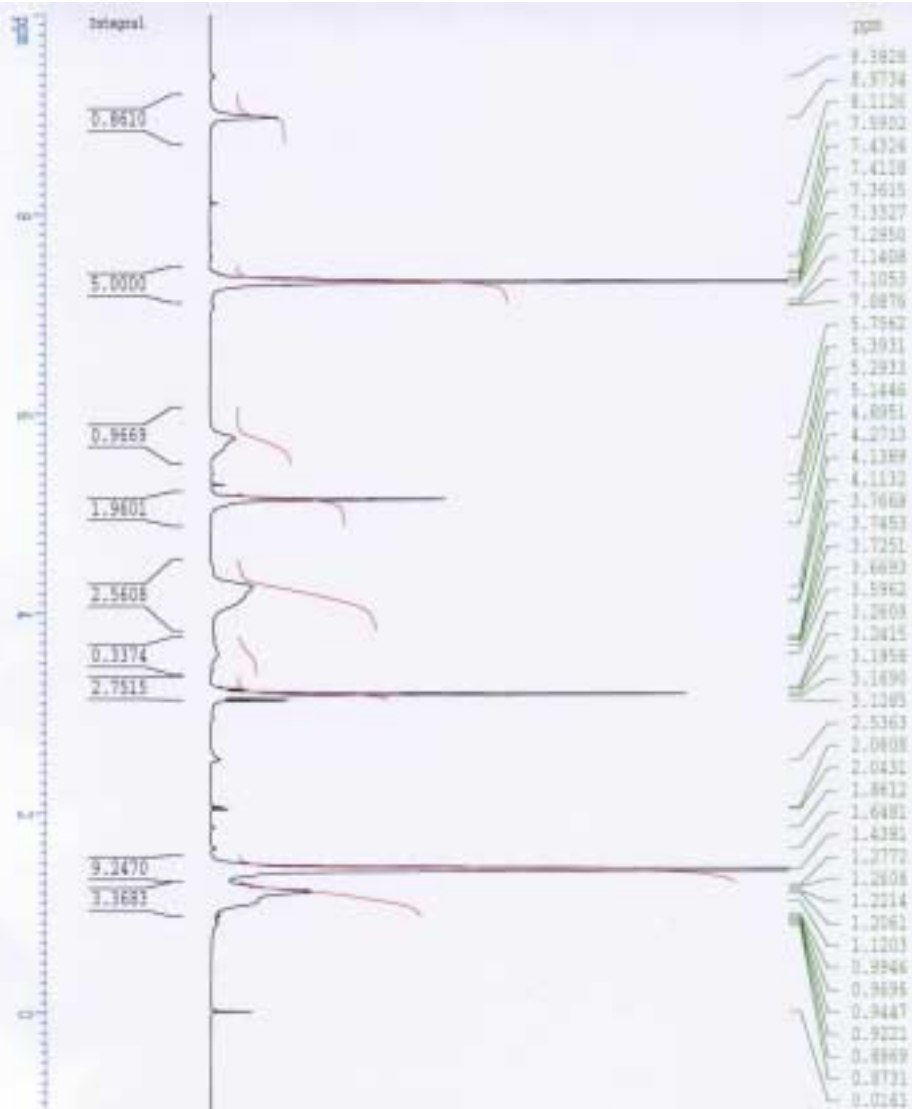
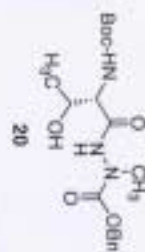










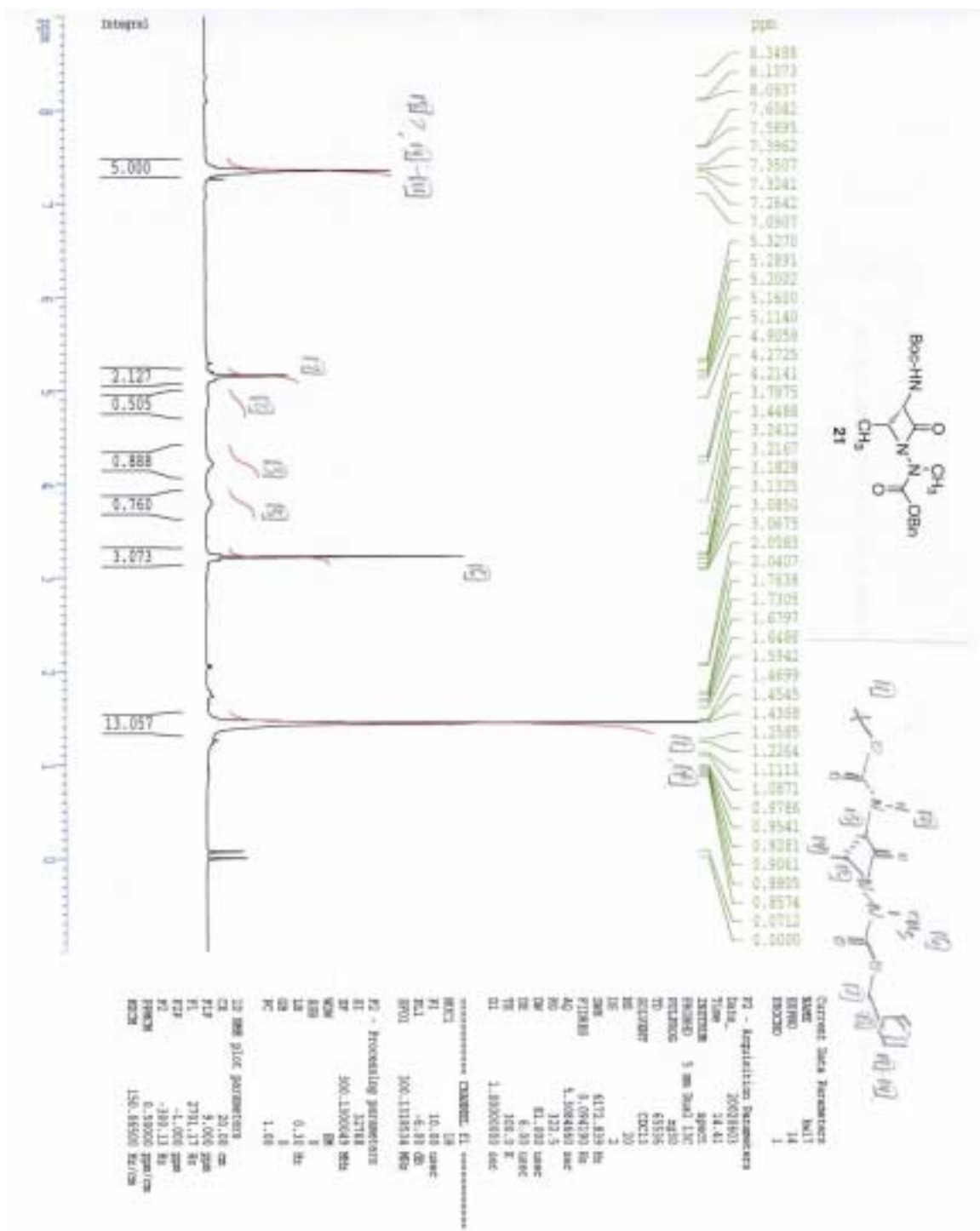


Current Data Parameters
NAME 20c17
EXPNO 1
PROCNO 1
Date_ 20220715
Time 18.31
INSTRUM spect
PROBHD 5 mm BBO-13C
PULPROG zgpg30
TD 65536
SOLVENT CDCl3
NS 12
DS 2
SWH 6172.879 Hz
AQ 0.094130 Hz
RG 1.004480 sec
Acq 11.8
NUC 13C
NUC1 13C
NUC2 13C
P1 160.0 Hz
PC 1.00000000 sec

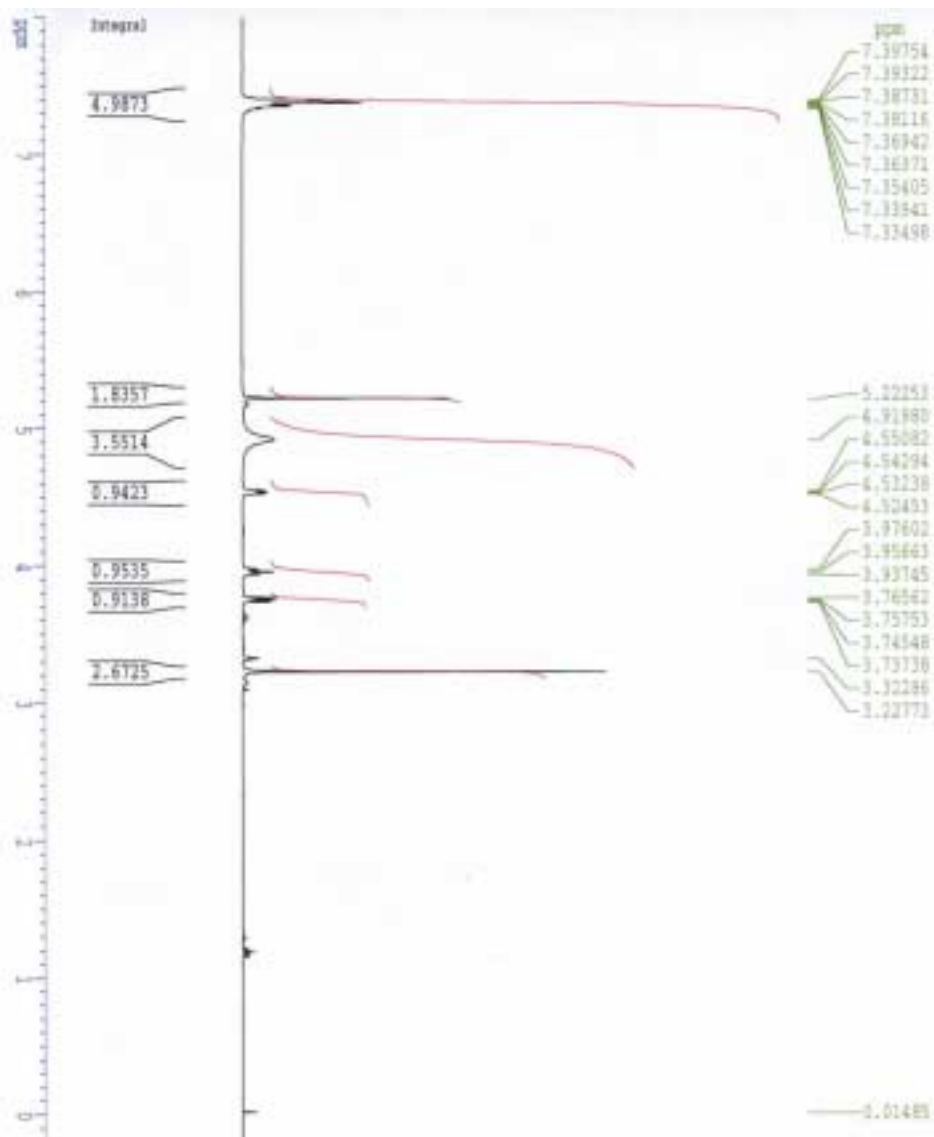
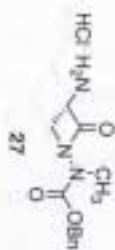
===== CHANNEL f1 =====
NUC1 13C
P1 16.00 sec
PL 0.00 dB
PR 0.00 dB
SFO1 101.62536 MHz

F2 - Processing parameters
SI 32768
SF 101.625360 MHz
WDW EM
SSB 0
GB 0.00 Hz
PC 1.00

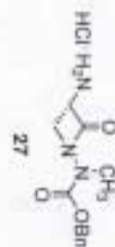
1D SSB plot parameters
F2 16.00 Hz
F1P 16.00 Hz
F1 2001.35 Hz
F1P -1.888 Hz
F2 -900.13 Hz
F2PCN 0.55889 ppm/cm
F2PC 145.07136 Hz/cm





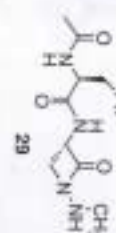


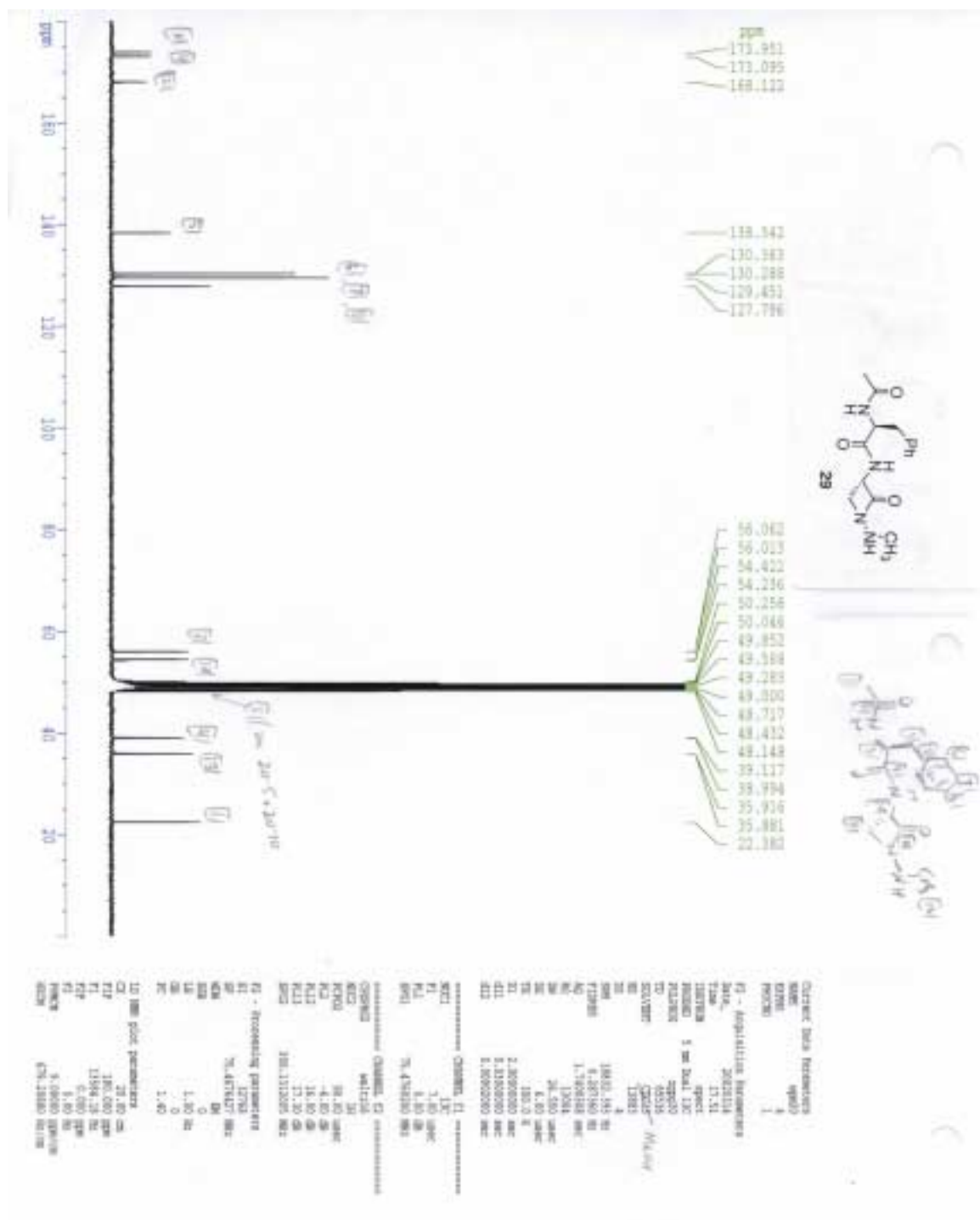
Current Data Parameters	
NAME	27
EXPNO	1
PROCNO	1
F2 - Acquisition Parameters	
Date_	20200312
Time	15.21
INSTRUM	spect
PROBHD	5 mm BBO-1H
PULPROG	zgpg30
TD	65536
TO	0.0516
DELTA	1.0
DELTA2	1.0
DELTA3	1.0
DELTA4	1.0
DELTA5	1.0
DELTA6	1.0
DELTA7	1.0
DELTA8	1.0
DELTA9	1.0
DELTA10	1.0
DELTA11	1.0
DELTA12	1.0
DELTA13	1.0
DELTA14	1.0
DELTA15	1.0
DELTA16	1.0
DELTA17	1.0
DELTA18	1.0
DELTA19	1.0
DELTA20	1.0
DELTA21	1.0
DELTA22	1.0
DELTA23	1.0
DELTA24	1.0
DELTA25	1.0
DELTA26	1.0
DELTA27	1.0
DELTA28	1.0
DELTA29	1.0
DELTA30	1.0
DELTA31	1.0
DELTA32	1.0
DELTA33	1.0
DELTA34	1.0
DELTA35	1.0
DELTA36	1.0
DELTA37	1.0
DELTA38	1.0
DELTA39	1.0
DELTA40	1.0
DELTA41	1.0
DELTA42	1.0
DELTA43	1.0
DELTA44	1.0
DELTA45	1.0
DELTA46	1.0
DELTA47	1.0
DELTA48	1.0
DELTA49	1.0
DELTA50	1.0
DELTA51	1.0
DELTA52	1.0
DELTA53	1.0
DELTA54	1.0
DELTA55	1.0
DELTA56	1.0
DELTA57	1.0
DELTA58	1.0
DELTA59	1.0
DELTA60	1.0
DELTA61	1.0
DELTA62	1.0
DELTA63	1.0
DELTA64	1.0
DELTA65	1.0
DELTA66	1.0
DELTA67	1.0
DELTA68	1.0
DELTA69	1.0
DELTA70	1.0
DELTA71	1.0
DELTA72	1.0
DELTA73	1.0
DELTA74	1.0
DELTA75	1.0
DELTA76	1.0
DELTA77	1.0
DELTA78	1.0
DELTA79	1.0
DELTA80	1.0
DELTA81	1.0
DELTA82	1.0
DELTA83	1.0
DELTA84	1.0
DELTA85	1.0
DELTA86	1.0
DELTA87	1.0
DELTA88	1.0
DELTA89	1.0
DELTA90	1.0
DELTA91	1.0
DELTA92	1.0
DELTA93	1.0
DELTA94	1.0
DELTA95	1.0
DELTA96	1.0
DELTA97	1.0
DELTA98	1.0
DELTA99	1.0
DELTA100	1.0
DELTA101	1.0
DELTA102	1.0
DELTA103	1.0
DELTA104	1.0
DELTA105	1.0
DELTA106	1.0
DELTA107	1.0
DELTA108	1.0
DELTA109	1.0
DELTA110	1.0
DELTA111	1.0
DELTA112	1.0
DELTA113	1.0
DELTA114	1.0
DELTA115	1.0
DELTA116	1.0
DELTA117	1.0
DELTA118	1.0
DELTA119	1.0
DELTA120	1.0
DELTA121	1.0
DELTA122	1.0
DELTA123	1.0
DELTA124	1.0
DELTA125	1.0
DELTA126	1.0
DELTA127	1.0
DELTA128	1.0
DELTA129	1.0
DELTA130	1.0
DELTA131	1.0
DELTA132	1.0
DELTA133	1.0
DELTA134	1.0
DELTA135	1.0
DELTA136	1.0
DELTA137	1.0
DELTA138	1.0
DELTA139	1.0
DELTA140	1.0
DELTA141	1.0
DELTA142	1.0
DELTA143	1.0
DELTA144	1.0
DELTA145	1.0
DELTA146	1.0
DELTA147	1.0
DELTA148	1.0
DELTA149	1.0
DELTA150	1.0
DELTA151	1.0
DELTA152	1.0
DELTA153	1.0
DELTA154	1.0
DELTA155	1.0
DELTA156	1.0
DELTA157	1.0
DELTA158	1.0
DELTA159	1.0
DELTA160	1.0
DELTA161	1.0
DELTA162	1.0
DELTA163	1.0
DELTA164	1.0
DELTA165	1.0
DELTA166	1.0
DELTA167	1.0
DELTA168	1.0
DELTA169	1.0
DELTA170	1.0
DELTA171	1.0
DELTA172	1.0
DELTA173	1.0
DELTA174	1.0
DELTA175	1.0
DELTA176	1.0
DELTA177	1.0
DELTA178	1.0
DELTA179	1.0
DELTA180	1.0
DELTA181	1.0
DELTA182	1.0
DELTA183	1.0
DELTA184	1.0
DELTA185	1.0
DELTA186	1.0
DELTA187	1.0
DELTA188	1.0
DELTA189	1.0
DELTA190	1.0
DELTA191	1.0
DELTA192	1.0
DELTA193	1.0
DELTA194	1.0
DELTA195	1.0
DELTA196	1.0
DELTA197	1.0
DELTA198	1.0
DELTA199	1.0
DELTA200	1.0
DELTA201	1.0
DELTA202	1.0
DELTA203	1.0
DELTA204	1.0
DELTA205	1.0
DELTA206	1.0
DELTA207	1.0
DELTA208	1.0
DELTA209	1.0
DELTA210	1.0
DELTA211	1.0
DELTA212	1.0
DELTA213	1.0
DELTA214	1.0
DELTA215	1.0
DELTA216	1.0
DELTA217	1.0
DELTA218	1.0
DELTA219	1.0
DELTA220	1.0
DELTA221	1.0
DELTA222	1.0
DELTA223	1.0
DELTA224	1.0
DELTA225	1.0
DELTA226	1.0
DELTA227	1.0
DELTA228	1.0
DELTA229	1.0
DELTA230	1.0
DELTA231	1.0
DELTA232	1.0
DELTA233	1.0
DELTA234	1.0
DELTA235	1.0
DELTA236	1.0
DELTA237	1.0
DELTA238	1.0
DELTA239	1.0
DELTA240	1.0
DELTA241	1.0
DELTA242	1.0
DELTA243	1.0
DELTA244	1.0
DELTA245	1.0
DELTA246	1.0
DELTA247	1.0
DELTA248	1.0
DELTA249	1.0
DELTA250	1.0
DELTA251	1.0
DELTA252	1.0
DELTA253	1.0
DELTA254	1.0
DELTA255	1.0
DELTA256	1.0
DELTA257	1.0
DELTA258	1.0
DELTA259	1.0
DELTA260	1.0
DELTA261	1.0
DELTA262	1.0
DELTA263	1.0
DELTA264	1.0
DELTA265	1.0
DELTA266	1.0
DELTA267	1.0
DELTA268	1.0
DELTA269	1.0
DELTA270	1.0
DELTA271	1.0
DELTA272	1.0
DELTA273	1.0
DELTA274	1.0
DELTA275	1.0
DELTA276	1.0
DELTA277	1.0
DELTA278	1.0
DELTA279	1.0
DELTA280	1.0
DELTA281	1.0
DELTA282	1.0
DELTA283	1.0
DELTA284	1.0
DELTA285	1.0
DELTA286	1.0
DELTA287	1.0
DELTA288	1.0
DELTA289	1.0
DELTA290	1.0
DELTA291	1.0
DELTA292	1.0
DELTA293	1.0
DELTA294	1.0
DELTA295	1.0
DELTA296	1.0
DELTA297	1.0
DELTA298	1.0
DELTA299	1.0
DELTA300	1.0
DELTA301	1.0
DELTA302	1.0
DELTA303	1.0
DELTA304	1.0
DELTA305	1.0
DELTA306	1.0
DELTA307	1.0
DELTA308	1.0
DELTA309	1.0
DELTA310	1.0
DELTA311	1.0
DELTA312	1.0
DELTA313	1.0
DELTA314	1.0
DELTA315	1.0
DELTA316	1.0
DELTA317	1.0
DELTA318	1.0
DELTA319	1.0
DELTA320	1.0
DELTA321	1.0
DELTA322	1.0
DELTA323	1.0
DELTA324	1.0
DELTA325	1.0
DELTA326	1.0
DELTA327	1.0
DELTA328	1.0
DELTA329	1.0
DELTA330	1.0
DELTA331	1.0
DELTA332	1.0
DELTA333	1.0
DELTA334	1.0
DELTA335	1.0
DELTA336	1.0
DELTA337	1.0
DELTA338	1.0
DELTA339	1.0
DELTA340	1.0
DELTA341	1.0
DELTA342	1.0
DELTA343	1.0
DELTA344	1.0
DELTA345	1.0
DELTA346	1.0
DELTA347	1.0
DELTA348	1.0
DELTA349	1.0
DELTA350	1.0
DELTA351	1.0
DELTA352	1.0
DELTA353	1.0
DELTA354	1.0
DELTA355	1.0
DELTA356	1.0
DELTA357	1.0
DELTA358	1.0
DELTA359	1.0
DELTA360	1.0
DELTA361	1.0
DELTA362	1.0
DELTA363	1.0
DELTA364	1.0
DELTA365	1.0
DELTA366	1.0
DELTA367	1.0
DELTA368	1.0
DELTA369	1.0
DELTA370	1.0
DELTA371	1.0
DELTA372	1.0
DELTA373	1.0
DELTA374	1.0
DELTA375	1.0
DELTA376	1.0
DELTA377	1.0
DELTA378	1.0
DELTA379	1.0
DELTA380	1.0
DELTA381	1.0
DELTA382	1.0
DELTA383	1.0
DELTA384	1.0
DELTA385	1.0
DELTA386	1.0
DELTA387	1.0
DELTA388	1.0
DELTA389	1.0
DELTA390	1.0
DELTA391	1.0
DELTA392	1.0
DELTA393	1.0
DELTA394	1.0
DELTA395	1.0
DELTA396	1.0
DELTA397	1.0
DELTA398	1.0
DELTA399	1.0
DELTA400	1.0
DELTA401	1.0
DELTA402	1.0
DELTA403	1.0
DELTA404	1.0
DELTA405	1.0
DELTA406	1.0
DELTA407	1.0
DELTA408	1.0
DELTA409	1.0
DELTA410	1.0
DELTA411	1.0
DELTA412	1.0
DELTA413	1.0
DELTA414	1.0
DELTA415	1.0
DELTA416	1.0
DELTA417	1.0
DELTA418	1.0
DELTA419	1.0
DELTA420	1.0
DELTA421	1.0
DELTA422	1.0
DELTA423	1.0
DELTA424	1.0
DELTA425	1.0
DELTA426	1.0
DELTA427	1.0
DELTA428	1.0
DELTA429	1.0
DELTA430	1.0
DELTA431	1.0
DELTA432	1.0
DELTA433	1.0
DELTA434	1.0
DELTA435	1.0
DELTA436	1.0
DELTA437	1.0
DELTA438	1.0
DELTA439	1.0
DELTA440	1.0
DELTA441	1.0
DELTA442	1.0
DELTA443	1.0
DELTA444	1.0
DELTA445	1.0
DELTA446	1.0
DELTA447	1.0
DELTA448	1.0
DELTA449	1.0
DELTA450	1.0
DELTA451	1.0
DELTA452	1.0
DELTA453	1.0
DELTA454	1.0
DELTA455	1.0
DELTA456	1.0
DELTA457	1.0
DELTA458	1.0
DELTA459	1.0
DELTA460	1.0
DELTA461	1.0
DELTA462	1.0
DELTA463	1.0
DELTA464	1.0
DELTA465	1.0
DELTA466	1.0
DELTA467	1.0
DELTA468	1.0
DELTA469	1.0
DELTA470	1.0
DELTA471	1.0
DELTA472	1.0
DELTA473	1.0
DELTA474	1.0
DELTA475	

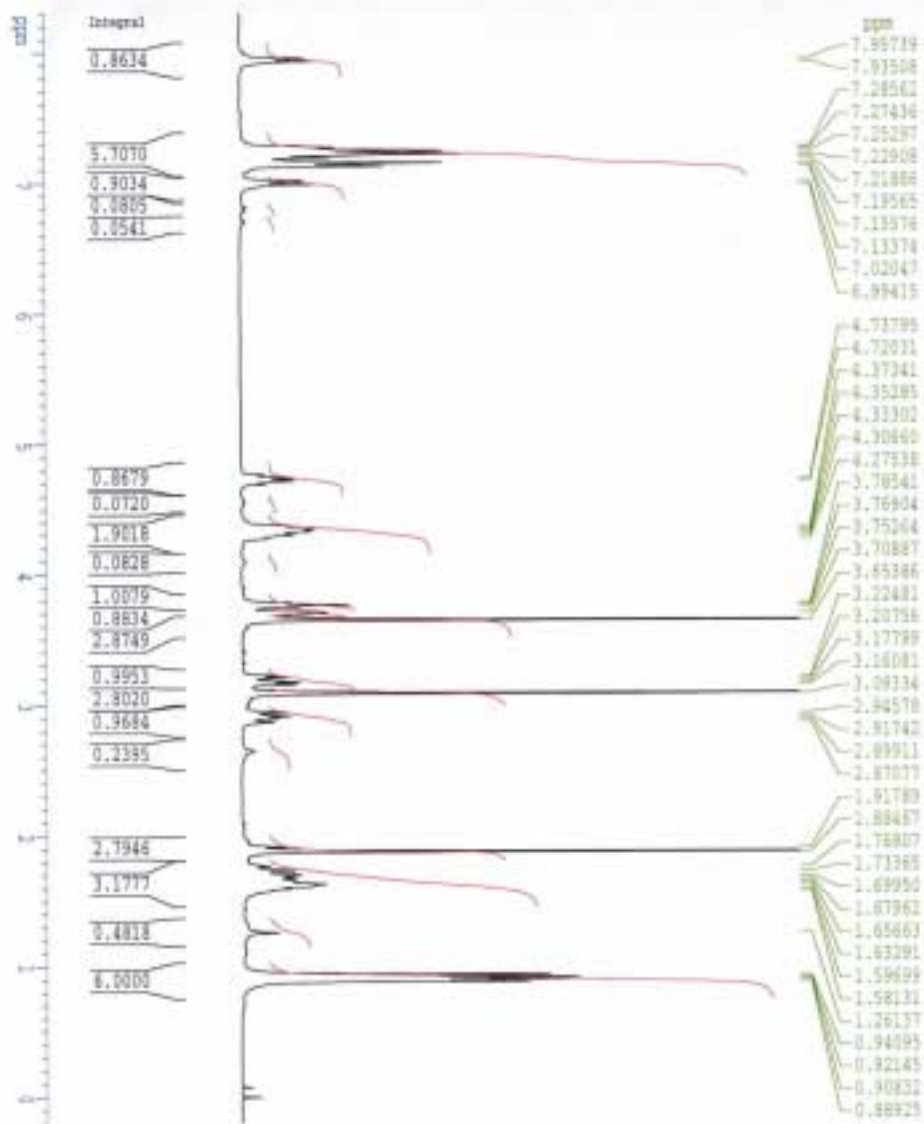
S24



20.65 cm
 8.765 gpm
 1061.67 Hz
 -8.243 gpm
 -72.98 Hz
 0.42216 gpm/cm
 126.702216 Hz/cm

S27





Current Data Parameters
NAME:
EXPNO: 118
PROCNO: 1
F2 - Acquisition Parameters
Date_ : 20111221
Time: 11.35
INSTRUM: spect
PROBHD: 5 mm QNP 1H
PULPROG: zgpg30
TD: 65536
SOLVENT: CDCl3
NS: 16
DS: 2
SWH: 6172.619 Hz
FIDRES: 0.394136 Hz
AQ: 9.1386668 sec
RG: 71.8
RM: 81.000 Hz
DE: 4.00 Hz
TE: 300.0 K
SI: 1.00000000 sec

===== CHANNEL f1 =====
NUC1: 1H
P1: 12.00 Hz
PL1: -4.00 dB
RF01: 399.1318534 MHz

F2 - Processing parameters
SI: 17368
SF: 399.1318534 MHz
WDW: EM
SSB: 0
LB: 8.30 Hz
GB: 0
PC: 1.30

===== 1D NMR plot parameters =====
SI: 17368
SF: 399.1318534 MHz
WDW: EM
SSB: 0
LB: 8.30 Hz
GB: 0
PC: 1.30

