

SUPPLEMENTARY MATERIAL

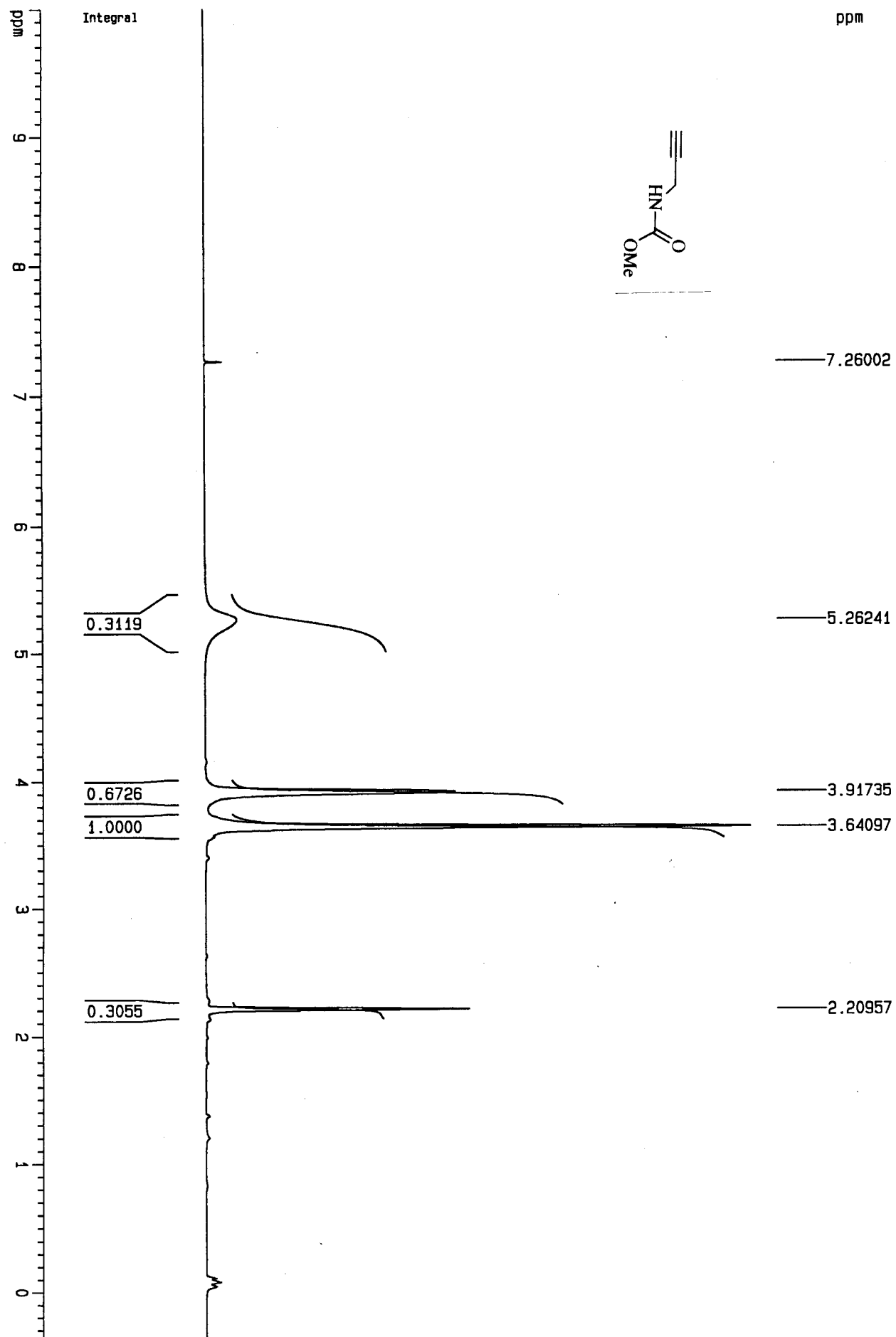
SYNTHESIS OF THE C₁'-C₁₁' SEGMENT OF LEUCASCANDROLIDE A

Peter Wipf* and Thomas H. Graham

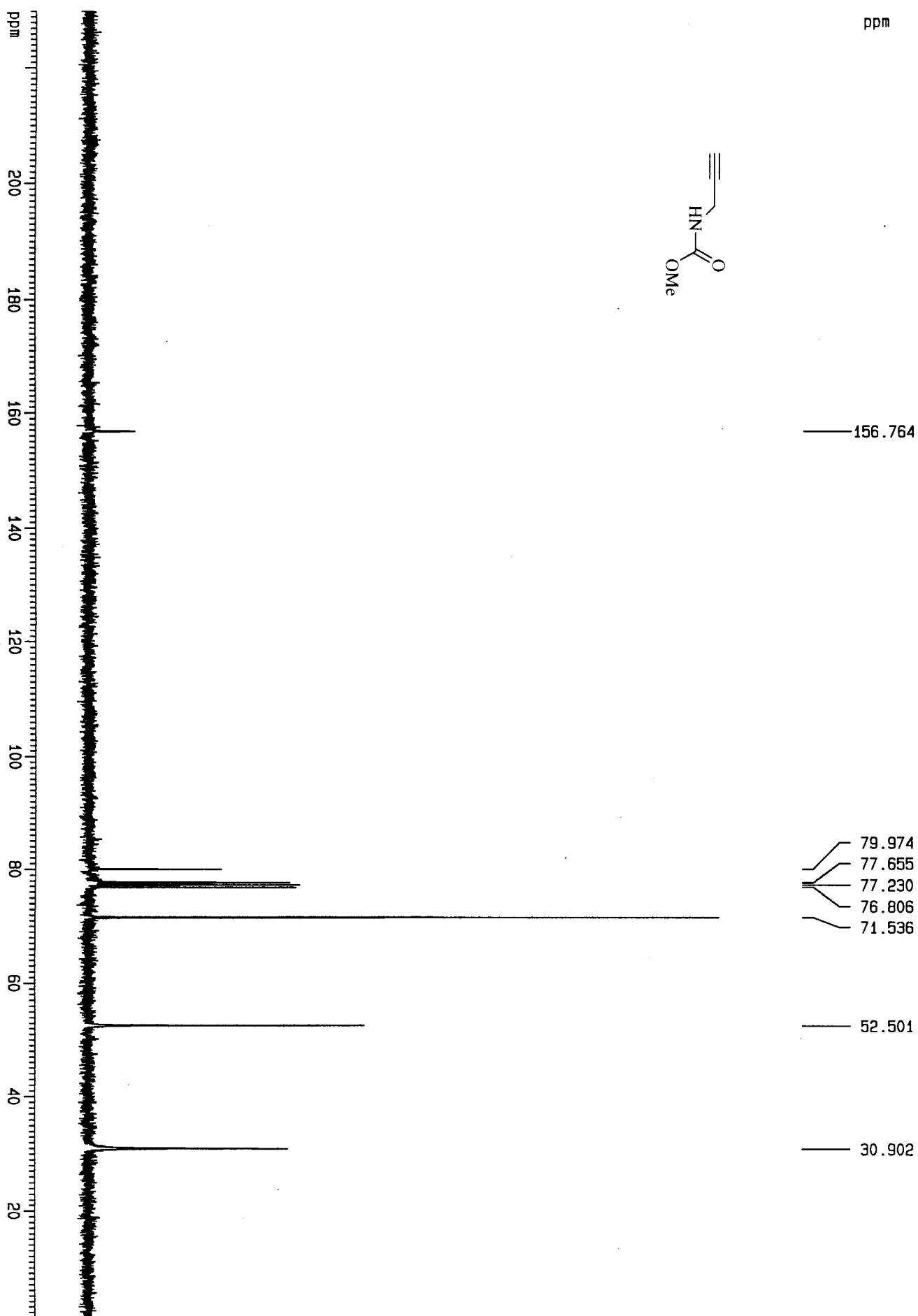
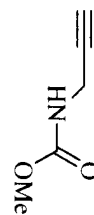
Department of Chemistry, University of Pittsburgh, Pittsburgh, Pennsylvania 15260

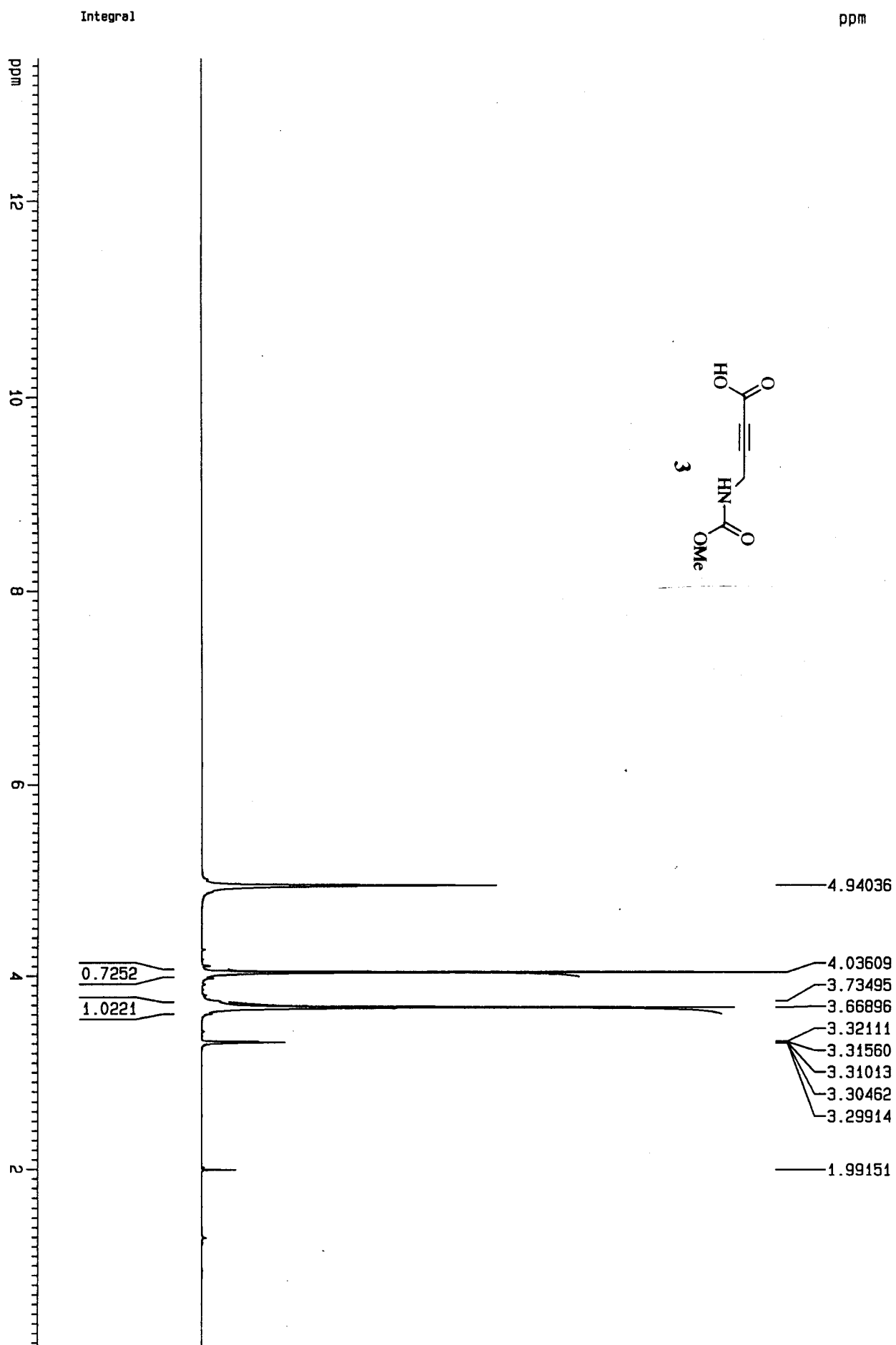
pwipf+@pitt.edu

¹H and ¹³C NMR spectra for all new compounds.

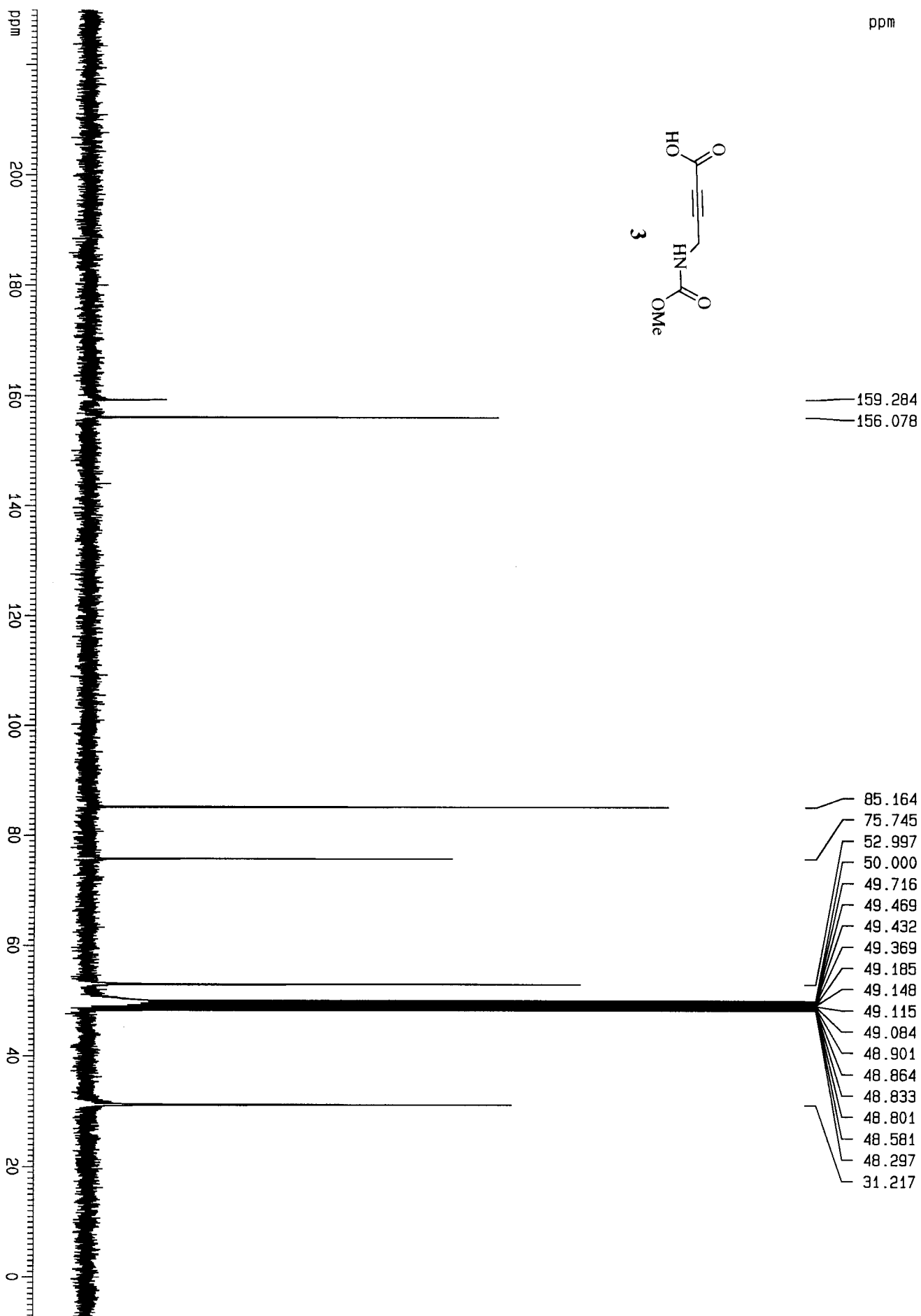
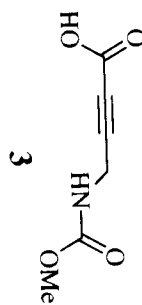


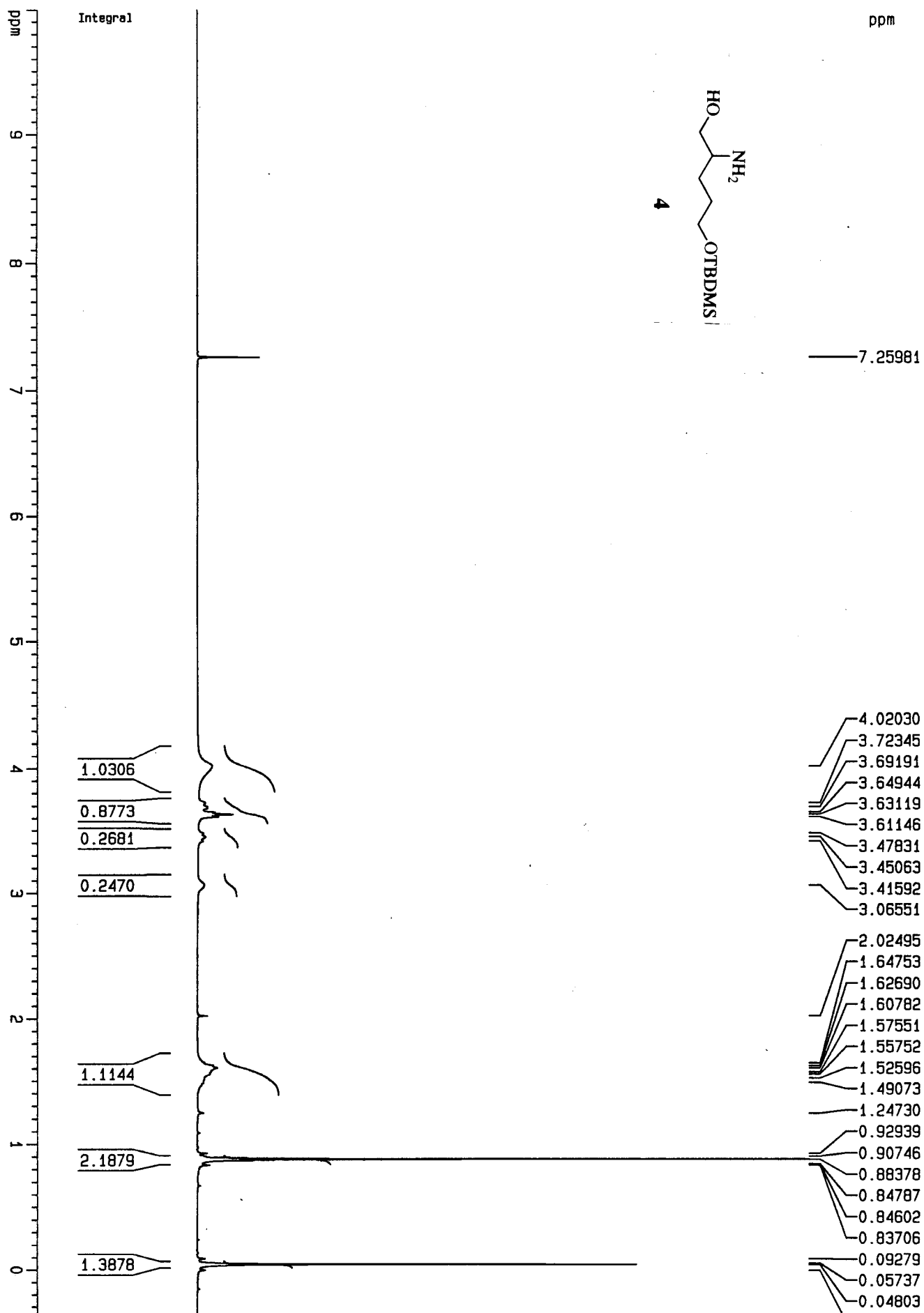
ppm



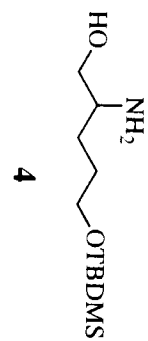


ppm

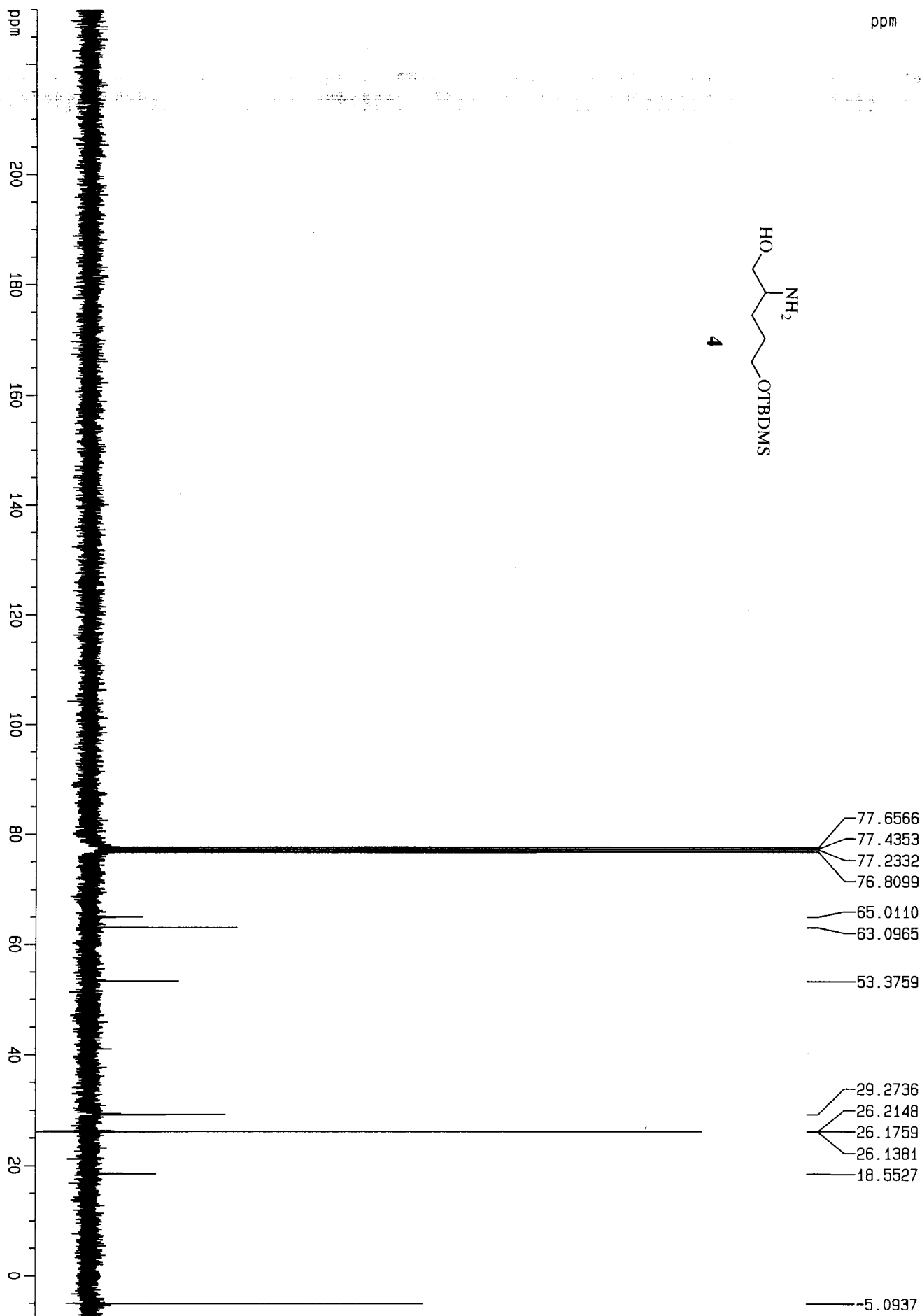




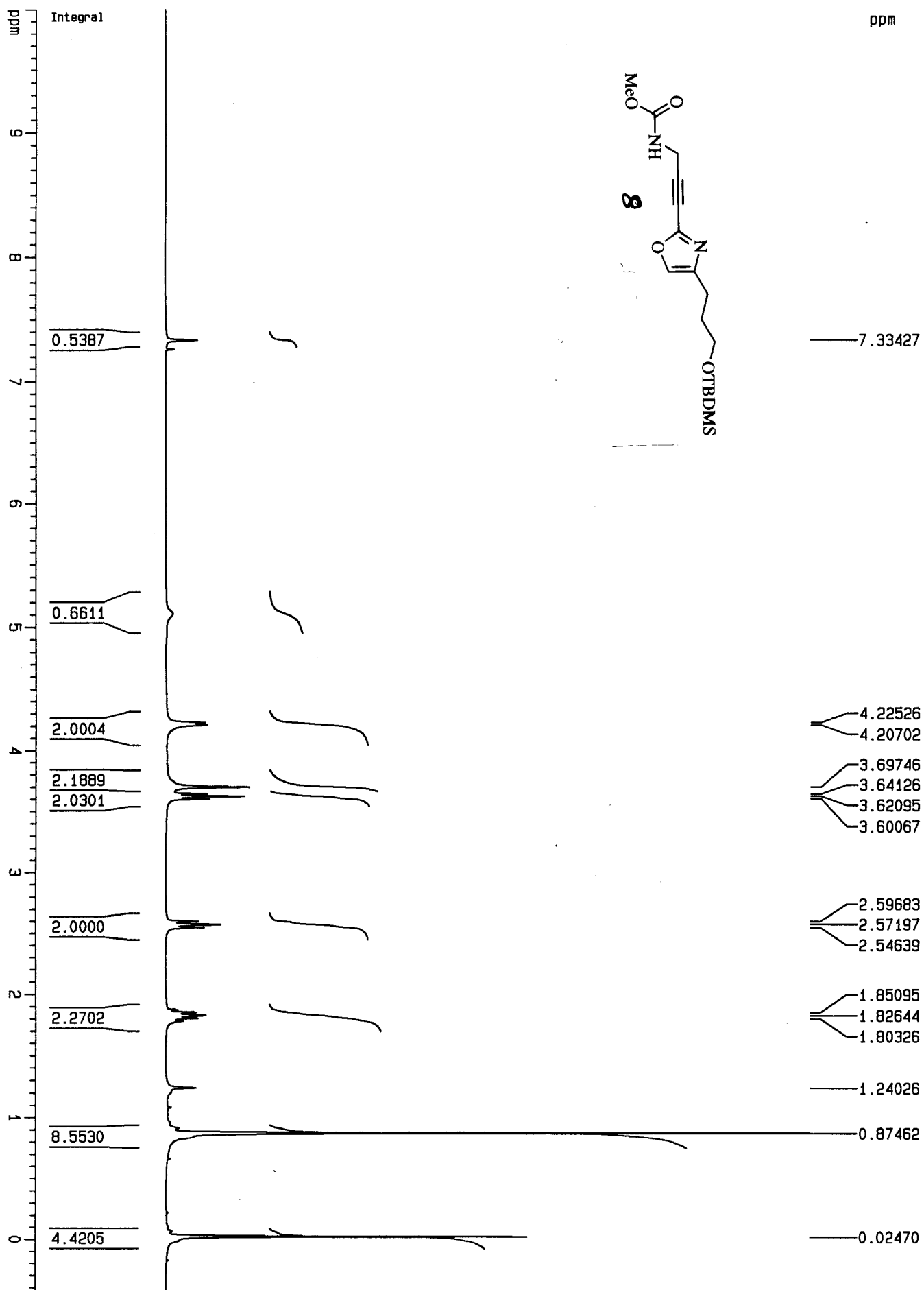
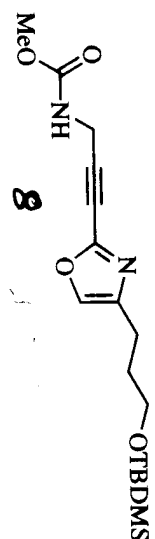
ppm



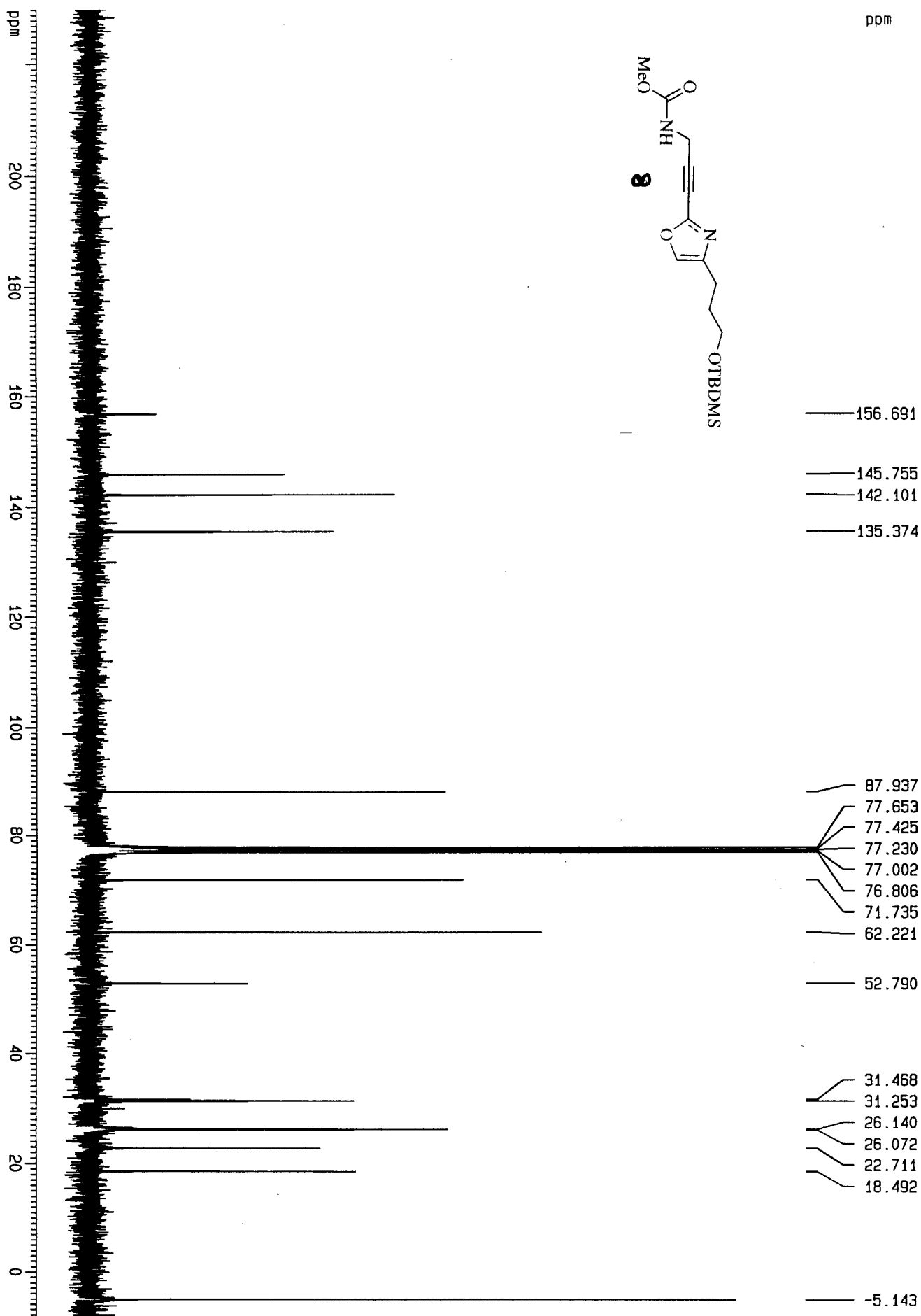
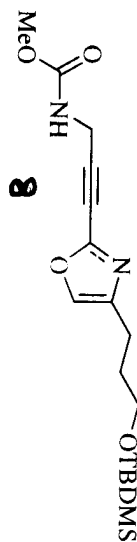
4

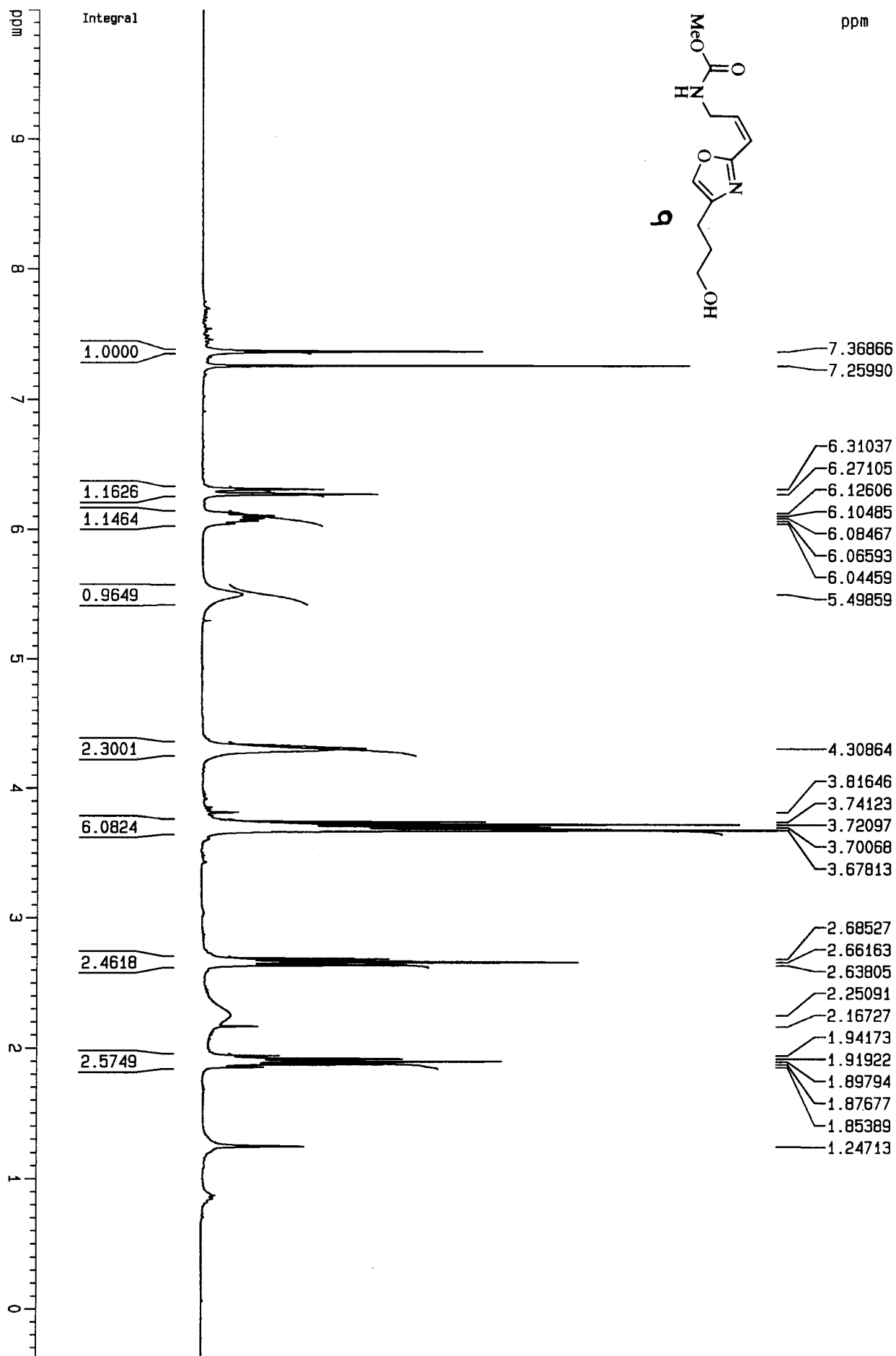


ppm

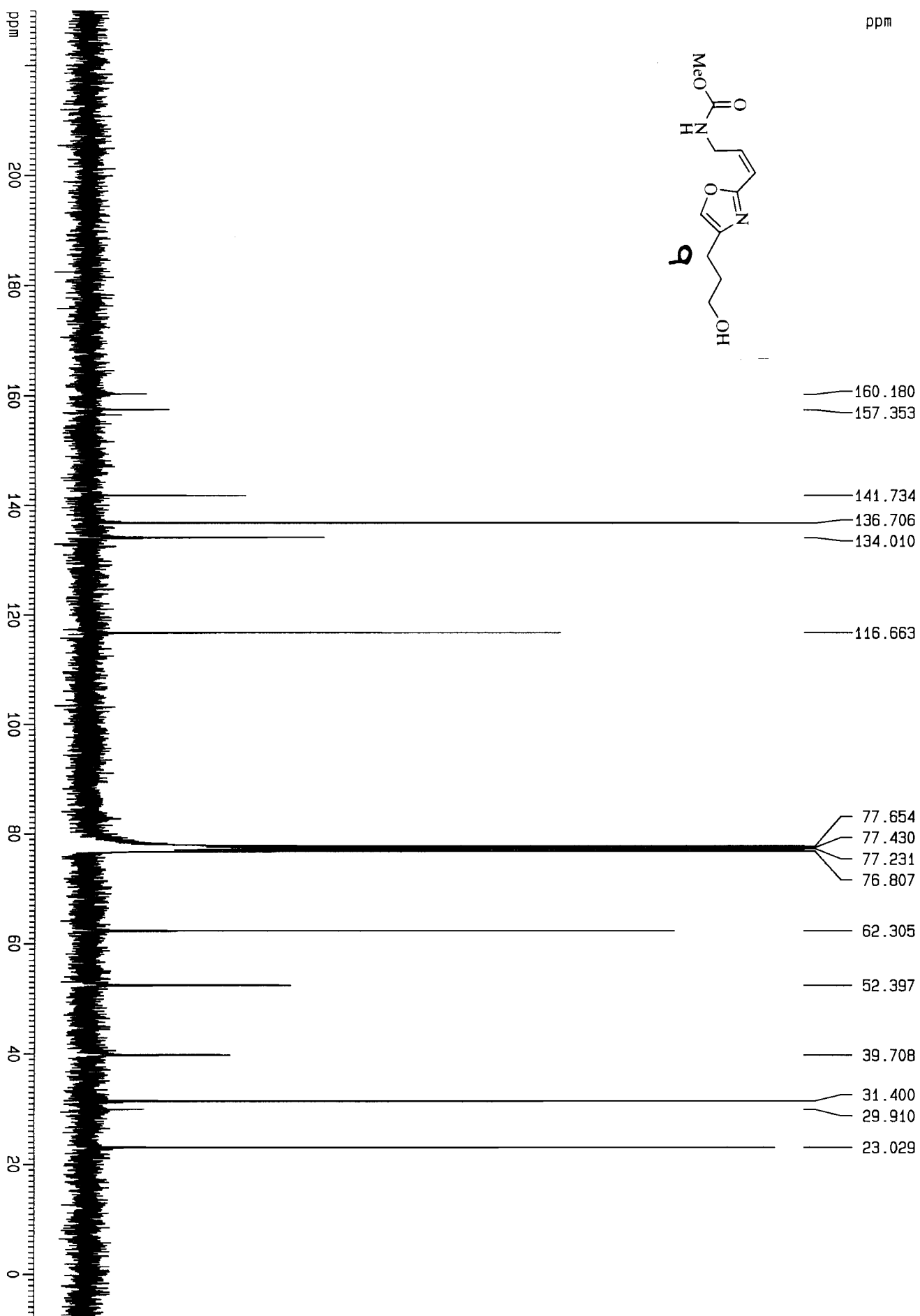
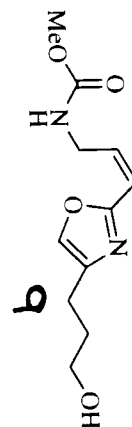


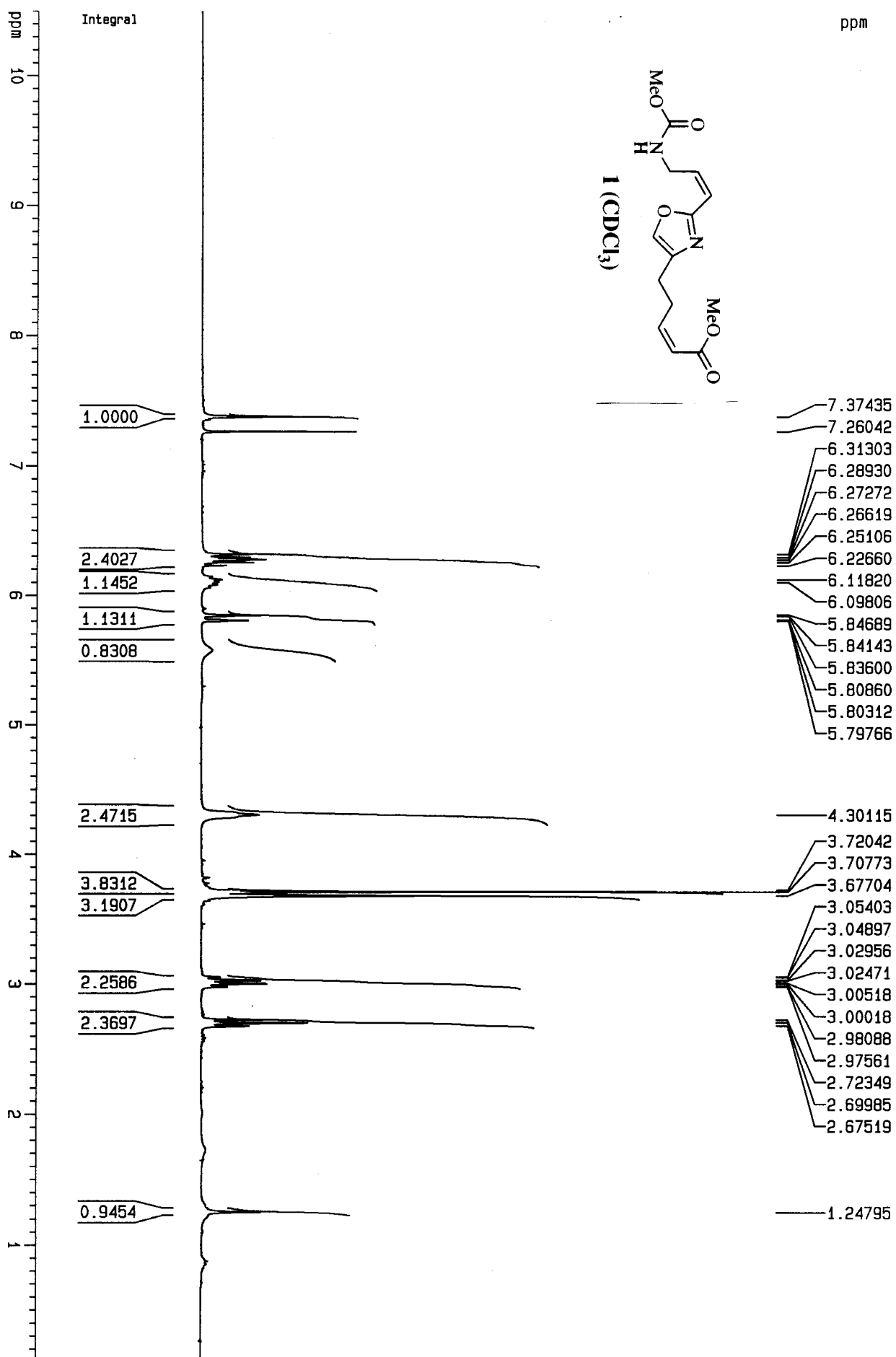
ppm





ppm





ppm

