

Supporting Information

Estimated Effects of Temperature on Secondary Organic Aerosol Concentrations

Paul E. Sheehan, Frank M. Bowman

6 pages

Figure S1. Daily temperature profiles used in model simulations.

Figure S2. Daily concentration profiles for AP and S_1+S_2 in base case simulation. [AP] is gas-phase concentration. $[S_1]+[S_2]$ is the sum of gas- and aerosol-phase concentrations for both compounds.

Figure S3. Daily AP organic aerosol concentrations for three temperature profiles, $T = 25 \pm 0, \pm 5, \pm 10$ °C.

Figure S4. Daily AP organic aerosol concentrations for $H_i = 0, 10, 17.5, 25$ kcal mol⁻¹.

Figure S5. Daily AP organic aerosol concentrations for HYA emissions = 0.5, 1.0, 2.0 times base case simulation levels.

Figure S6. Daily AP organic aerosol concentrations for POA = 0, 10, 20 $\mu\text{g m}^{-3}$.

MAR 02, 2001

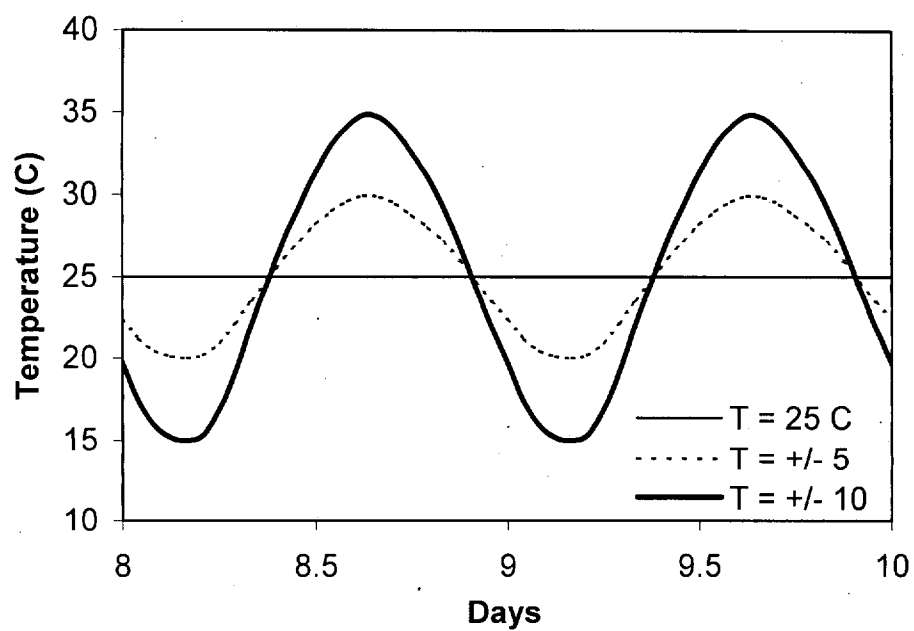


Figure S1. Daily temperature profiles used in model simulations.

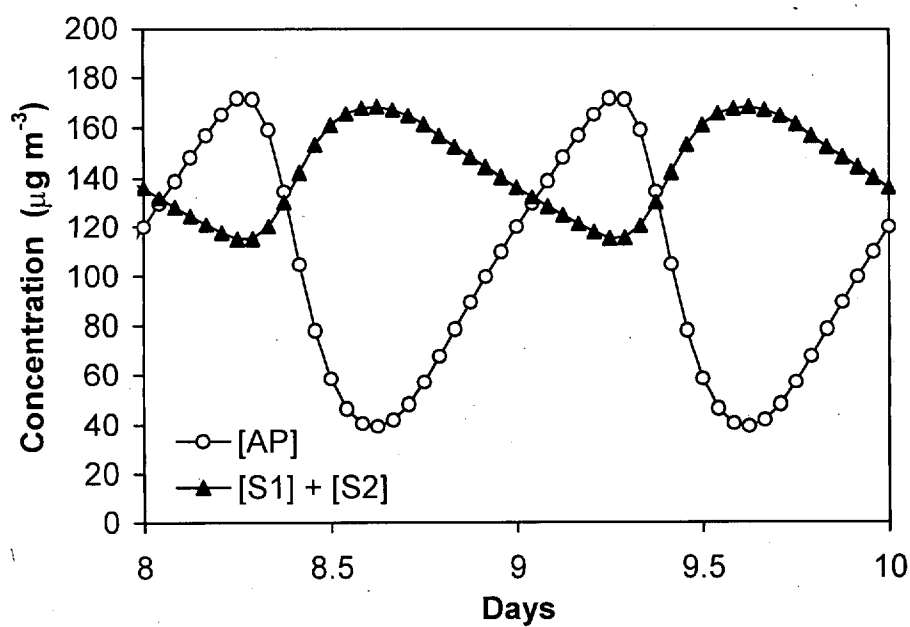


Figure S2. Daily concentration profiles for AP and S_1+S_2 in base case simulation. [AP] is gas-phase concentration. $[S_1]+[S_2]$ is the sum of gas- and aerosol-phase concentrations for both compounds.

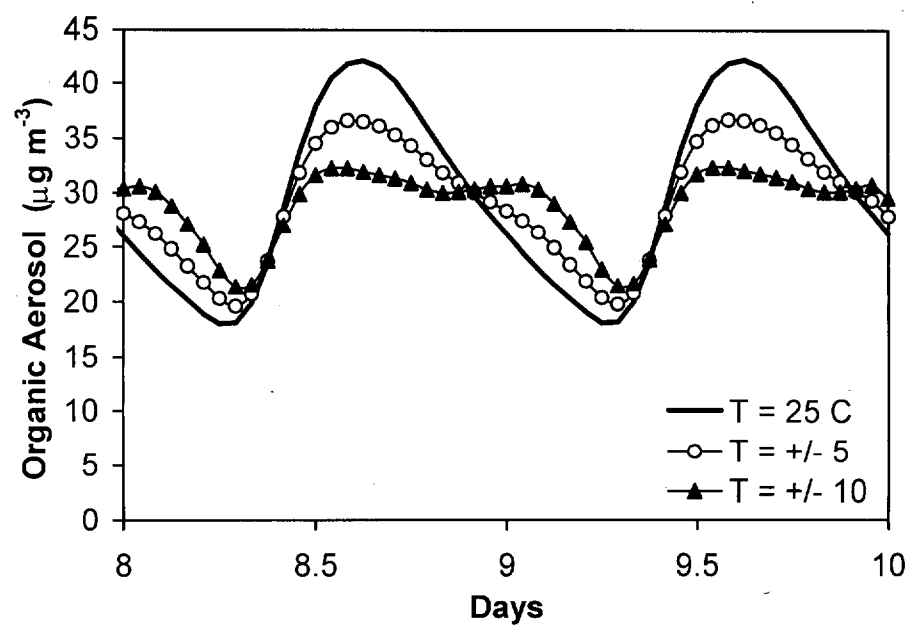


Figure S3. Daily AP organic aerosol concentrations for three temperature profiles, $T = 25 \pm 0, \pm 5, \pm 10\text{ }^{\circ}\text{C}$.

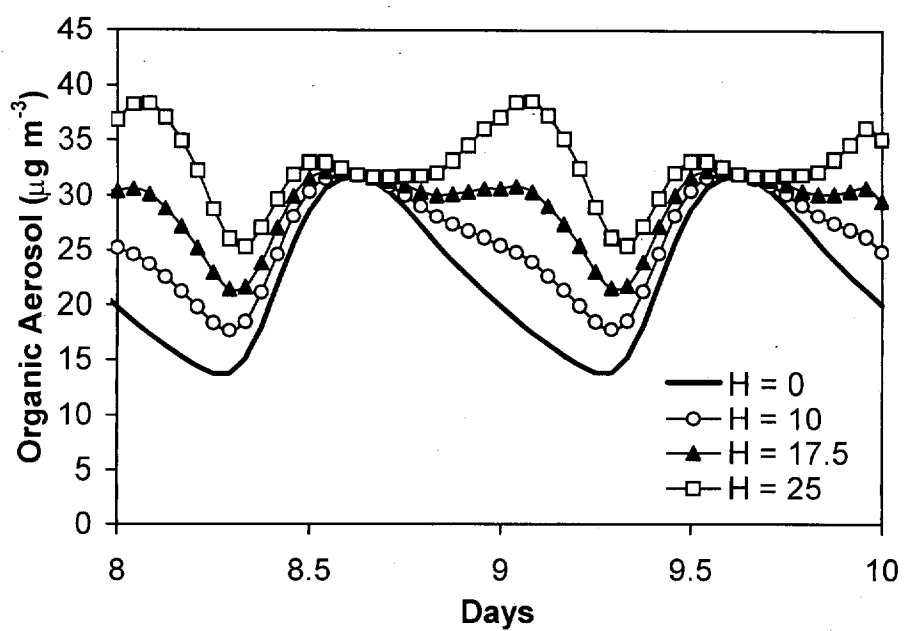


Figure S4. Daily AP organic aerosol concentrations for $H_i = 0, 10, 17.5, 25$ kcal mol^{-1} .

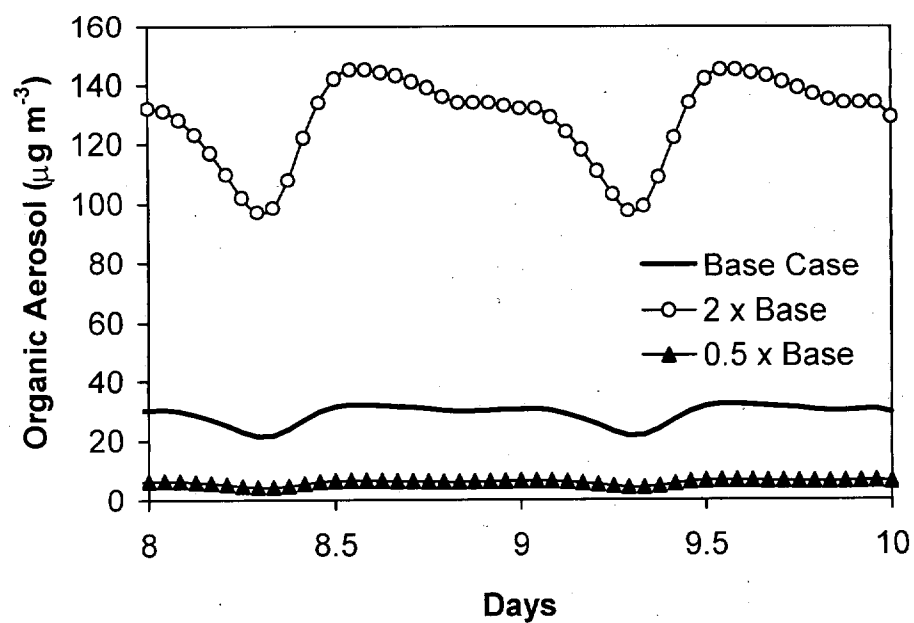


Figure S5. Daily AP organic aerosol concentrations for HYA emissions = 0.5, 1.0, 2.0 times base case simulation levels.

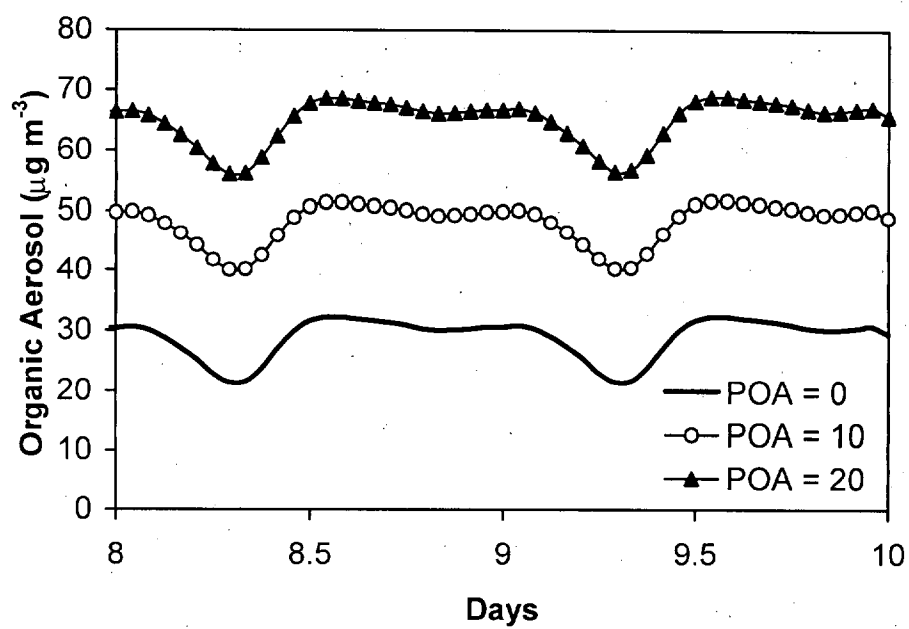


Figure S6. Daily AP organic aerosol concentrations for POA = 0, 10, 20 $\mu\text{g m}^{-3}$.