

Figure 1, Olteanu et al.
(supplemental data)

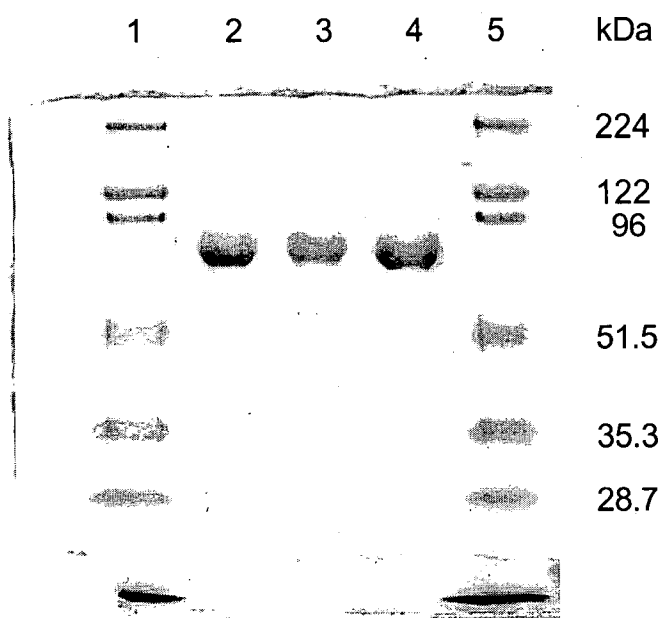


Figure 1 (supplemental data). Comparison of the relative purities of purified MSR polymorphic variants. Lanes 1 and 5, molecular weight marker; lane 2, I22/S175; lane 3, M22/S175; lane 4, I22/L175. An equal amount of protein (7 μ g) was loaded in each lane, separated on a 10% SDS-PAGE gel and detected by Compassion blue staining. Purified MSR migrates with a molecular mass corresponding to 78 kDa.