

Figure S1. Exchange, as a function of time, between $^{13}\text{C}_1$ -OA (Δ , open triangles) and $^{13}\text{C}_1$ -PA (\blacktriangledown , solid black triangles), bound to BLGB, with the corresponding natural abundance FA from the incubation medium.

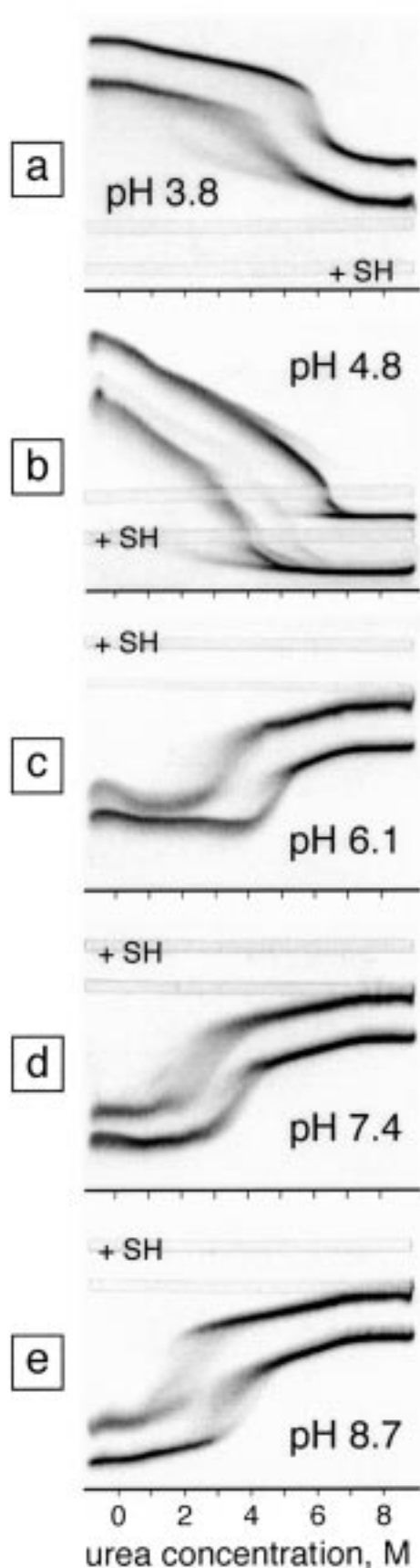


Figure S2. Urea-DGGE of natural BLGB in buffers of increasing pH: 3.8 in panel a, 4.8 in panel b, 6.1 in panel c, 7.4 in panel d and 8.7 in panel e. Sample both reduced (from lanes +SH) and unreduced; varying anode-to-cathode sequence of $\pm SH$ to avoid $-SH$ sample migration through $+SH$ trenches. All runs across transverse 0-8 M urea gradients.

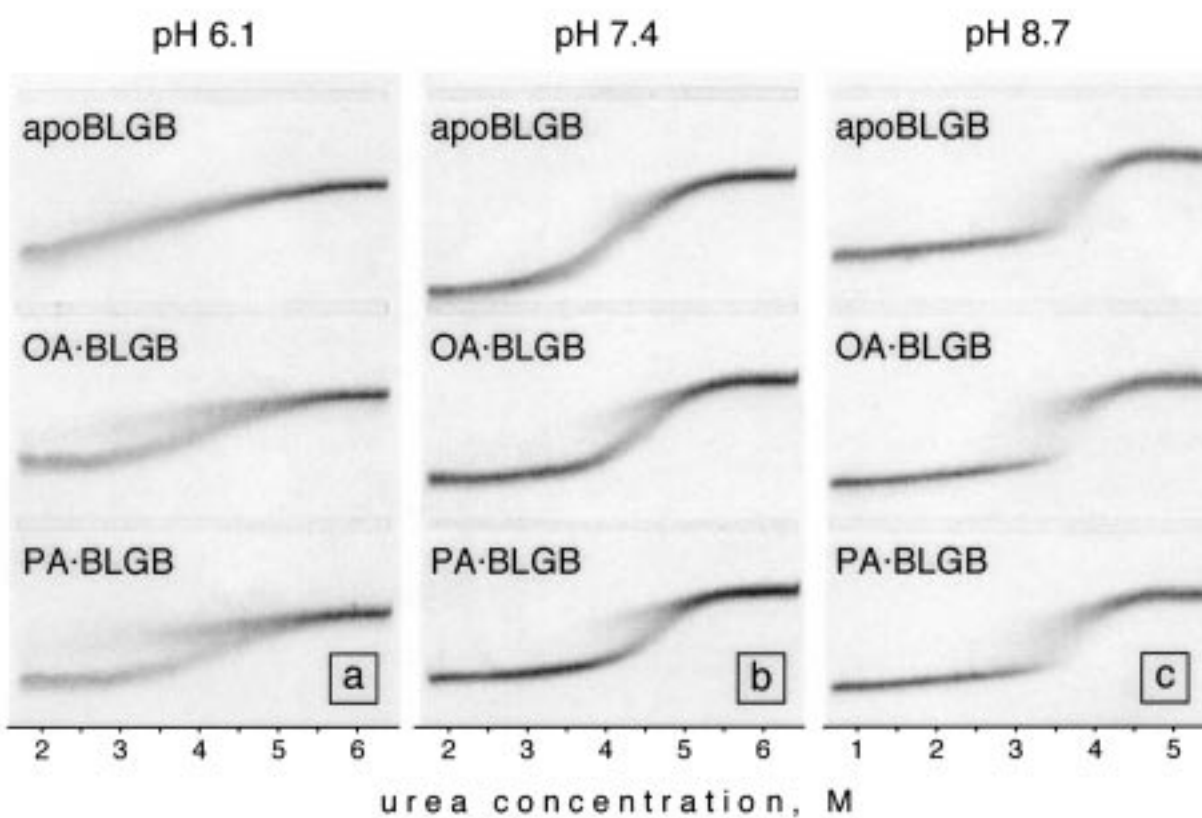


Figure S3. Urea-DGGE of apoBLGB, OA-BLGB and PA-BLGB: a) at pH 6.1 (2-6 M urea), b) at pH 7.4 (2-6 M urea); c) at pH 8.7 (1-5 M urea).

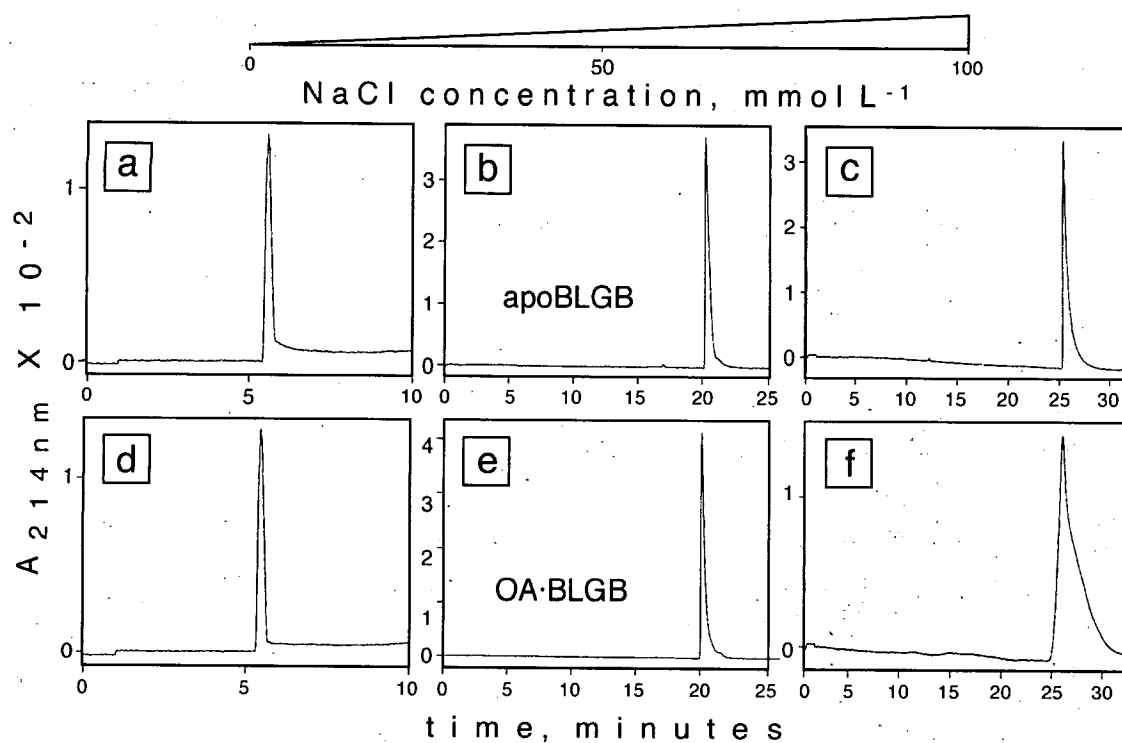


Figure S4. HPCZE patterns at pH 5.6 of apoBLGB (a-c) and of its complex with oleic acid (d-f), in the absence of chloride ions (a, d) as well as in the presence of 50 (b, e) and 100 mM (c, f) NaCl.