

Supporting Information

Three-dimensional Branched TiO₂ Architectures in Controllable Bloom for Advanced Lithium-ion Batteries

Shaofu Wang,^{†,‡,⊥} Dandan Qu,^{†,‡,⊥} Yun Jiang,[‡] Wan-Sheng Xiong,[†] Hong-Qian Sang,[†] Rong-Xiang He,[†] Qidong Tai,[†] Bolei Chen,[†] Yumin Liu,^{,†} and Xing-Zhong Zhao^{*,†,§}*

[†] Institute for Interdisciplinary Research, Jiangnan University, Wuhan 430056, China.

[‡] Key Laboratory of Optoelectronic Chemical Materials and Devices, Ministry of Education, Jiangnan University, Wuhan 430056, China.

[§] School of Physics and Technology, Key Laboratory of Artificial Micro/Nano Structures, Ministry of Education, Wuhan University, Wuhan 430072, China.

[⊥]These authors contributed equally.

Corresponding Author

*Email: ymliu@jhun.edu.cn

*Email: xzzhao@whu.edu.cn

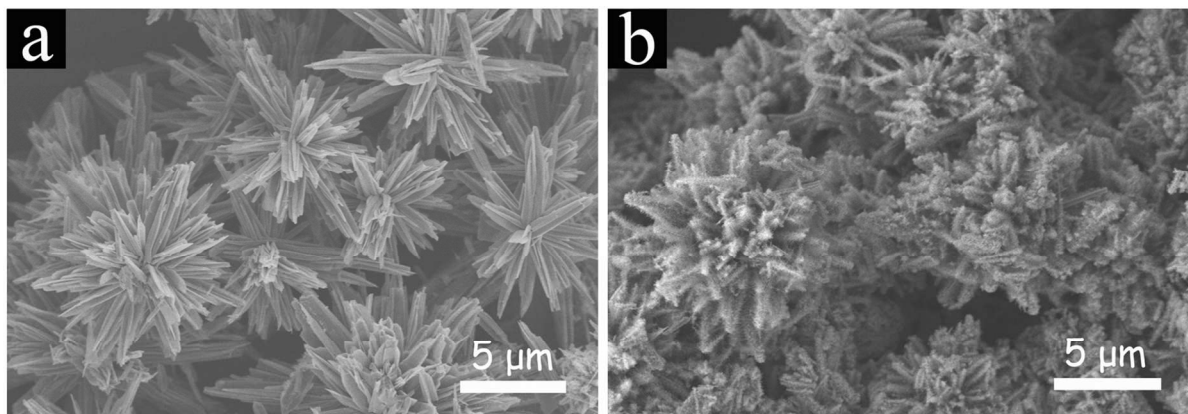


Figure S1. FE-SEM images with low magnification for (a) BTA-3 and (b) BTA-4 samples.

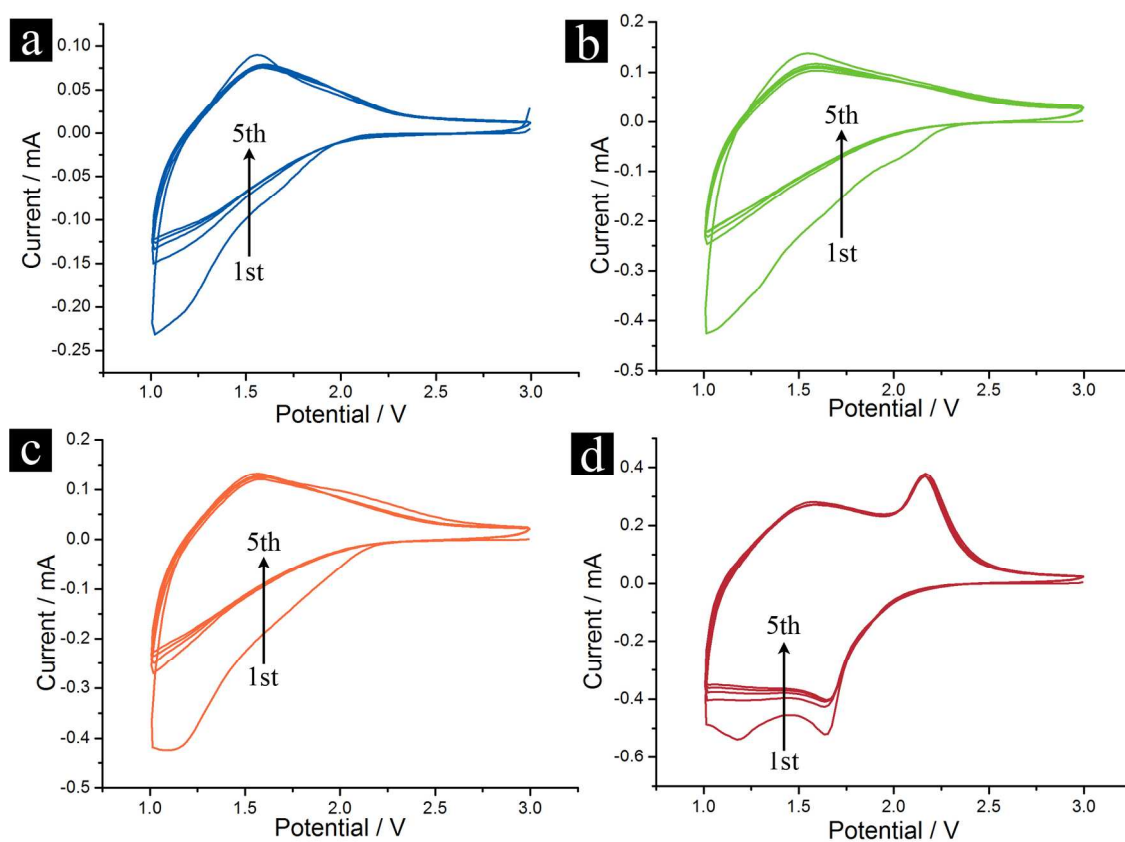


Figure S2. Cyclic voltammograms of (a) BTA-1, (b) BTA-2, (c) BTA-3, and (d) BTA-4 for the first five cycles between 1.0 and 3.0 V at a scan rate of 1 mV s^{-1} .

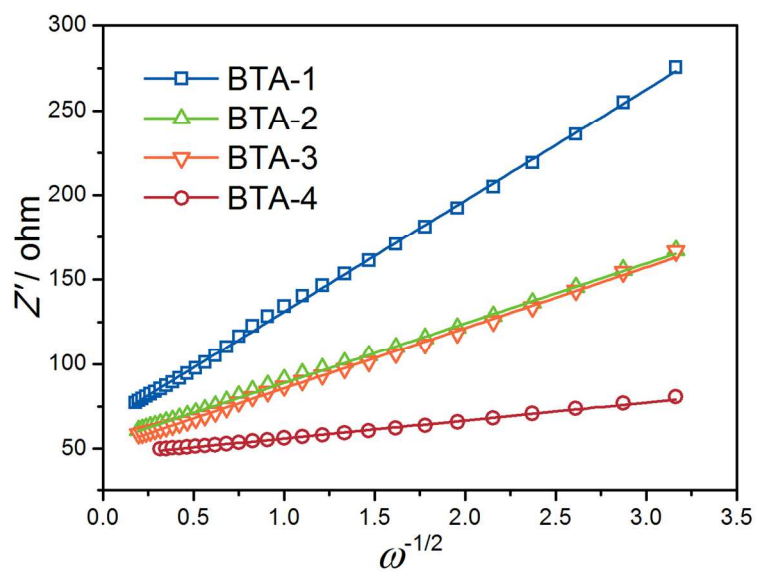


Figure S3. The linear fitting of Z' vs. $\omega^{-1/2}$ plots for different BTA anodes.