

Supporting Information

For

Stable and Reusable Electrochemical  
Biosensor for Poly(ADP-ribose) Polymerase  
and Its Inhibitor Based on Enzyme-Initiated  
Auto-PARylation

*Yuanyuan Xu,<sup>†</sup> Li Liu,<sup>‡</sup> Zhaoyin Wang<sup>\*,‡</sup> and Zhihui Dai<sup>\*,‡</sup>*

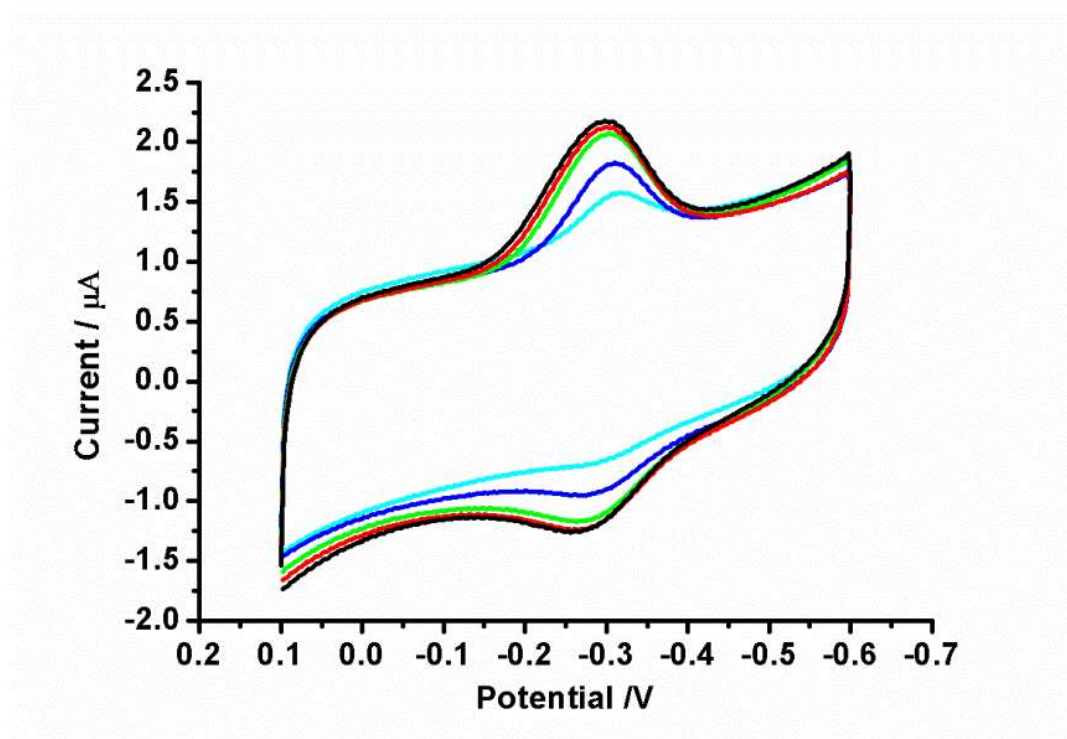
<sup>†</sup>Key Laboratory of Animal Physiology and Biochemistry, College of Veterinary  
Medicine, Nanjing Agricultural University, Nanjing 210095, China.

<sup>‡</sup>Jiangsu Key Laboratory of Biofunctional Materials, School of Chemistry and  
Materials Science, Nanjing Normal University, Nanjing, 210023, P. R. China

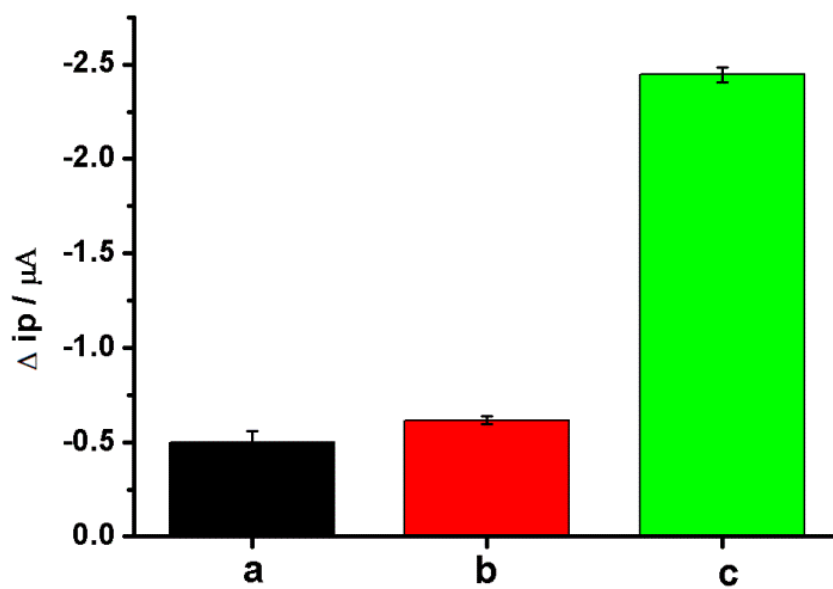
---

\*Corresponding authors.

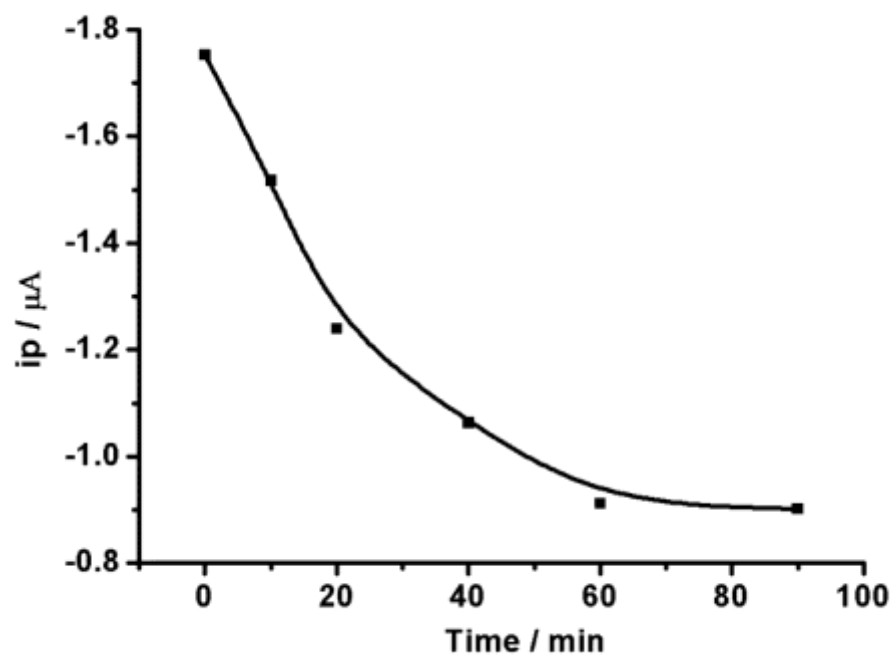
*E-mail addresses:* daizhihuii@njnu.edu.cn (Z. D.), inzo@163.com (Z. W.)



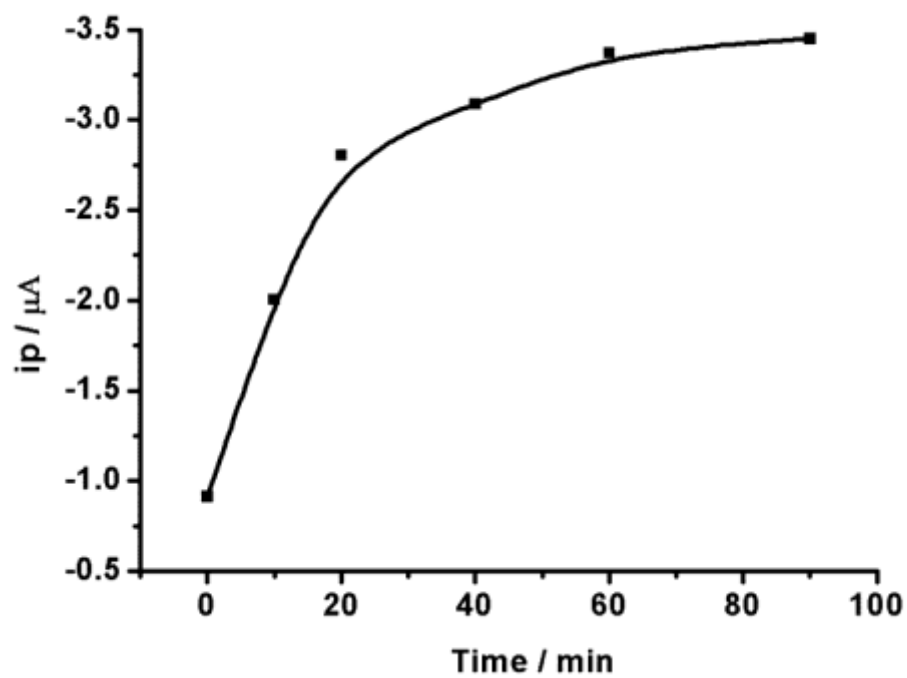
**Figure S1** Cyclic voltammograms corresponding to the analysis of different concentrations of RuHex (concentration: 1, 3, 5, 7, and 10  $\mu\text{M}$ ).



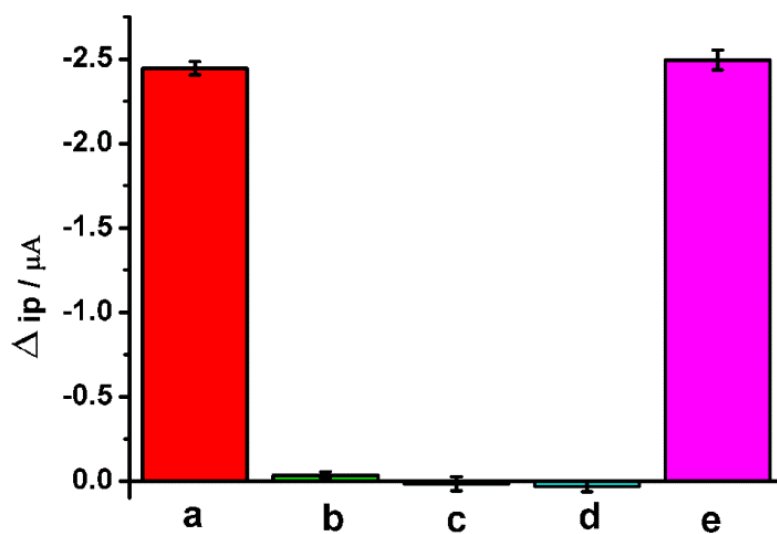
**Figure S2** Histograms of peak values obtained by SWV corresponding to (a) 2  $\mu M$ , (b) 1  $\mu M$ , (c) 0.2  $\mu M$  c-kit-1.



**Figure S3** Calibration curve of SWV peak values corresponding to different incubation time of 1 U PARP.



**Figure S4** Calibration curve of SWV peak values corresponding to different incubation time of 500  $\mu\text{M}$  NAD.



**Figure S5** Experiments for the selectivity of the biosensor. Histograms of peak values corresponding to (a) 2 U PARP, (b) BSA, (c) 2 U heat deactivated-PARP, (d) R-buffer, (e) 2 U PARP in diluted serum samples.