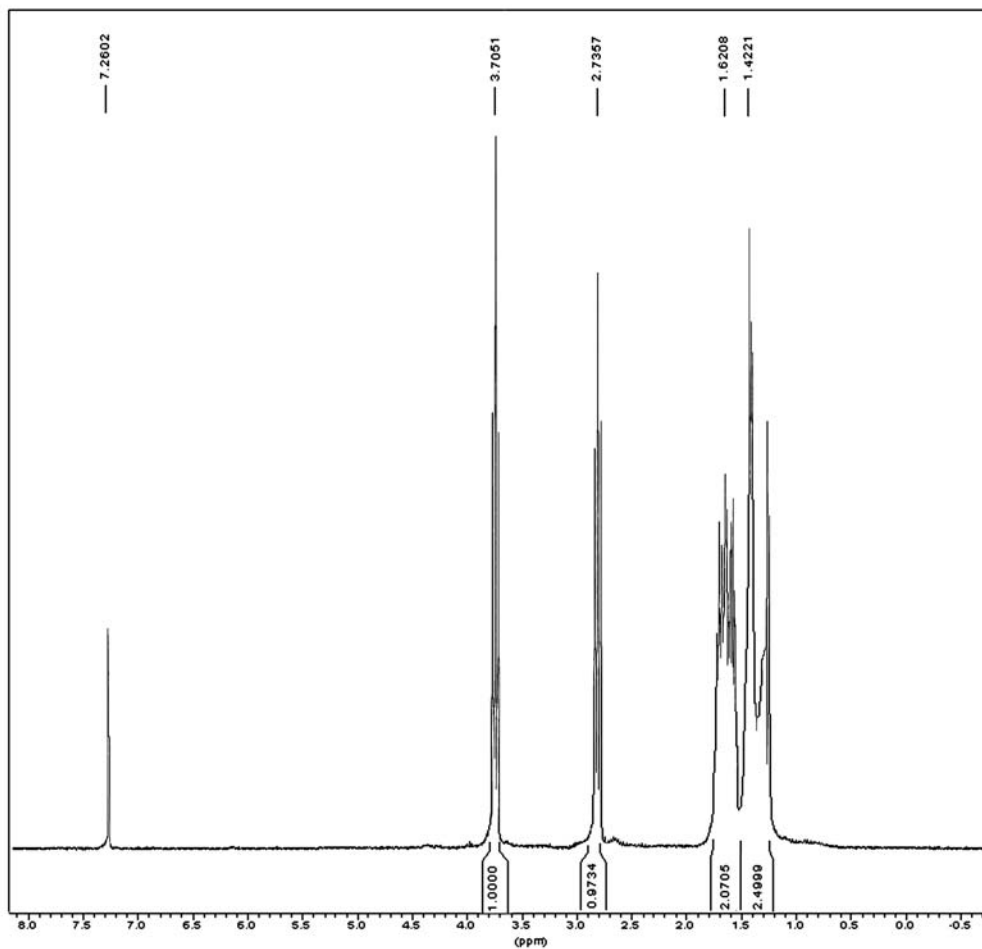


Supplementary Material

1. The proton NMR spectrum for the disulfide derivative of MCH.

¹H normal range AV300

after I2 in CDCl₃



*** Current Data Parameters ***

NAME : jl27zhan
EXPNO : 2
PROCNO : 1

*** Acquisition Parameters ***

BF1 : 300.1300000 MHz
DATE_d : Jul 26 2006
NS : 8
NUCLEUS : off
PULPROG : zg30
SFO1 : 300.1318534 MHz
SOLVENT : CDCl₃
SW : 17.9519 ppm
TD : 32768
TE : 300.0 K

*** Processing Parameters ***

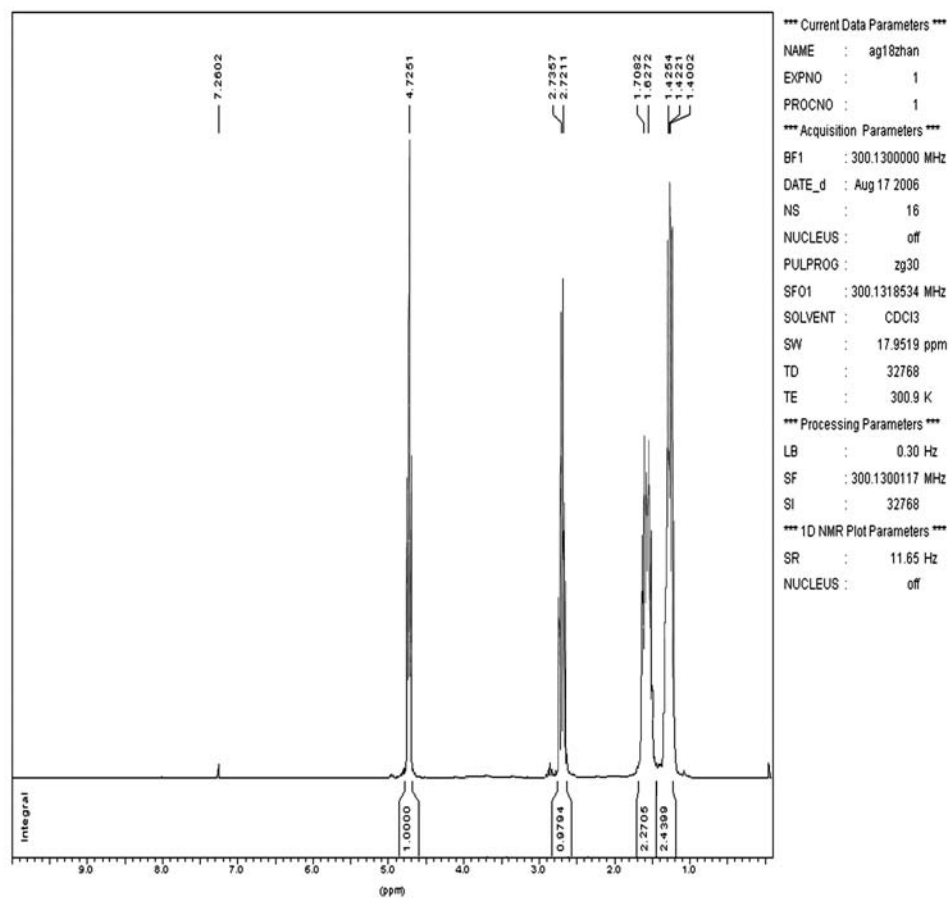
LB : 0.30 Hz
SF : 300.1300116 MHz
SI : 32768

*** 1D NMR Plot Parameters ***

SR : 11.64 Hz
NUCLEUS : off

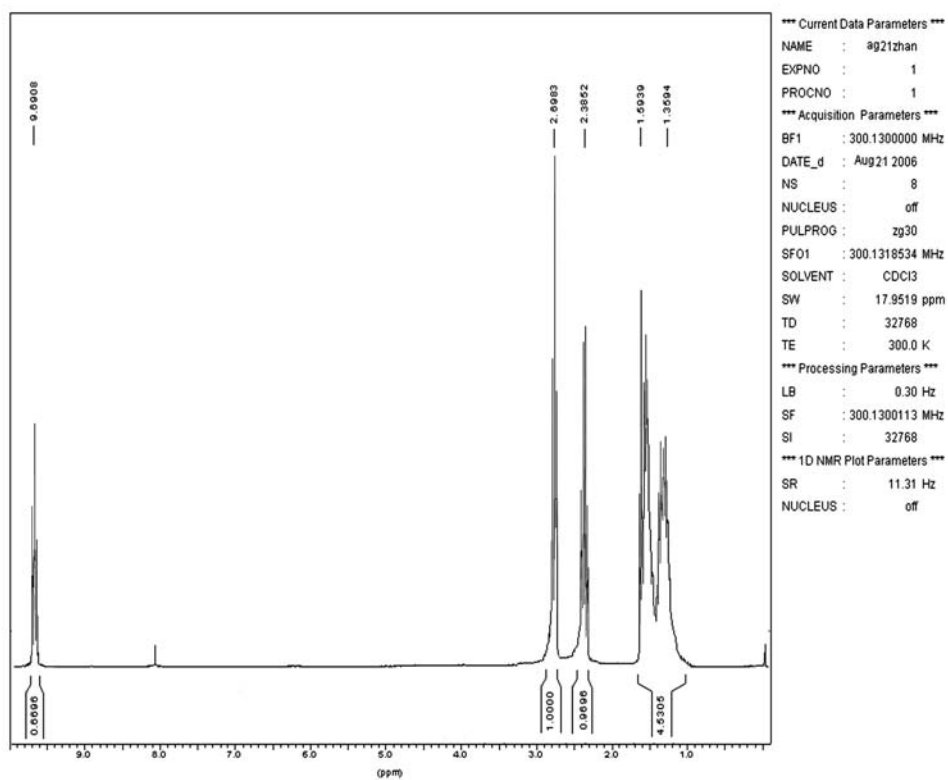
2. The disulfide derivative of MCH containing the ONO group

¹H normal range AC300



3. The disulfide derivative of MCH containing the CHO group

¹H normal range AV300



4. The disulfide derivative of MCH containing the NCS group

¹H normal range AV300

