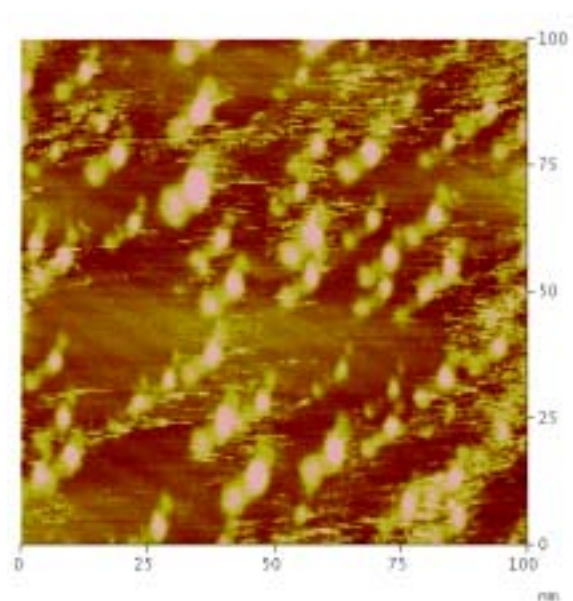


## Supporting information

Although the citrate adlayer at the potential negative to the peak at 0.8 V showed a well-ordered structure, clusters of citrates could be seen and the ordered adlayer disappeared when the potential went to 0.8 V or more positive. The figure below is a typical STM image showing the clusters. The clusters may be due to the reorientation of citrate.



**Figure 1.** A typical STM image of citrate adsorbed on Au (111)

in 0.1 M  $\text{HClO}_4$  solution acquired at 0.8V.