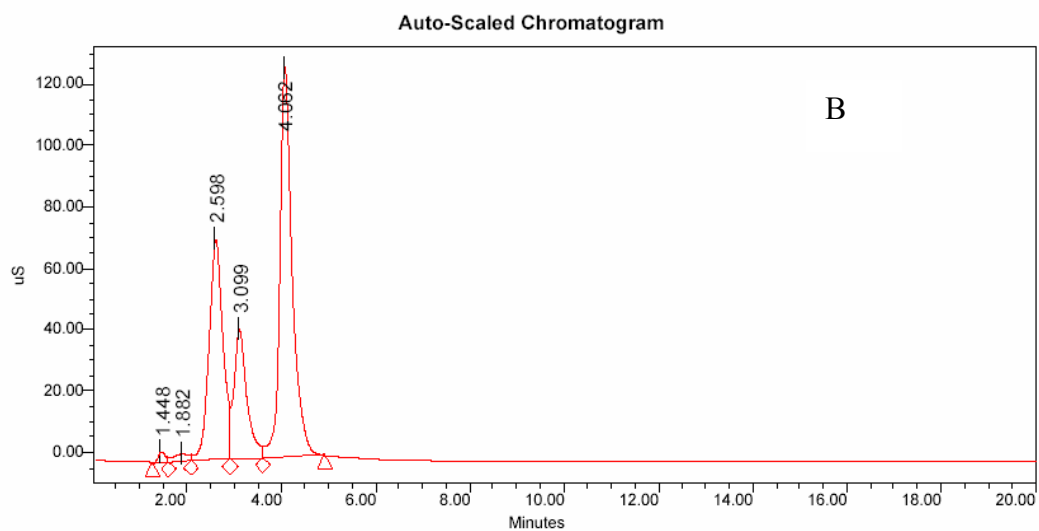
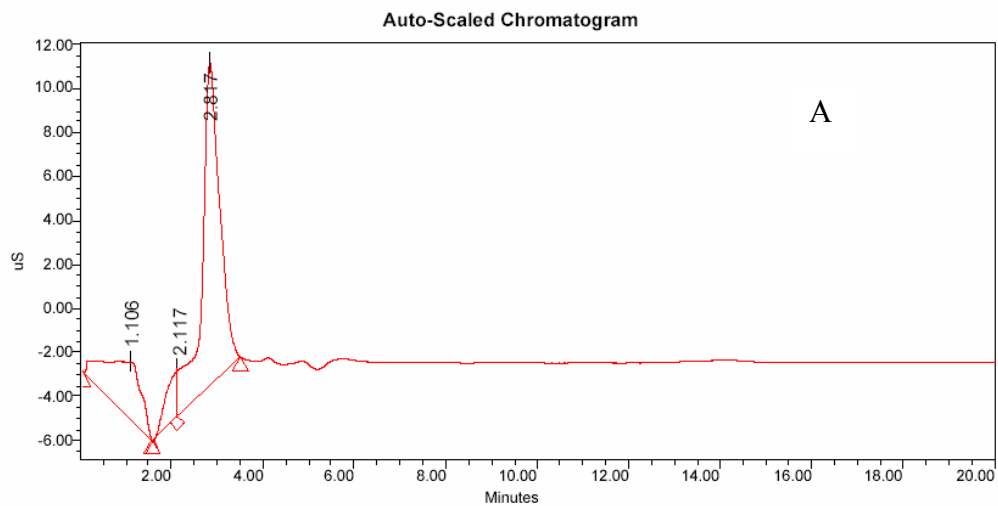


Electronic Supporting Information



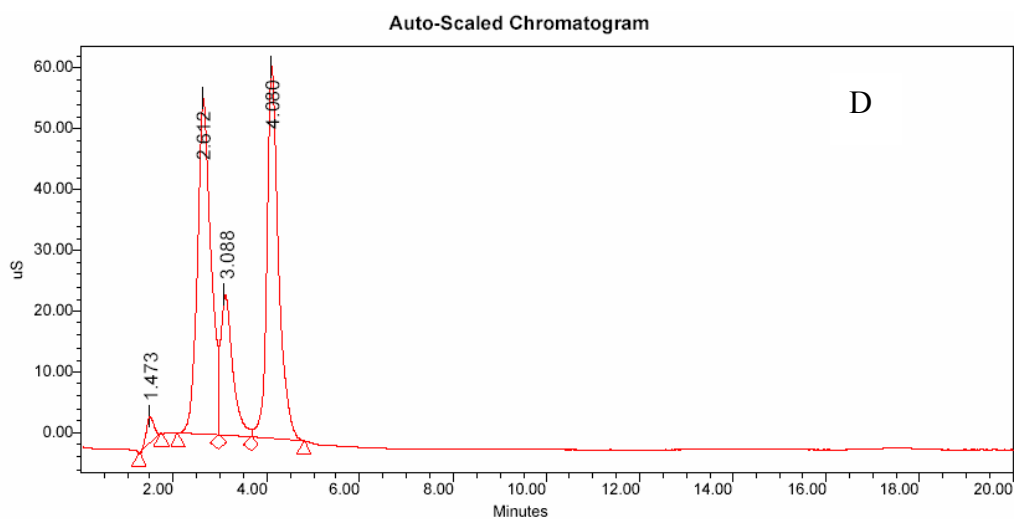
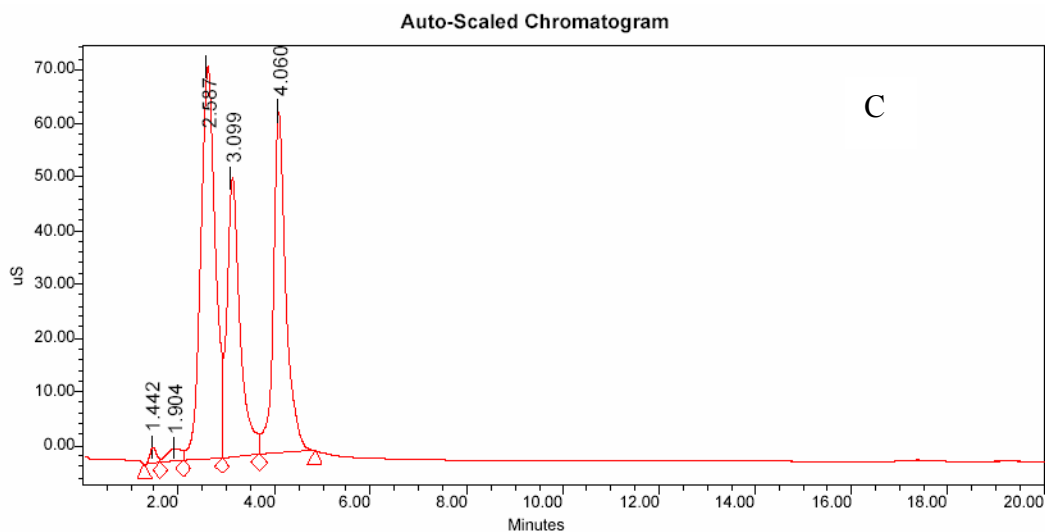


Fig S1. Ion chromatograms of (A) standard solution of sodium acetate (100ppm); (B) ruthenium organosol in ethylene glycol; (C) platinum organosol in ethylene glycol; (D) mixture of standard solution of sodium acetate and platinum organosol in ethylene glycol, The three major peaks in (B), (C) and (D) from the left to the right correspond to acetate, ethylene glycol, and chloride respectively (after comparison with the respective standard samples).