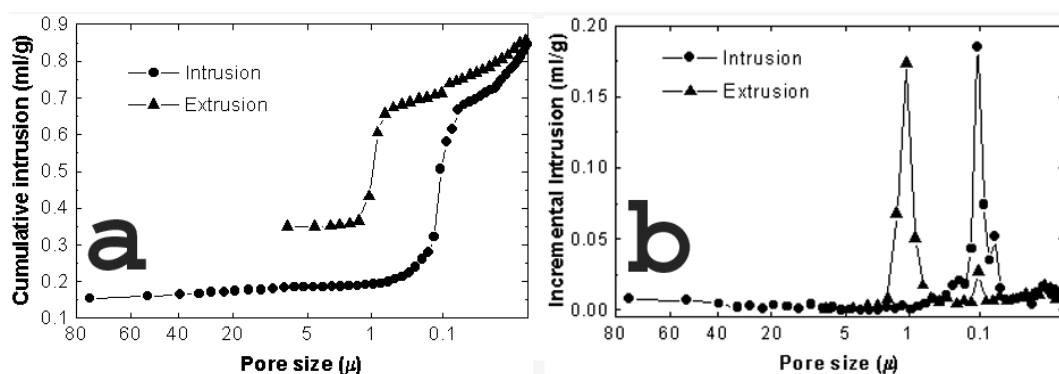
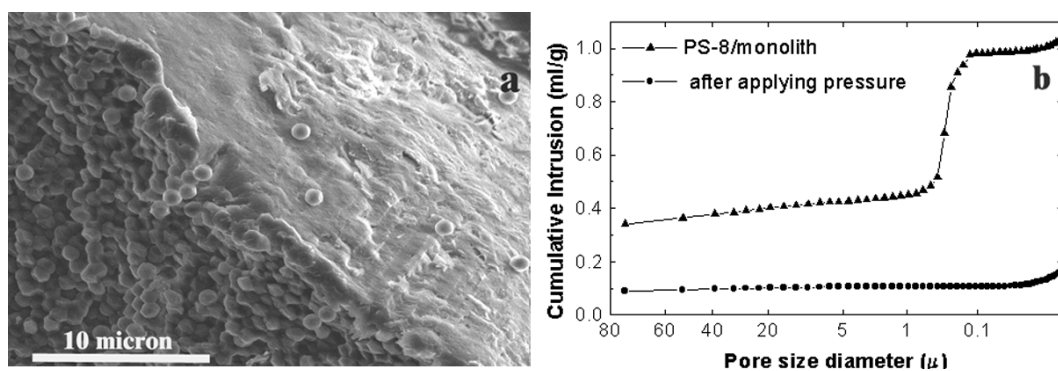


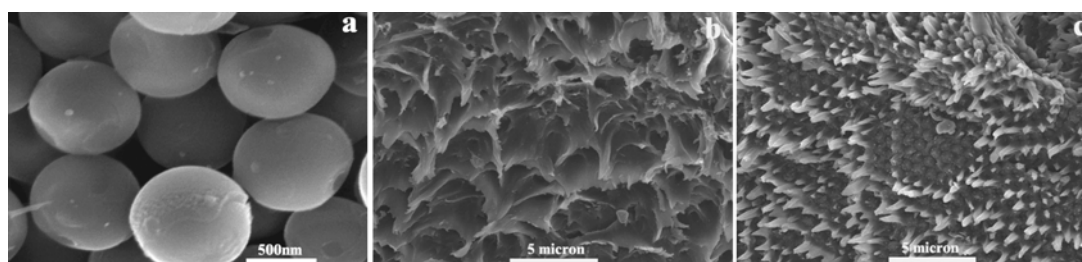
## Supplementary part:



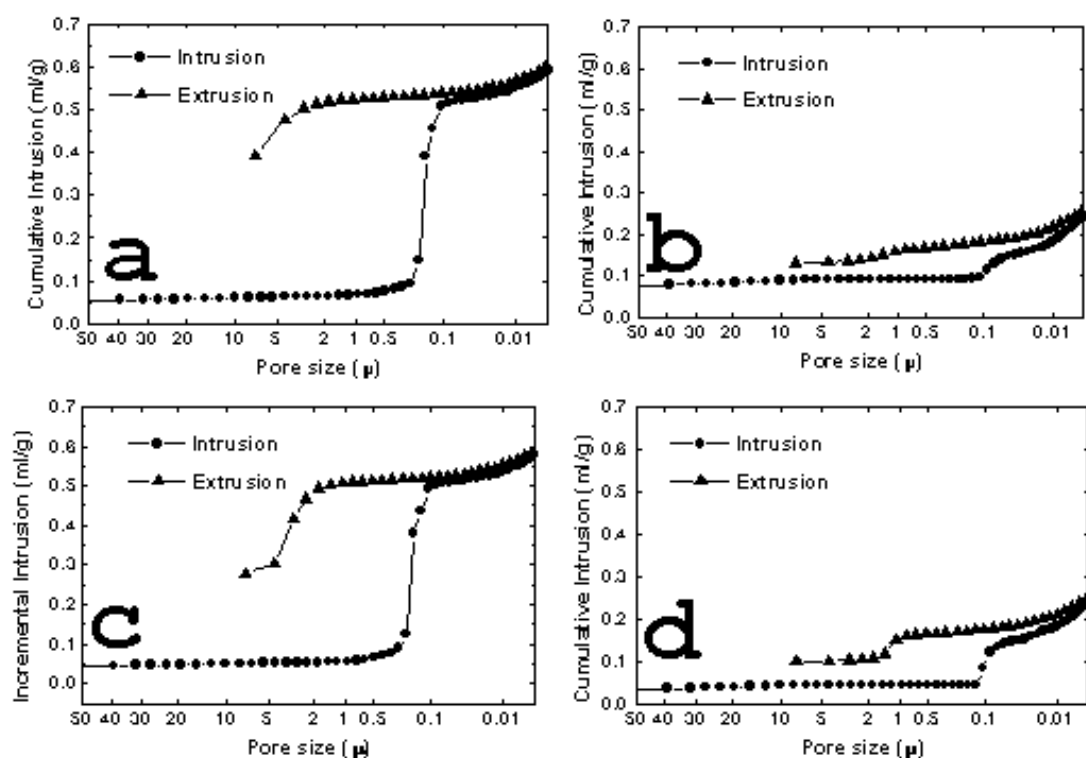
Hg porosimetry data of PS-3/monolith. a: Cumulative intrusion, b: Incremental intrusion.



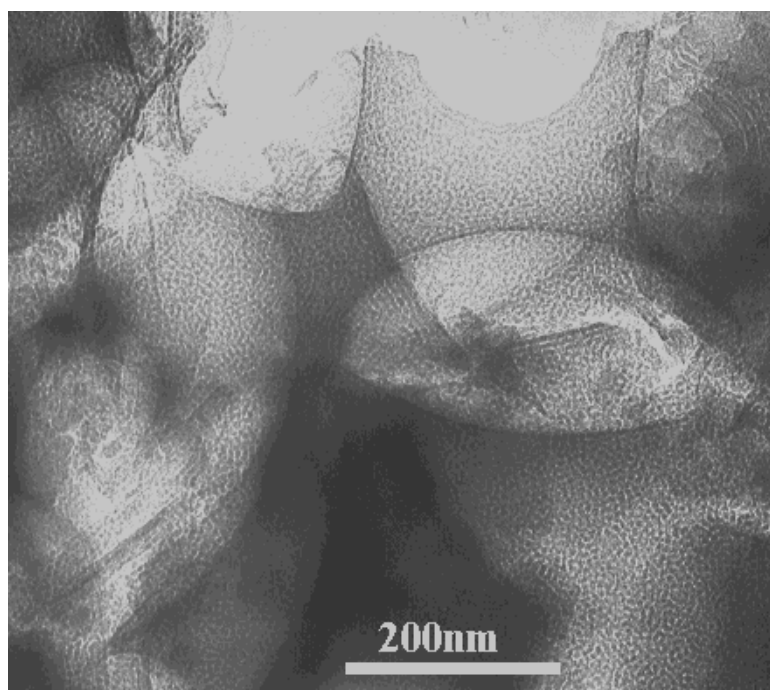
SEM micrograph after applying pressure of 23000psi (a) and Hg intrusion before and after the application of pressure (b) of polystyrene monolith (PS-B8).



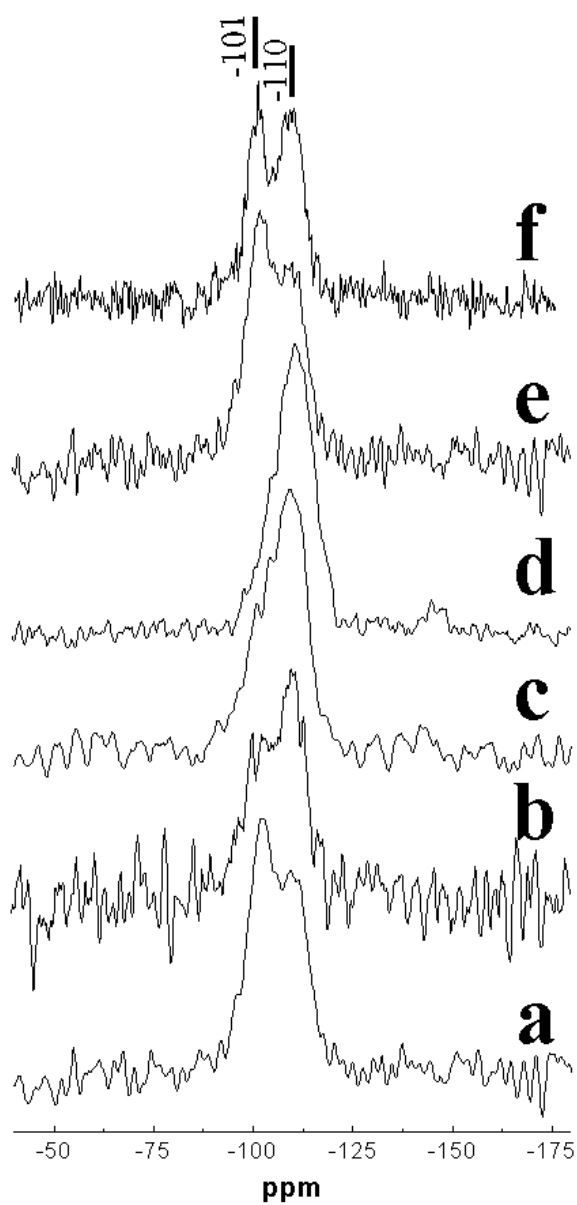
SEM micrographs of monolith PS-4 dried (a), acid (b) and base (c) treated at 100<sup>0</sup>C followed by filtration and dried at 100<sup>0</sup>C.



Cumulative intrusion of Hg in acid (a & b) and base treated (c & d) polystyrene monoliths PS-4 (c & d). Left: Dried at 60<sup>0</sup>C and Right: Dried at 100<sup>0</sup>C.



TEM image of 4B/calcined



$^{29}\text{Si}$  MAS NMR spectra of 3B: (a) uncalcined, (b) calcined at  $200^{\circ}\text{C}$ , (c) calcined at  $300^{\circ}\text{C}$ , (d) calcined at  $550^{\circ}\text{C}$ , (e) toluene extracted/dried and (f) toluene extracted and calcined.