

Resonance Tunneling Diode Structures on CdTe Nanowires Made by Conductive AFM

Susheng Tan¹, Zhiyong Tang², Xiaorong Liang^{# 1}, Nicholas A. Kotov^{2,3}*

¹ Department of Chemistry, Oklahoma State University, Stillwater OK 74078

² Department of Chemical Engineering, University of Michigan, Ann Arbor, MI 48109-2136

³ Department of Materials Science and Department of Biomedical Engineering, Ann Arbor, MI 48109-2136;

[#] Current address: Department of Chemistry, Purdue University, West Lafayette, IN 47907

Supporting materials

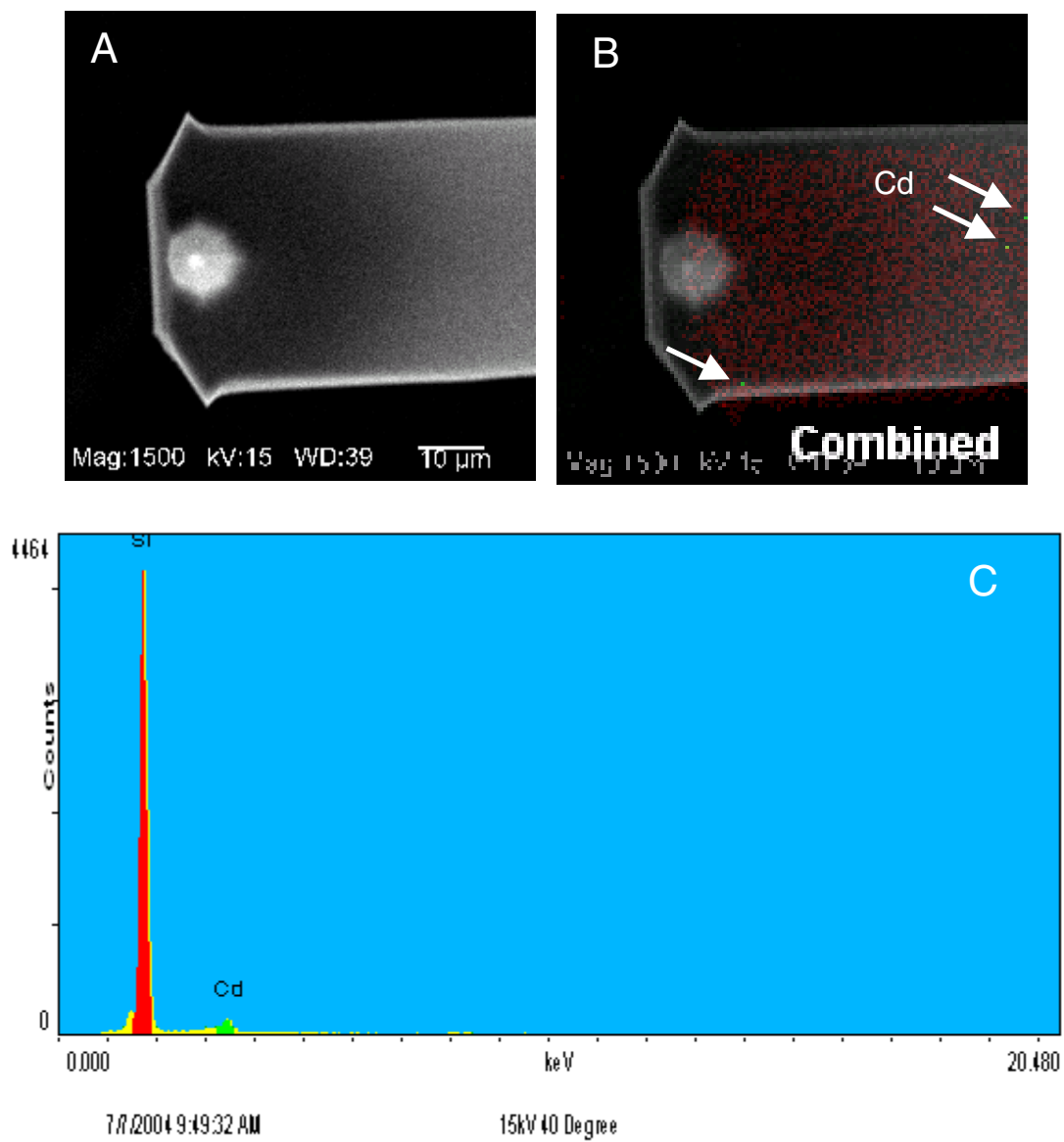


Figure S1. (A). SEM image; (B). Combined Si (red dots) and Cd (green dots) mapping image; and (C). Spectrum of a cantilever used for lithography on CdTe NWs.