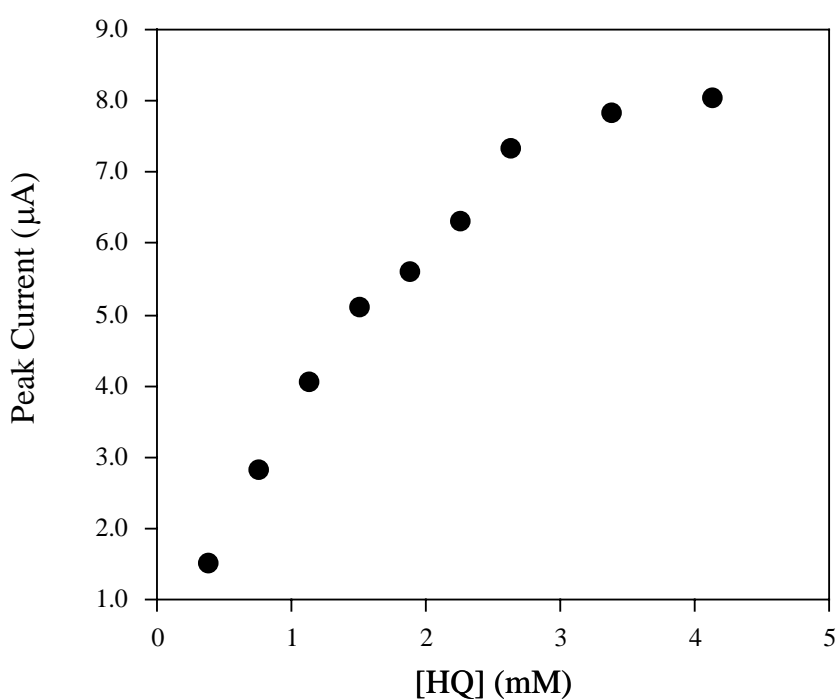


Supporting Information:

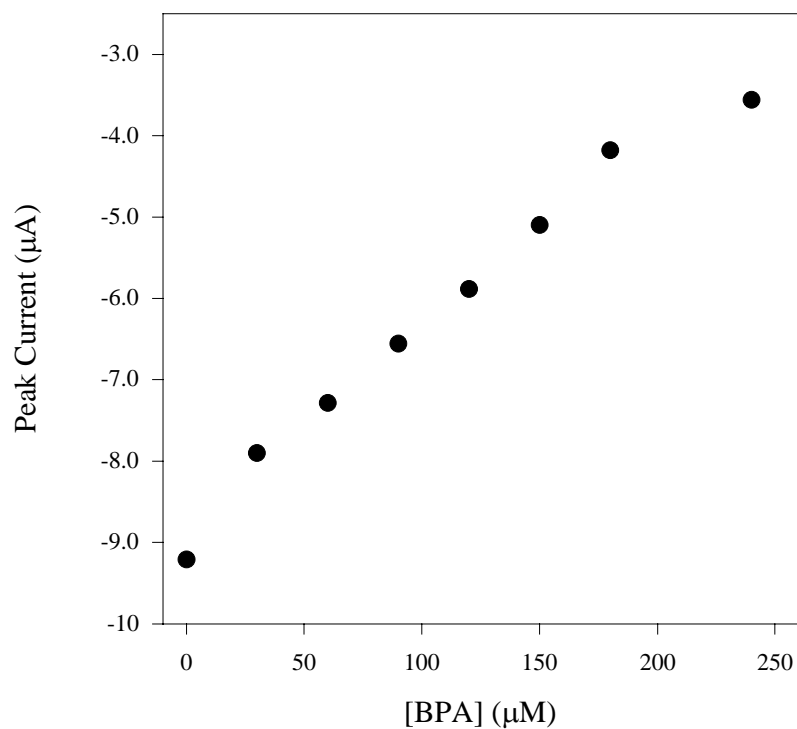
Orientational Effect of Surface-Confined Cyclodextrin on the Inclusion of Bisphenols.

Hiroshi Endo, Tadashi Nakaji-Hirabayashi, Shinta Morokoshi, Makoto Gemmei-Ide and Hiromi Kitano

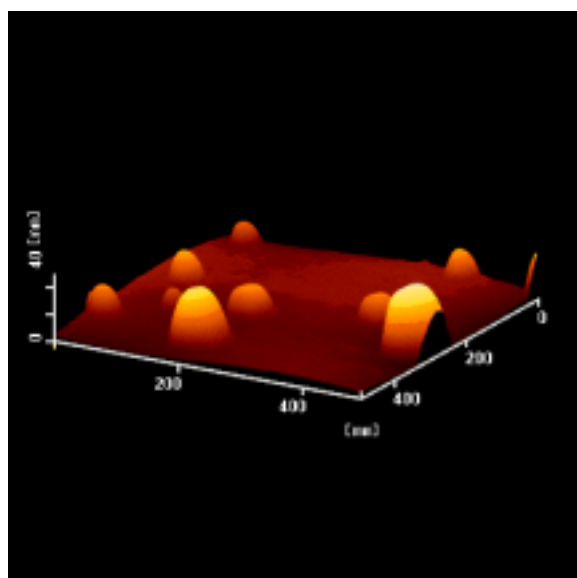
Department of Chemical and Biochemical Engineering, Toyama University, Toyama 930-8555, Japan



Supplement Figure 1. The dependence of anodic peak current on the concentration of HQ for the DTUA- β -CD-modified electrode dipped in 0.1 M Na_2SO_4 at 25 °C. Scan rate = 100 mV/s.



Supplement Figure 2. The dependence of cathodic peak current of 3.0 mM HQ on the concentration of added BPA for the DTUA- β -CD-modified electrode immersed in 10 mM phosphate buffer (pH 7.0) containing 10 (v/v) % MeOH at 25 °C. Scan rate = 100 mV/s.



Supplement Figure 3. AFM image of colloidal gold on the amine-terminated glass surface

