

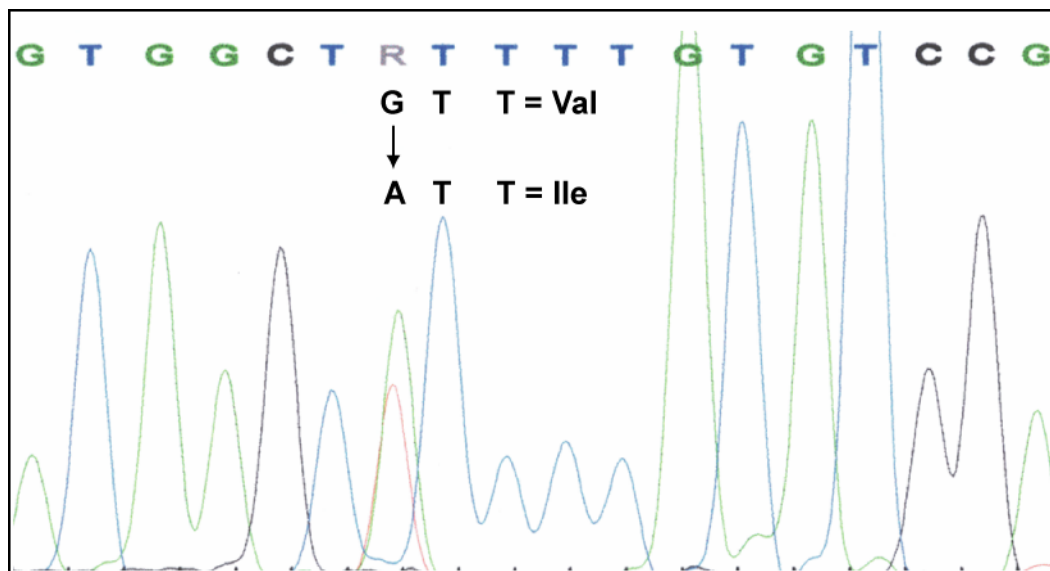
## Supplemental Information

Figure S1. A point mutation (g.49966G>A) in the coding region of the *PSEN1* gene causes an amino acid change at codon 261 (V261I).

Figure S2. MALDI-TOF-MS of the soluble fraction (S<sub>200</sub>), isolated from frontal cortex of the V261I case (A) and a sAD control (B). Samples were analyzed after immunoprecipitation with a mixture of 4G8 and 6E10. f indicates formylated species (+28 units of mass).

Figure S3. MALDI-TOF-MS of the P<sub>50</sub> fraction, isolated from leptomeningeal vessels of the V261I case (A, B) and a sAD control (C). Samples were analyzed before (A) and after immunoprecipitation with anti-A $\beta$ N-40 (B) or a mixture of 4G8 and 6E10 (C). f indicates formylated species (+28 units of mass). A synthetic peptide of an average mass of 2752.3 was used as standard (St).

**Figure S1**



**Figure S2**

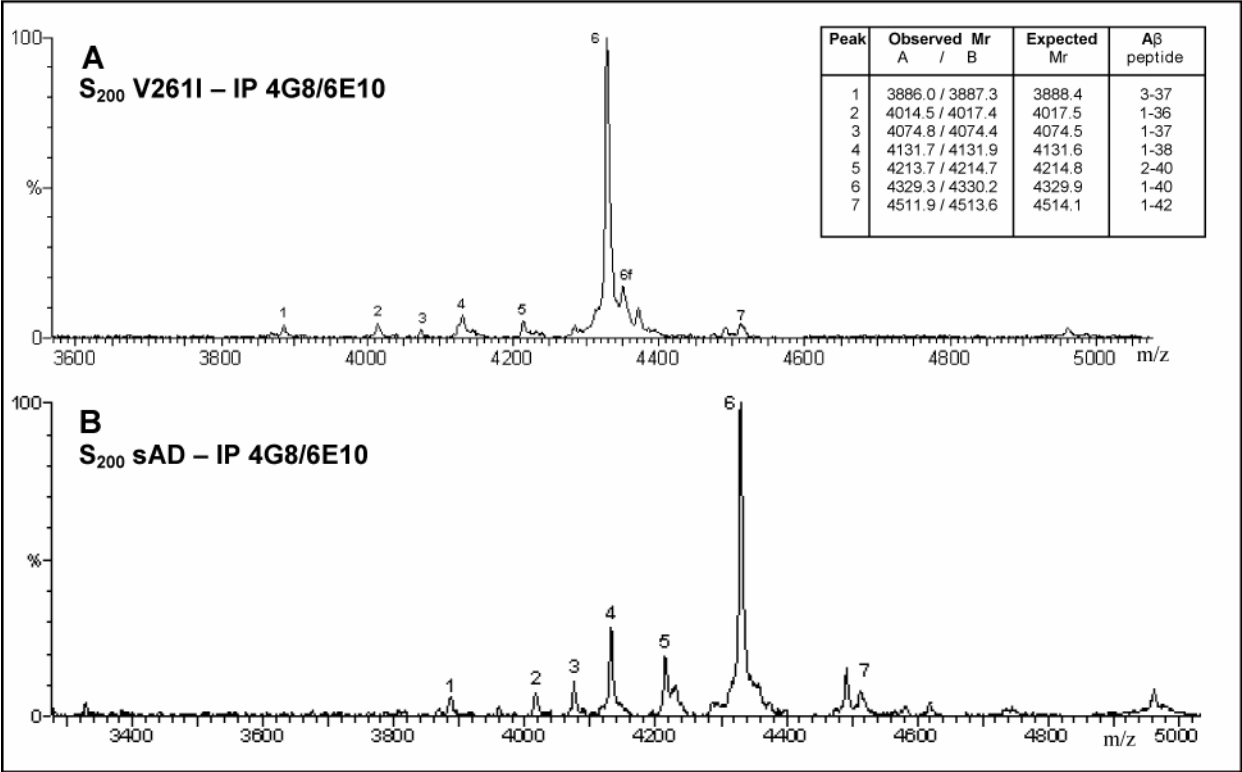


Figure S3

