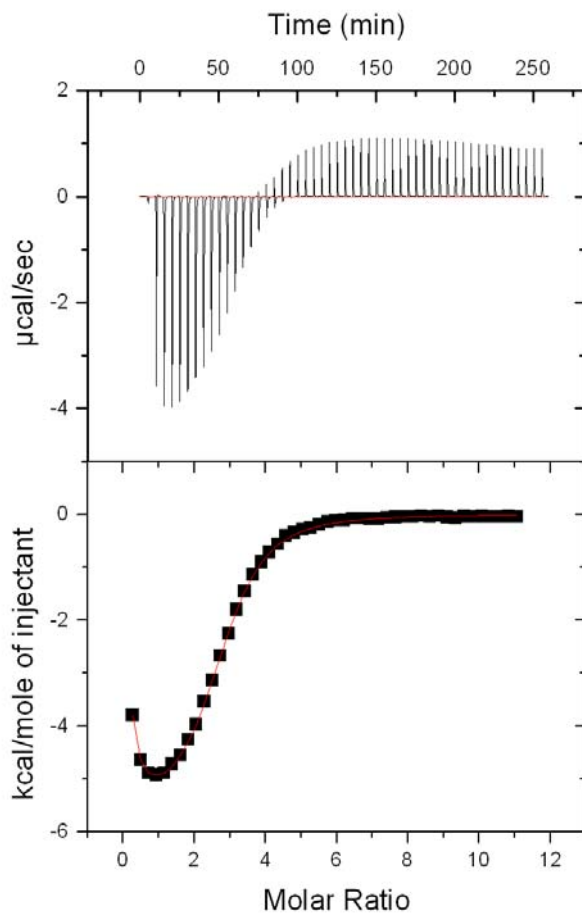
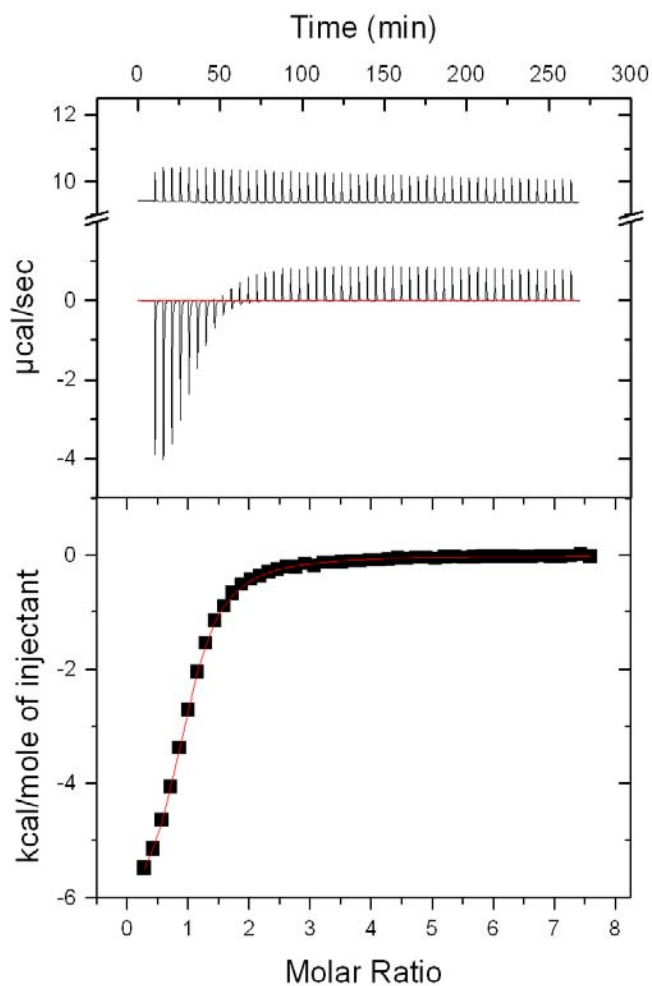


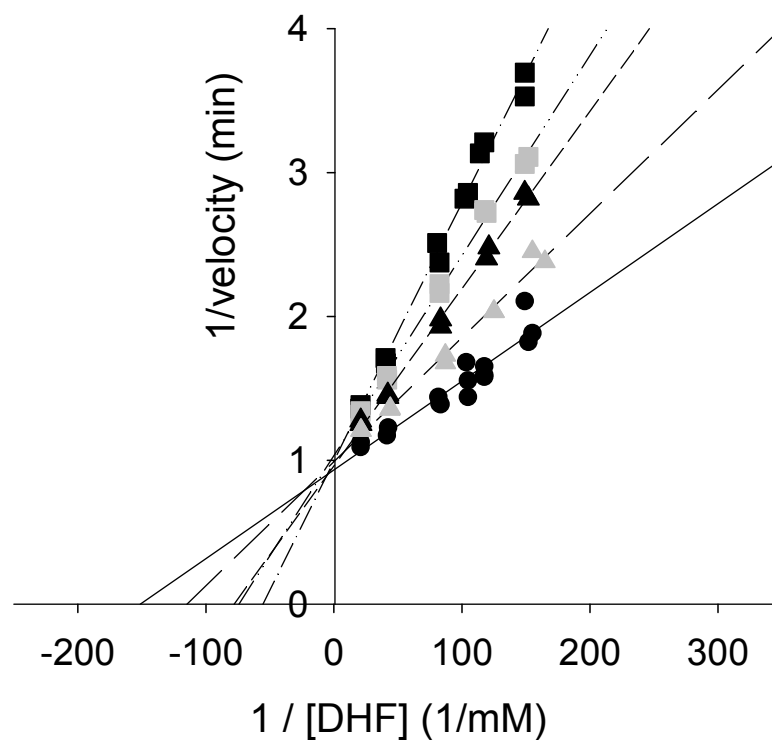
**Supplemental Figures, Jackson et al.**



Titration of 2-desamino-2-methyl-5,8-dideazafolate (DMDDF) into R67 DHFR. The top panel shows the injections, the bottom panel the integrated heat associated with the titration. Protein concentration was  $93\mu\text{M}$ . Best fit values are listed in Table 2 of the paper.



Titration of pteroyldi- $\gamma$ -L-glutamate into R67 DHFR•NADPH. The top panel shows the injections, the bottom panel the integrated heat associated with the titration. The two titrations in the top panel describe the control injection of ligand into buffer and the addition of ligand to R67 DHFR•NADPH, respectively. The protein concentration was 146 $\mu$ M. Best fit values are listed in Table 3 of the paper.



A representative Lineweaver Burke plot showing competitive inhibition of R67 DHFR by 2-aza-2-desamino-N<sup>10</sup>-methyl-5,8-dideazafolic acid (ADMDF; at saturating [NADPH]). Data points for no, 21μM, 42μM, 63μM, 84μM inhibitor are given by ●, ▲, ▲, ■, and ■ points respectively. The respective lines are given by solid, long dashed, short dashed, dash-dot-dot and dash-dot lines.