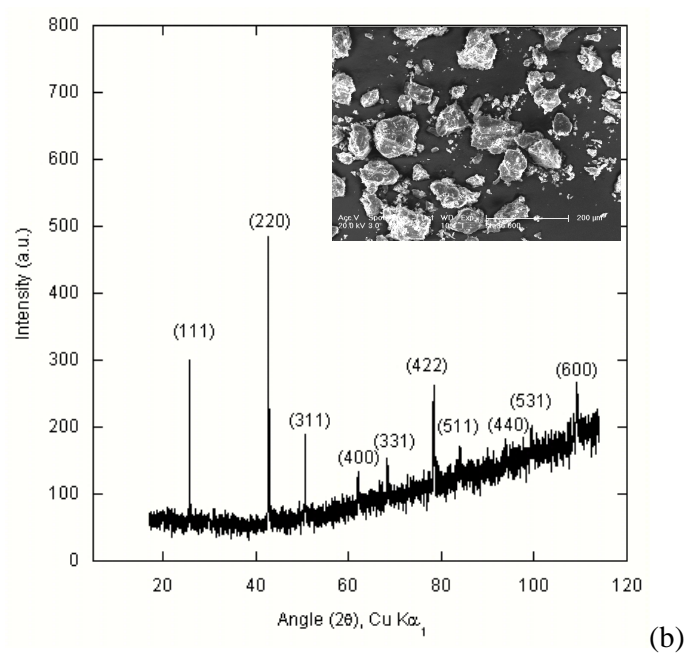
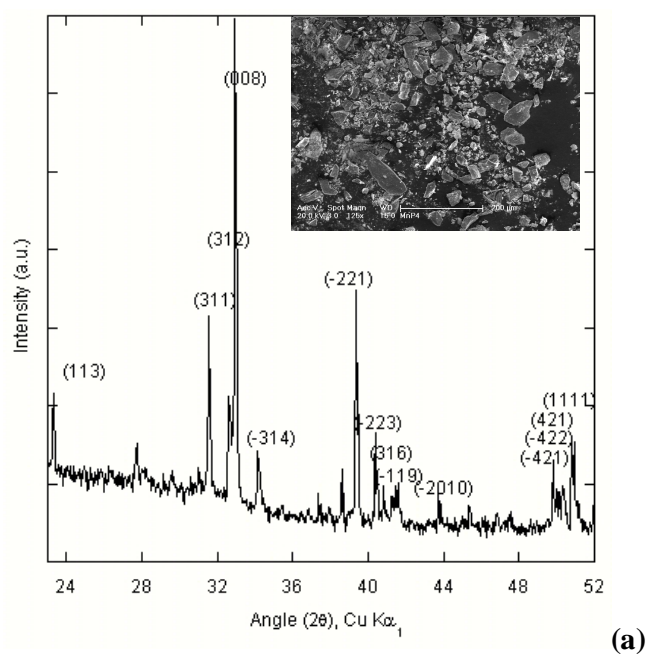
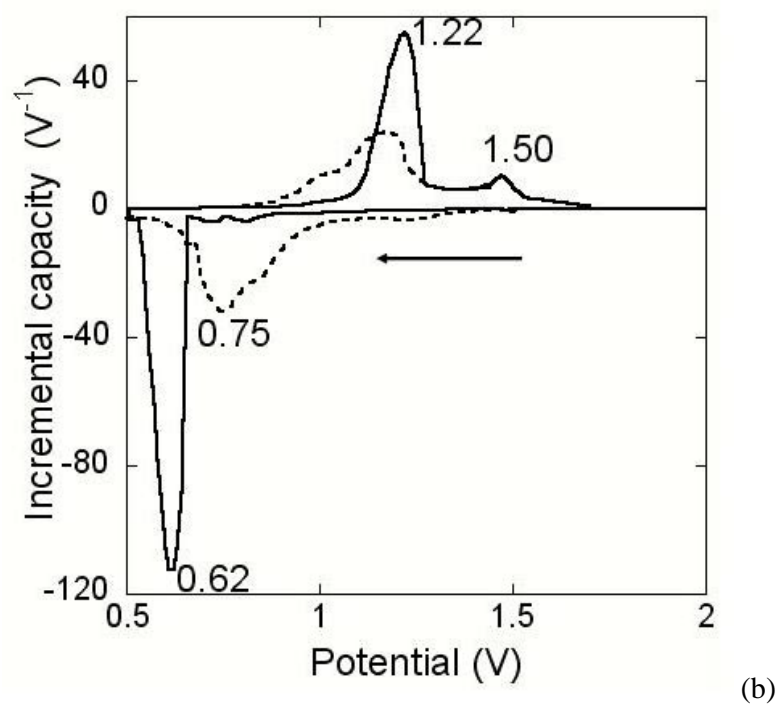
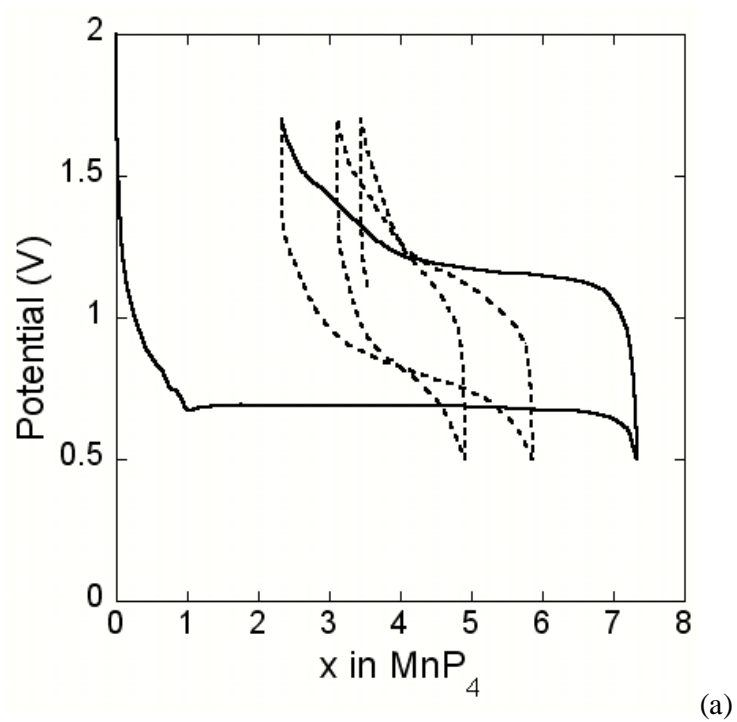


## Supplementary Materials



**SM1** : X-ray diffraction patterns ( $\text{Cu K}\alpha_1$ ) of (a)  $\text{MnP}_4$  prepared through tin-flux method and (b)  $\text{Li}_7\text{MnP}_4$  prepared by high-temperature synthesis. The insets correspond to the SEM images of  $\text{MnP}_4$  and  $\text{Li}_7\text{MnP}_4$  powders.



**SM2** : (a) Voltage–composition profile and (b) derivative  $dx/dV$  for the  $\text{MnP}_4/\text{Li}$  cell, at 1Li/15h in the 0.5- 1.7 Volt potential window.