

Supporting Information:

Figure S1: Spectra from Raman spectroscopy (at 633 nm wavelength excitation) showing the radial breathing mode (RBM) regime of PolyT30-SWNTs. Here, there is not much change (note the base line in the figure is not adjusted) in the RBM peak ratios upon addition of different concentration of Poly A30.

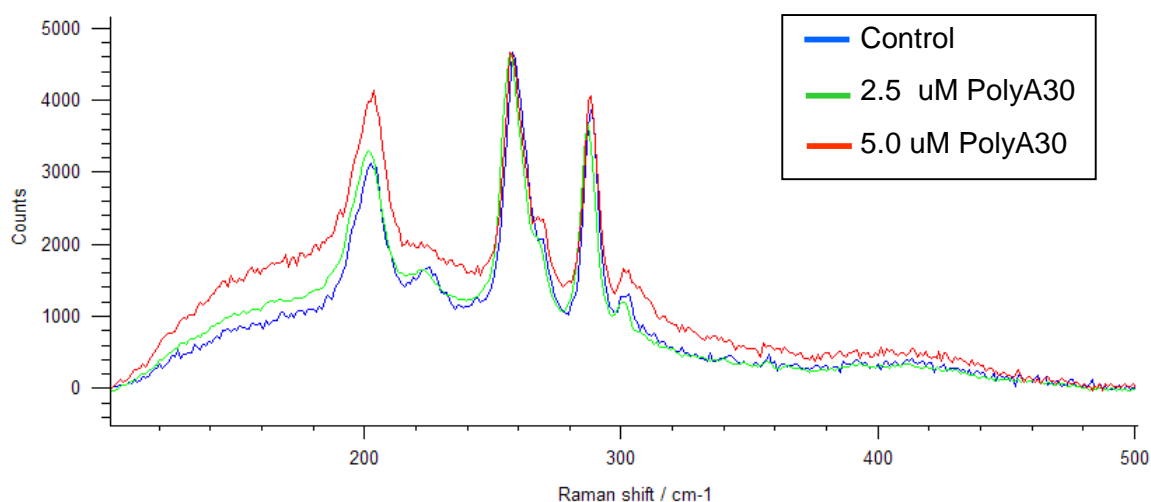


Figure S2: Spectra from Raman spectroscopy (at 785 nm wavelength excitation) showing the radial breathing mode (RBM) regime of PolyT30-SWNTs. Here, there is not much change (note the base line in the figure is not adjusted) in the RBM peak ratios upon addition of different concentration of Poly A30.

