

## **Turmeric Extracts Containing Curcuminoids Prevent Experimental Rheumatoid Arthritis**

Janet L. Funk<sup>\*,†,‡</sup>, Janice N. Oyarzo<sup>†,‡</sup>, Jennifer B. Frye<sup>†,‡</sup>, Guanjie Chen<sup>†,§</sup>, R.  
Clark Lantz<sup>†,§</sup>, Shivanand D. Jolad<sup>†,||</sup>, Aniko M. Sólyom<sup>†,⊥</sup>, and Barbara N.  
Timmermann<sup>†,||</sup>

<sup>†</sup>Arizona Center for Phytomedicine Research, <sup>‡</sup>Department of Medicine,  
<sup>§</sup>Department of Cell Biology and Anatomy, <sup>⊥</sup>Department of Pharmacology,  
University of Arizona, Tucson, AZ 85724 USA, and <sup>||</sup>Department of Medicinal  
Chemistry, School of Pharmacy, University of Kansas, Lawrence, KS 66045 USA

## **SUPPORTING DATA**

Footnote: Dedicated to Dr. Norman Farnsworth of the University of Illinois at Chicago  
for his pioneering work on bioactive natural products.

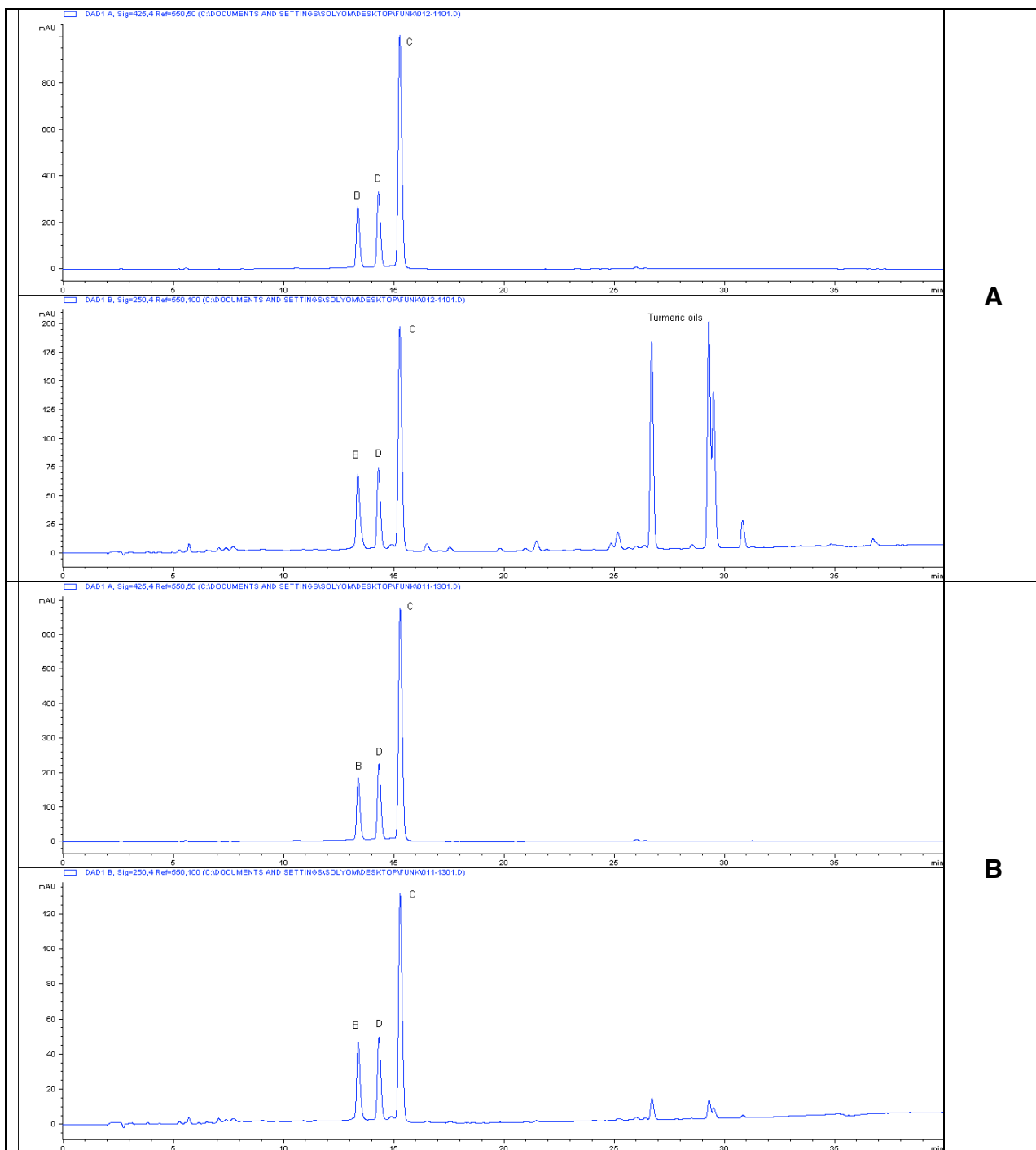
Corresponding Author: Janet L. Funk, MD  
Tele: (520) 626-3242  
Fax: (520) 626-1106  
Email: [jfunk@u.arizona.edu](mailto:jfunk@u.arizona.edu)

## Figures

S1. HPLC Chromatograms of (A) crude turmeric methanol extract, (B) essential oil-depleted turmeric fraction, and (C) purified curcuminoids (commercial curcumin) demonstrating three curcuminoid peaks common to all extracts and depletion of essential oils in samples (B) and (C). Samples (10  $\mu$ L) were injected onto a Synergy, 4 $\mu$ , Hydro-RP 250x4.6 mm column coupled with SecurityGuard AJO-4287 guard column (Phenomenex, Torrance, CA 90501). The mobile phases were (A) 500  $\mu$ L acetic acid/L of Nanopure water and (B) 500  $\mu$ L acetic acid/L of acetonitrile. The eluent was monitored at 425 nm, 370 nm, 280 nm and 250 nm; the flow rate was 1 mL/min.

S2. Effect of turmeric fraction on joint inflammation. Female Lewis rats were injected on day 0 with SCW (25  $\mu$ g/g) or vehicle. Joint swelling was assessed by daily calculation of the arthritic index (mean  $\pm$  SEM) with statistical significance determined by Students' T test as described in methods. (A) Turmeric fraction (23 mg/kg/d) or vehicle alone ip injections were begun 4 days prior to SCW administration (n=11 animals/group) and continued on a daily basis until 10 days after SCW injection at which time treatment frequency decreased to 5 days/week. \*  $p < 0.01$ . (B) Turmeric fraction (23 mg/kg/d) or vehicle alone ip injections were given daily beginning 8 days after SCW administration (n=10-11 animals/group). \*  $p < 0.01$ . (C) Turmeric fraction (4 mg/kg/d) or vehicle alone ip injections were begun 4 days prior to SCW administration (n=11 animals/group) and continued on a daily basis until 10 days after SCW injection at which time treatment frequency decreased to 5 days/week. \*  $p < 0.05$ .

Figure S1



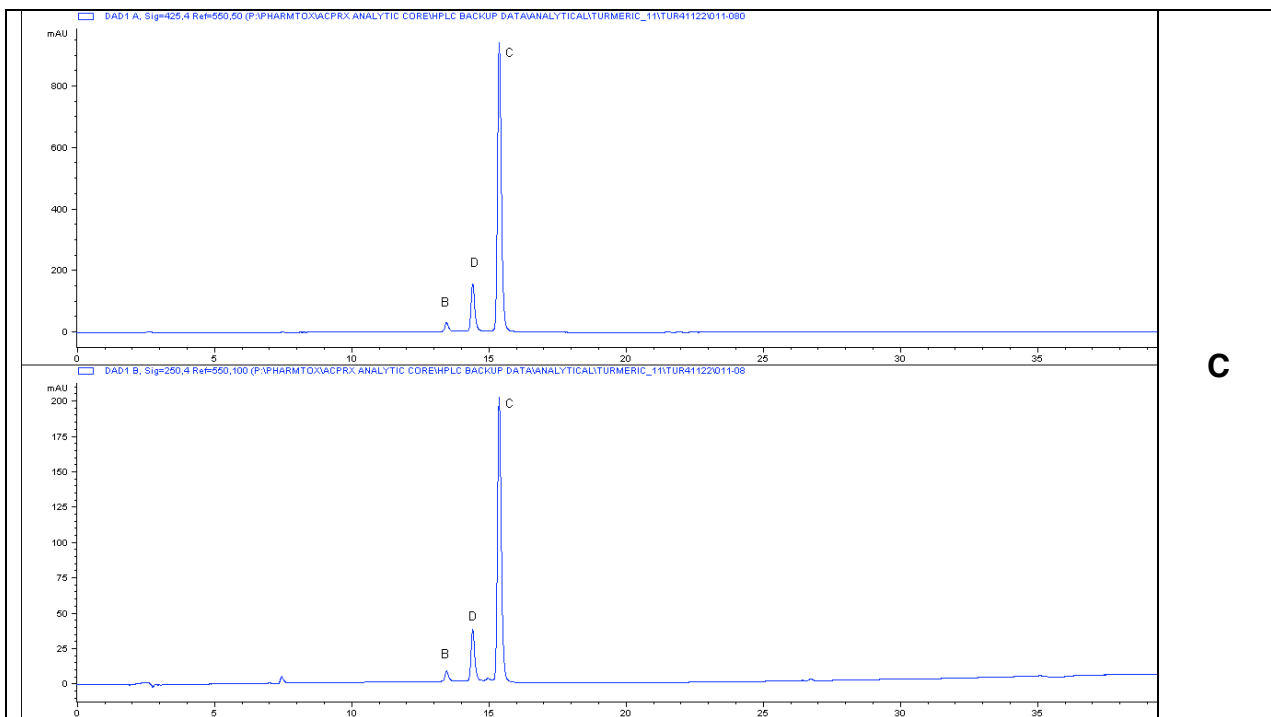


Figure 3A

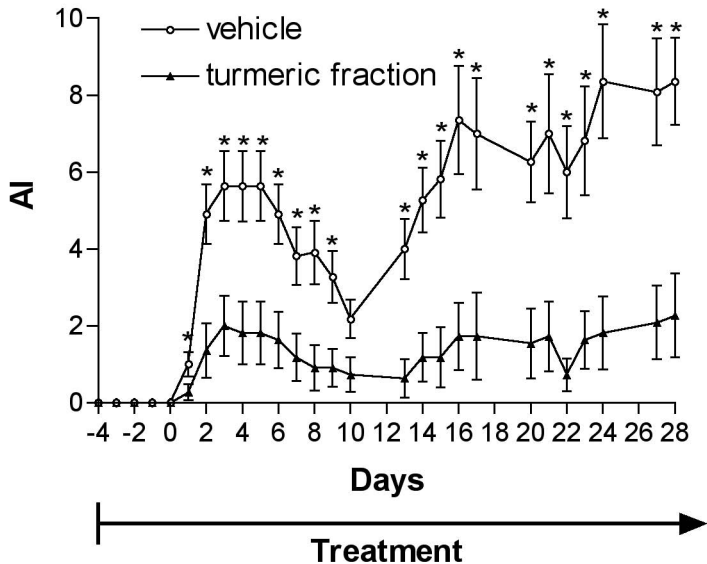


Figure 3B

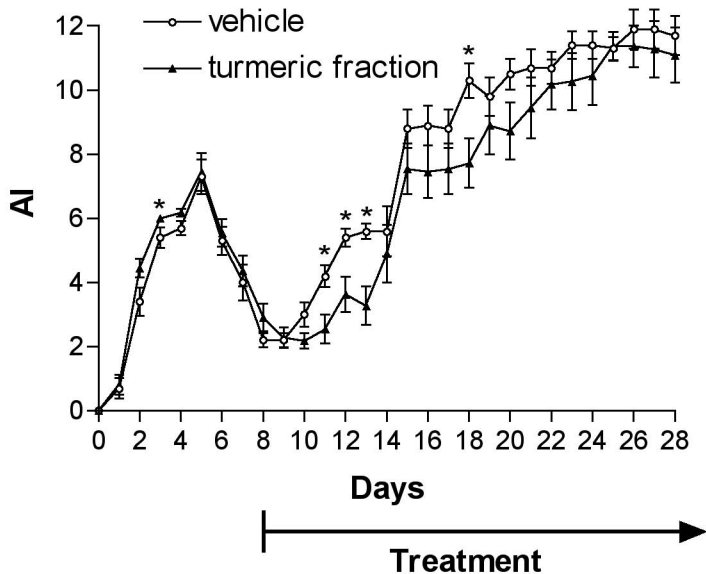


Figure 3C

