

From Nanomotors to Micromotors: The Influence of the Size of an Autonomous Bubble-Propelled Device upon Its Motion

*Hong Wang, James Guo Sheng Moo and Martin Pumera**

Division of Chemistry & Biological Chemistry, School of Physical and Mathematical Sciences, Nanyang Technological University, Singapore 637371, Singapore.

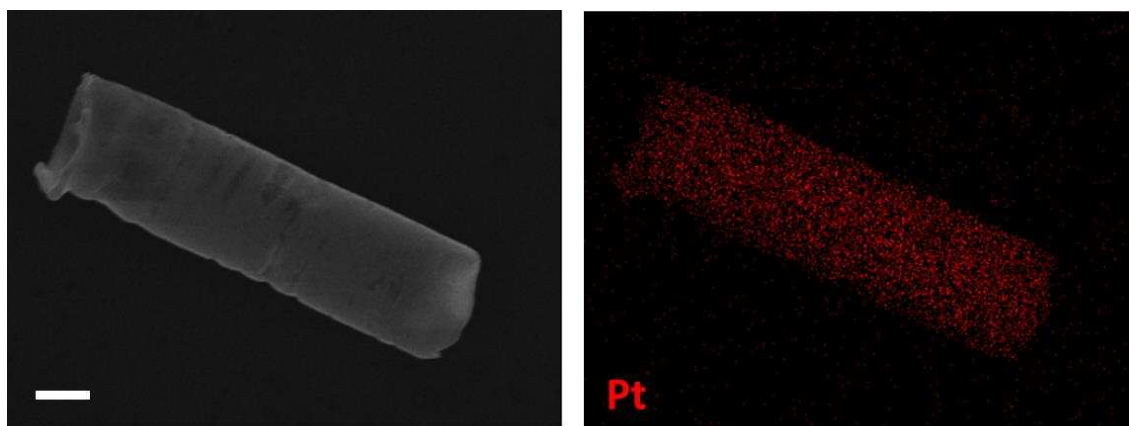


Figure S1. SEM and EDX images of Type A microtubes electrodeposited at -20 mA for 2000s in 5 μm pores. Scale bar is 2 μm .

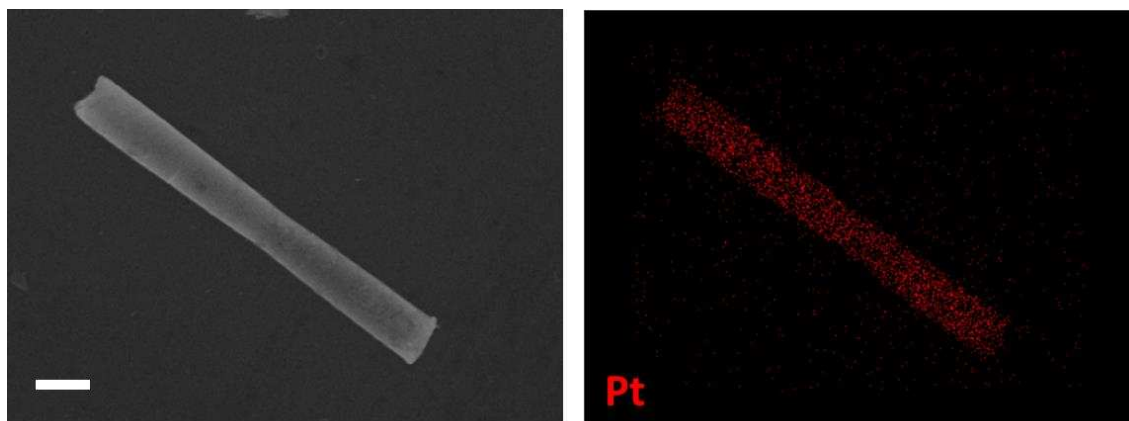


Figure S2. SEM and EDX images of Type B microtubes electrodeposited at -20 mA for 2000s in 2 μm pores. Scale bar is 2 μm .

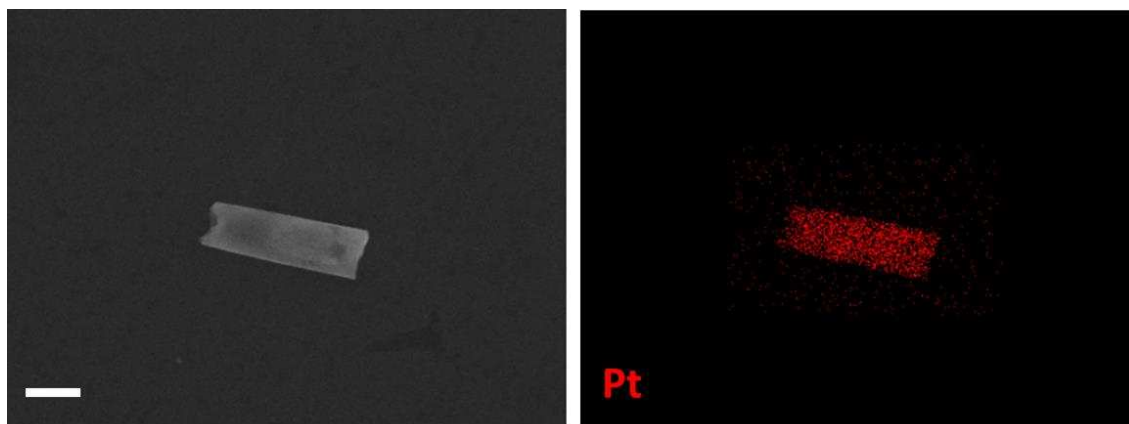


Figure S3. SEM and EDX images of Type C microtubes electrodeposited at -20 mA for 600s in 2 μm pores. Scale bar is 2 μm .

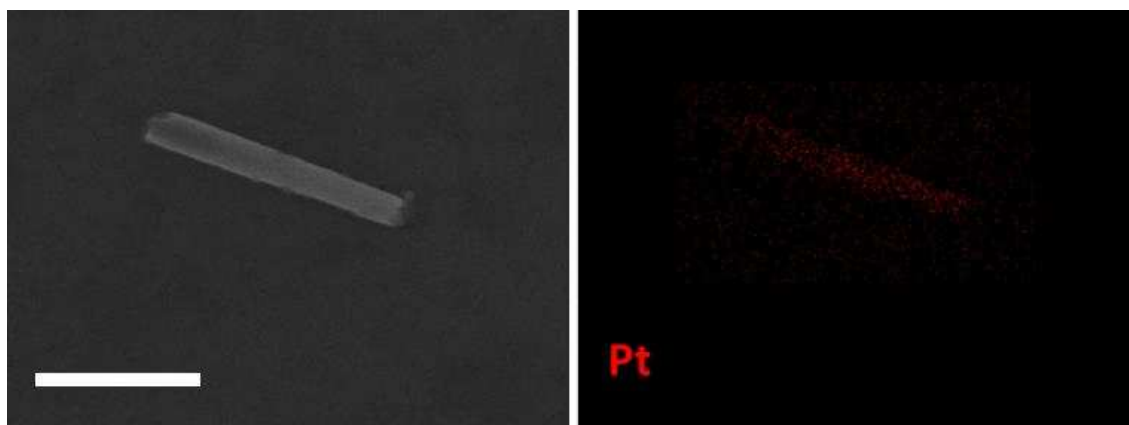


Figure S4. SEM and EDX images of Type D nanotubes electrodeposited at -2 mA for 1000s in 200 nm pores. Scale bar is 1 μm .