

Supporting Information

Potential Metabolic Activation of a Representative C2-Alkylated Polycyclic Aromatic Hydrocarbon 6-Ethylchrysene Associated With the Deepwater Horizon Oil Spill in Human Hepatoma (HepG2) Cells

Meng Huang,[†] Clementina Mesaros,[‡] Suhong Zhang,[‡] Ian A. Blair,^{†,‡} and Trevor M. Penning^{*,†,‡}

[†] Center of Excellence in Environmental Toxicology and [‡] Center for Cancer Pharmacology, Department of Systems Pharmacology and Translational Therapeutics, Perelman School of Medicine, University of Pennsylvania, Philadelphia, Pennsylvania 19104-6160, United States

Table of Contents

Figure S1. Excitation wavelength and emission wavelength spectra of 6-EC.

Figure S2. UV spectra of 6-EC and metabolites 1-9 in HepG2 cells.

Figure S3. Detection of 6-EC-dihydrodiols and monodehydrated 6-EC-dihydrodiols in human HepG2 cells. (A) Extracted ion chromatogram of Orbitrap full scan for 6-EC-dihydrodiols at 0 h. (B) Extracted ion chromatogram of Orbitrap full scan for 6-EC-dihydrodiols at 24 h and MS spectrum of the peak at 18.91 min. (C) Extracted ion chromatogram of Orbitrap full scan for monodehydrated 6-EC-dihydrodiols at 0 h. (D) Extracted ion chromatogram of Orbitrap full scan for monodehydrated 6-EC-dihydrodiols at 24 h and MS spectrum of the peak at 18.43 min.

Figure S4. Detection of monodehydrated 6-EC-tetraol and bis-dehydrated 6-EC-tetraol in human HepG2 cells. (A) Extracted ion chromatogram of Orbitrap full scan for monodehydrated 6-EC-tetraol at 0 h. (B) Extracted ion chromatogram of Orbitrap full scan for monodehydrated 6-EC-tetraol at 24 h and MS spectrum of the peak at 14.78 min. (C) Extracted ion chromatogram of Orbitrap full scan for bis-dehydrated 6-EC-tetraol at 0 h. (D) Extracted ion chromatogram of Orbitrap full scan for bis-dehydrated 6-EC-tetraol at 24 h and MS spectrum of the peak at 13.60 min.

Figure S5. Detection of bis-tetraol in human HepG2 cells. (A) Extracted ion chromatogram of Orbitrap full scan at 0 h. (B) Extracted ion chromatogram of Orbitrap full scan at 24 h and MS spectrum of the peak at 14.66 min.

Figure S6. Detection of O-monomethyl-catechol-6-EC-ortho-quinone in human HepG2 cells. (A) Extracted ion chromatogram of Orbitrap full scan at 0 h. (B) Extracted ion chromatogram of Orbitrap full scan at 24 h and MS spectrum of the peak at 19.68 min.

Figure S7. Detection of 6-EC-bis-ortho-quinone in human HepG2 cells. (A) Extracted ion chromatogram of Orbitrap full scan at 0 h. (B) Extracted ion chromatogram of Orbitrap full scan at 24 h and MS spectrum of the peak at 17.08 min.

This material is available free of charge via the Internet at <http://pubs.acs.org>.

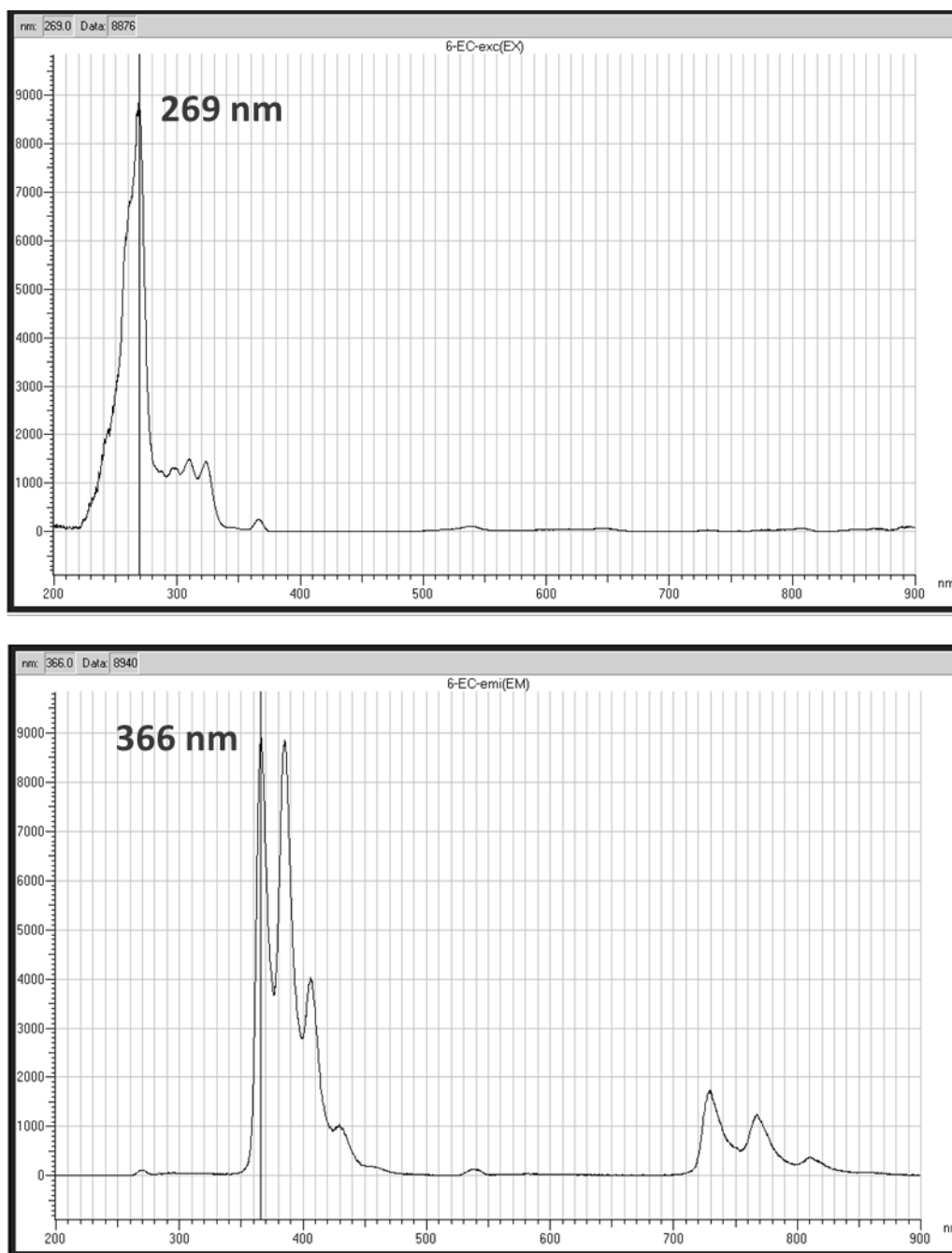


Figure S1. Excitation wavelength and emission wavelength spectra of 6-EC.

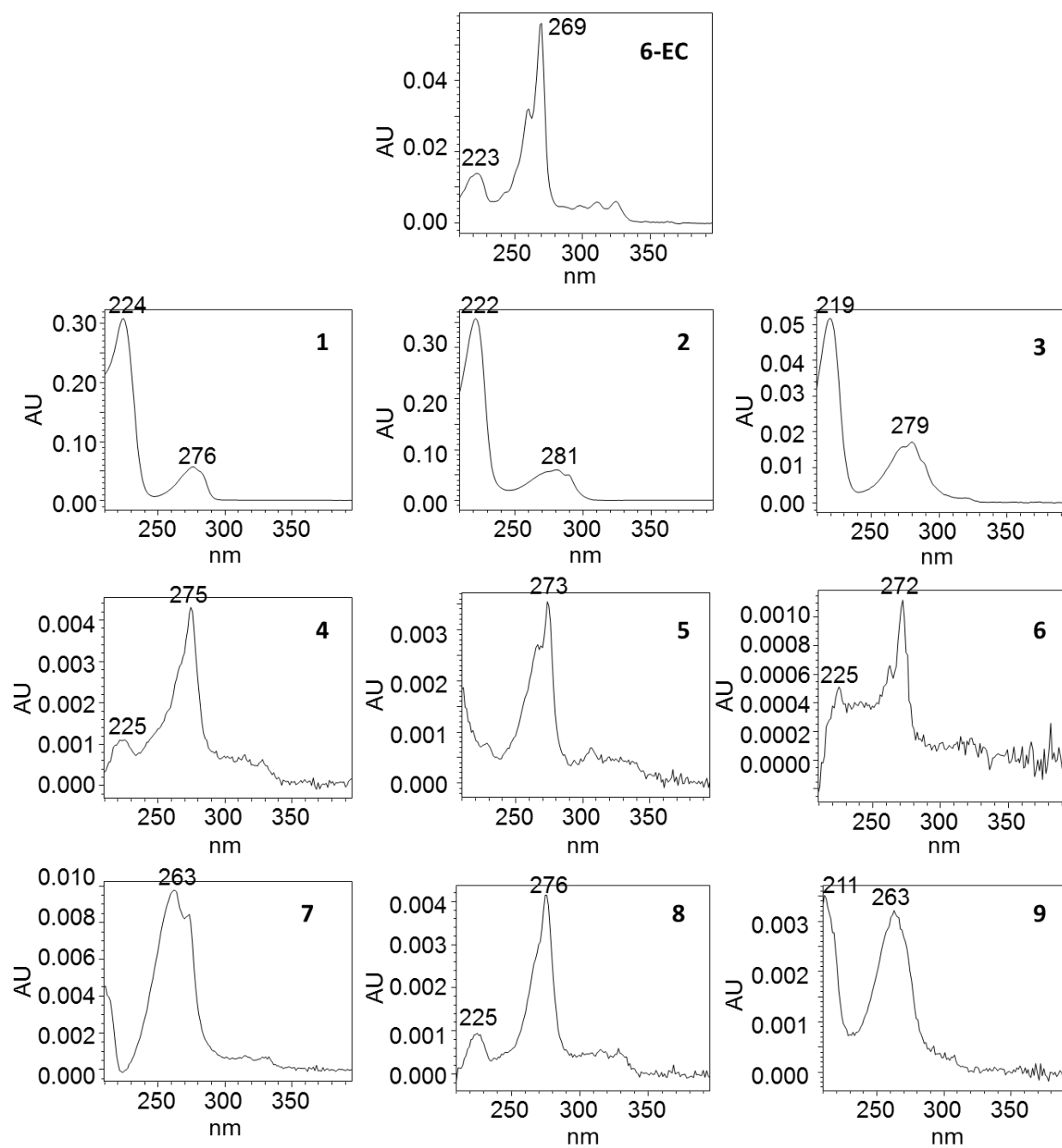


Figure S2. UV spectra of 6-EC and metabolite 1-9 in HepG2 cells.

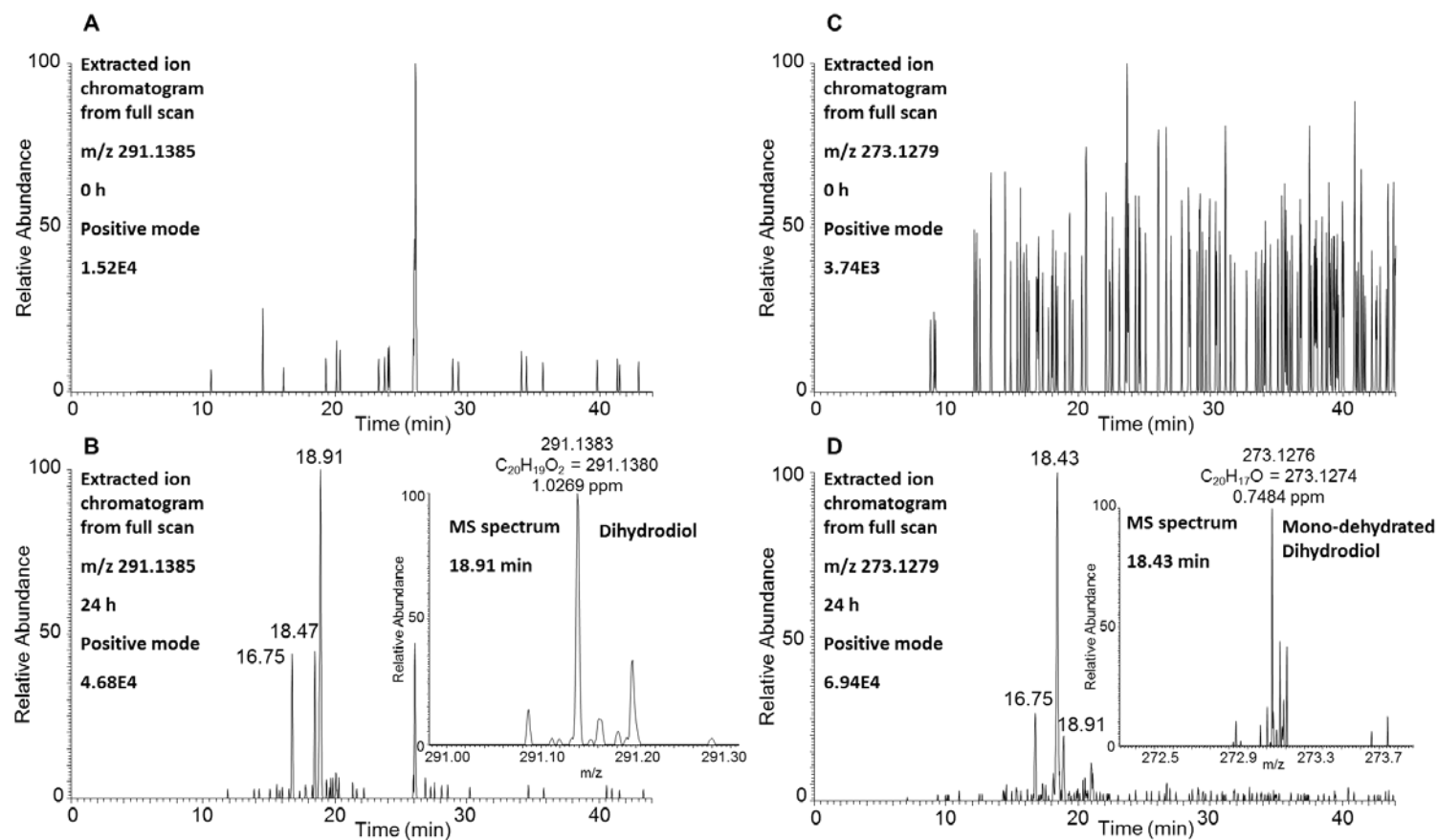


Figure S3. Detection of 6-EC-dihydrodiols and monodehydrated 6-EC-dihydrodiols in human HepG2 cells. (A) Extracted ion chromatogram of Orbitrap full scan for 6-EC-dihydrodiols at 0 h. (B) Extracted ion chromatogram of Orbitrap full scan for 6-EC-dihydrodiols at 24 h and MS spectrum of the peak at 18.91 min. (C) Extracted ion chromatogram of Orbitrap full scan for monodehydrated 6-EC-dihydrodiols at 0 h. (D) Extracted ion chromatogram of Orbitrap full scan for monodehydrated 6-EC-dihydrodiols at 24 h and MS spectrum of the peak at 18.43 min.

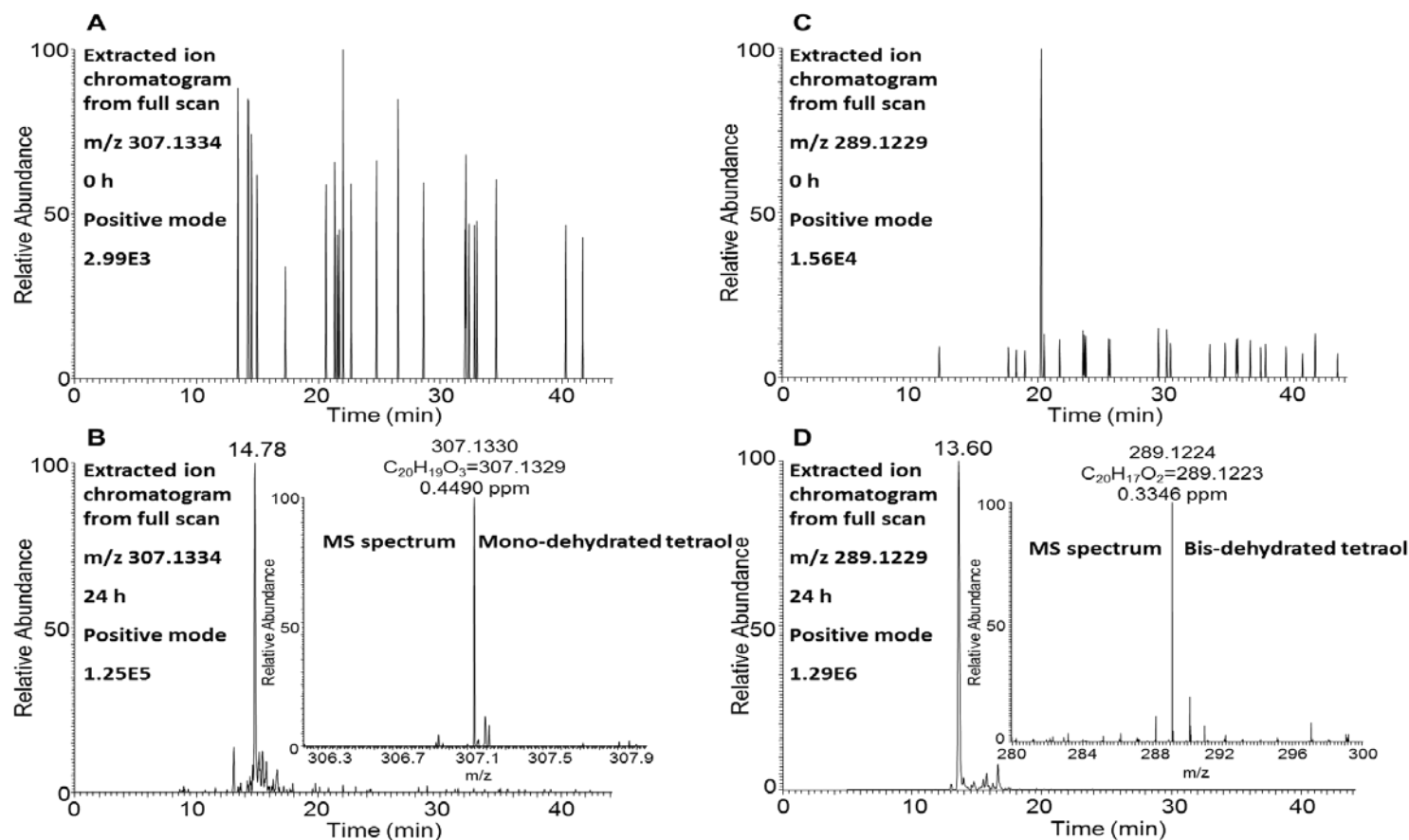


Figure S4. Detection of monodehydrated 6-EC-tetraol and bis-dehydrated 6-EC-tetraol in human HepG2 cells. (A) Extracted ion chromatogram of Orbitrap full scan for monodehydrated 6-EC-tetraol at 0 h. (B) Extracted ion chromatogram of Orbitrap full scan for monodehydrated 6-EC-tetraol at 24 h and MS spectrum of the peak at 14.78 min. (C) Extracted ion chromatogram of Orbitrap full scan for bis-dehydrated 6-EC-tetraol at 0 h. (D) Extracted ion chromatogram of Orbitrap full scan for bis-dehydrated 6-EC-tetraol at 24 h and MS spectrum of the peak at 13.60 min.

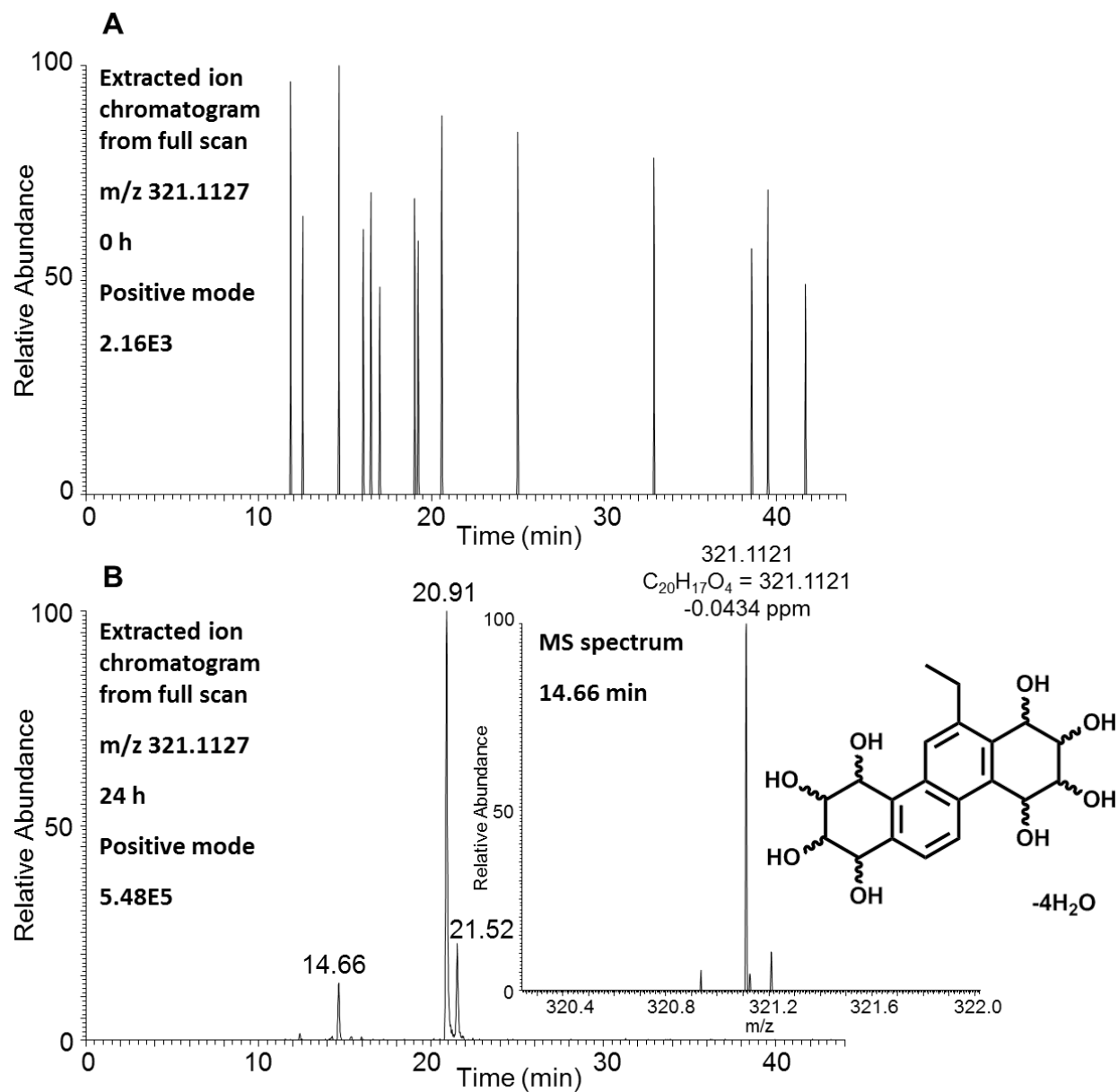


Figure S5. Detection of bis-tetraol in human HepG2 cells. (A) Extracted ion chromatogram of Orbitrap full scan at 0 h. (B) Extracted ion chromatogram of Orbitrap full scan at 24 h and MS spectrum of the peak at 14.66 min.

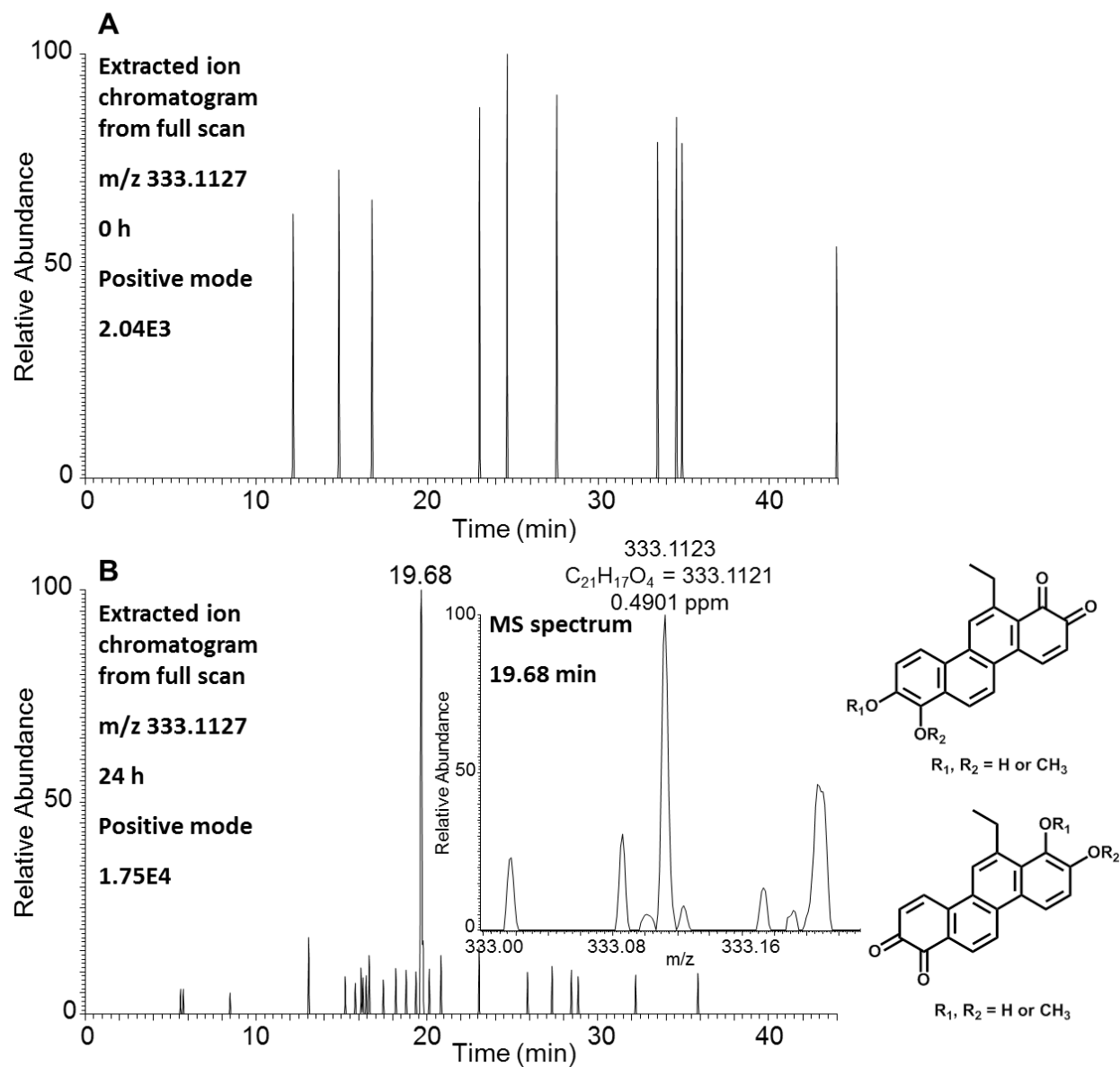


Figure S6. Detection of O-monomethyl-catechol-6-EC-ortho-quinone in human HepG2 cells. (A) Extracted ion chromatogram of Orbitrap full scan at 0 h. (B) Extracted ion chromatogram of Orbitrap full scan at 24 h and MS spectrum of the peak at 19.68 min.

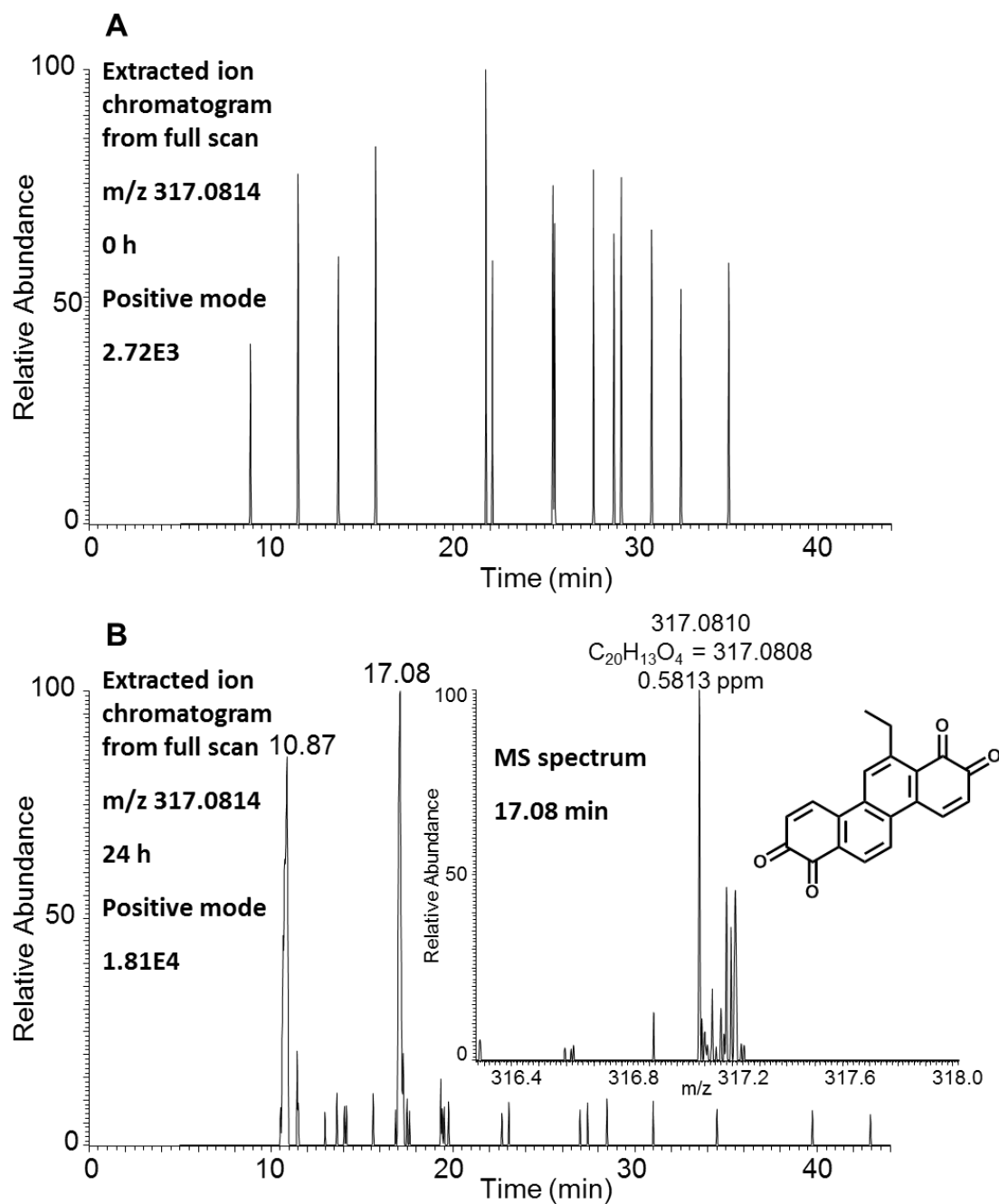


Figure S7. Detection of 6-EC-bis-ortho-quinone in human HepG2 cells. (A) Extracted ion chromatogram of Orbitrap full scan at 0 h. (B) Extracted ion chromatogram of Orbitrap full scan at 24 h and MS spectrum of the peak at 17.08 min.