

## Supporting information

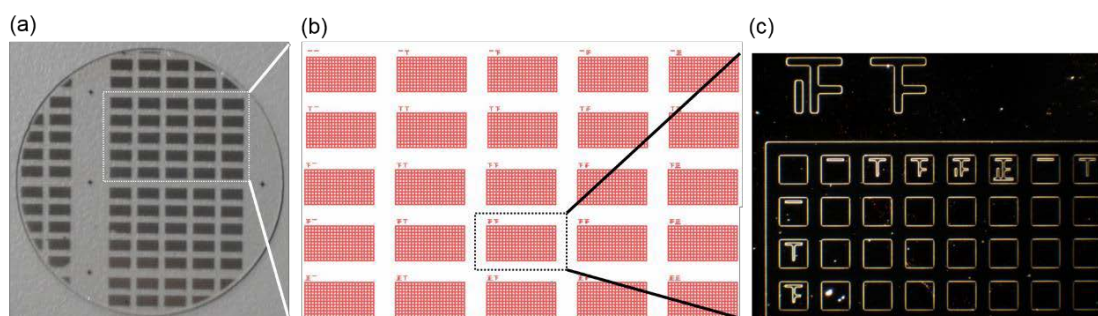
# Size Effect on SERS of Gold Nanorods Demonstrated via Single Nanoparticle Spectroscopy

Kai-Qiang Lin,<sup>†,‡</sup> Jun Yi,<sup>‡</sup> Shu Hu,<sup>‡</sup> Bi-Ju Liu,<sup>‡</sup> Jun-Yang Liu,<sup>‡</sup> Xiang Wang,<sup>‡</sup> and Bin Ren<sup>\*,†,‡,§</sup>

<sup>†</sup>Collaborative Innovation Center of Chemistry for Energy Materials, <sup>‡</sup>State Key Laboratory of Physical Chemistry of Solid Surfaces, and <sup>§</sup>The MOE Key Laboratory of Spectrochemical Analysis and Instrumentation, College of Chemistry and Chemical Engineering, Xiamen University, Xiamen 361005, China

Correspondence and requests for materials should be addressed to B.R. (email: bren@xmu.edu.cn)

### Fabrication of markers on a quartz substrate and SEM characterization.



**Figure S1.** (a) A photo of one inch quartz substrate with markers. (b) The layout of one period of pattern, which consists of  $5 \times 5$  units. (c) The dark-field image of part of one unit, which consists of  $22 \times 11$  squares of  $60 \mu\text{m}^2$ . Each row and column was labeled with a Chinese coordinates to identify every single square.