

■ Supporting information

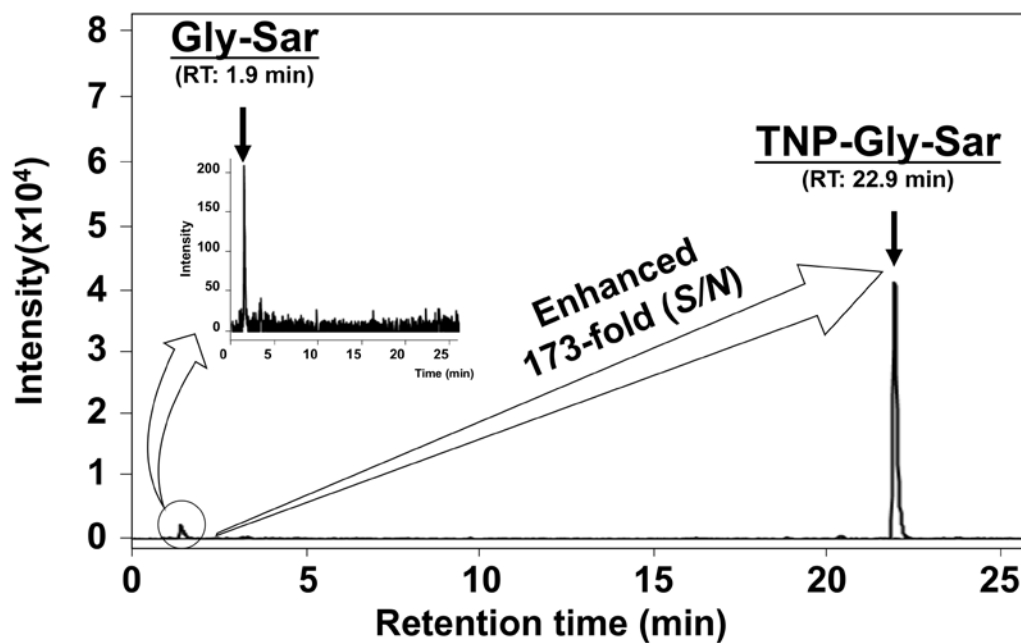


Figure S1. Enhanced detection of TNBS-derivatized Gly-Sar by LC-TOF-MS. Ten μ M Gly-Sar was derivatized with 150 mM TNBS at pH 8.5. The MS chromatogram shows the enhanced MS detection of TNBS-derivatized Gly-Sar (or TNP-Gly-Sar, m/z 358.0630), compared to underivatized Gly-Sar (m/z 147.0764). LC-TOF-MS conditions were described in the Materials and Methods section.

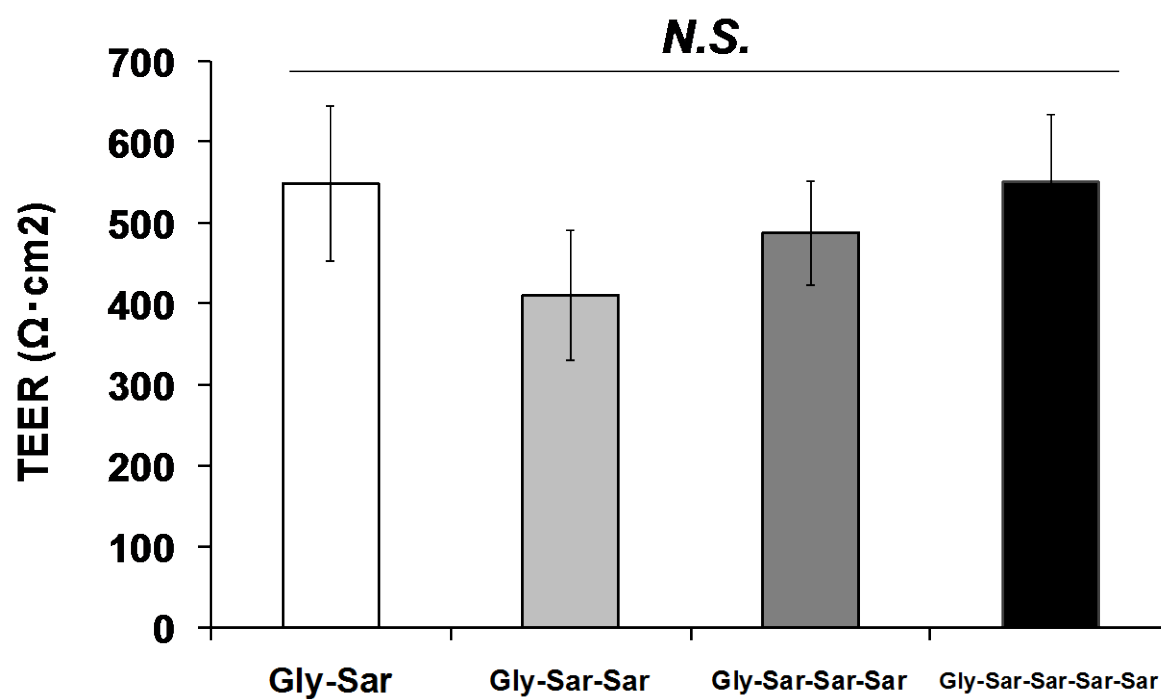


Figure S2. TEER values for the Caco-2 monolayers used in the transport experiments summarized in Table 1. TEER values were measured by using a Millicell ERS-2 epithelial volt-ohm meter. Values are expressed as the mean \pm SEM, $n=3$. Statistical differences were measured by one-way ANOVA. *N.S.*, not significant.