

Figure 1. XRD pattern of the ~50 nm single dispersed ceria particles synthesized via hydrothermal process, which are cubic CeO_2 . Inset shows their morphology observed by TEM.

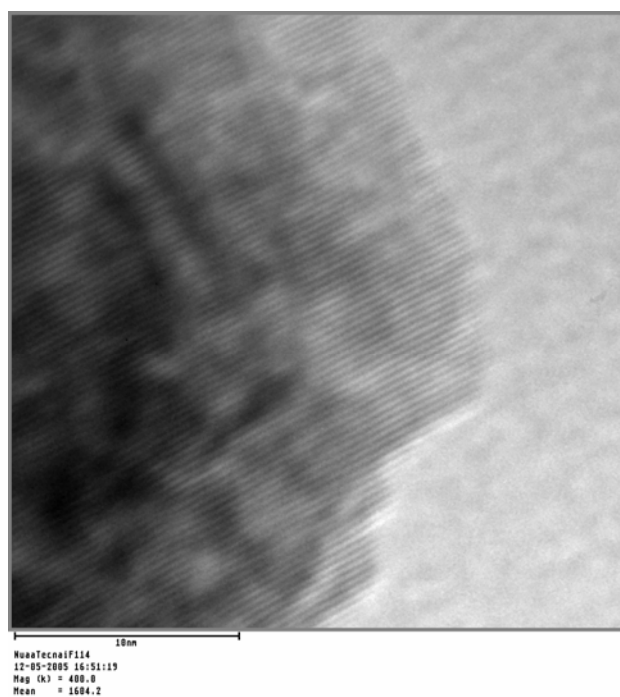


Figure 2. HRTEM image of one CeO_2 nanoparticle. The crystalline strips correspond to CeO_2 $\langle 111 \rangle$ planes with interval of 0.318 nm.

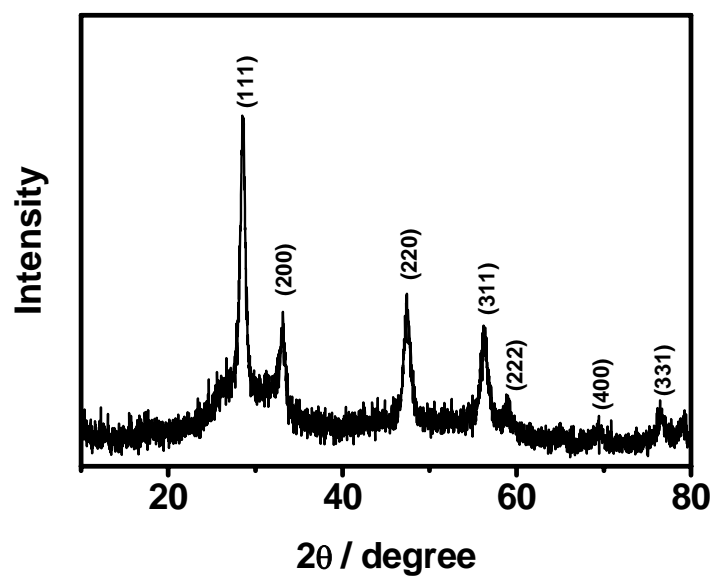


Figure 3. XRD profile of as-prepared titania nanotubes with ceria nanoparticle seeds, only diffraction peaks attributed to crystalline ceria are observed, indicating the titania is amorphous.