

Table 1. Precision and Accuracy Data of 4-Methylspinaceamine Determination in Food Sample

4-methylspinaceamine added (nmol/mL)	4-methylspinaceamine found (nmol/mL)	Precision C. V. (%)	Accuracy MRE ^{b)} (%)
0	n. d. ^{a)}		
2	1.99	1.65	-0.5
6	6.10	2.43	1.67
12	12.07	1.60	0.58

4-methylspinaceamine was added to the analytical samples (soy sauce D, 0.20 mL/mL, n = 4). ^{a)}Not detected. ^{b)}MRE = (concentration found – concentration added) / concentration added x 100.

Table 2. Precision and Accuracy Data of 1,4-Dimethylspinaceamine Determination in Human Urine

1,4-dimethylspinaceamine added (nmol/mL)	1,4-dimethylspinaceamine found (nmol/mL)	Precision C. V. (%)	Accuracy MRE ^{a)} (%)
0	n. d.		
0.2	0.211	7.35	5.68
1	1.04	2.01	3.8
2	2.02	4.04	0.82

1,4-dimethylspinaceamine was added to urine samples (n = 4). ^{a)}MRE = (concentration found – concentration added) / concentration added x 100.

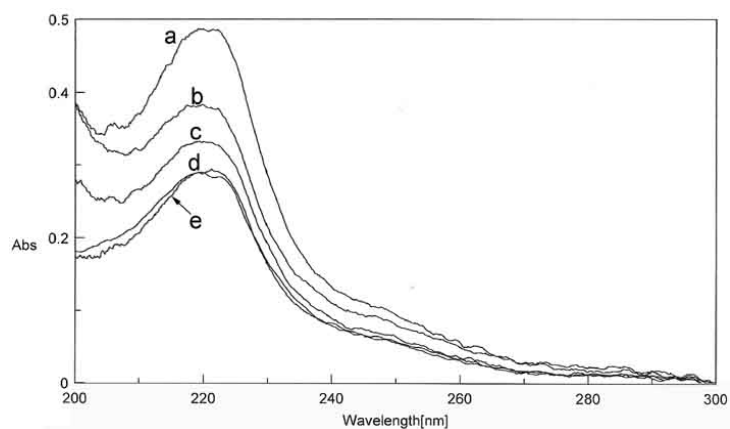


Figure 1. UV absorption spectra of (a) authentic **1**; HPLC fraction collected from (b) fish sauce sample; (c) cheese sample; (d) soy sauce sample; (e) shao hsing wine sample.

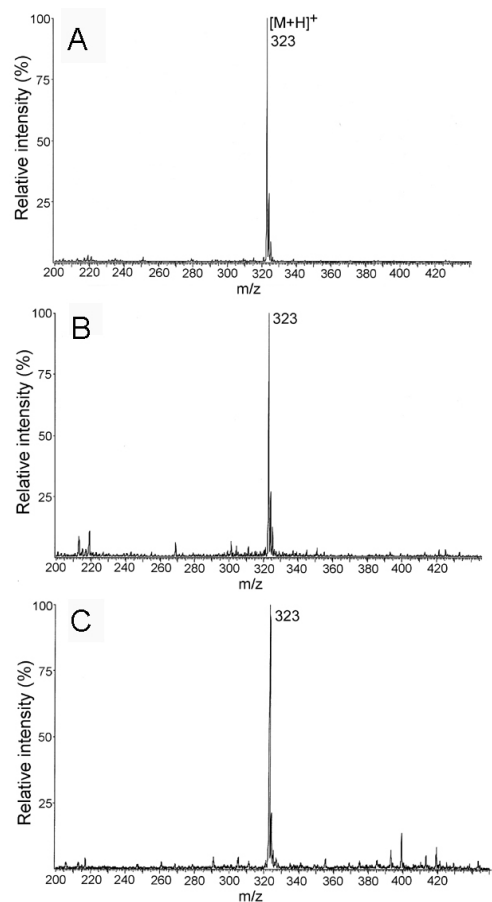


Figure 2. IS-MS spectra of (A) authentic **1**; HPLC fraction collected from (B) soy sauce sample; (C) soy sauce sample spiked with acetaldehyde-d₄ (2 μmol).

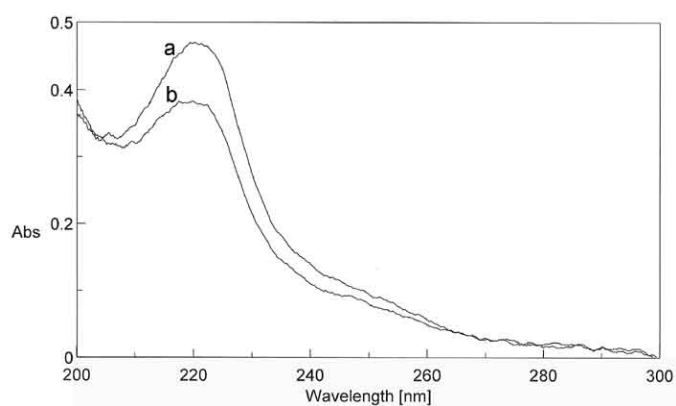


Figure 3. UV absorption spectra of (a) authentic **2**; (b) HPLC fraction collected from urine sample after ingestion of 4-methylspinaceamine-containing cheese.

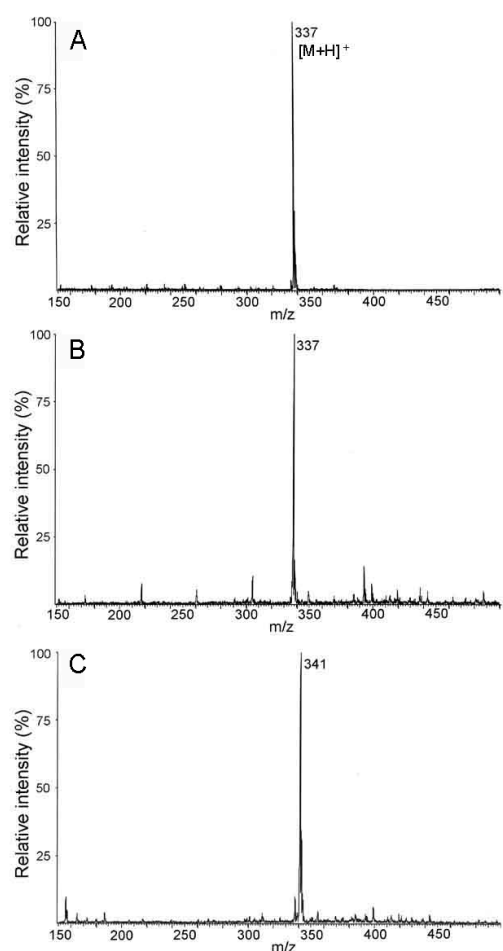


Figure 4. IS-MS spectra of (A) authentic **2**; HPLC fraction collected from urine sample (B) 2 h after ingestion of 4-methylspinaceamine-containing cheese; (C) 2 h after administration of 4-methylspinaceamine- d_4 (1 μ mol).