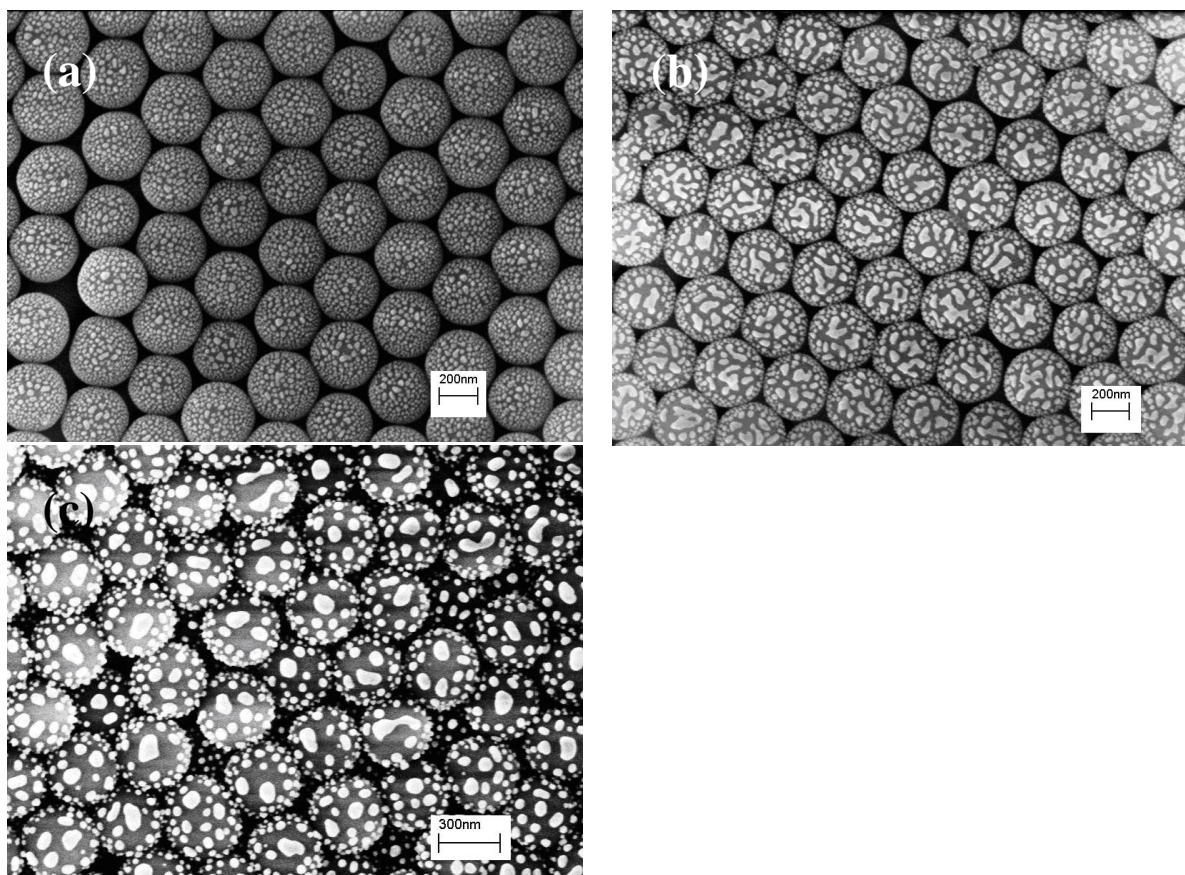


Supporting information

Biomimetic Creation of Hierarchical Surface Structures by  
Combining Colloidal Self-Assembly and Au Sputter Deposition

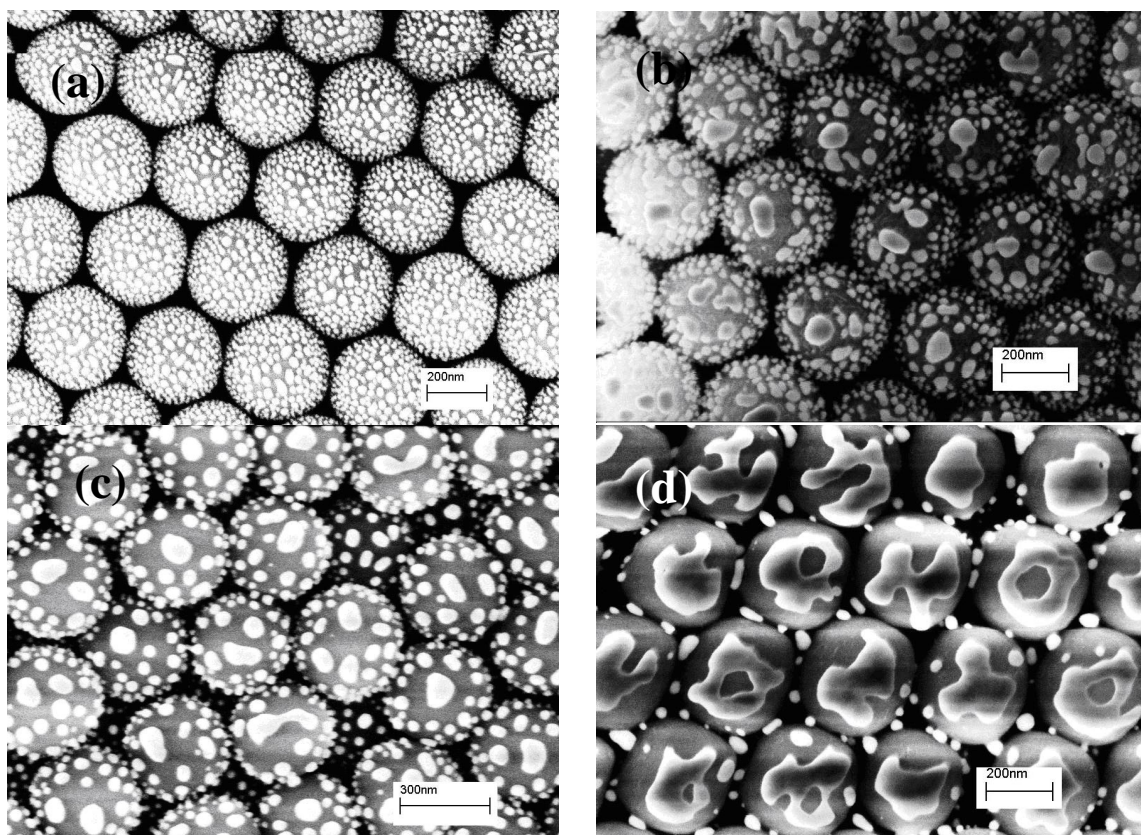
Yonghao Xiu<sup>1,2</sup>, Lingbo Zhu<sup>1,2</sup>, Dennis W. Hess<sup>1\*</sup>, C. P. Wong<sup>2\*</sup>



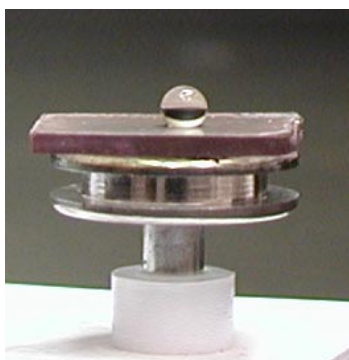
**Figure S1.** Effect of heat treatment time for a Au sputter deposition time of 90 sec; a) 10 min, b) 30 min, c) 2 hrs, all at 620°C.

---

\* Corresponding authors



**Figure S2.** SEM images of two-scale structured silica/Au surface morphology at various Au sputter deposition times; a) 40sec, b) 60 sec, c) 90 sec, d) 120 sec



**Figure S3.** Photograph of the superhydrophobic surface from silica sphere/Au nanoparticle sample shown in figure S2(c).