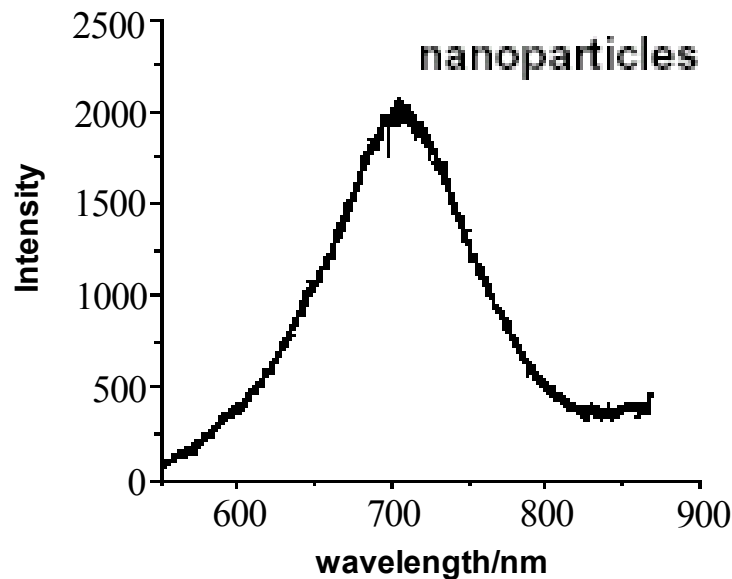
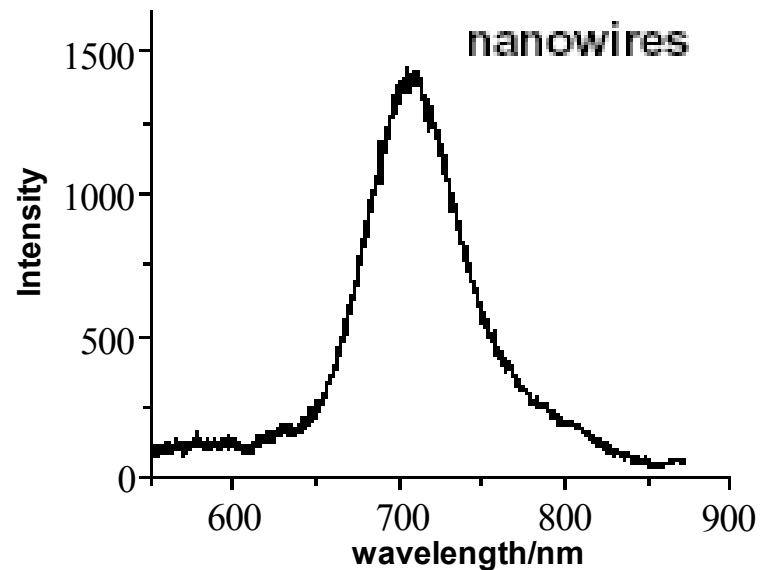


# PL spectra of nanoparticles and nanowires (D = 25 nm)



PL spectrum of nanoparticles obtained after one wetting cycle (FWHM  $\sim 80$  nm,  $\lambda_{\text{max}}$  corresponds to the bulk bandgap)



PL spectrum of nanowires obtained after four wetting cycles (FWHM  $\sim 57$  nm,  $\lambda_{\text{max}}$  corresponds to the bulk bandgap)

# EDX spectra of the CdSe nanowires (left) and of the removed brittle shell (right)

