

Figure S1A

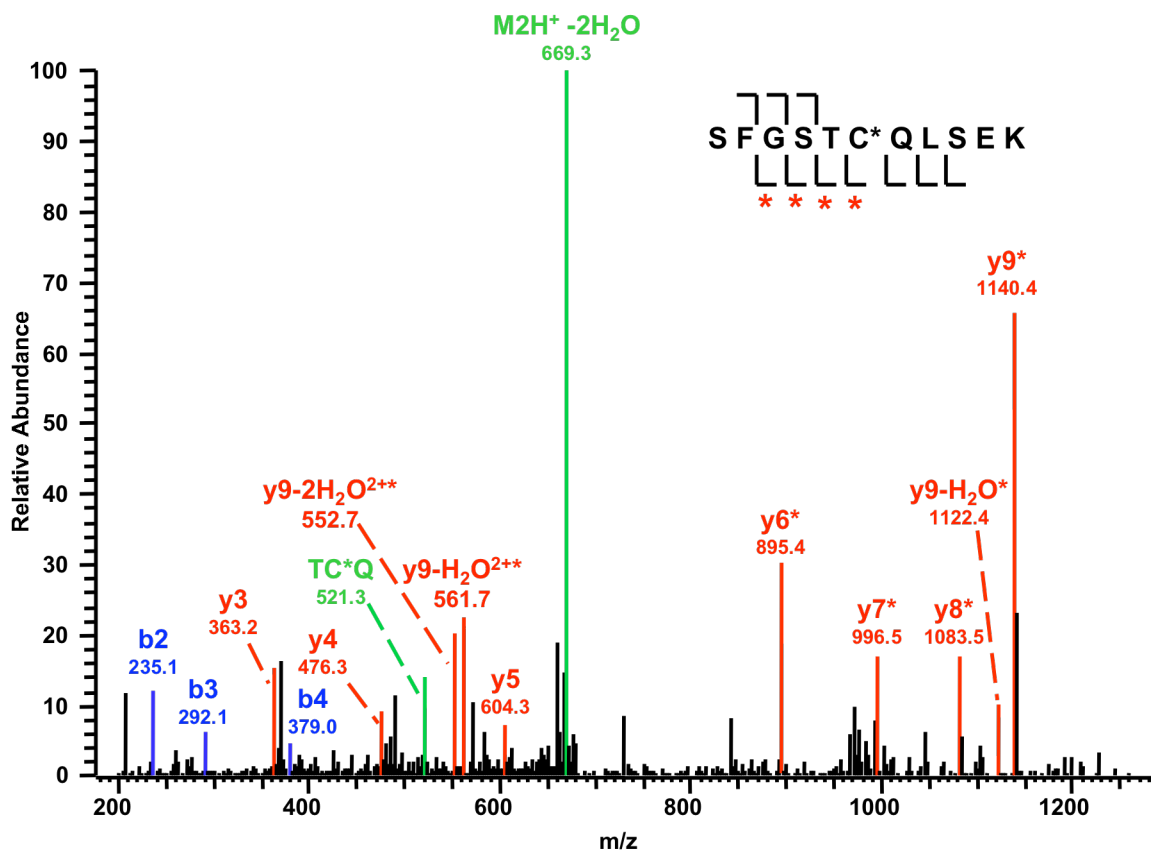


Figure S2B

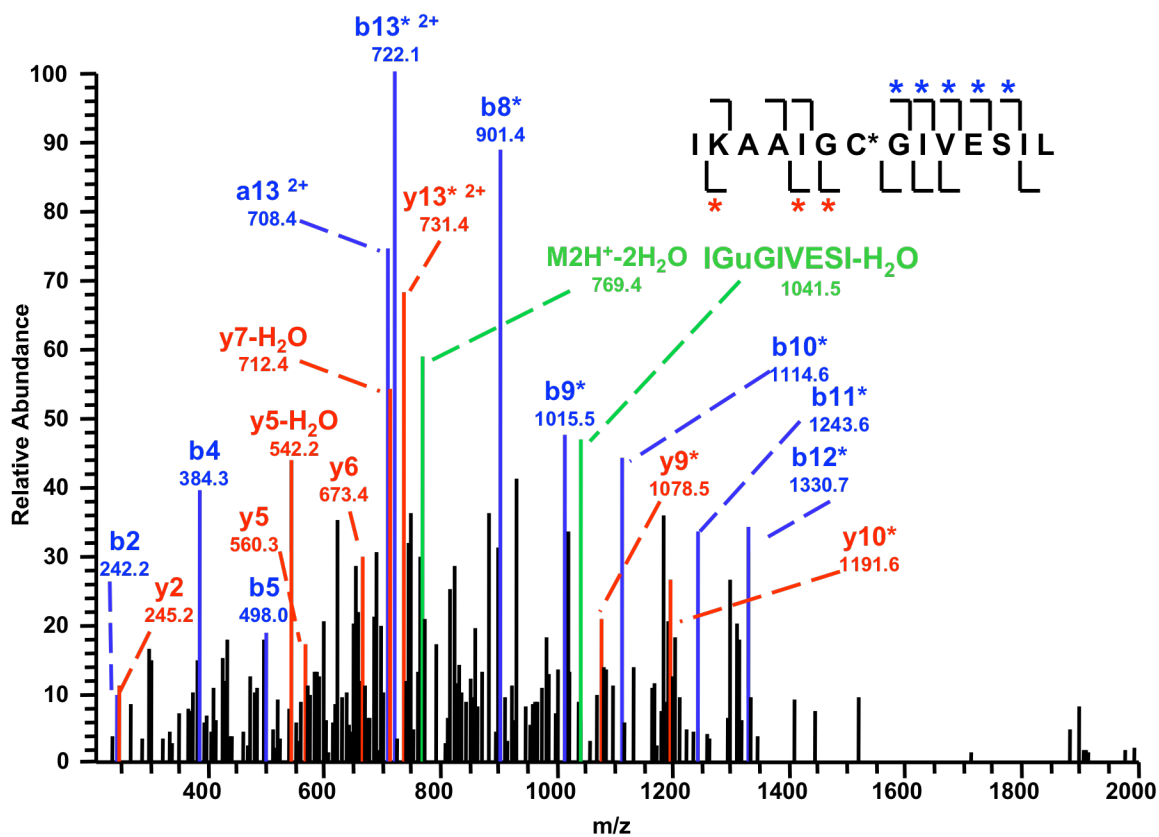


Figure S3A

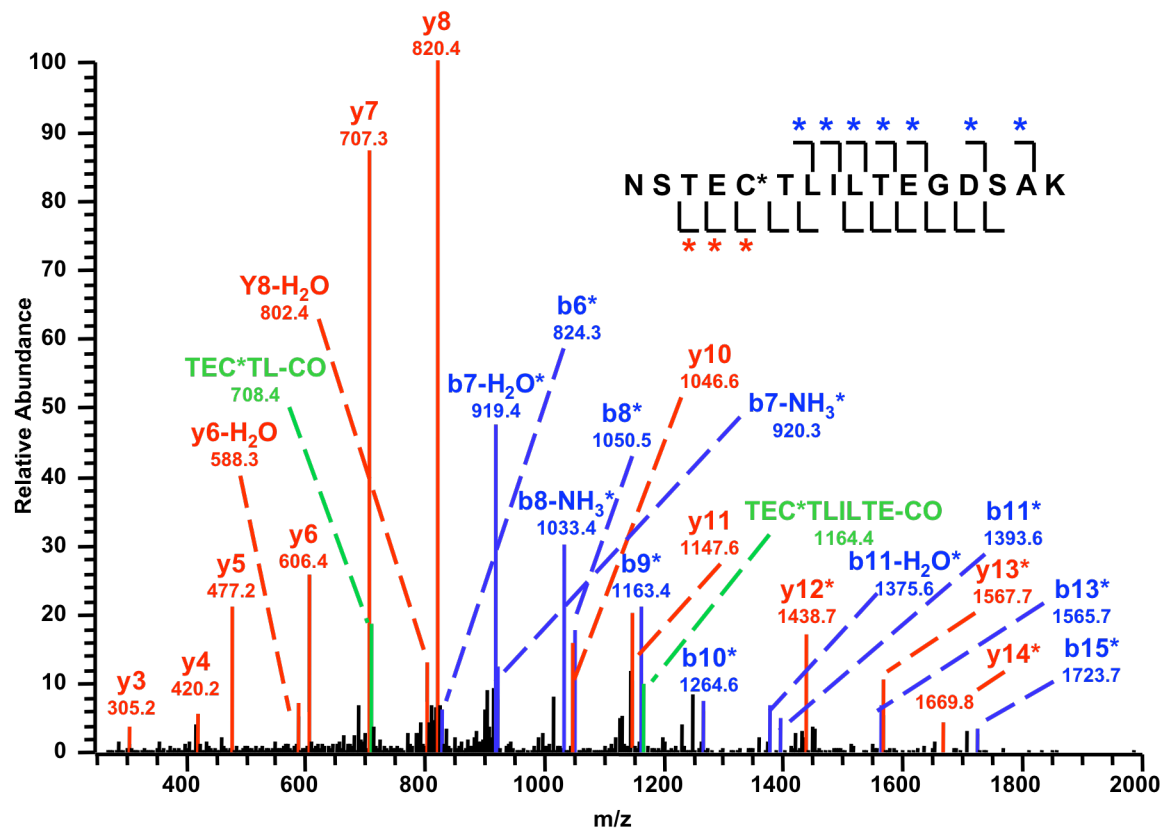


Figure S4D

FIGURE LEGENDS

FIGURE S1A-D: Low-energy CID spectra of peptides that contain the adducted a) cys170, b) cys392, c) cys405 or d) cys455 residues are shown. Fragment ions are labeled according to the accepted nomenclature. b-ions are coded blue, y-ions are coded red, and precursor ions are coded green. Asterisks denote b- or y-ions that contain the adducted cysteine residue. The insets show the sequence of the adducted peptides; the asterisk denotes the adducted cysteine residue and the black lines denote the identified cleavages.