

FIGURE 1. Excess area per molecule as a function of composition for pure and mixed POPE:CL monolayers at $30 \text{ mN} \cdot \text{m}^{-1}$.

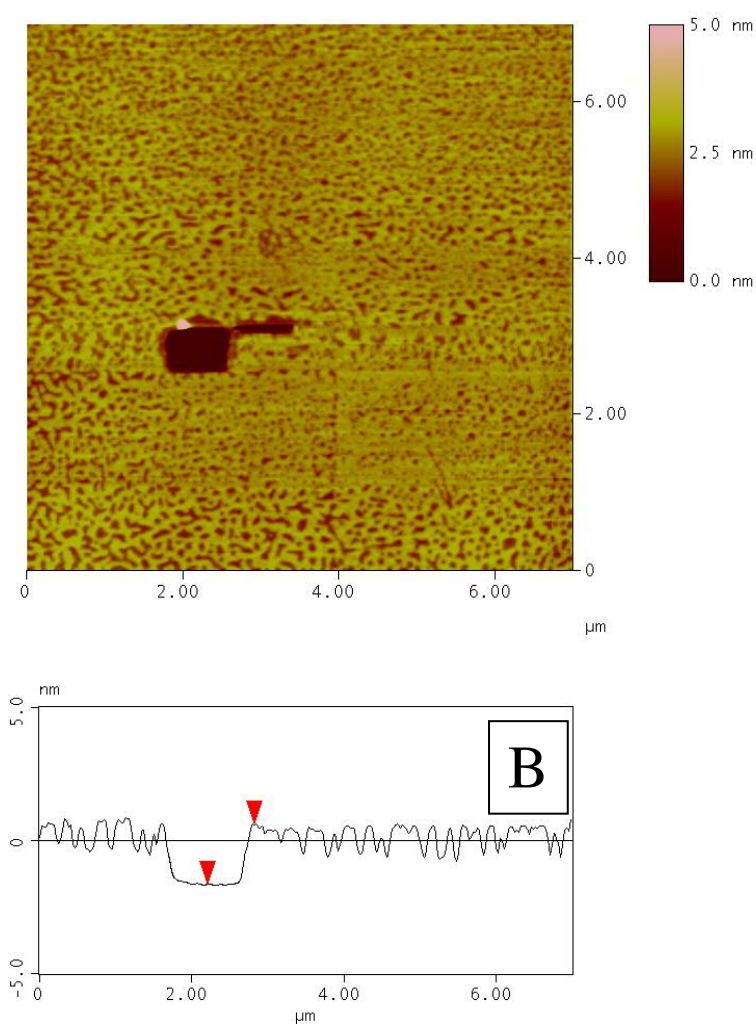


FIGURE 2. In this example, the POPE:CL monolayer transferred at $30 \text{ mN}\cdot\text{m}^{-1}$ that we are showing in Figure 3E has been scratched in a small area (A) in order to evaluate its thickness, The height profile analysis (B) allows to establish the step height between the monolayer and the uncovered substrate ($1.4 \pm 0.2 \text{ nm}$).