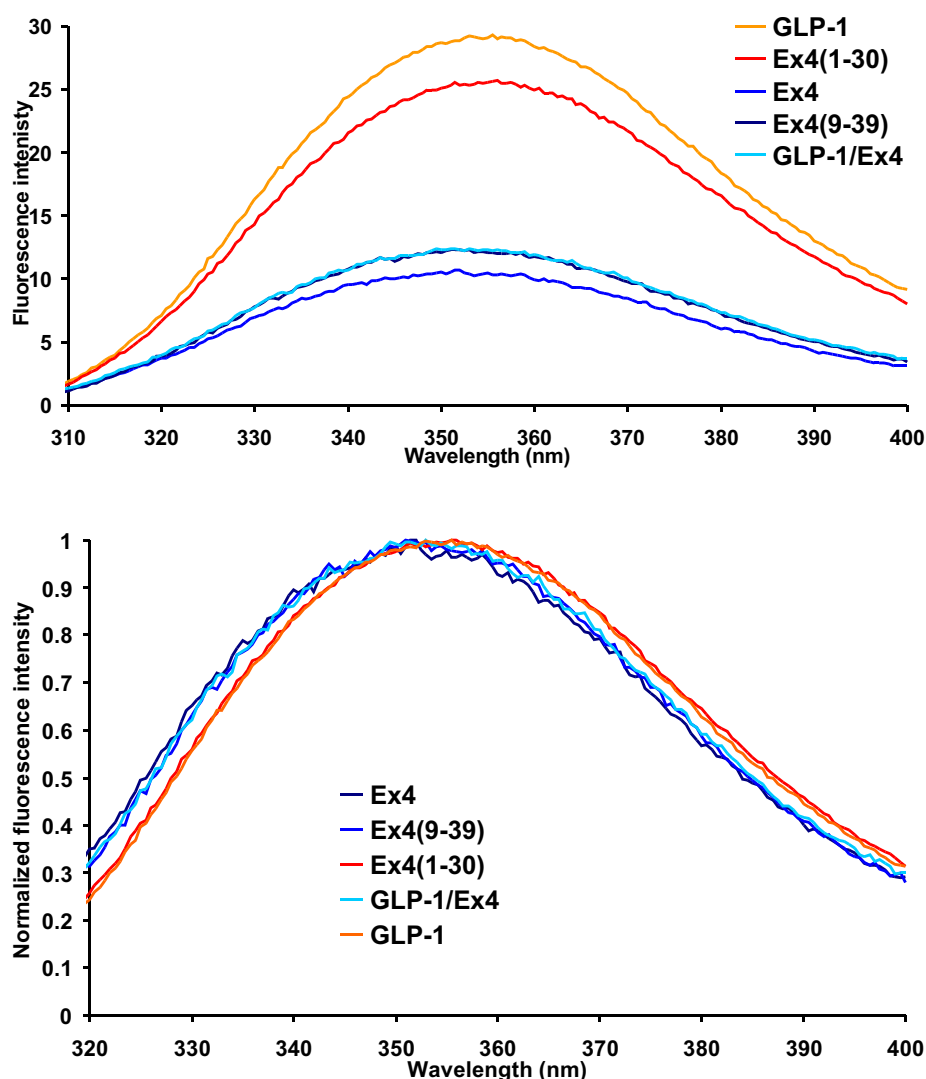


Supporting Figure 2



Supporting Figure 2. Fluorescence spectroscopy of the peptide ligands. The concentration was 4 μ M. Each spectrum represents the average of three scans. The top panel shows the measured fluorescence intensity to illustrate the differential fluorescence intensity of GLP-1 and Ex4 imposed by the Trp-cage. The bottom panel shows the normalized fluorescence intensity to emphasize the fluorescence blue shift due to the presence of the Trp-cage.