

## Supporting Information

# **Carbon Nanotubes Contain Residual Metal Catalyst Nanoparticles Even after Washing with Nitric Acid at Elevated Temperature Because These Metal Nanoparticles Are Sheathed by Several Graphene Sheets**

*Martin Pumera\**

*Dr. M. Pumera, ICYS, National Institute for Materials Science, 1-1 Namiki, Tsukuba, Ibaraki, Japan. Phone: +81-29-851-3354-8816; fax: +81-29-860-4706, email: PUMERA.Martin@nims.go.jp*

Figure S1 .....Page S-2

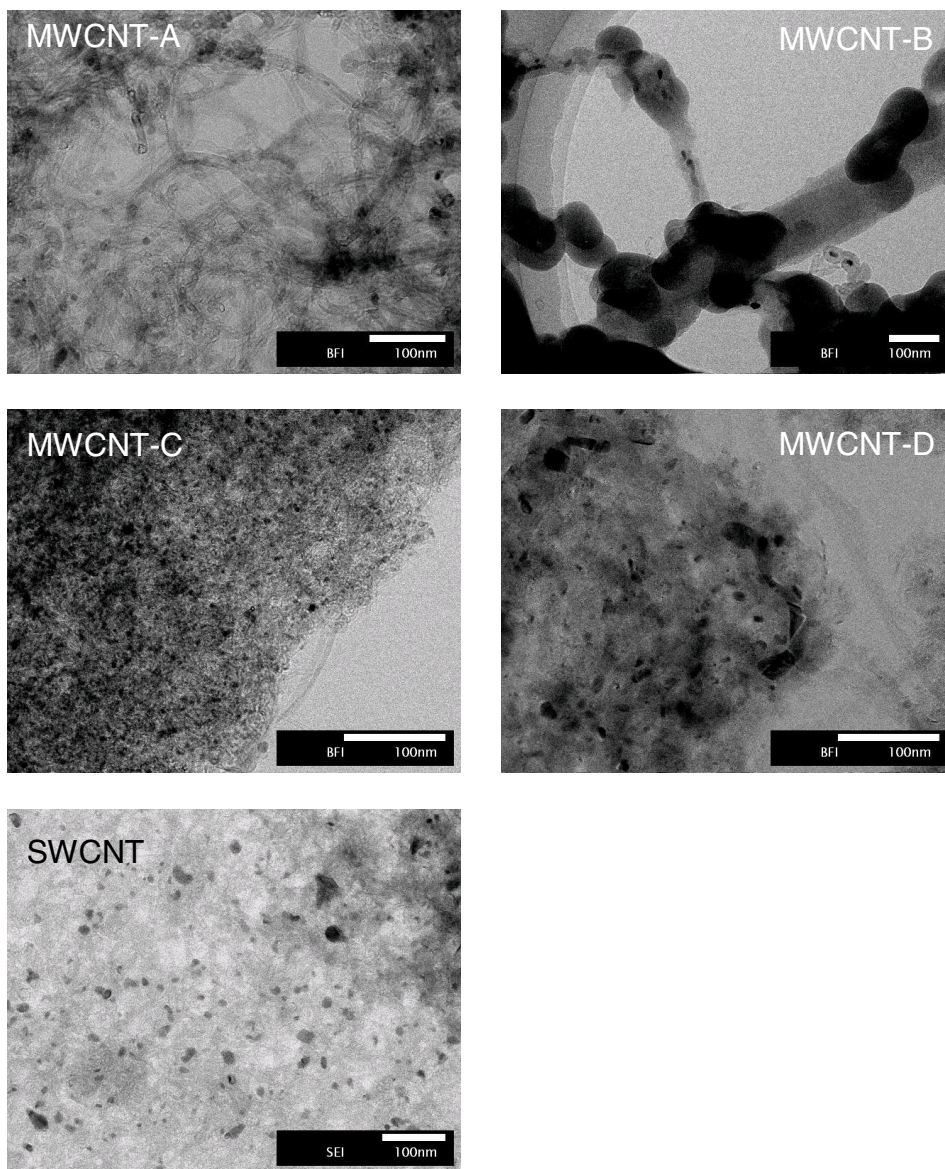


Figure S1. TEM images of as-received multi wall and single wall carbon nanotube materials before ‘washing’ with concentrated nitric acid at 80°C.