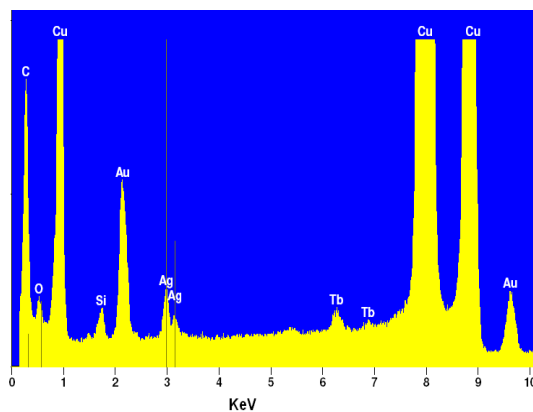


Synthesis of normal and inverted core-shell architectures of gold /silver in β -cyclodextrin and their applications in SERS

Surojit Pande, Sujit Kumar Ghosh, Snigdhamayee Praharaj, Sudipa Panigrahi, Soumen Basu, Subhra Jana, Anjali Pal[§], Tatsuya Tsukuda[†] and Tarasankar Pal*

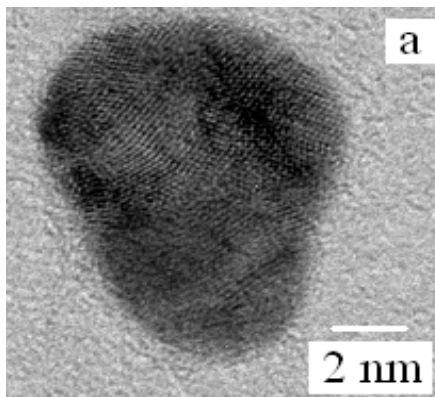
Supporting Information

SI 1. EDS spectra of Ag_{core}-Au_{shell} bimetallic nanoparticles.

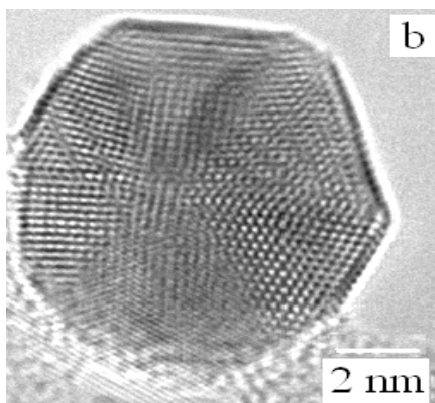


SI 1.

SI 2. HRTEM image of the Ag_{core}-Au_{shell} bimetallic nanoparticles (a) before and (b) after prolonged (~ 10 min) electron beam irradiation.



SI 2a.



SI 2b.