

## **Supporting Information**

### **Morphology and Photophysical Properties of Light-Emitting Electrospun**

#### **Nonofibers Prepared From Poly(fluorene) Derivatives/PMMA Blends**

Chi-Ching Kuo,<sup>a</sup> Chia-Hung Lin,<sup>b</sup> and Wen-Chang Chen<sup>a,b,\*</sup>

a: Institute of Polymer Science and Engineering, National Taiwan University, Taipei  
106, Taiwan, ROC

b: Department of Chemical Engineering, National Taiwan University, Taipei 106,  
Taiwan, ROC

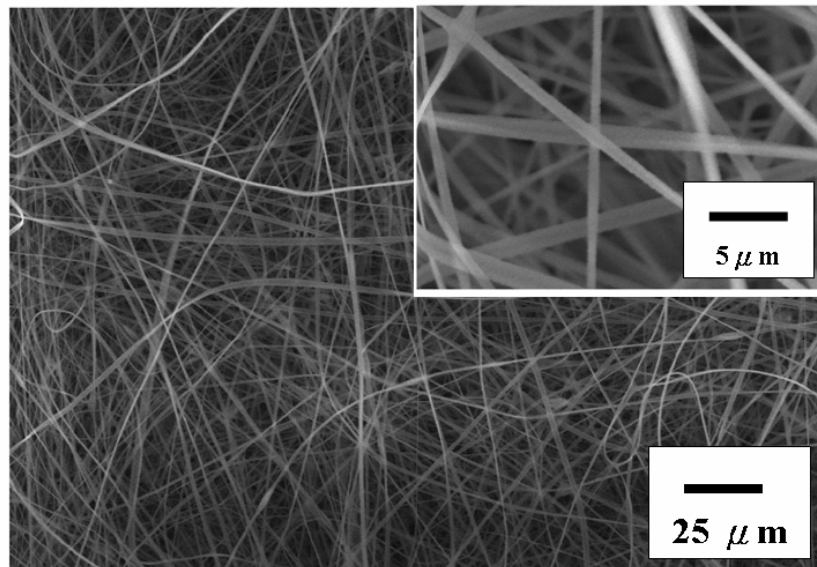
\*Author to whom all correspondence should be addressed

Tel: 886-2-23628398

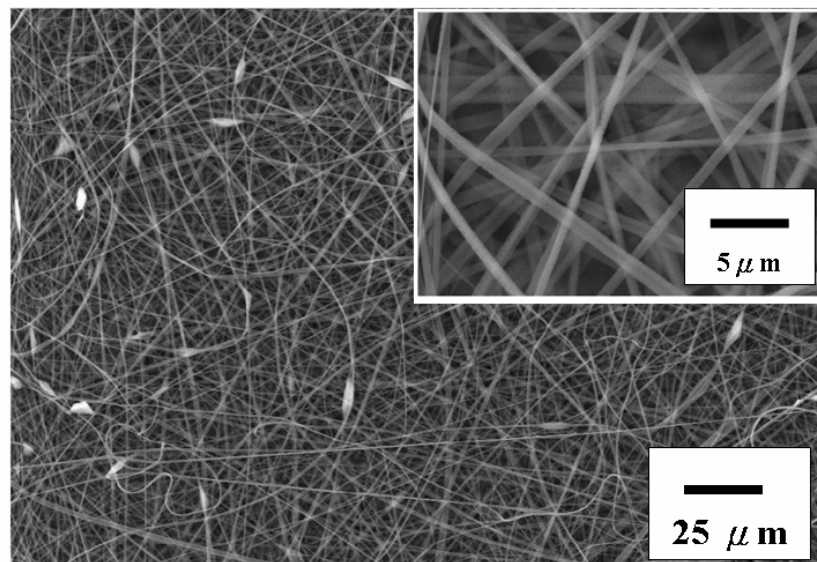
Fax: 886-2-23623040

Email: [chenwc@ntu.edu.tw](mailto:chenwc@ntu.edu.tw)

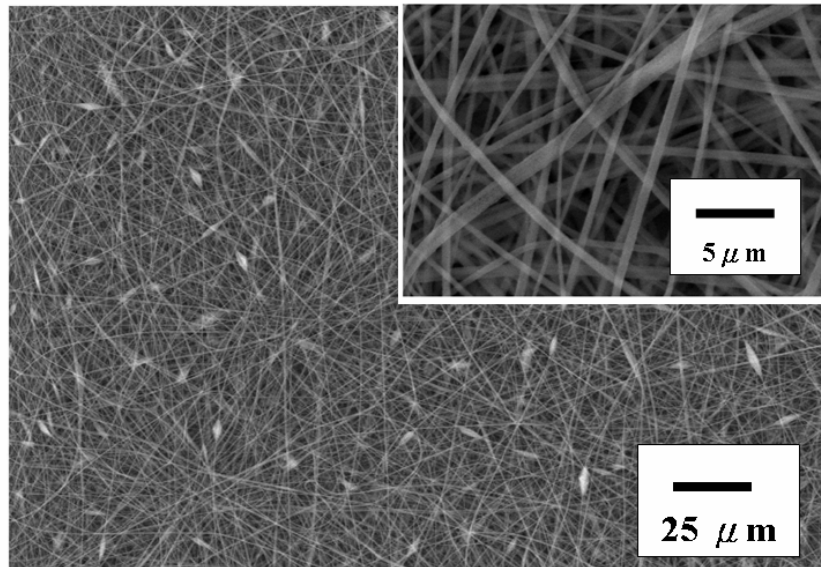
**S1(a)**



**S1(b)**

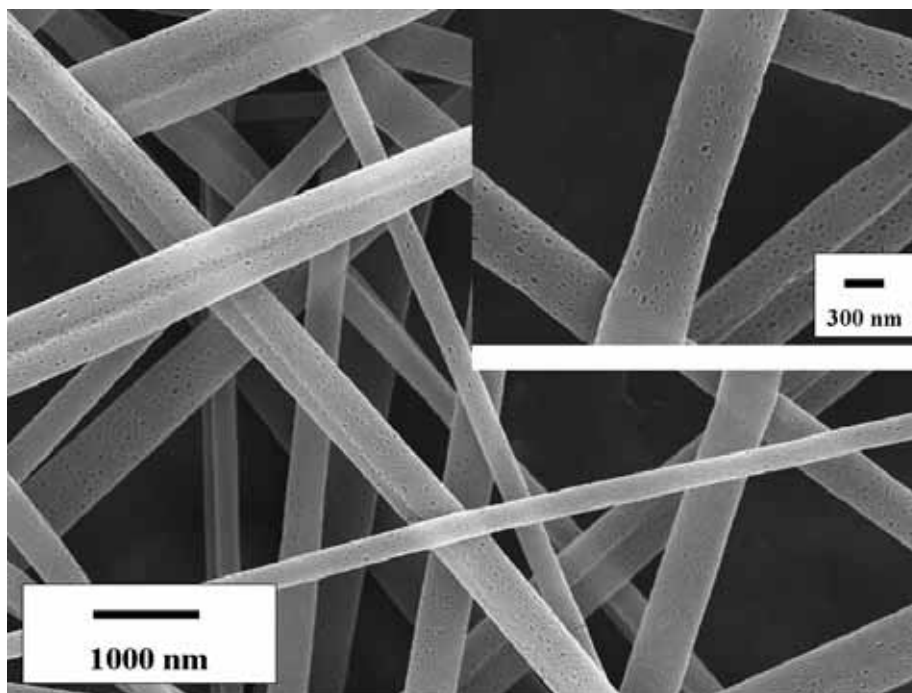


**S1(c)**

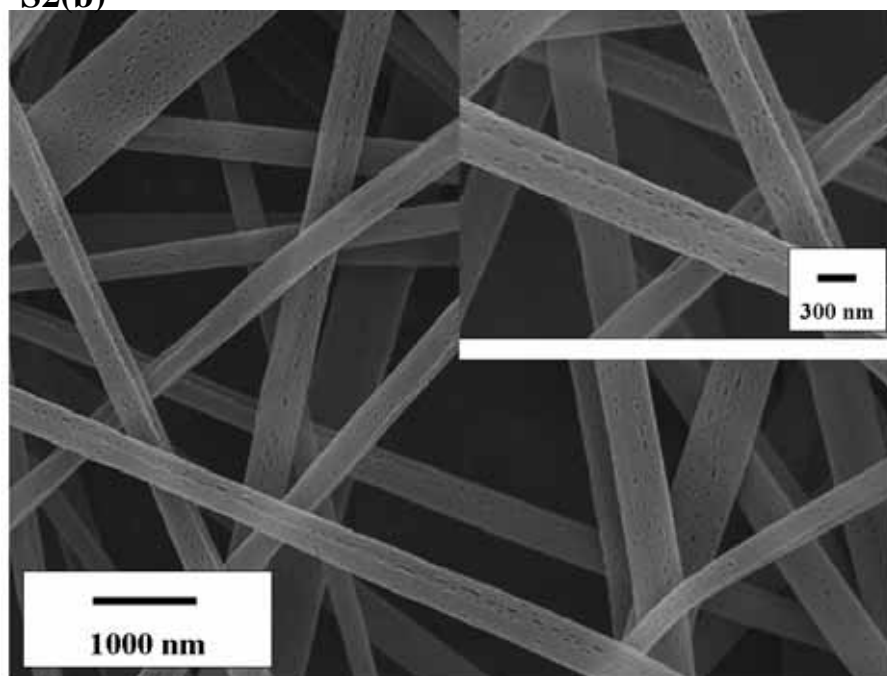


**Figure S1. FE-SEM images of PFO/PMMA blend ES fibers: (a) 1 wt% PFO; (b) 30 wt% PFO; (c) 50wt% PFO.**

**S2(a)**

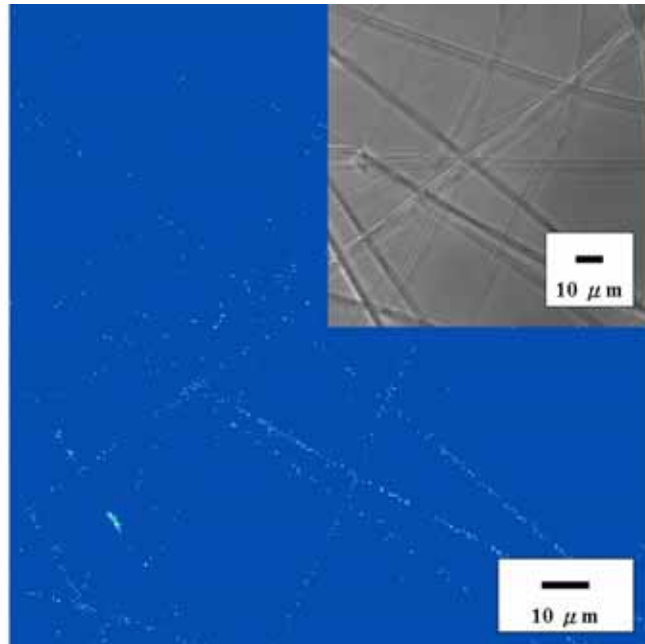


**S2(b)**

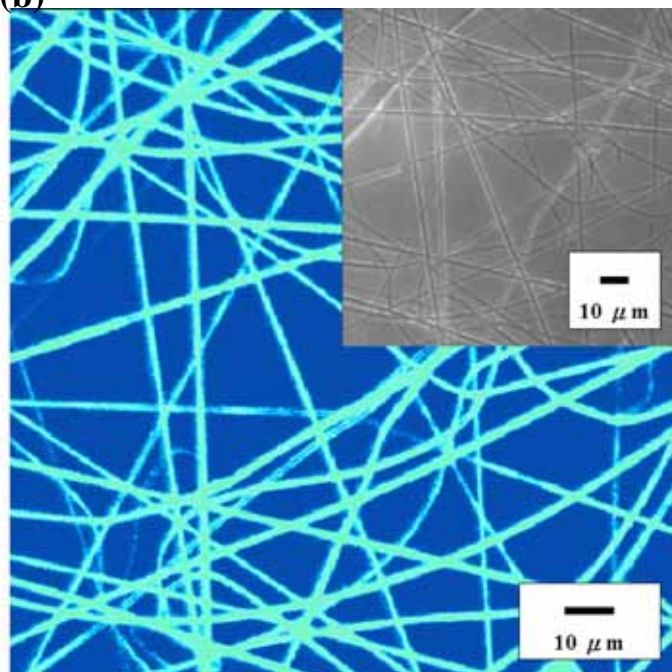


**Figure S2.** FE-SEM images of PFO/PMMA blend ES nanofibers with (a) 1 wt% and (b) 30 wt % of PFO.

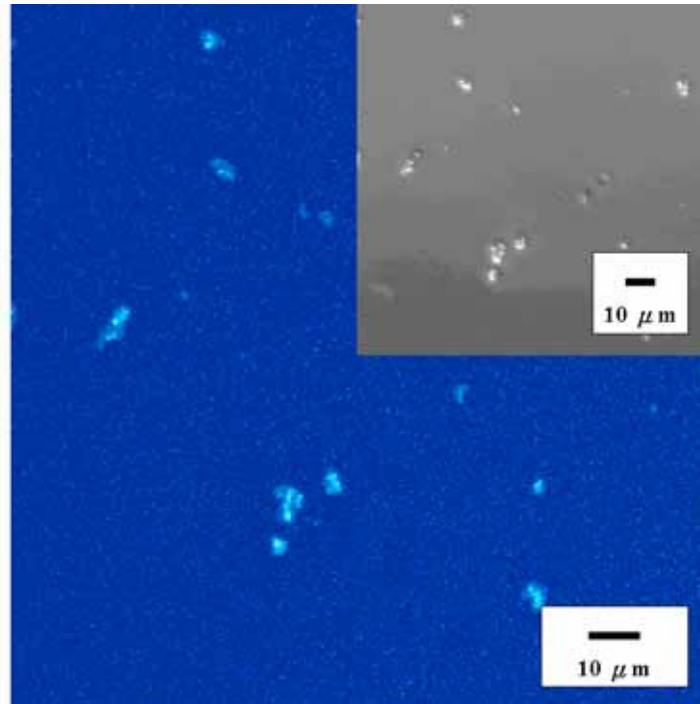
**S3(a)**



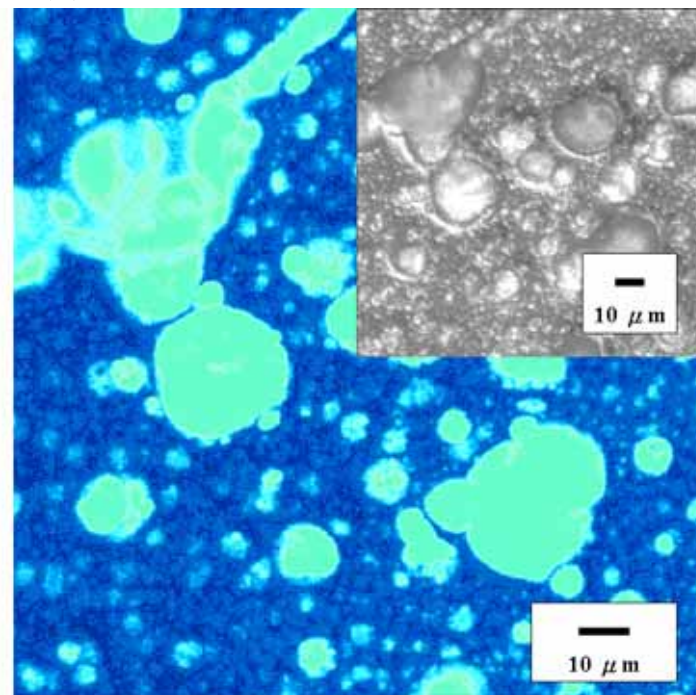
**S3(b)**



**S3(c)**



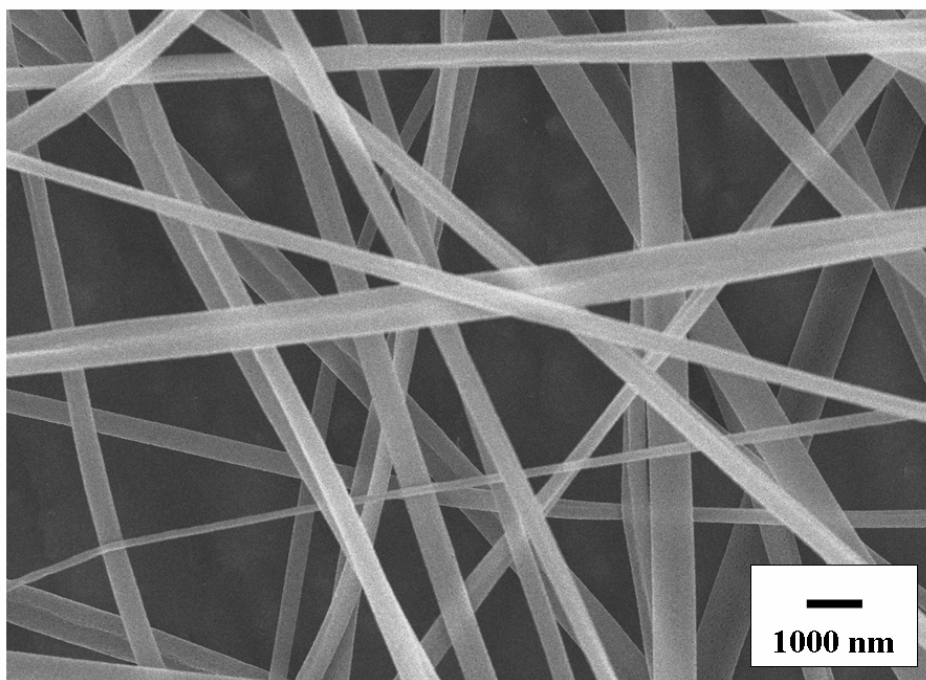
**S3(d)**



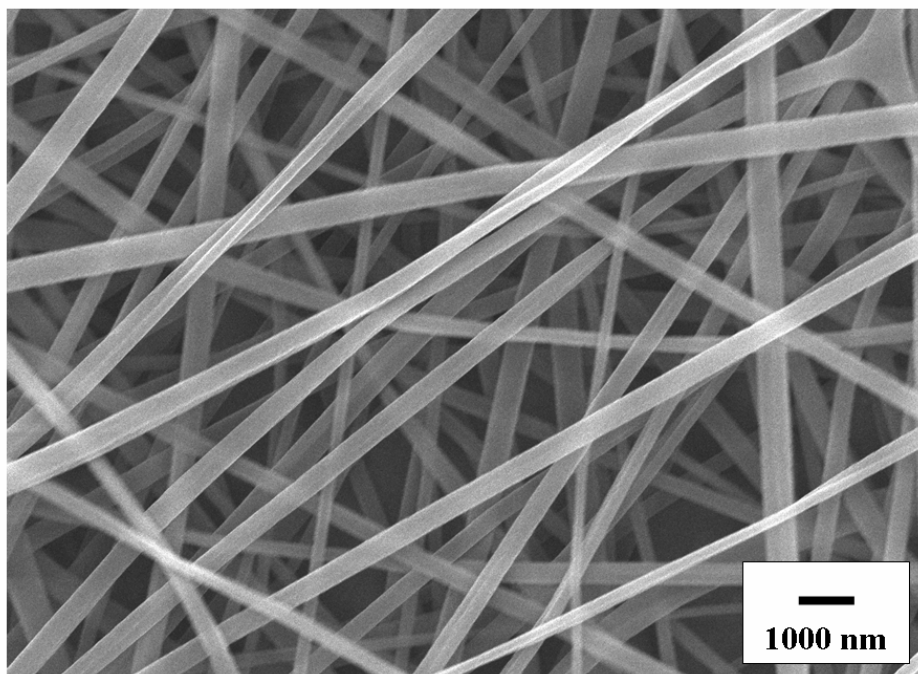
**Figure S3. Laser confocal microscope images of (a)1 and (b)50 wt% PFO ES fibers and the corresponding spin-coated films (c) and (d). The insert shows the optical images of the above ES fibers and spin-coated films.**



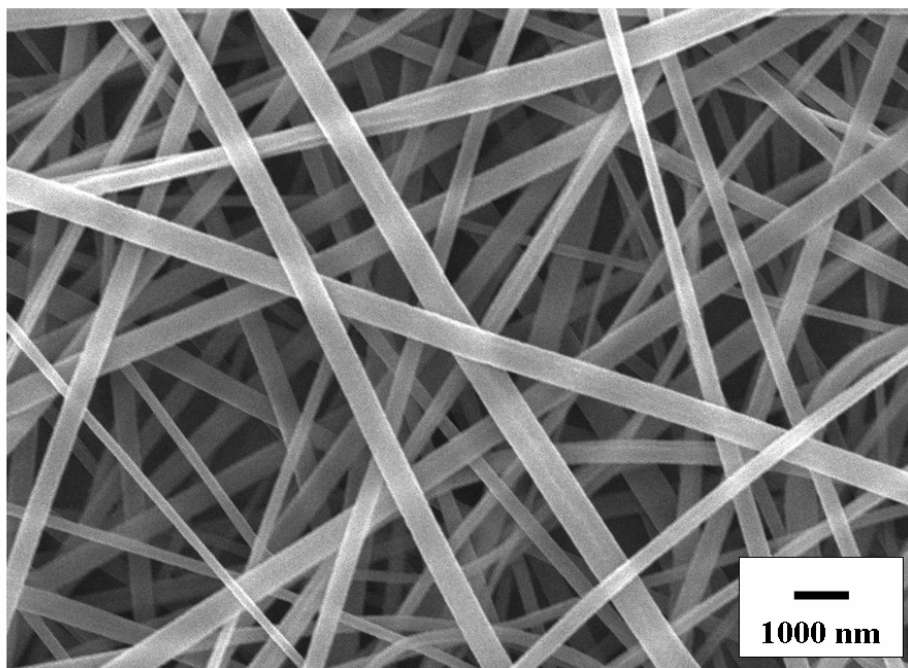
**S4(a)**



**S4(b)**



**S4(c)**



**Figure S4. FE-SEM images of the polyfluorene derivative/PMMA ES fibers: (a) PFQ/PMMA, (b) PFBT/PMMA, and (c) PFTP/PMMA.**