

# Supporting Information for:

## Understanding a Degradation Mechanism of Direct Methanol Fuel Cell using TOF-SIMS and XPS

Youngsu Chung<sup>†\*</sup>, Chanho Pak<sup>‡\*</sup>, Gyeong-Su Park<sup>†</sup>, Woo Sung Jeon<sup>†</sup>, Ji-Rae Kim<sup>‡</sup>, Yoon-Hoi Lee<sup>‡</sup>,  
Hyuk Chang<sup>‡</sup> and Doyoung Seung<sup>‡</sup>

Analytical Engineering Center and Energy and Materials Research Laboratory, Samsung Advanced  
Institute of Technology, P. O. Box 111, Suwon, 440-600,

### SEM images

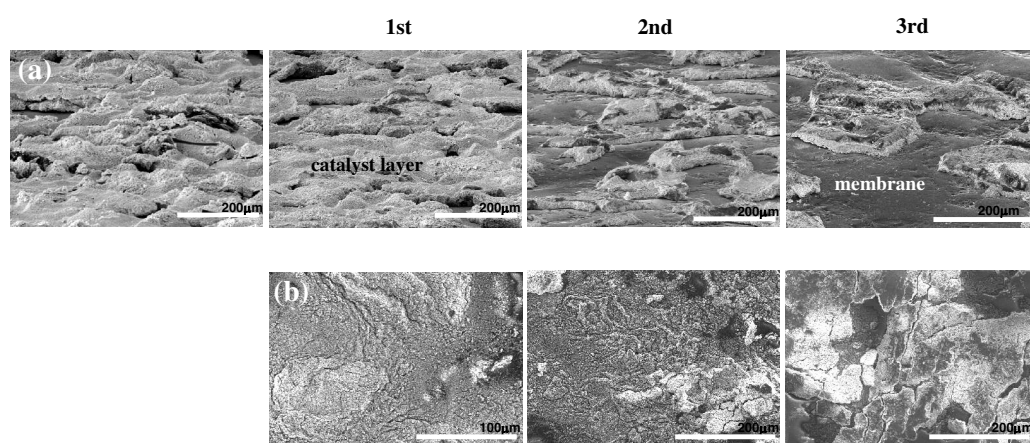


Figure S1. (a) The tilted SEM images of exposed cathode catalyst layer after each peel-off and (b) the top views of detached layers on 3M tape.

Formatted: Font: 12 pt, Not Bold,  
(Asian) Korean