

## SUPPLEMENTAL INFORMATION

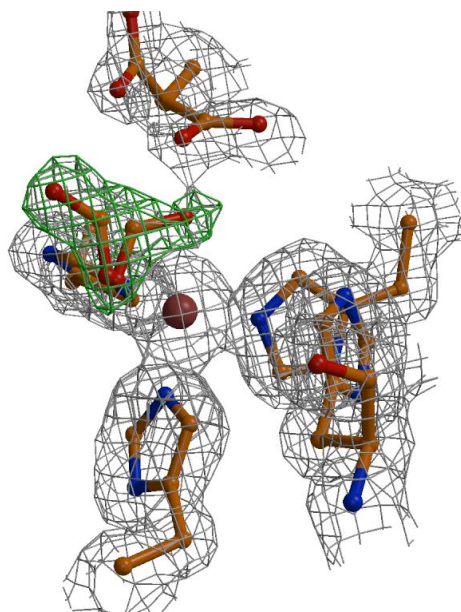


Figure S1. Formate-bound AfNiR subunits B and C show disorder of both formate and Asp98.  $F_o-F_c$  difference map is shown in green and contoured at  $4\sigma$ . The  $2F_o-F_c$  map is colored in gray and contoured at  $1\sigma$ .

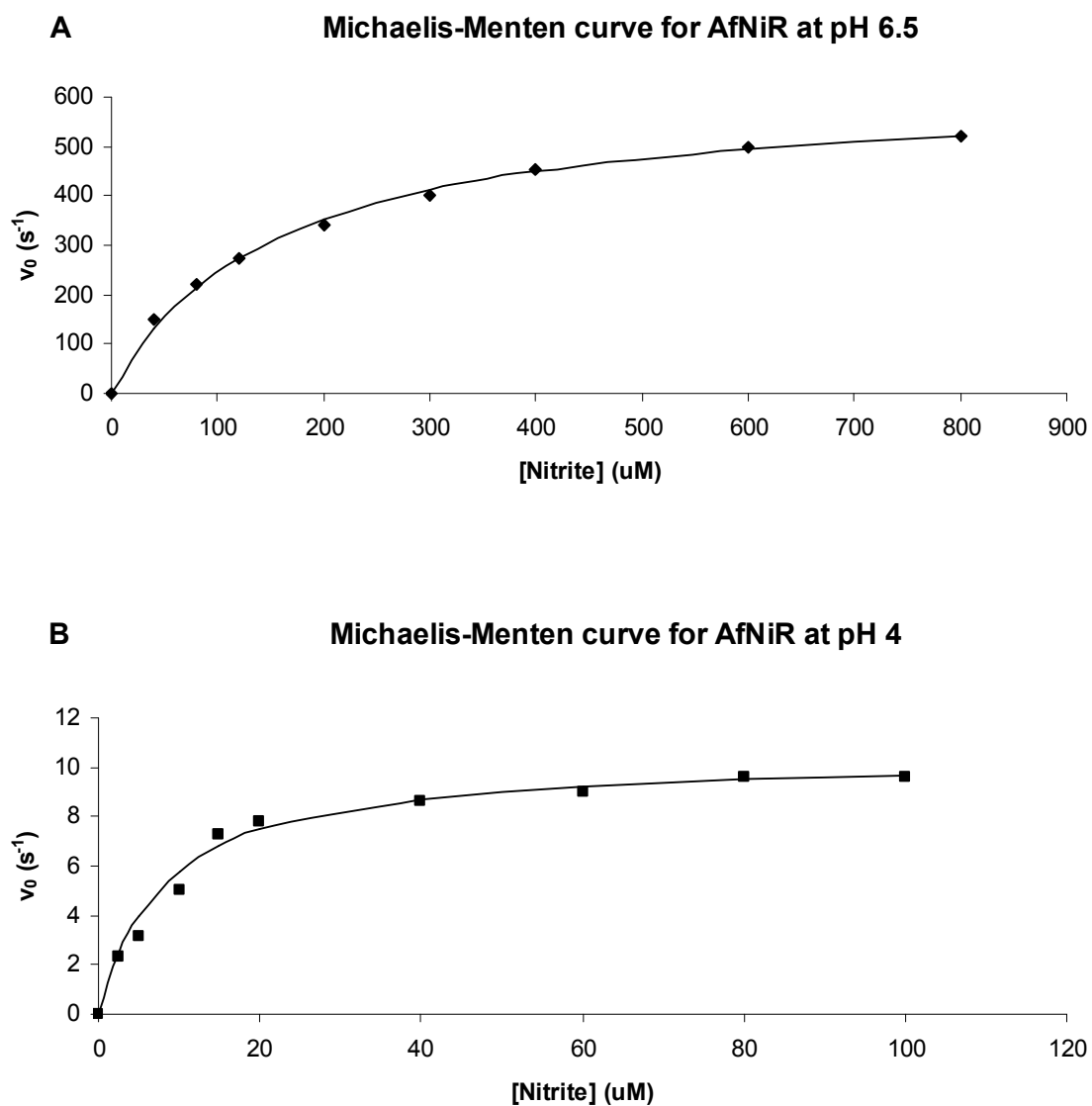


Figure S2. Steady-state turnover of AfNiR at pH 6.5 (A) and pH 4 (B). Initial rates were based on pseudoazurin oxidation. The curves represent the fit of the Michaelis-Menten equation to the data (squares).