

Supporting Information

Direct Vinylation and Difluorovinylation Of Arylboronic Acids using Vinyl- and 2,2-Difluorovinyl Tosylates via the Suzuki-Miyaura Cross Coupling

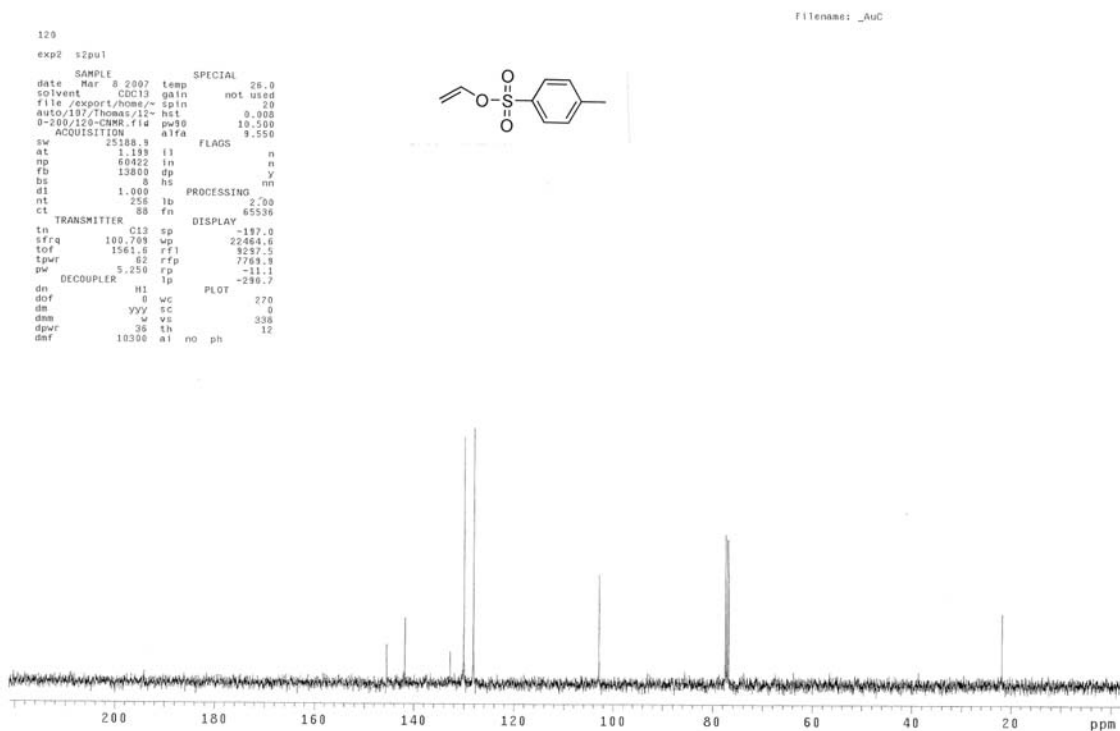
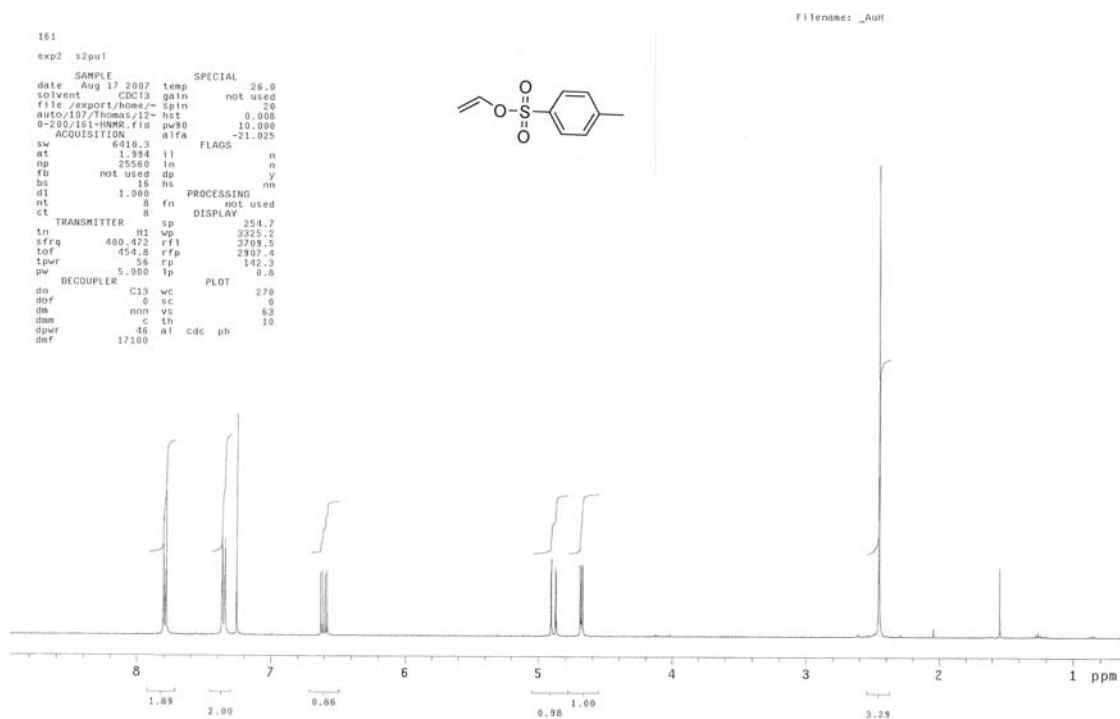
*Thomas M. Gøgsig, Lina S. Søbjerger, Anders T. Lindhardt (né Hansen), Kim L. Jensen and
Troels Skrydstup**

The Center for Insoluble Protein Structures (inSPIN), Department of Chemistry and the
Interdisciplinary Nanoscience Center, University of Aarhus, Langelandsgade 140,
8000 Aarhus C, Denmark

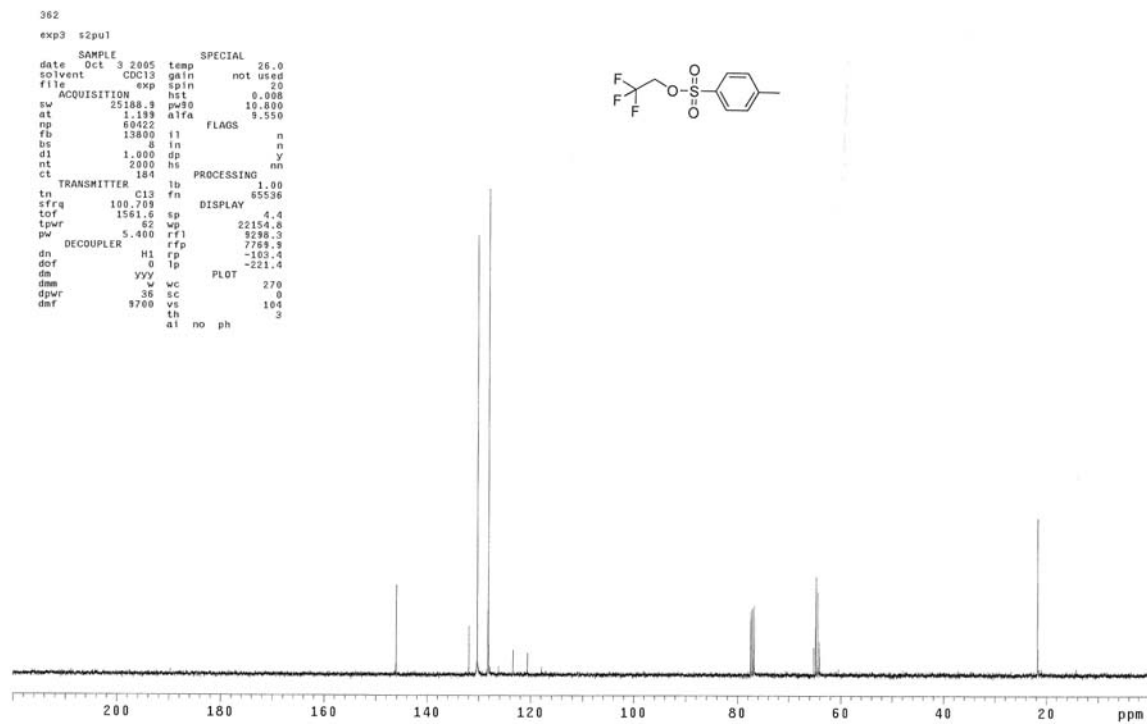
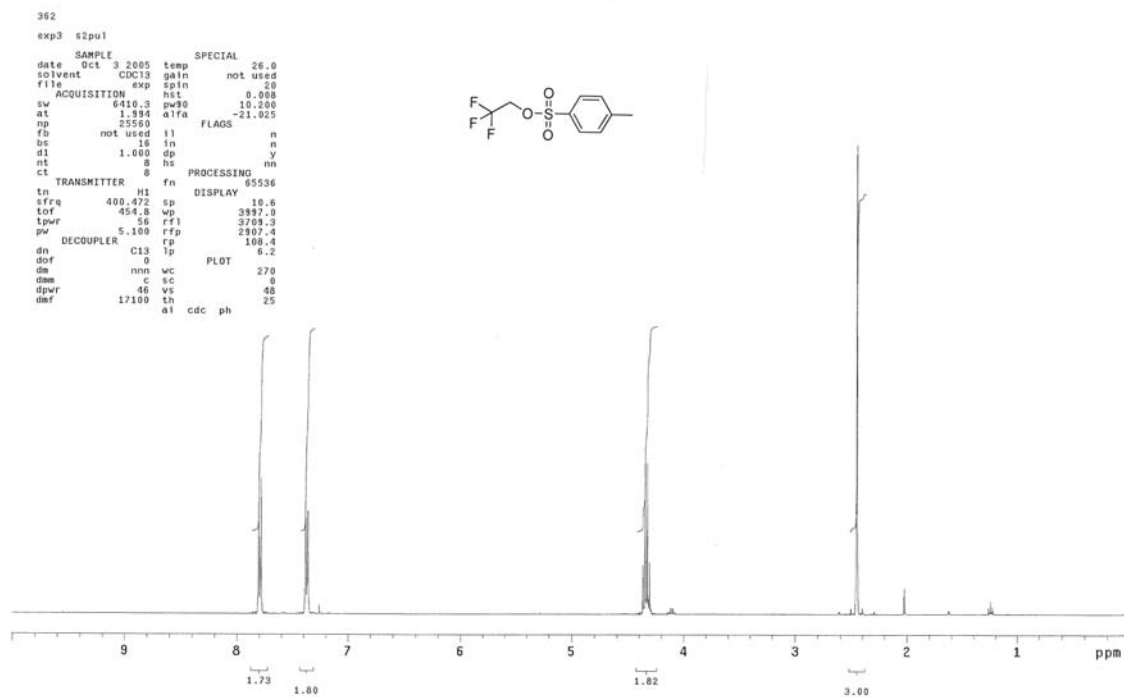
ts@chem.au.dk

Table of Contents	1
NMR Spectra for compounds 2 and 17	2
NMR Spectra for Table 2	7
NMR Spectra for Table 3	10

Compound 2



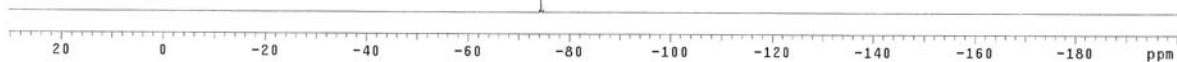
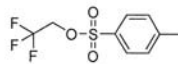
2,2,2-Trifluoroethyl tosylate



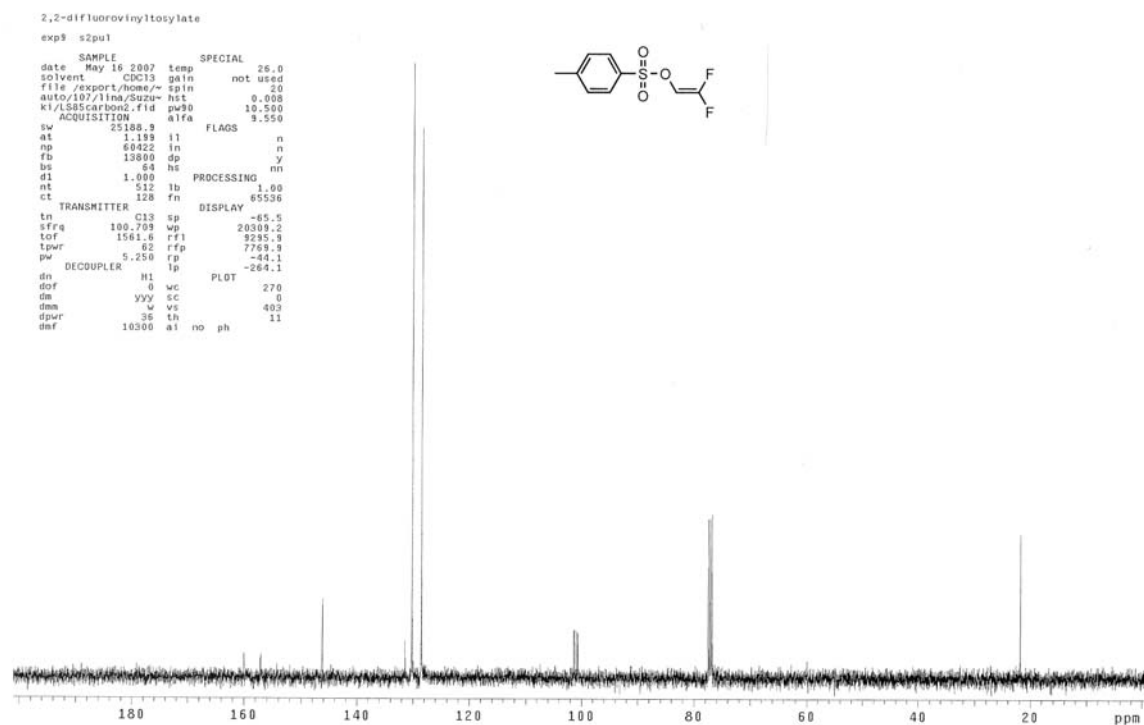
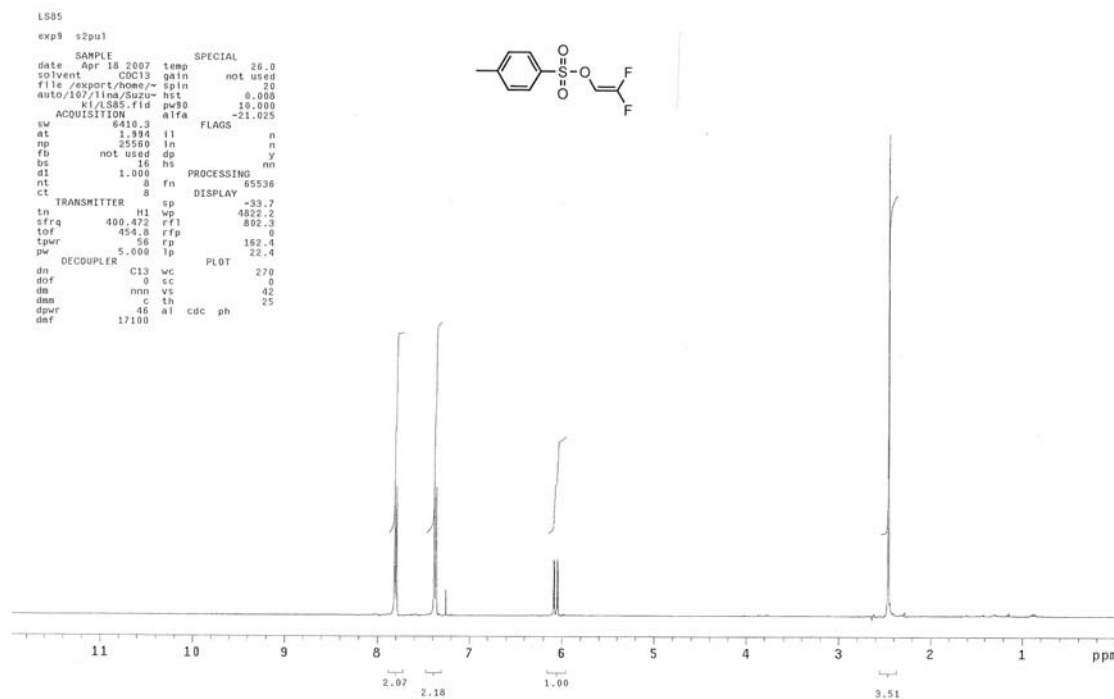
362

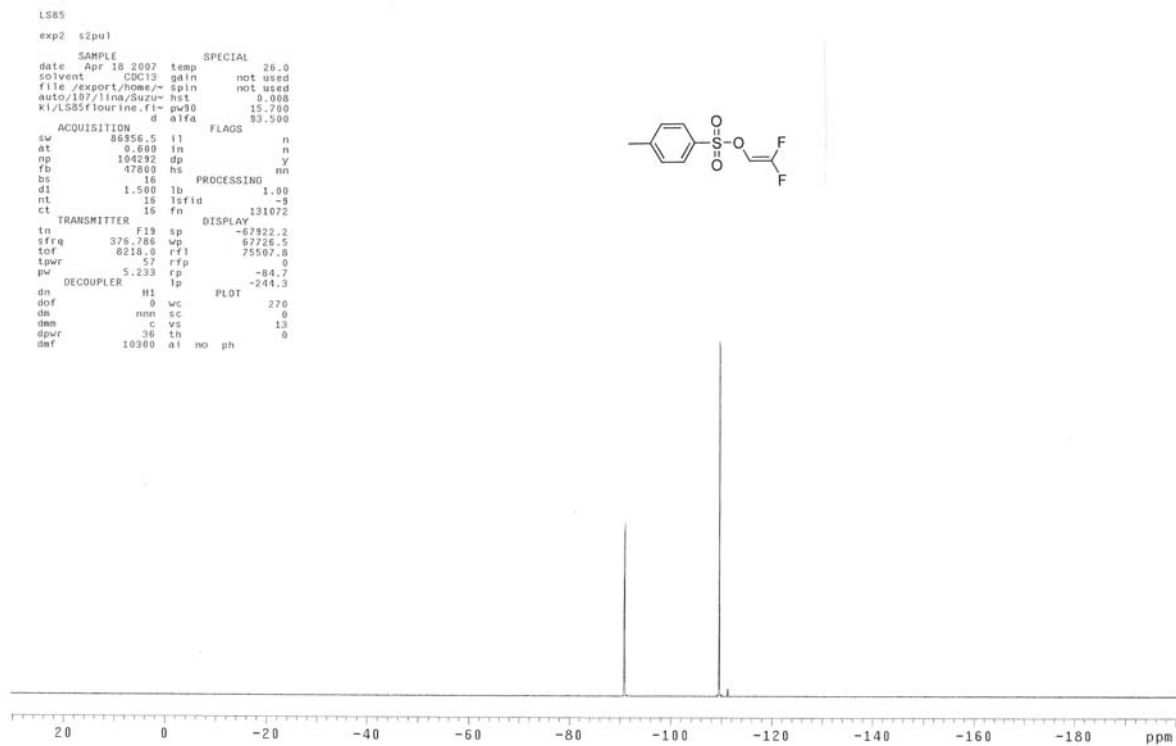
exp3 s2pu1

SAMPLE		SPECIAL	
date	Oct 3 2005	temp	26.0
solvent	CDCl3	gain	not used
file	exp	spin	not used
ACQUISITION		hst	0.000
sw	86956.5	pw90	15.790
at	0.600	alfa	93.500
np	104292	FLAGS	
fb	47800	l1	n
bs	16	in	n
d1	1.500	dp	y
nt	16	hs	nn
ct	16		
TRANSMITTER		tb	1.00
tn	f19	lsfid	-9
rfra	376.786	fn	131072
tof	8218.0	DISPLAY	
tpwr	57	sp	-75506.5
pw	5.233	wp	86955.2
DECOUPLER		rf1	75507.8
dn	H1	rfp	0
dof	0	rp	-79.6
dm	nnn	lp	0.0
dma	C		
dpwr	36	wc	270
dmf	9700	sc	0
		vs	2
		th	65
		al	no ph

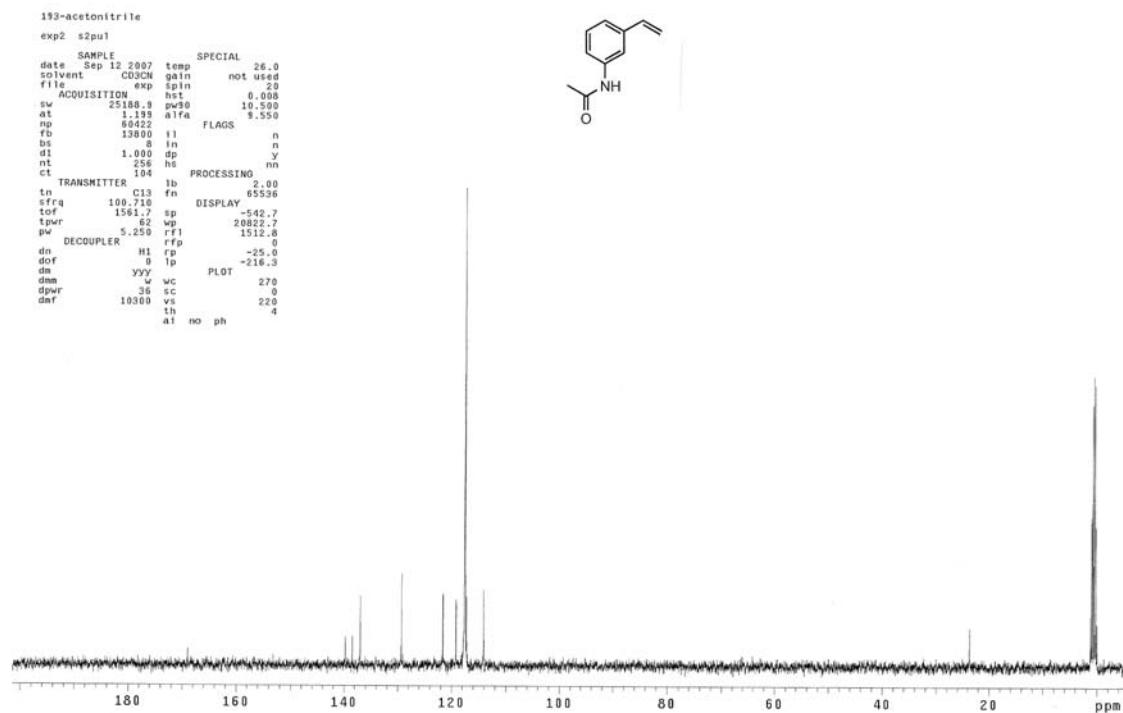


Compound 17

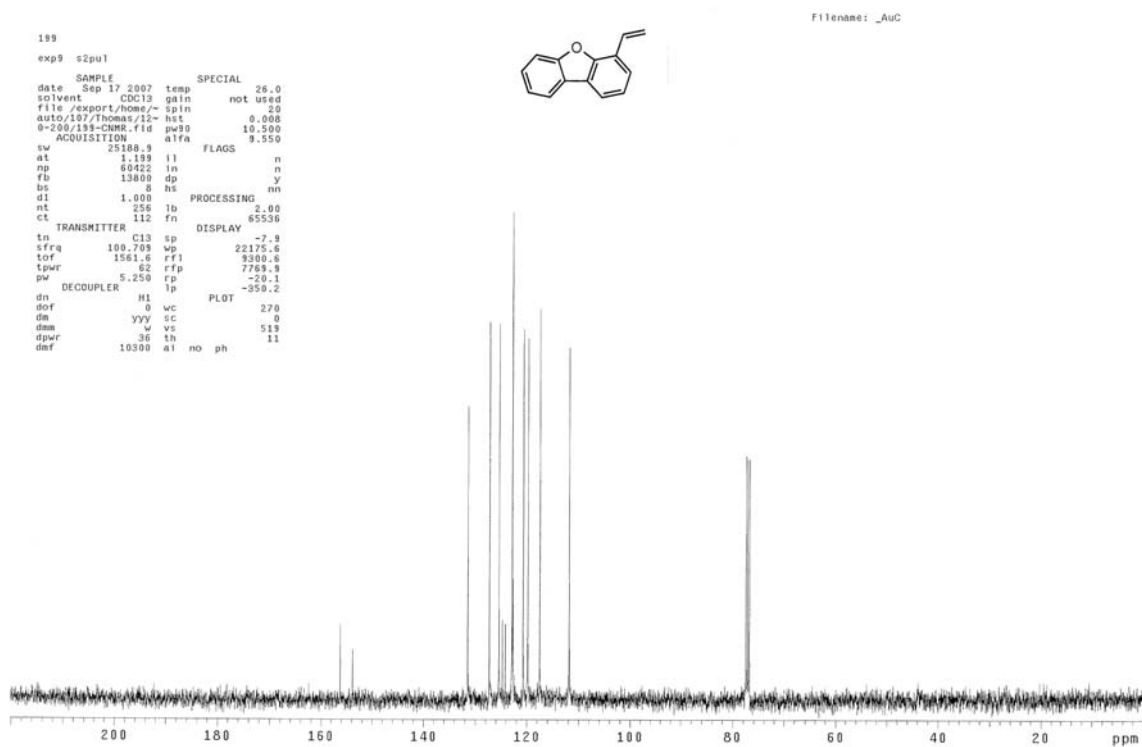
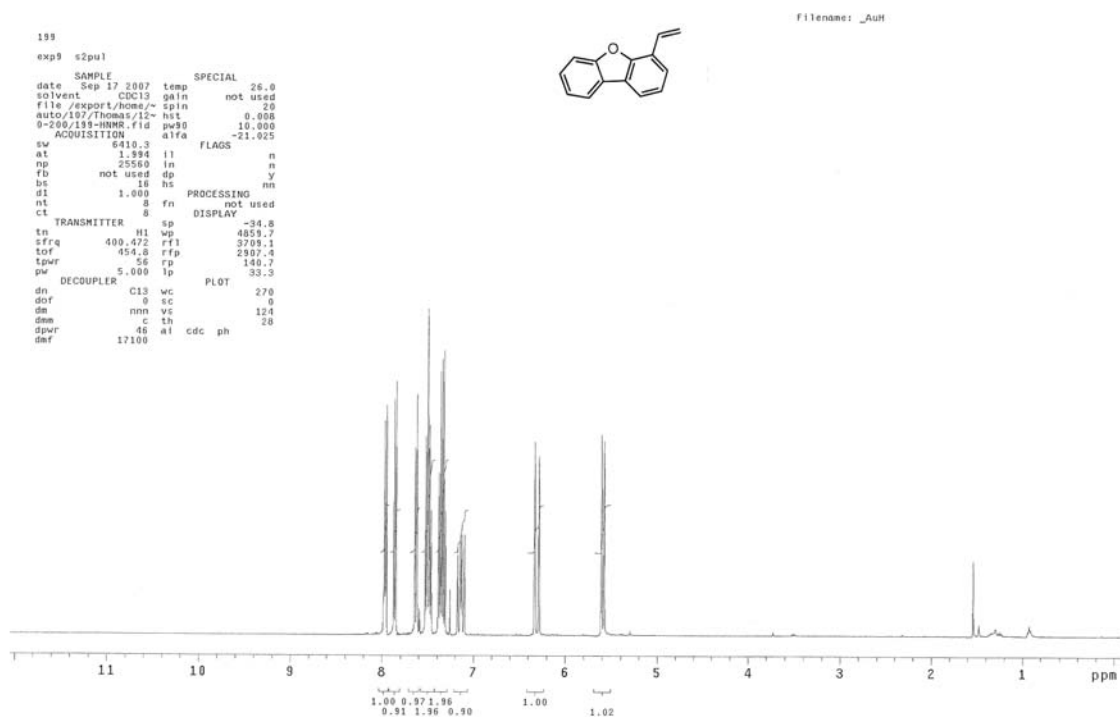




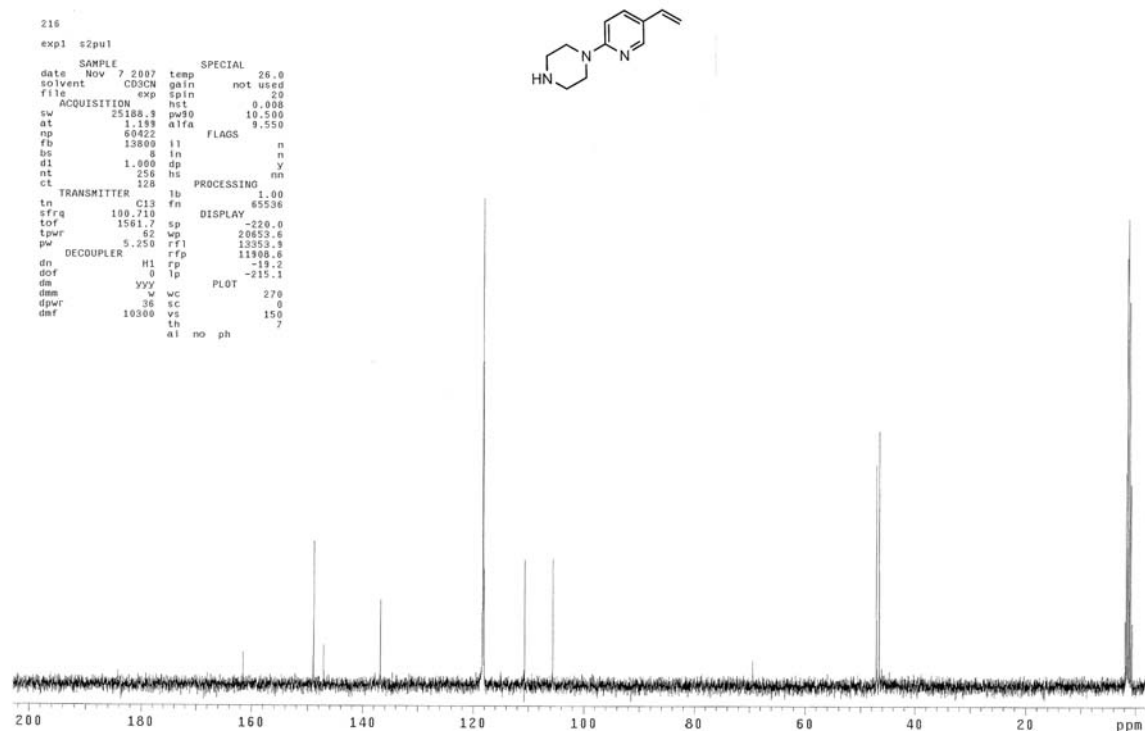
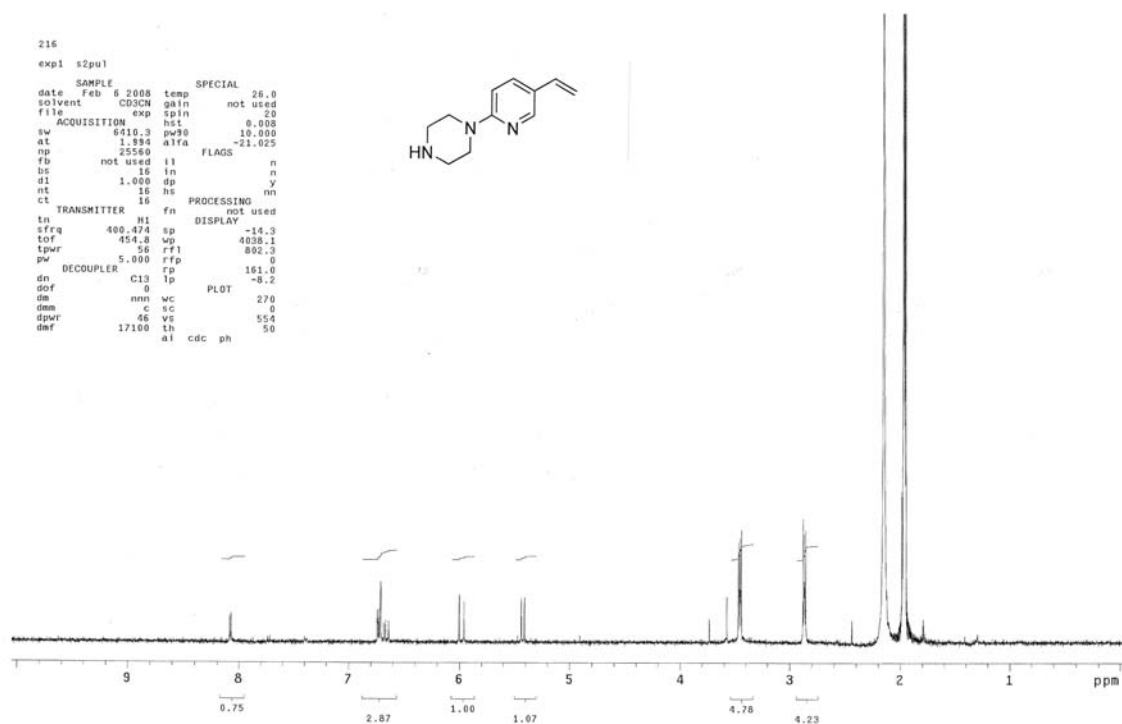
Compound 8



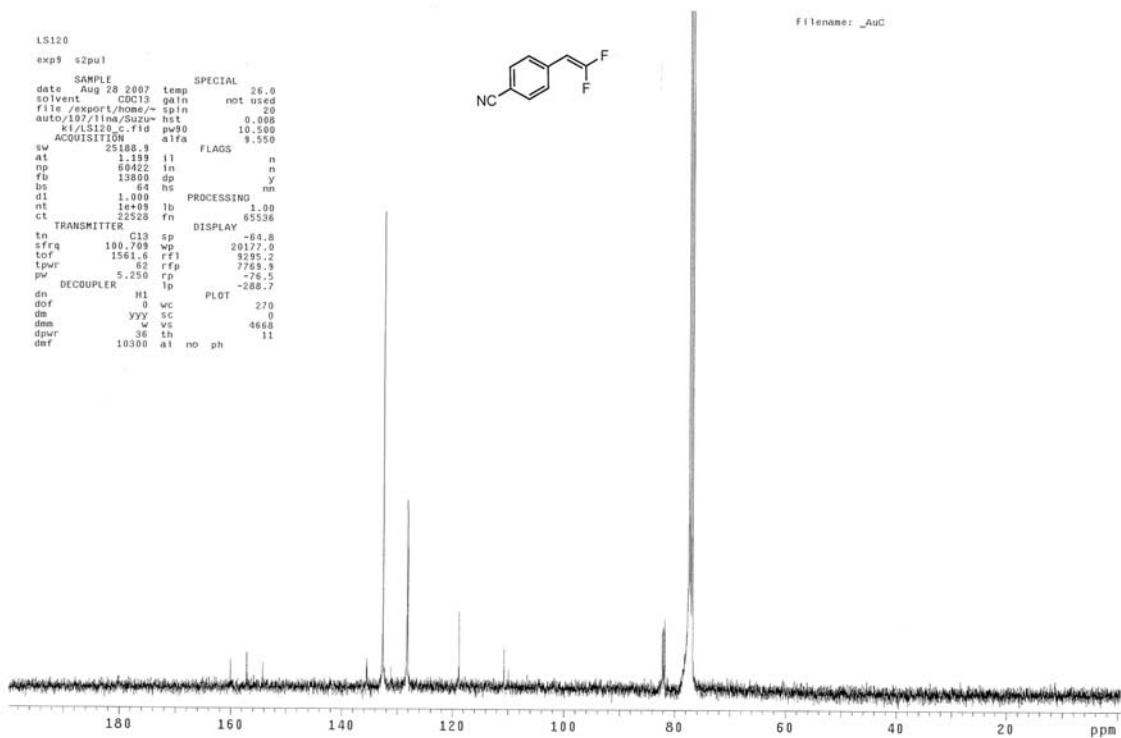
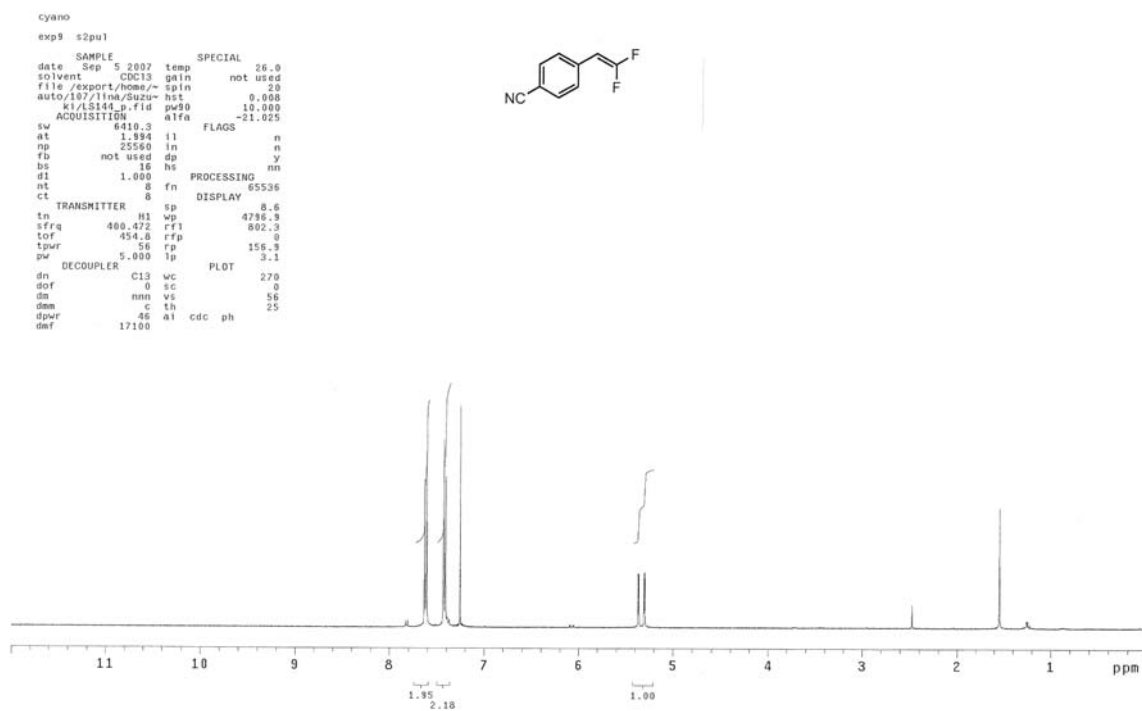
Compound 4

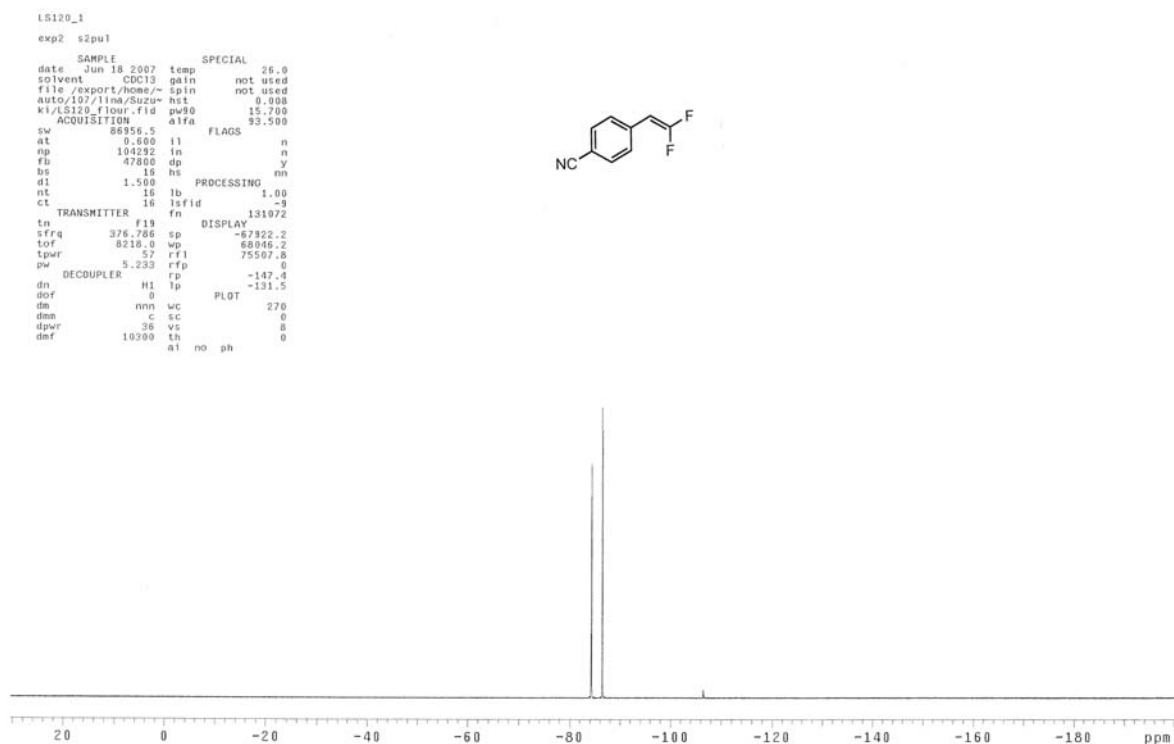


Compound 13

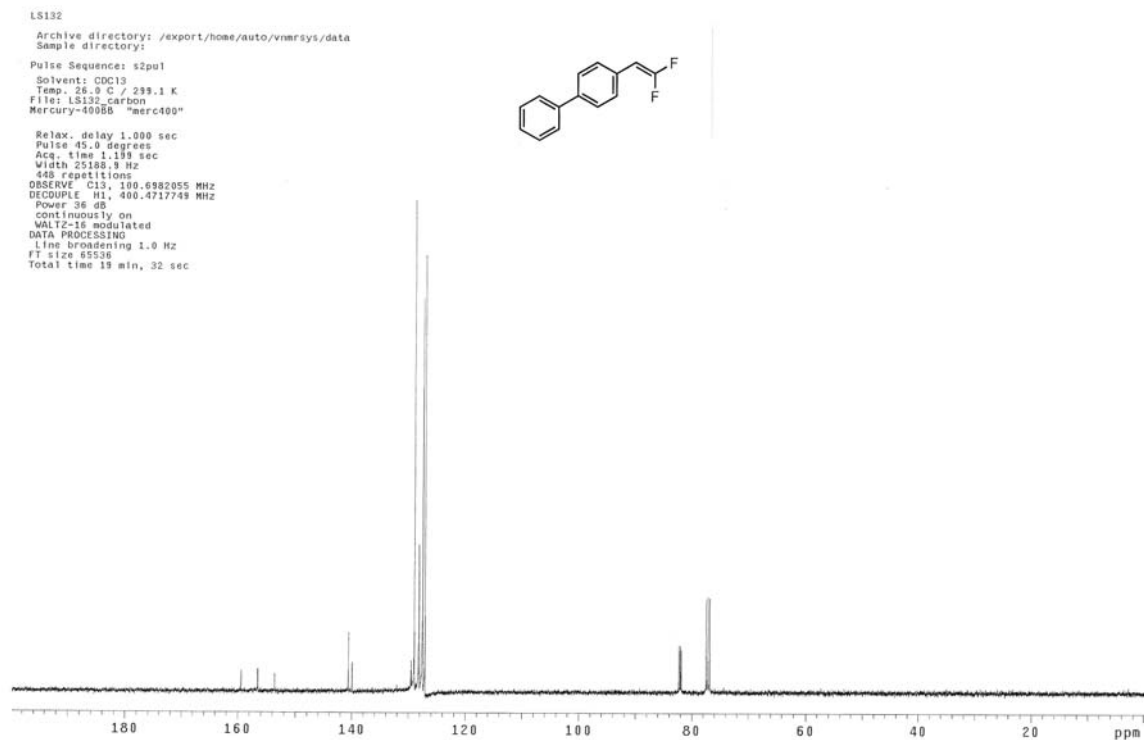
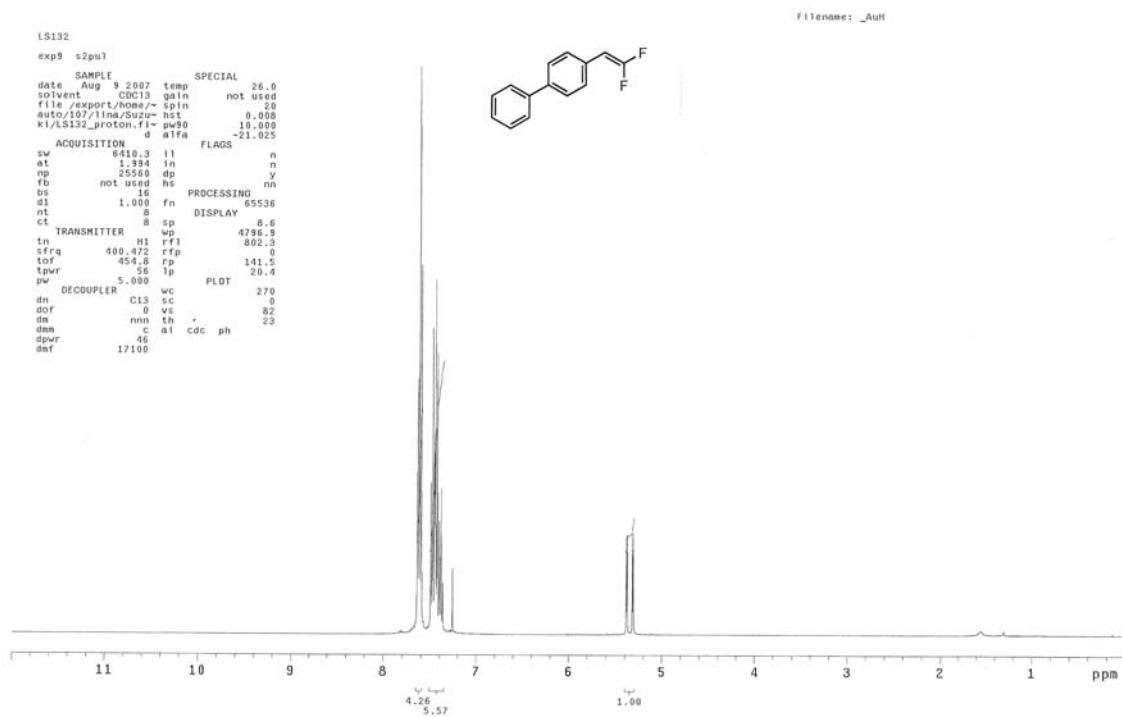


Compound 18



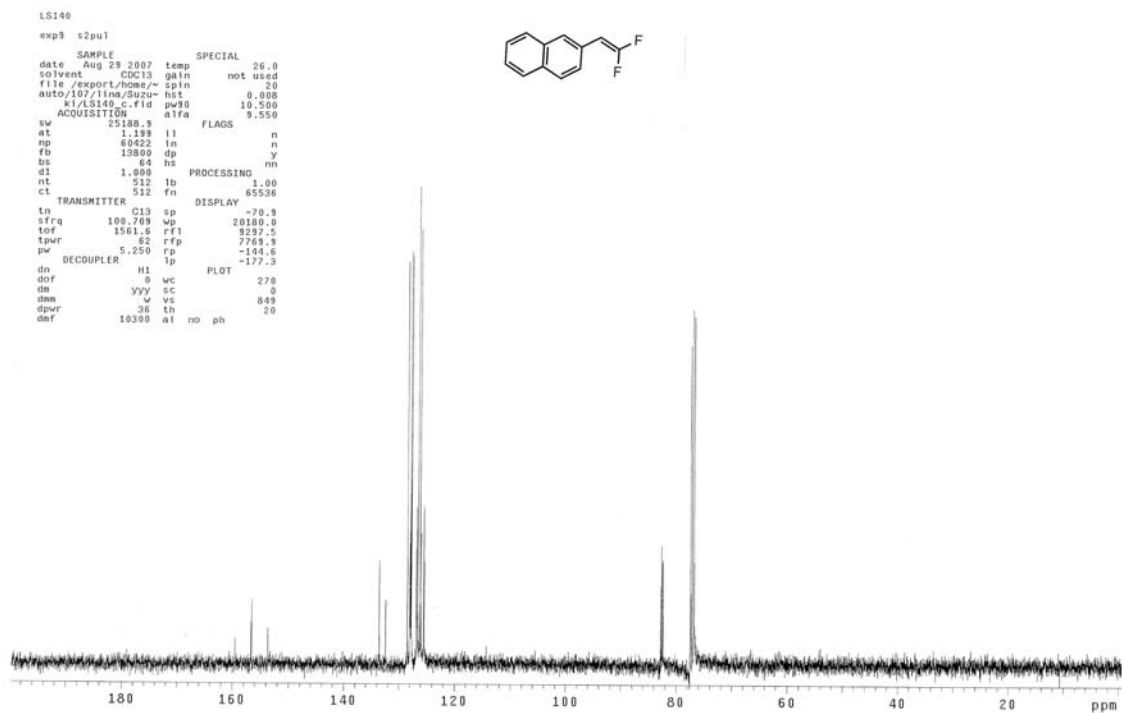
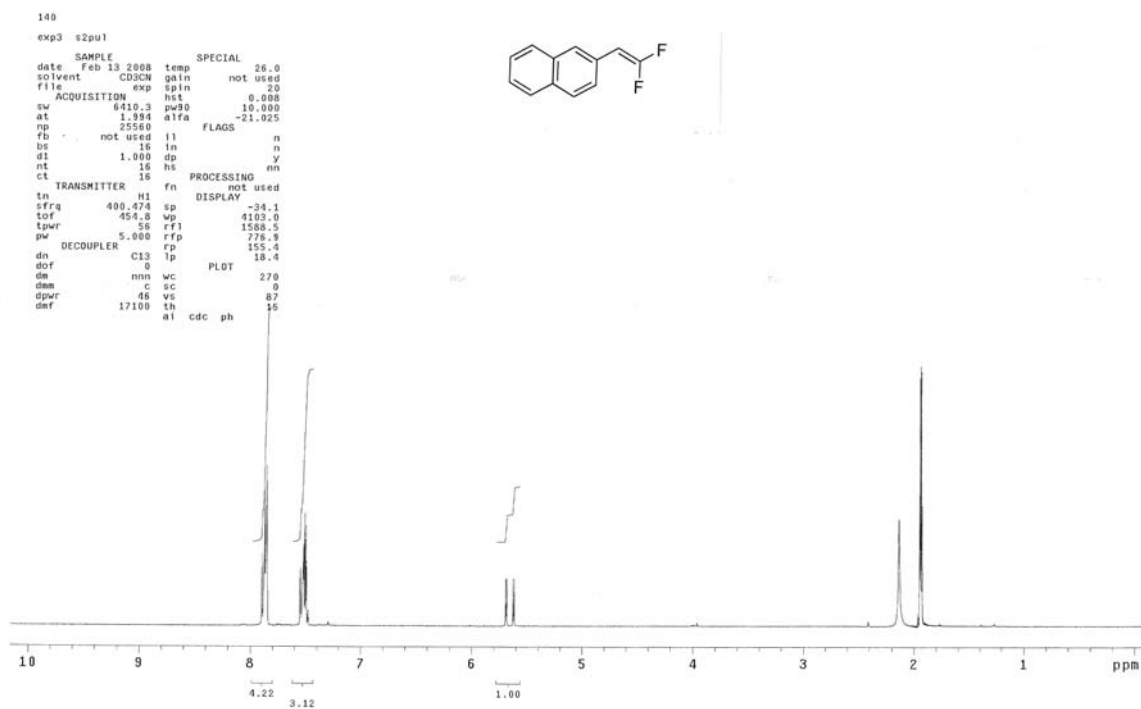


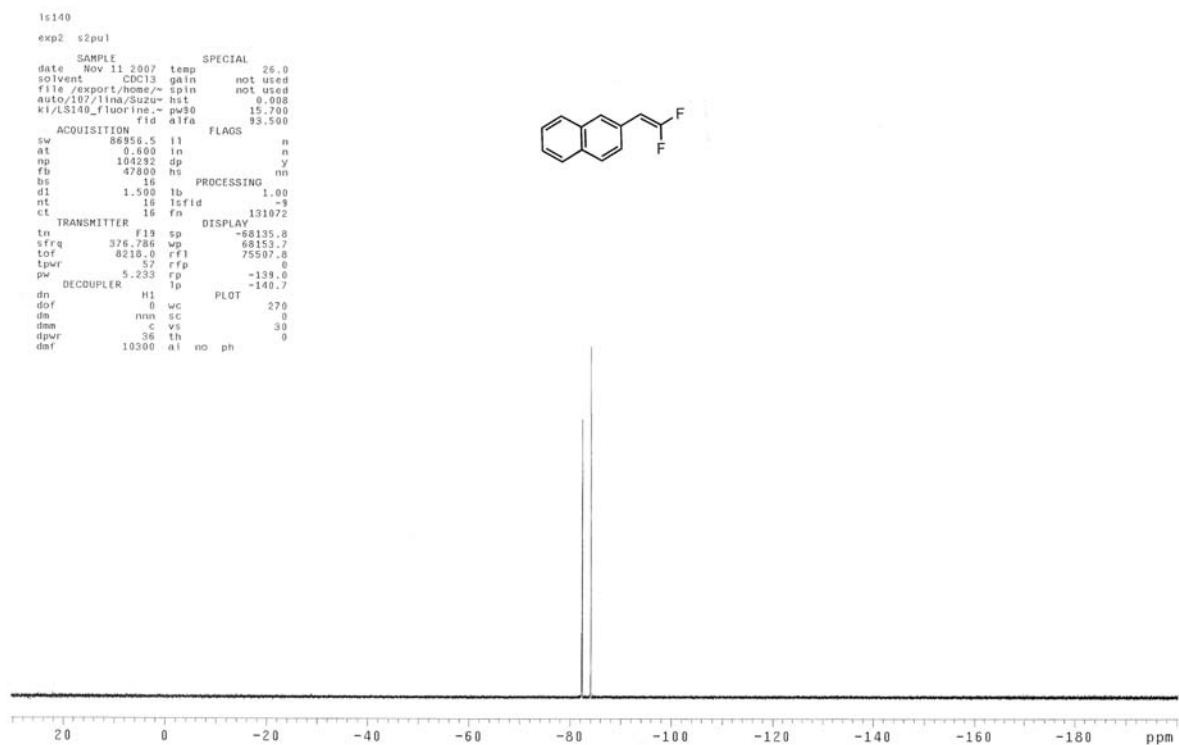
Compound 19



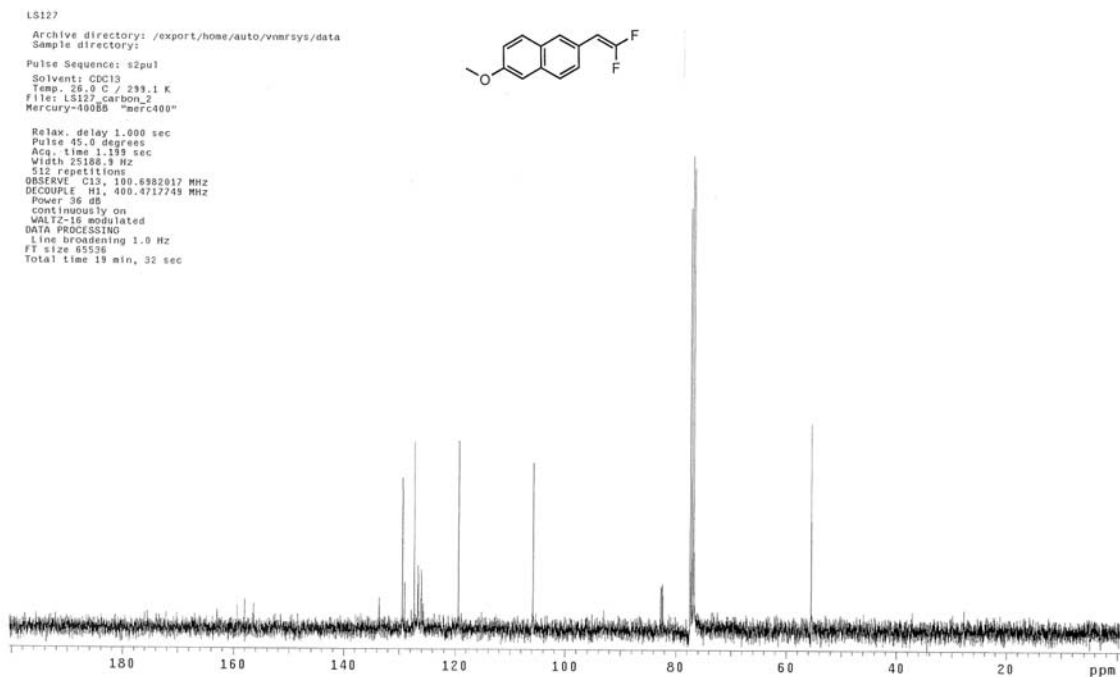
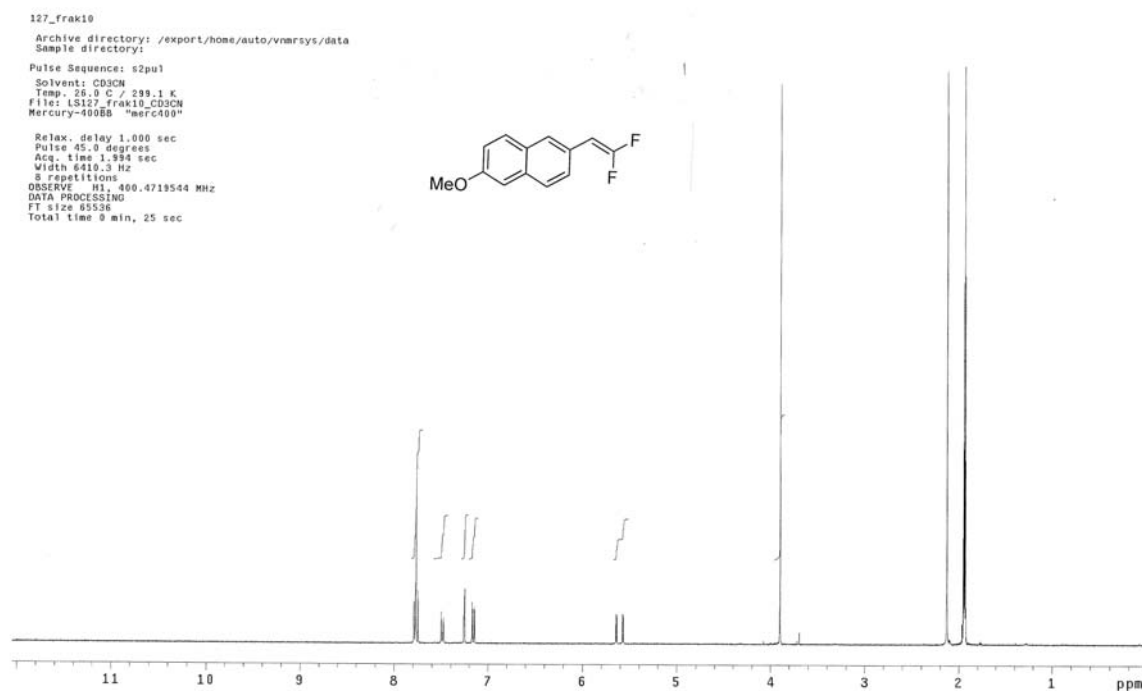


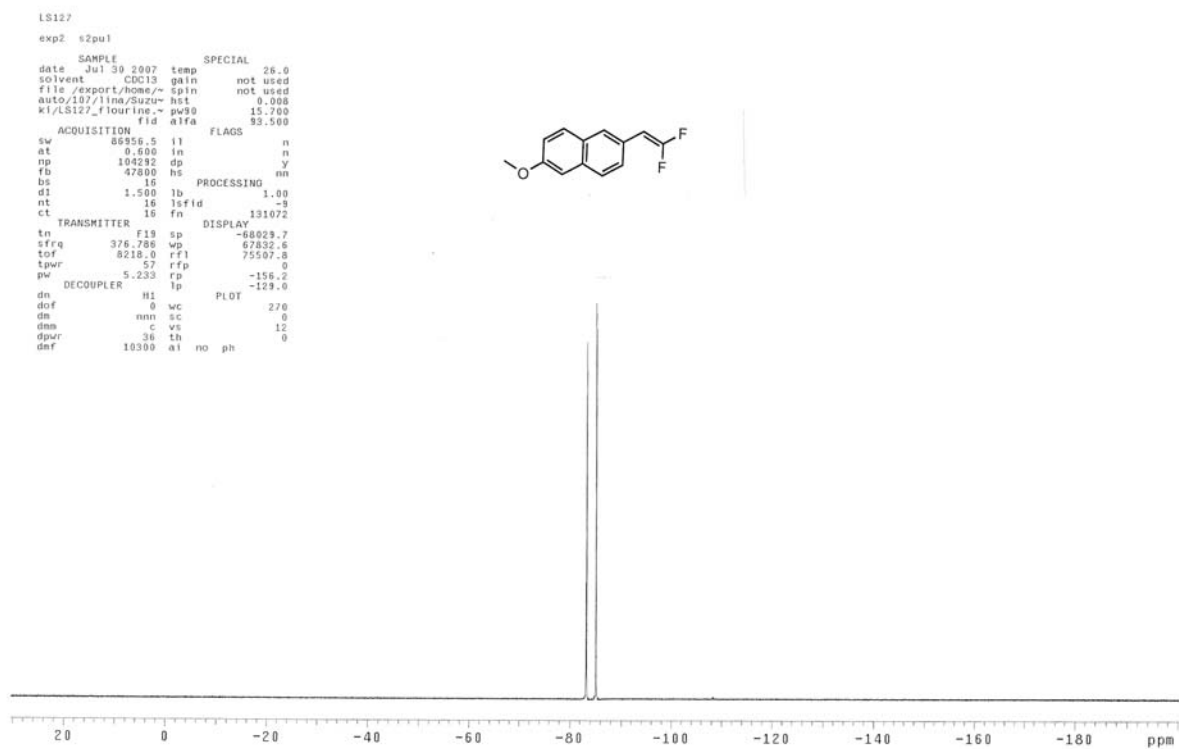
Compound 20



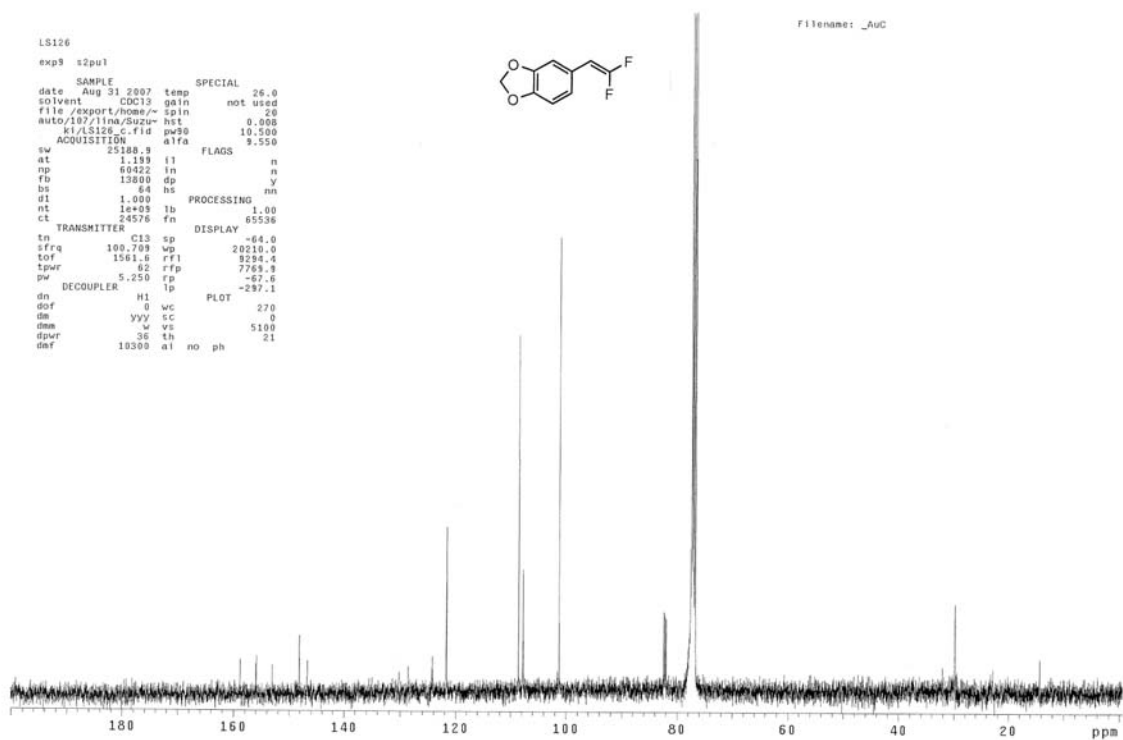
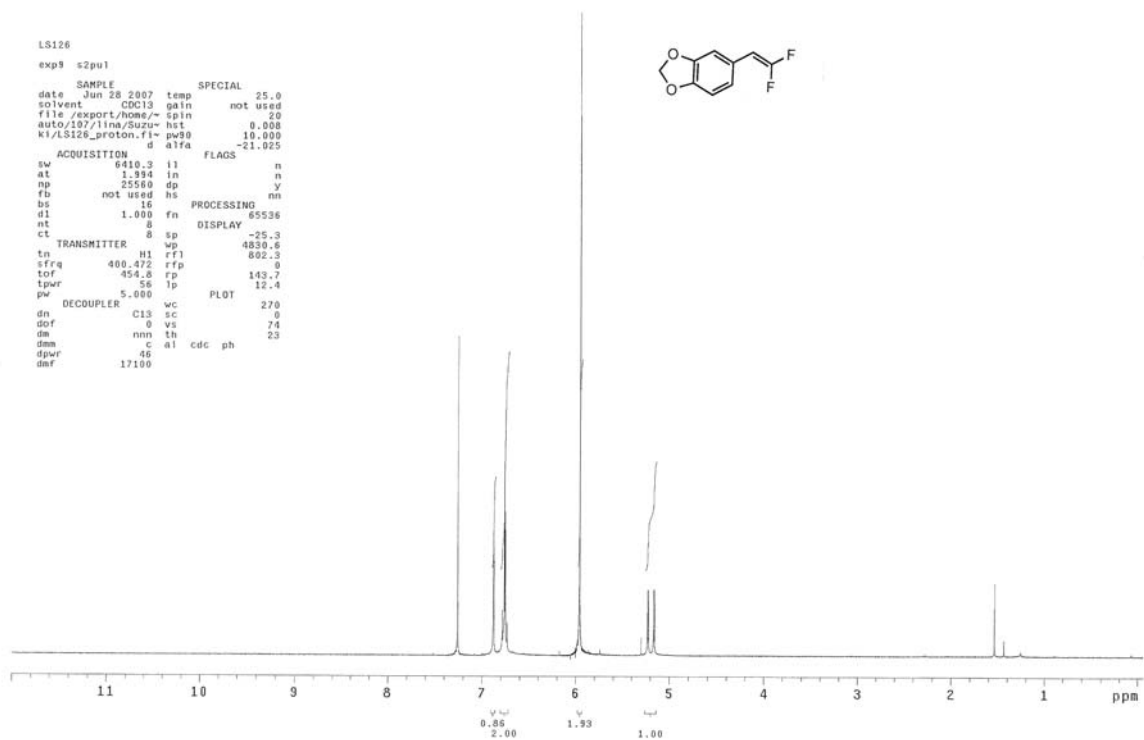


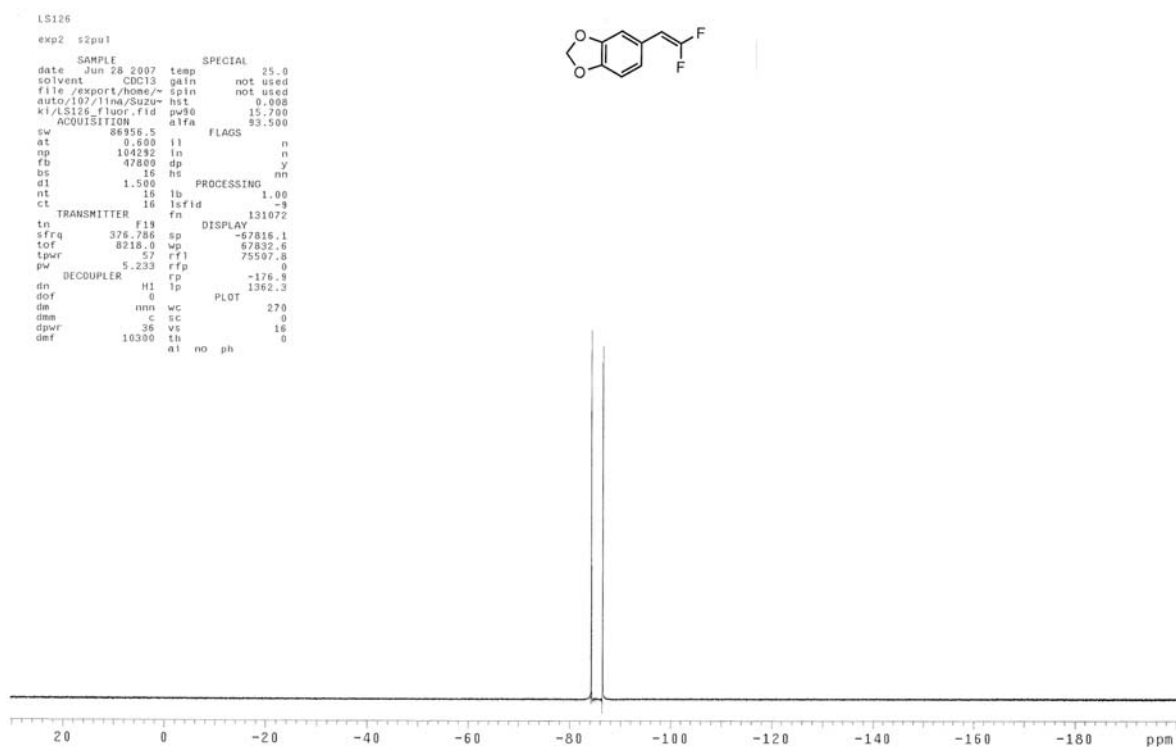
Compound 21



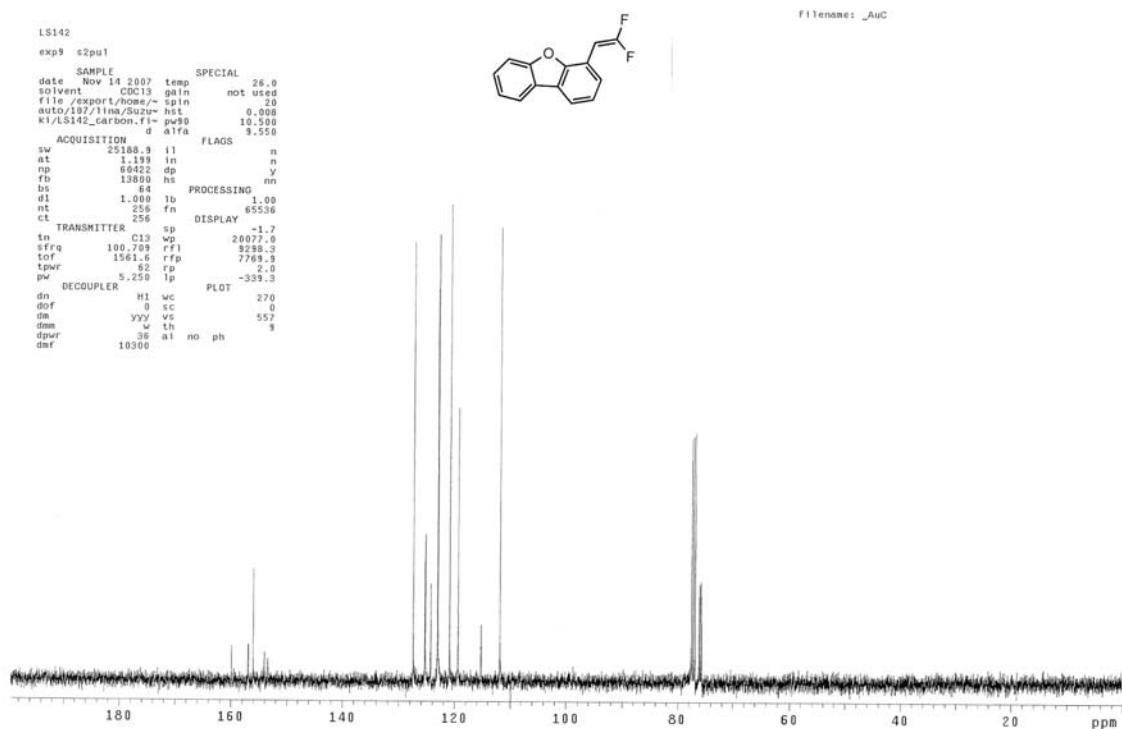
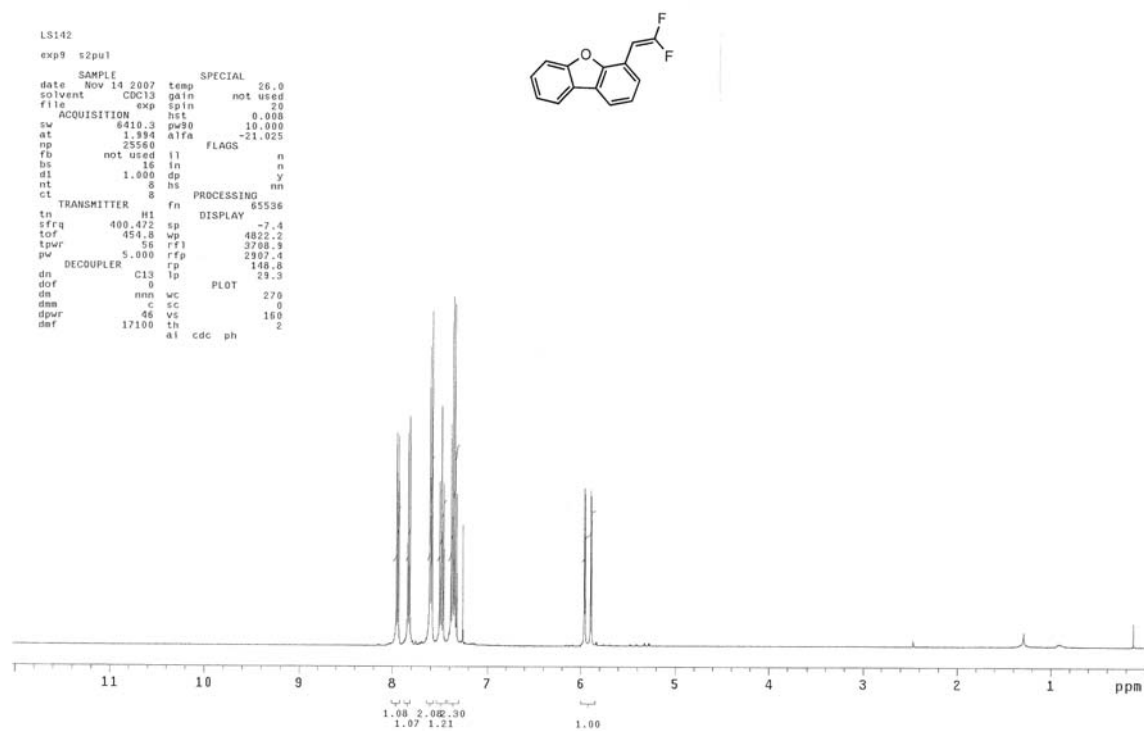


Compound 22

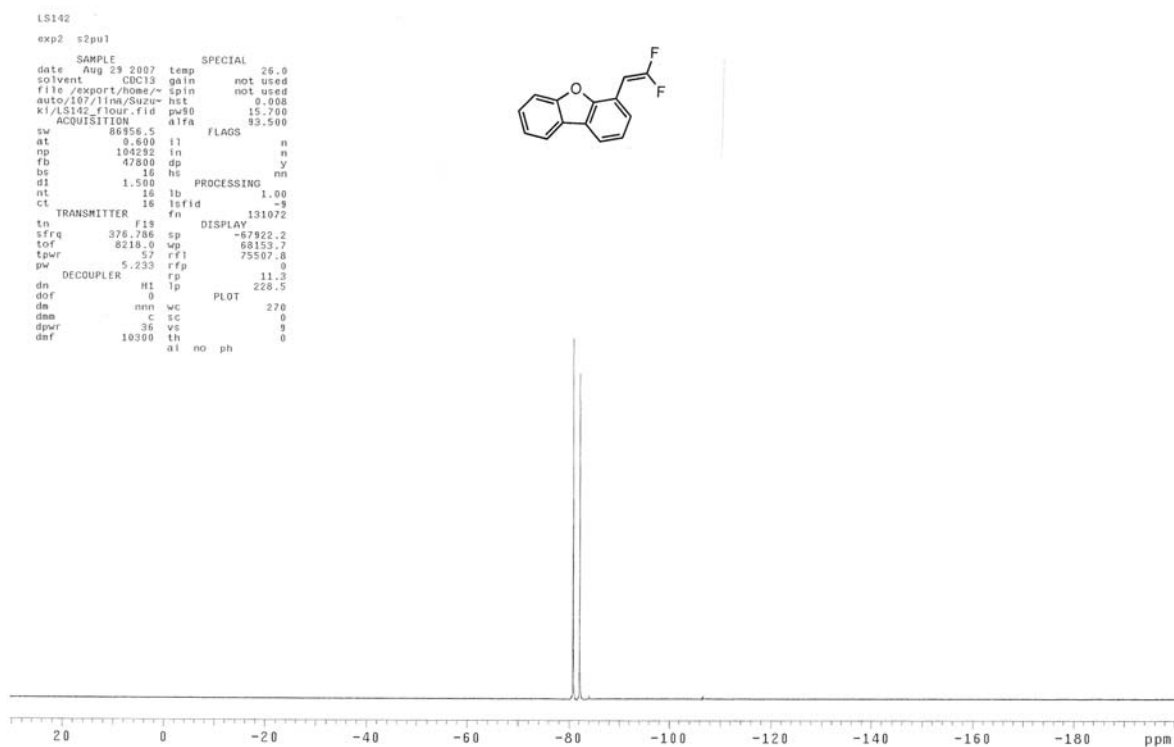




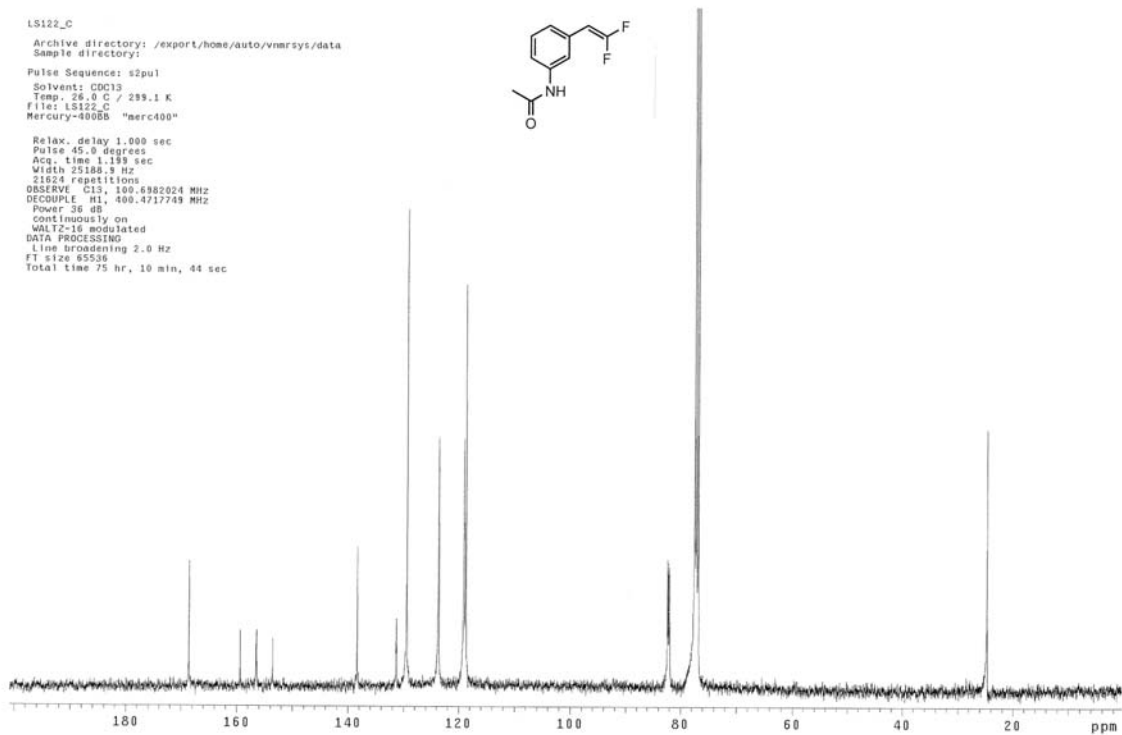
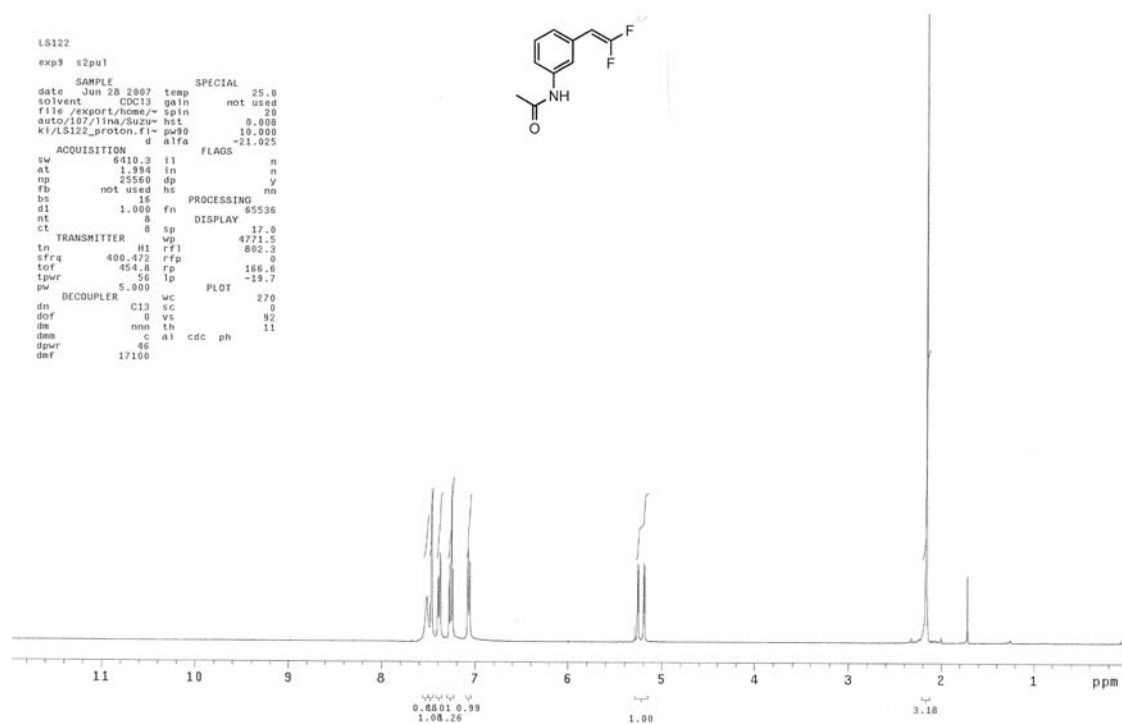
Compound 23

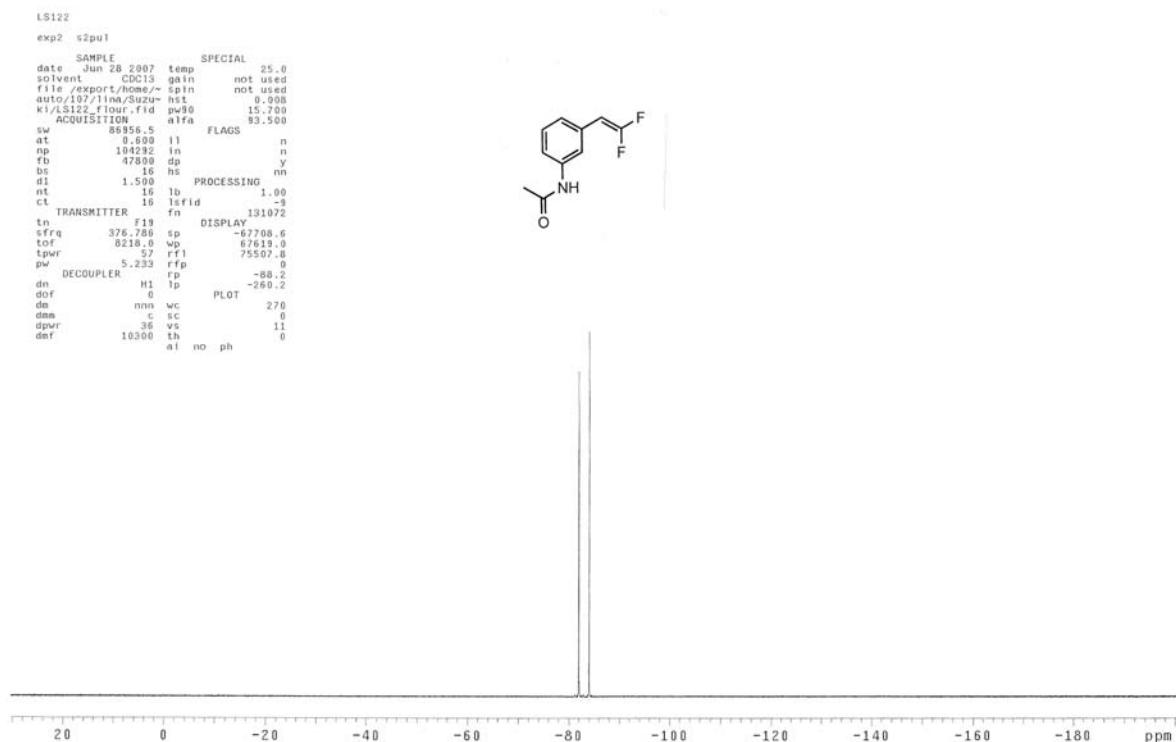


S21

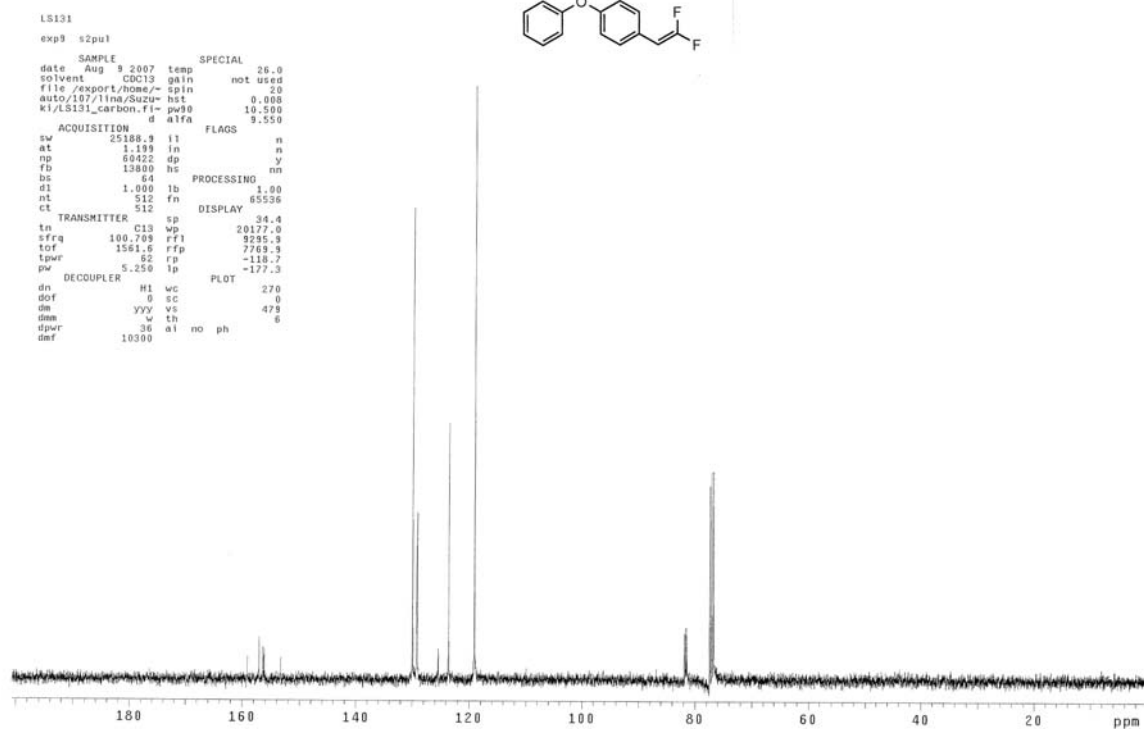
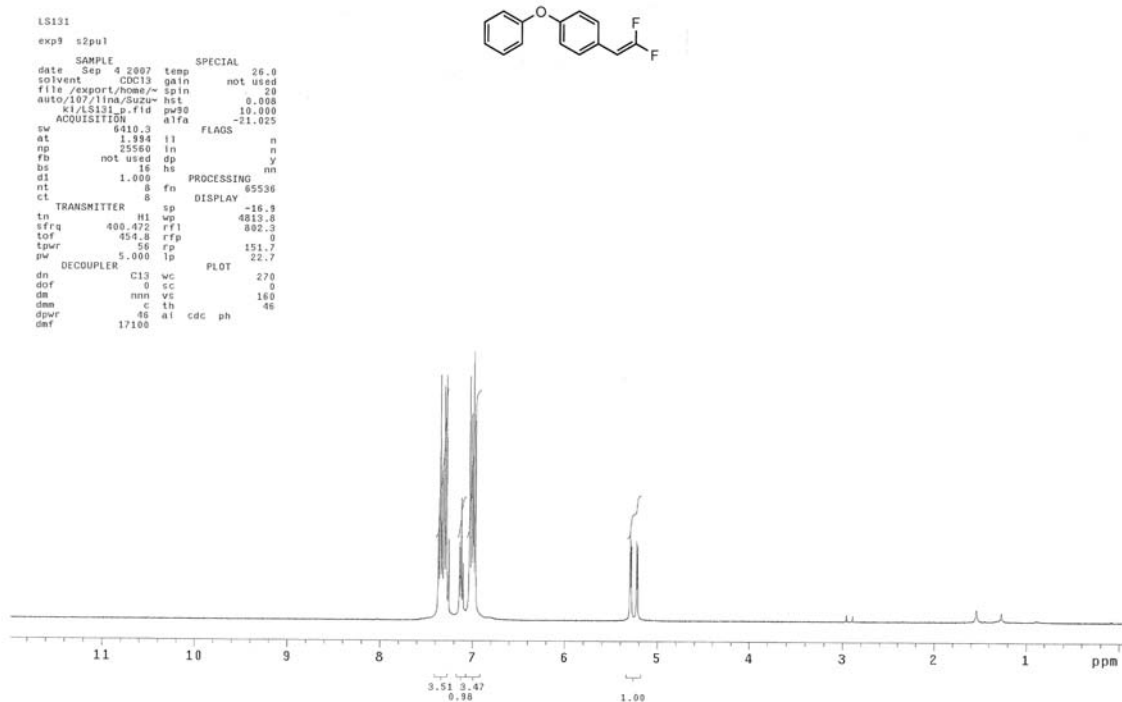


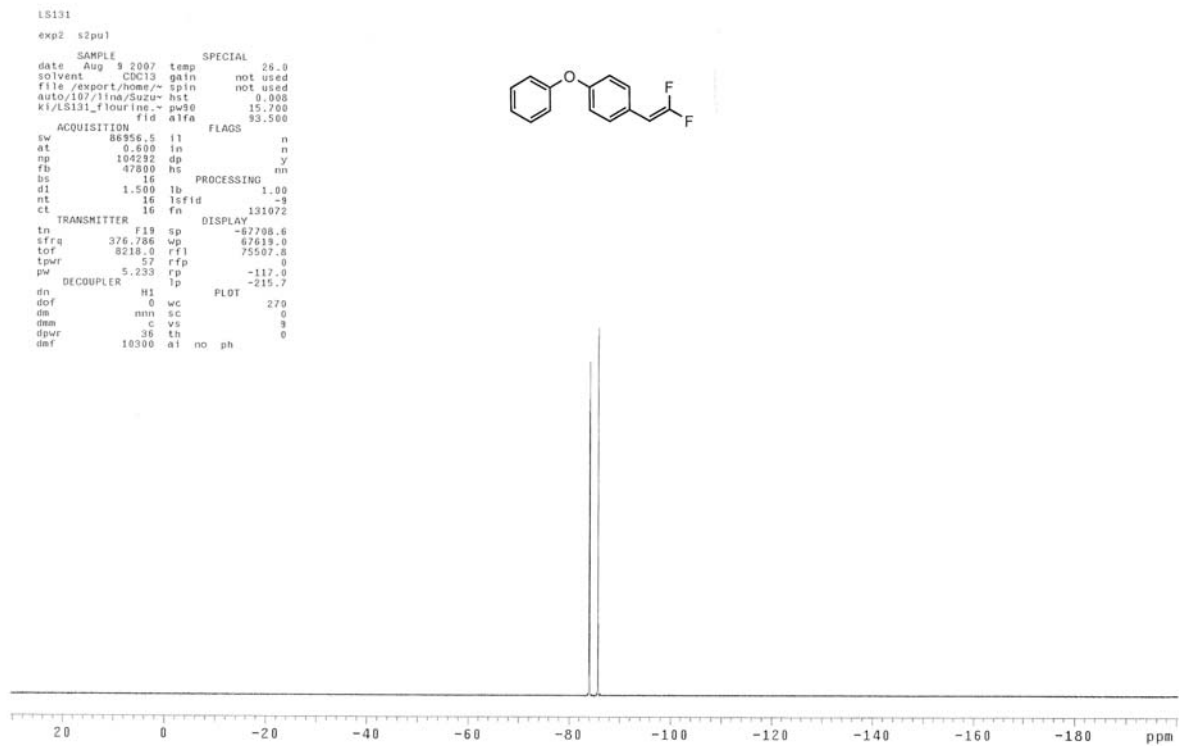
Compound 24



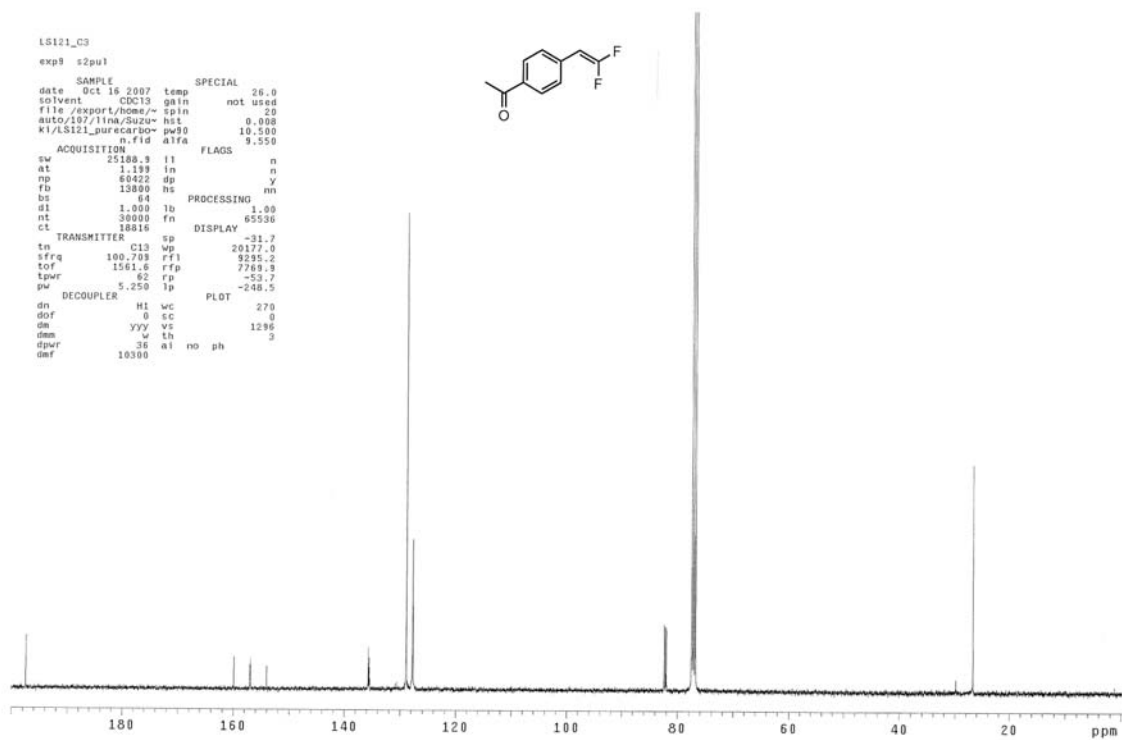
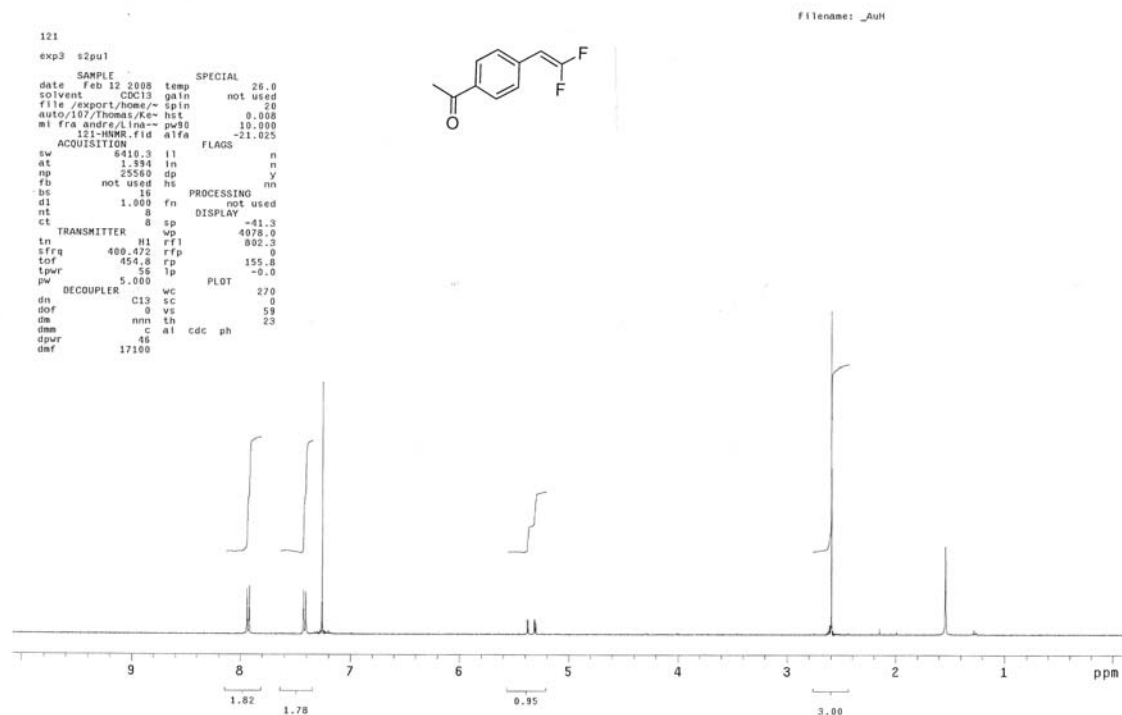


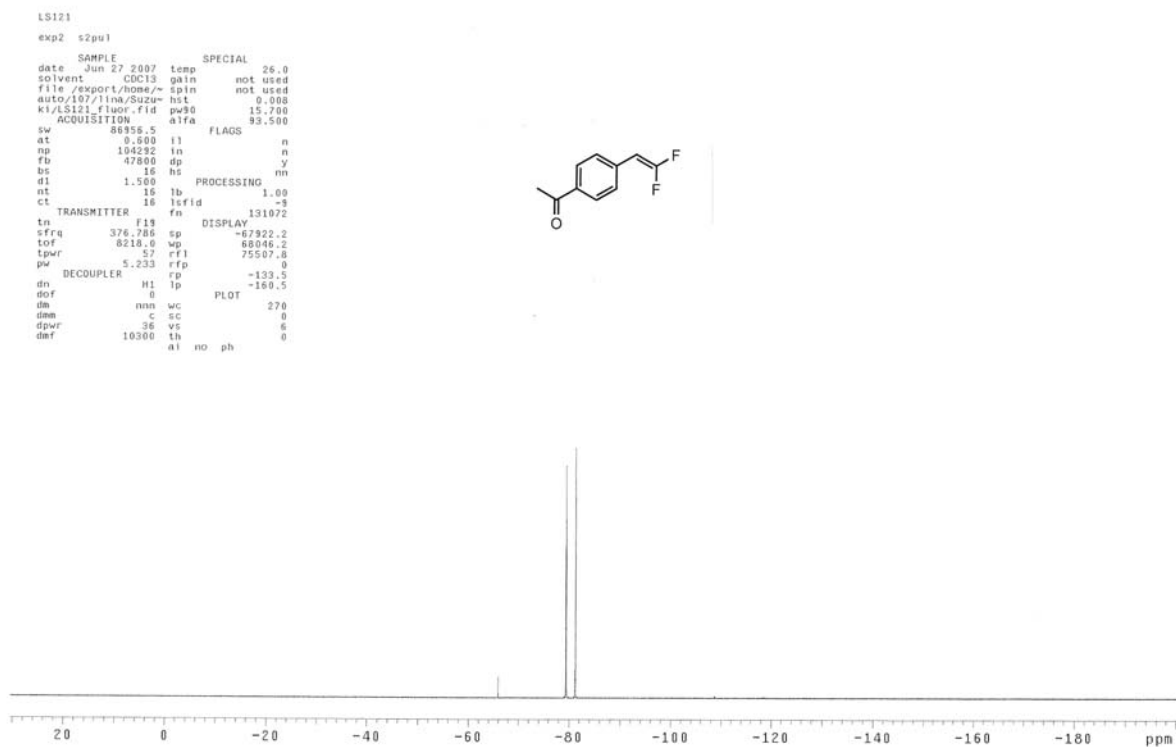
Compound 25



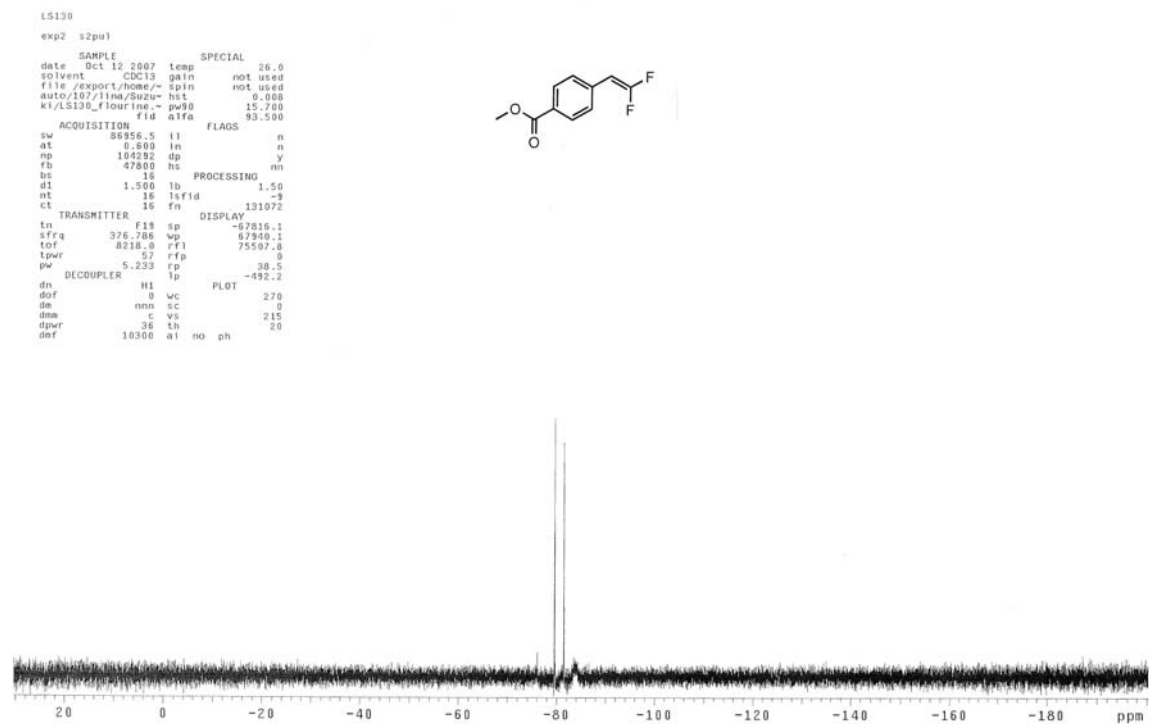
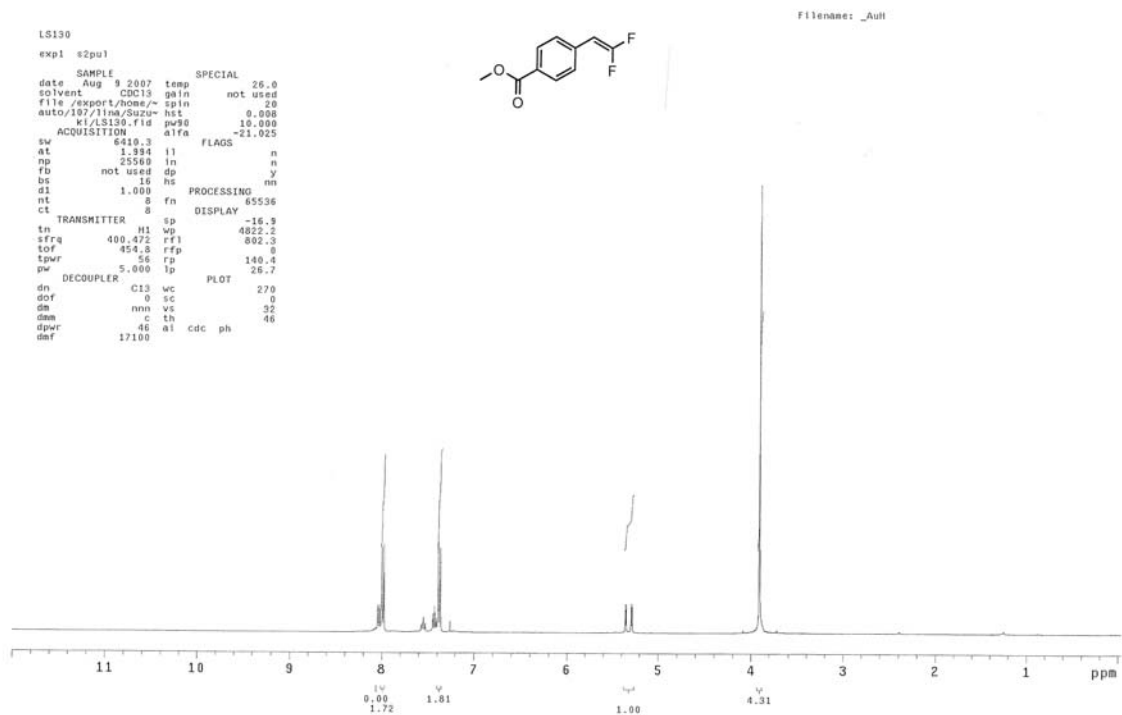


Compound 26

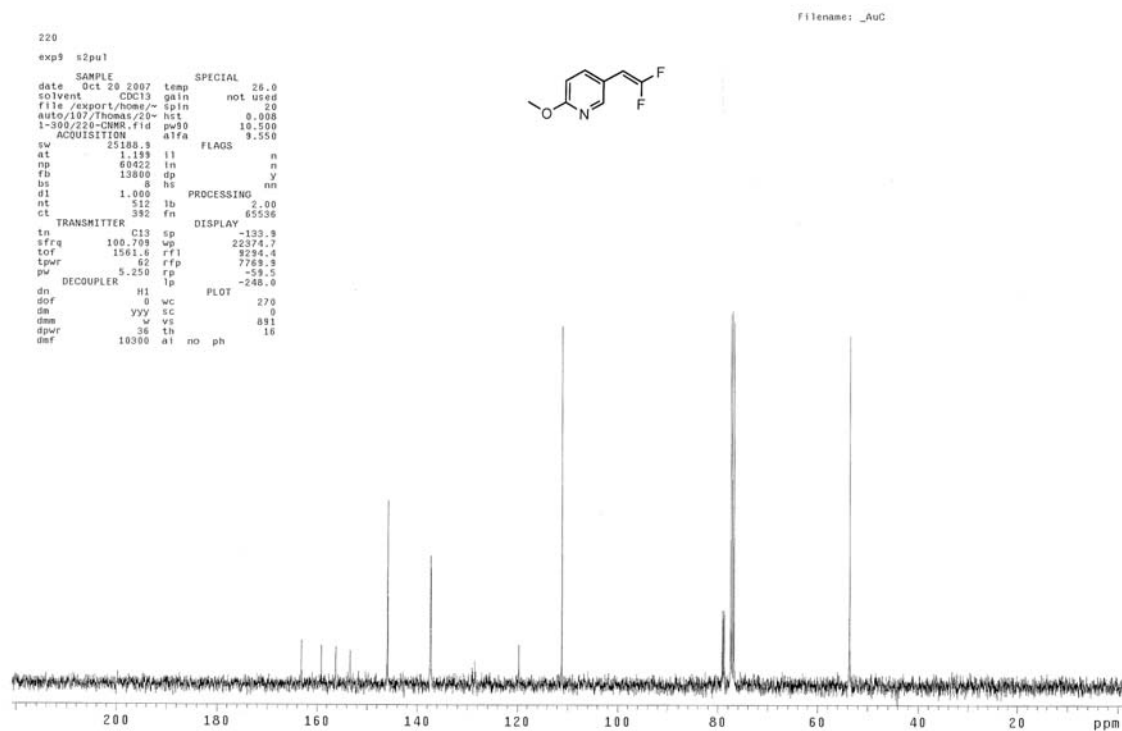
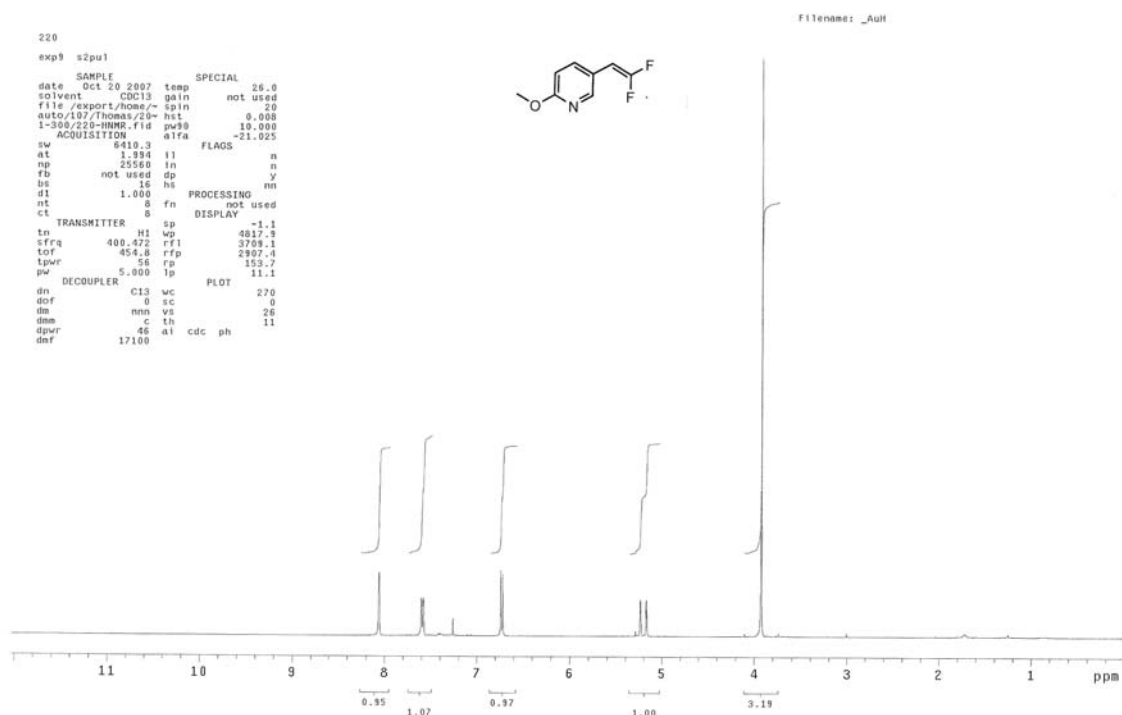


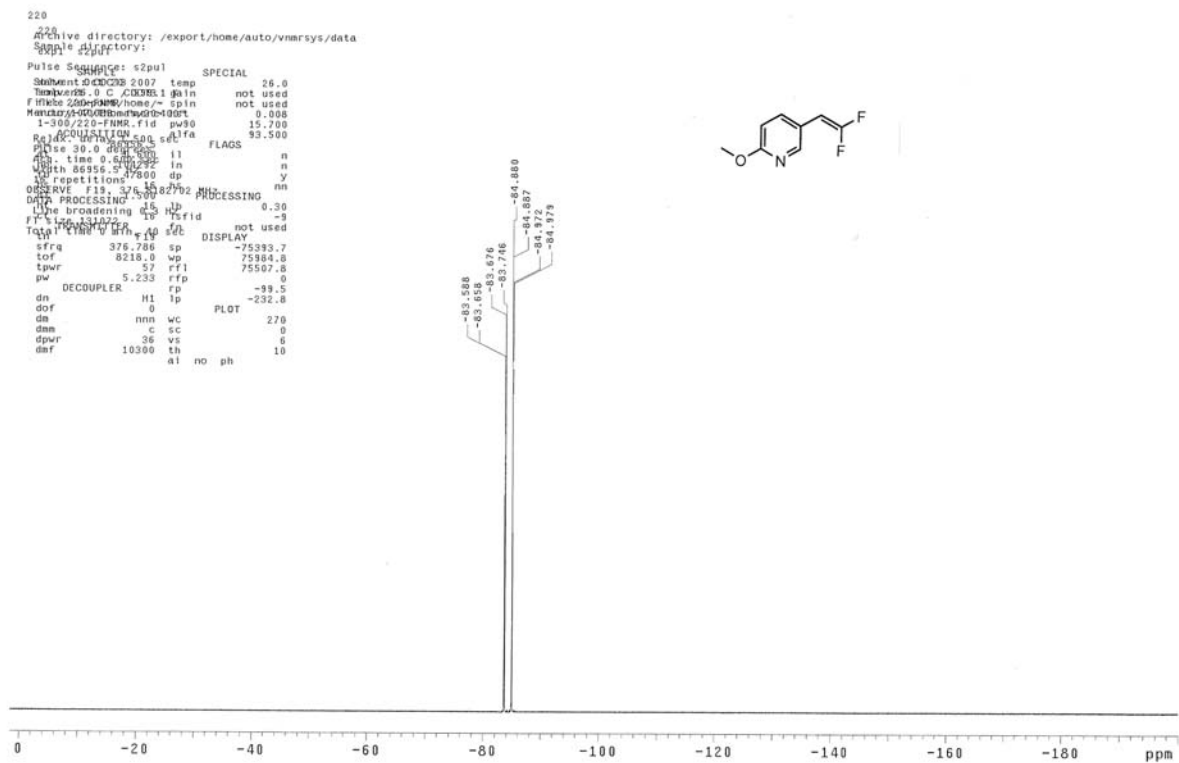


Compound 27



Compound 28





Compound 29

