

Supporting Information

Oleanane-Type Triterpenes from the Flowers and Roots of *Saussurea*

muliensis

Chun-Mei Liu, He-Xiang Wang, Shi-Lei Wei, and Kun Gao^{*}

State Key Laboratory of Applied Organic Chemistry, College of Chemistry and Chemical Engineering, Lanzhou University, Lanzhou 730000, People's Republic of China

Index:

Figure S1. ¹H NMR spectrum of **1** in CD₃OD.

Figure S2. ¹³C NMR (DEPT) spectrum of **1** in CD₃OD.

Figure S3. HRESIMS of **1**.

Figure S4. ¹H NMR spectrum of **2** in CDCl₃.

Figure S5. ¹³C NMR spectrum of **2** in CDCl₃.

Figure S6. HRESIMS of **2**.

Figure S7. ¹H NMR spectrum of **3** in CDCl₃.

Figure S8. ¹³C NMR spectrum of **3** in CDCl₃.

Figure S9. HRESIMS of **3**.

Figure S10. ¹H NMR spectrum of **4** in DMSO-d₆.

Figure S11. ¹³C NMR spectrum of **4** in DMSO-d₆.

Figure S12. HRESIMS of **4**.

Figure S13. ¹H NMR spectrum of **5** in CDCl₃.

Figure S14. The magnified ¹H NMR spectrum of **5** in CDCl₃.

^{*} To whom correspondence should be addressed. Tel: +86-0931-8912592. Fax: +86-931-8912582.
E-mail: npchem@lzu.edu.cn

Figure S15. ^{13}C NMR (DEPT) spectrum of **5** in CDCl_3 .

Figure S16. HRESIMS of **5**.

Figure S17. ^1H NMR spectrum of **6** in CDCl_3 .

Figure S18. ^{13}C NMR (DEPT) spectrum of **6** in CDCl_3 .

Figure S19. HRESIMS of **6**.

Figure S1. ^1H NMR spectrum of **1** in CD_3OD .

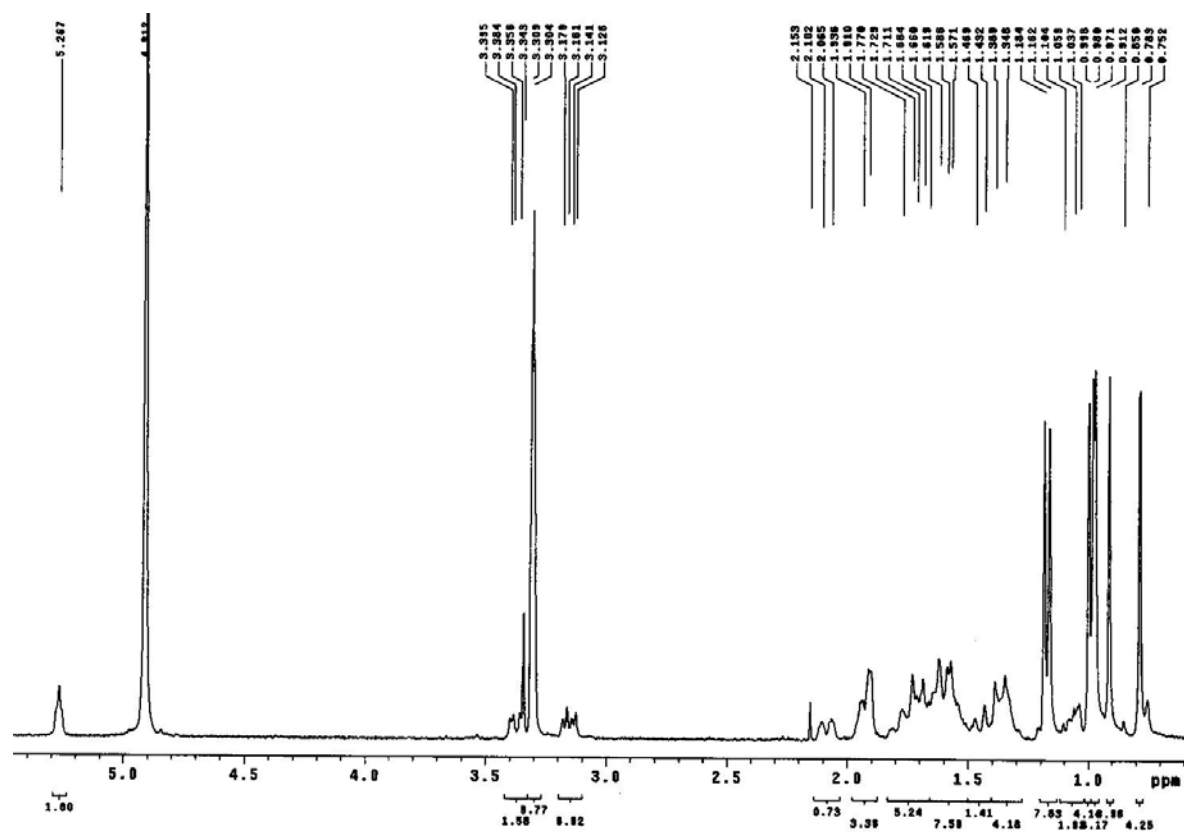
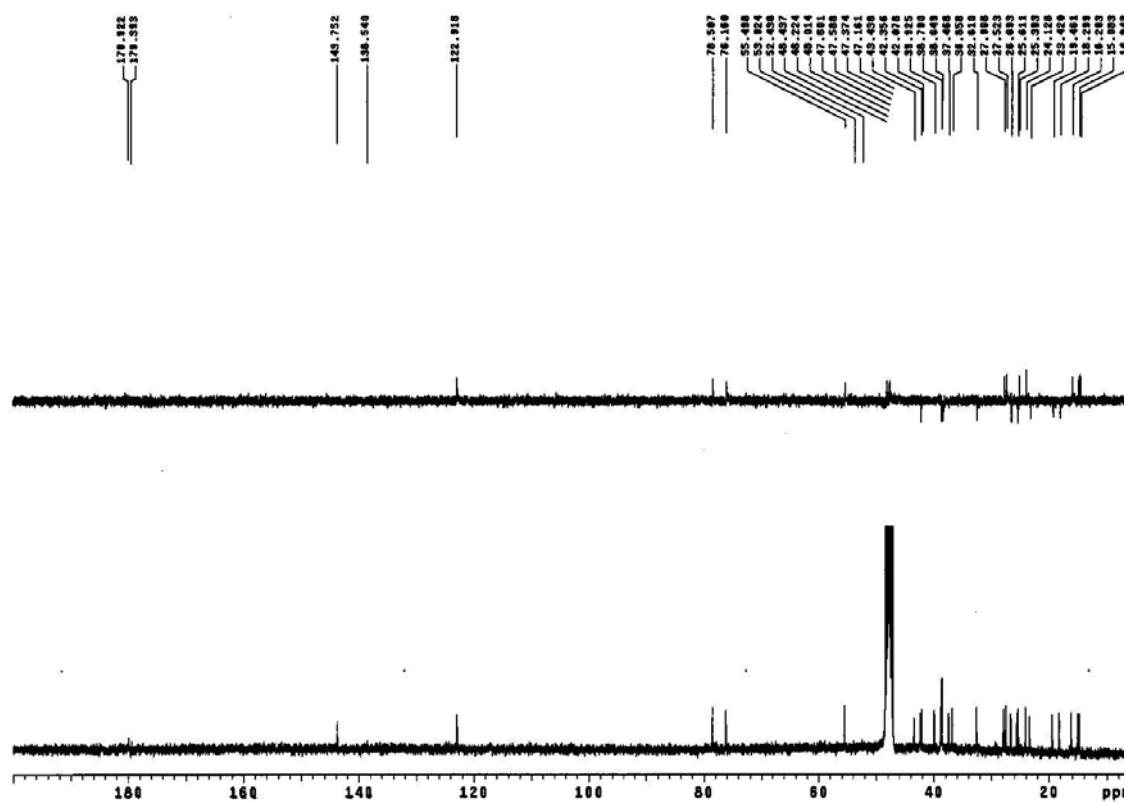


Figure S2. ¹³C NMR (DEPT) spectrum of **1** in CD₃OD.



ESI negative, D138-9, M-H=471.3460, error=0.6ppm, 24/05/2007

Mass spectrum showing relative intensity (0.0 to 1.0) versus m/z (0 to 500). The base peak is at m/z 471.3483. Other labeled peaks include 472.3517 and 561.3798.

m/z	Relative Intensity
471.3483	1.0
472.3517	0.35
561.3798	0.15

Figure S4. ^1H NMR spectrum of **2** in CDCl_3 .

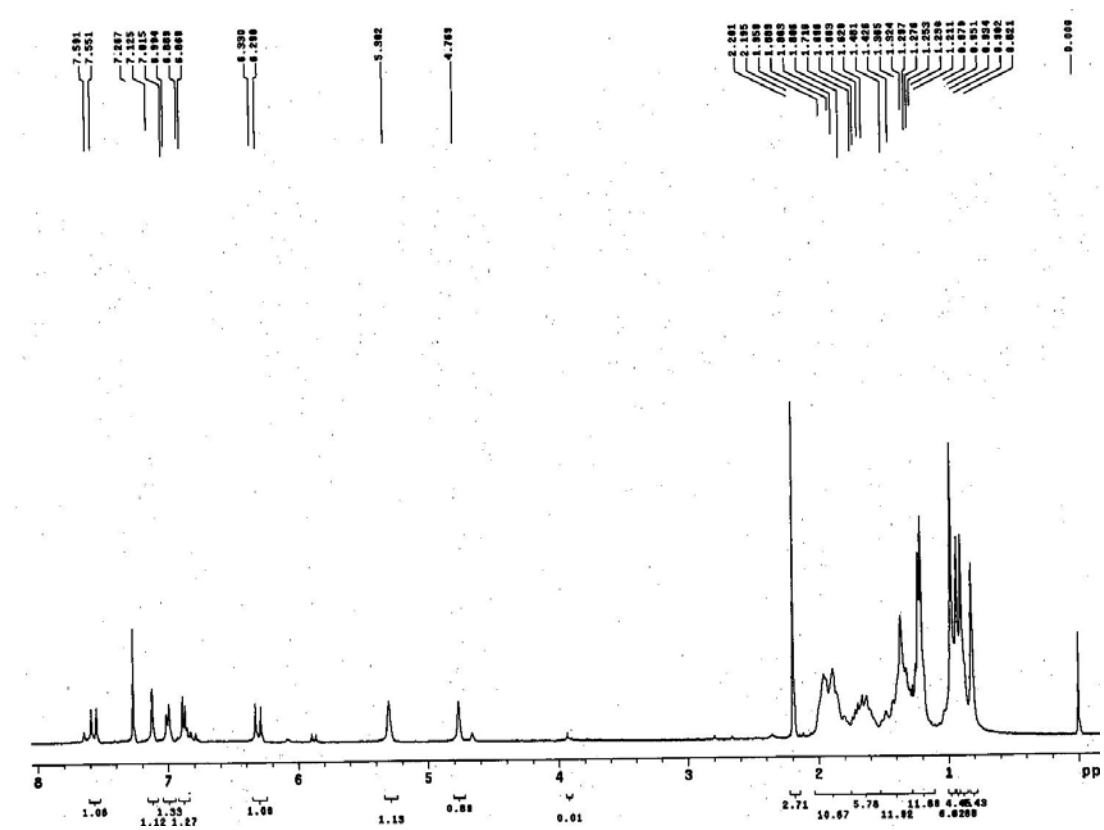


Figure S5. ¹³C NMR spectrum of **2** in CDCl₃.

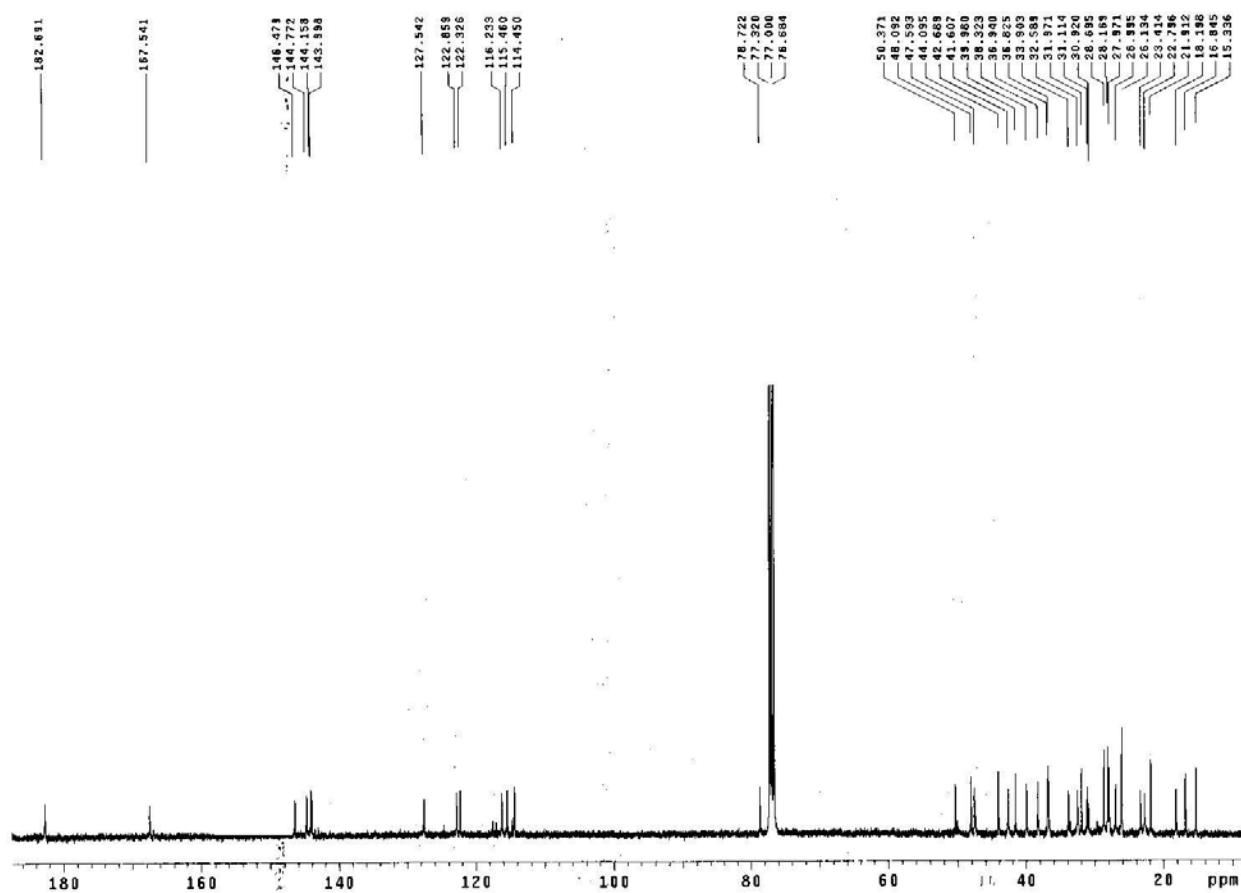


Figure S6. HRESIMS of **2**.

Figure S6

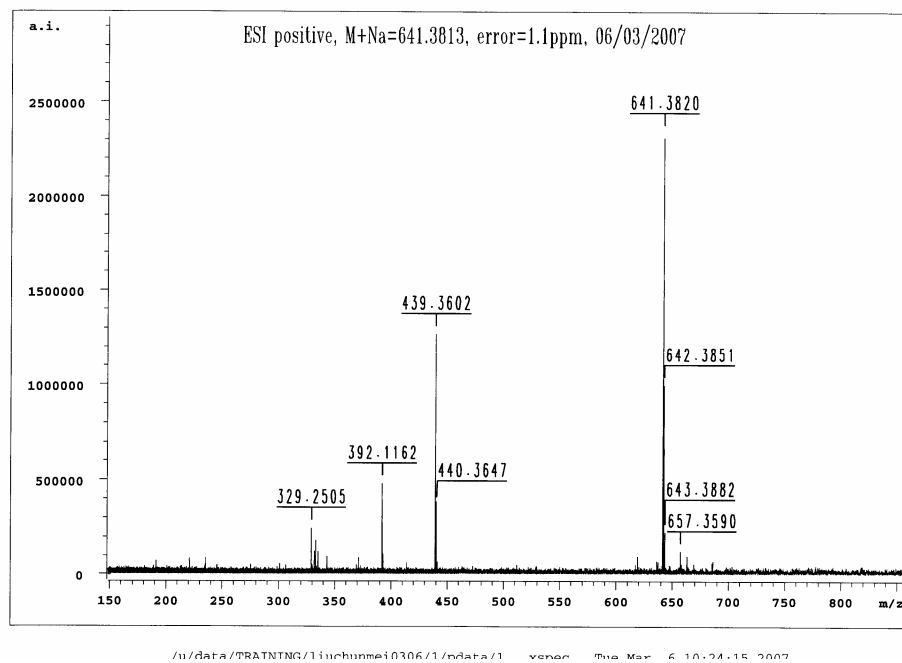


Figure S7. ¹H NMR spectrum of **3** in CDCl₃.

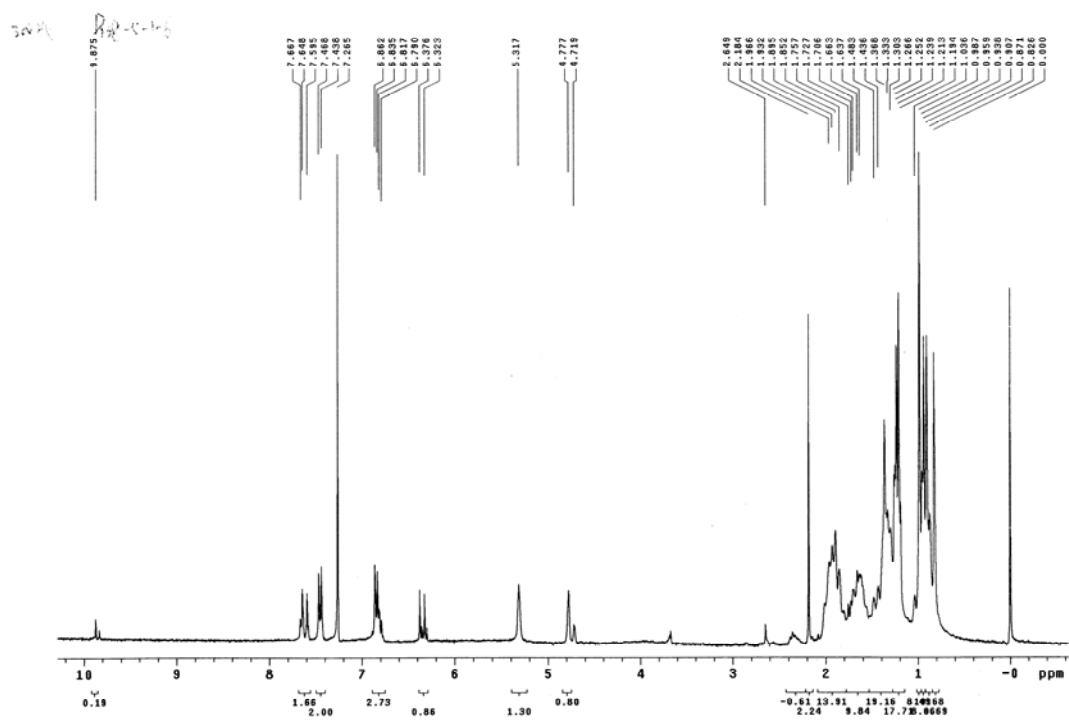


Figure S8. ¹³C NMR spectrum of **3** in CDCl₃.

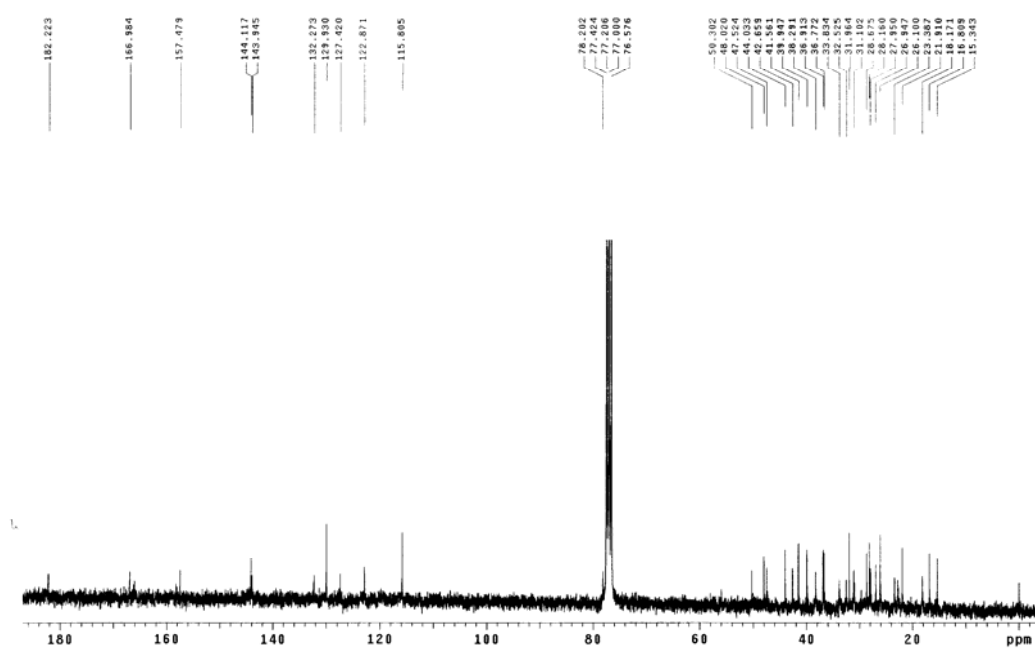
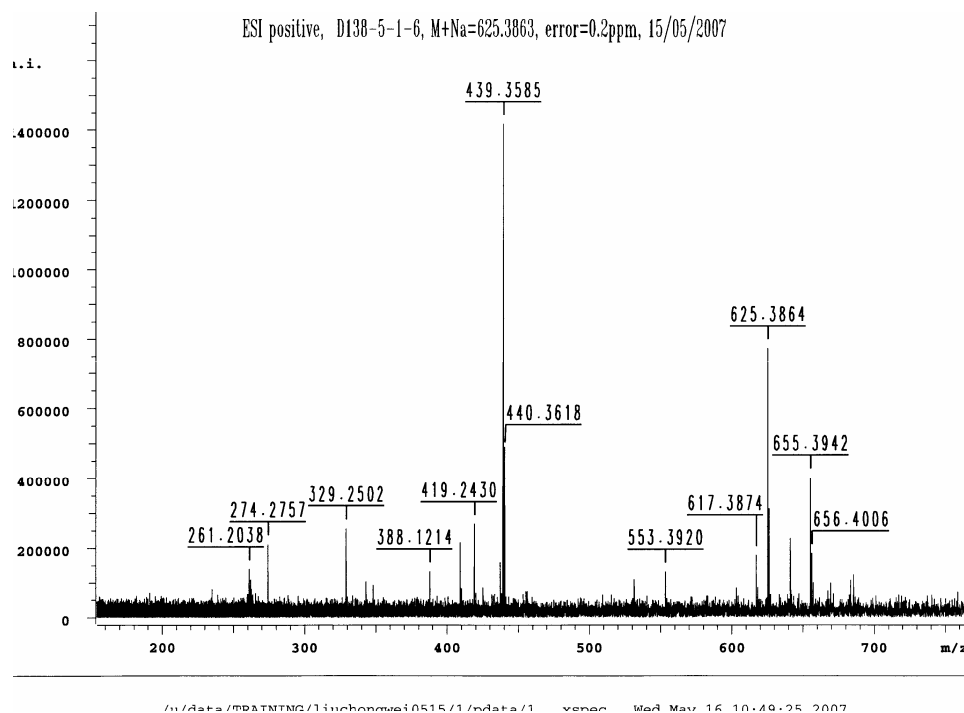


Figure S9. HRESIMS of **3**.



¹H NMR spectrum of 1,2-dichloroethane. The spectrum shows several multiplets in the aromatic region (6.5-7.5 ppm) and a complex set of multiplets in the aliphatic region (0.5-3.5 ppm). The x-axis is labeled in ppm from 5.5 to 0.5.

Peak list (ppm): 5.226, 4.775, 4.763, 4.476, 3.527, 3.520, 3.441, 3.436, 3.413, 3.350, 3.341, 3.181, 3.134, 3.082, 3.072, 3.074, 2.469, 2.318, 2.305, 2.296, 2.286, 2.232, 2.231, 2.051, 2.020, 1.990, 1.983, 1.980, 1.852, 1.843, 1.817, 1.599, 1.571, 1.489, 1.488, 1.441, 1.441, 1.408, 1.376, 1.376, 1.258, 1.278, 1.243, 1.198, 1.142, 1.142, 1.084, 1.038, 1.025, 1.021, 0.884, 0.825, 0.788, 0.781.

Integrations: 0.00, 0.00, 1.00, 1.10, 1.27, 1.00, 2.34, 7.30, 3.00, 2.10, 3.00, 1.10, 7.00, 3.00.

Figure S11. ¹³C NMR spectrum of **4** in DMSO-d₆.

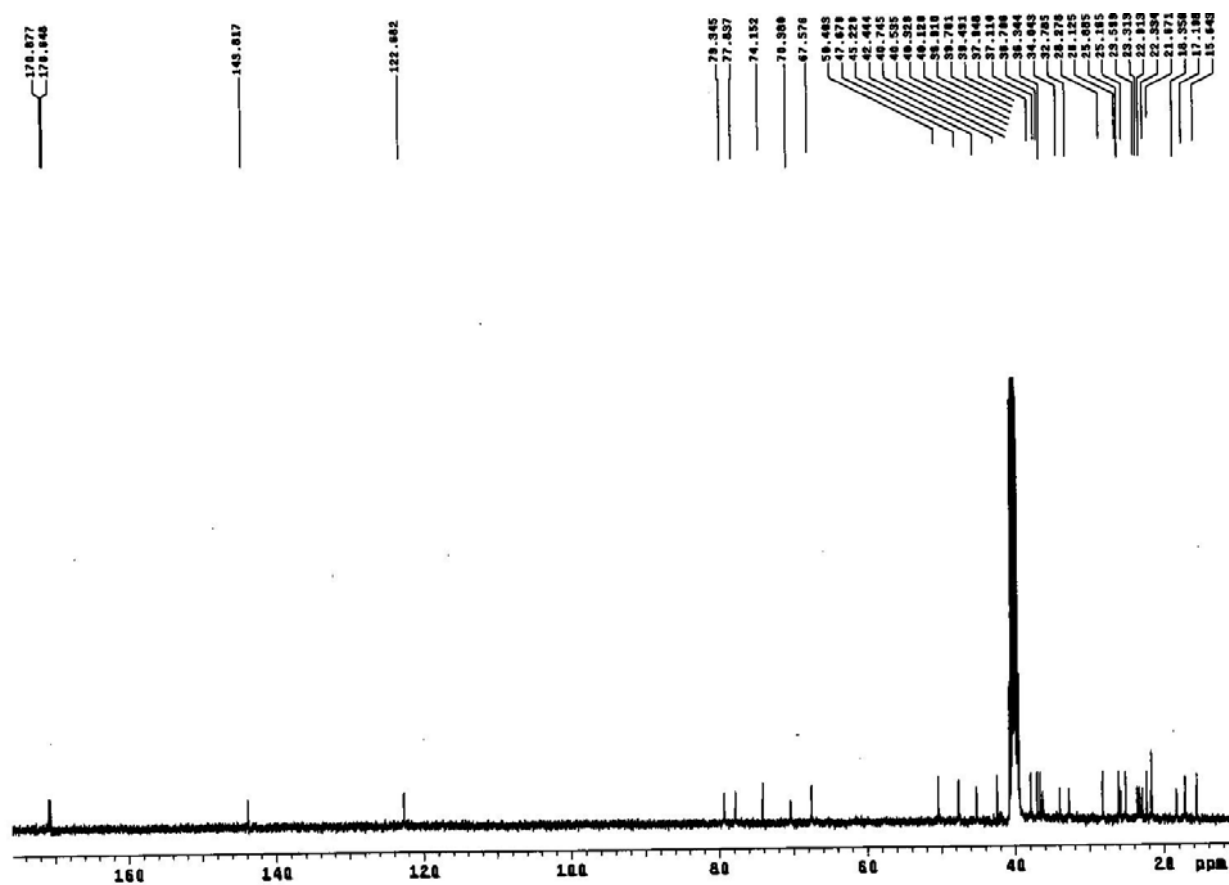


Figure S12. HRESIMS of **4**.

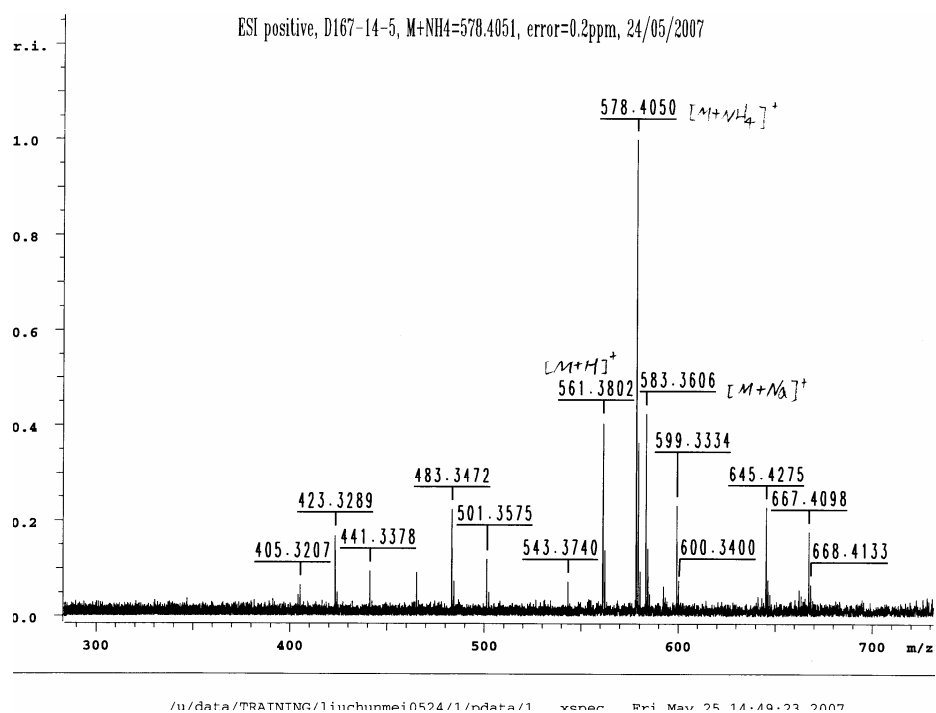


Figure S13. ¹H NMR spectrum of **5** in CDCl₃.

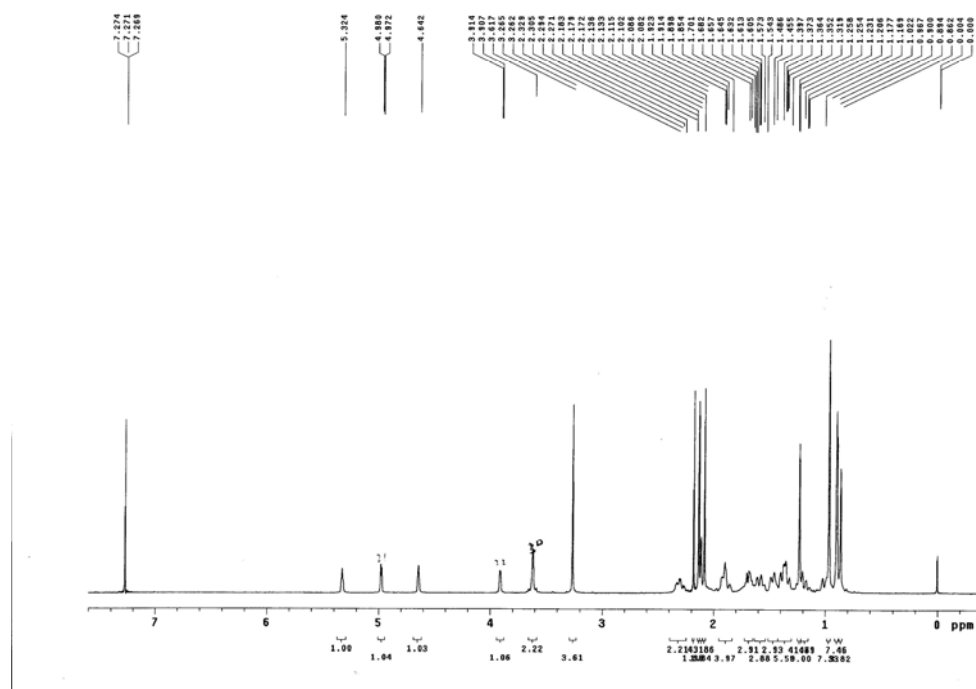


Figure S14. The magnified ^1H NMR spectrum of **5** in CDCl_3 .

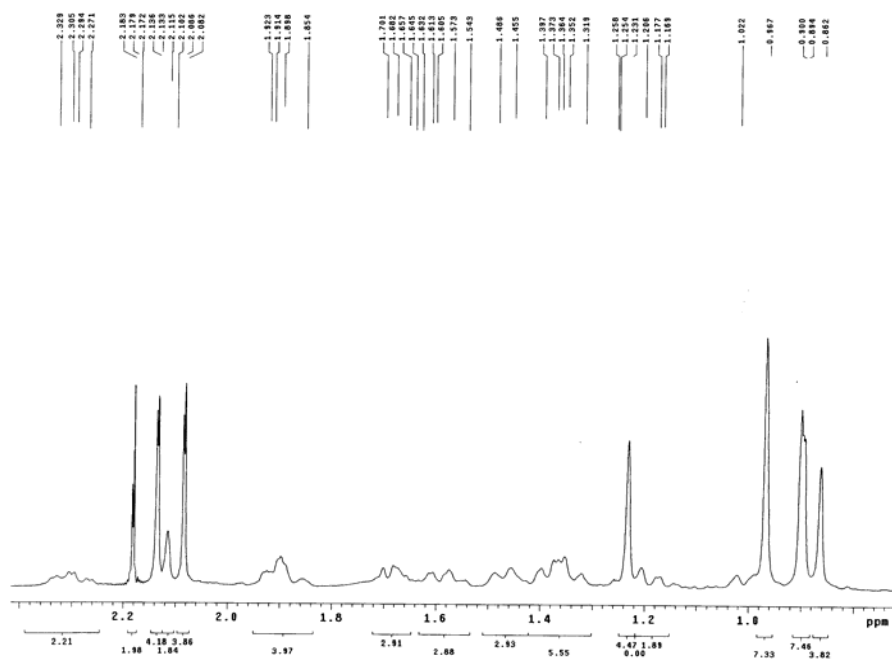


Figure S15. ¹³C NMR(DEPT) spectrum of **5** in CDCl₃.

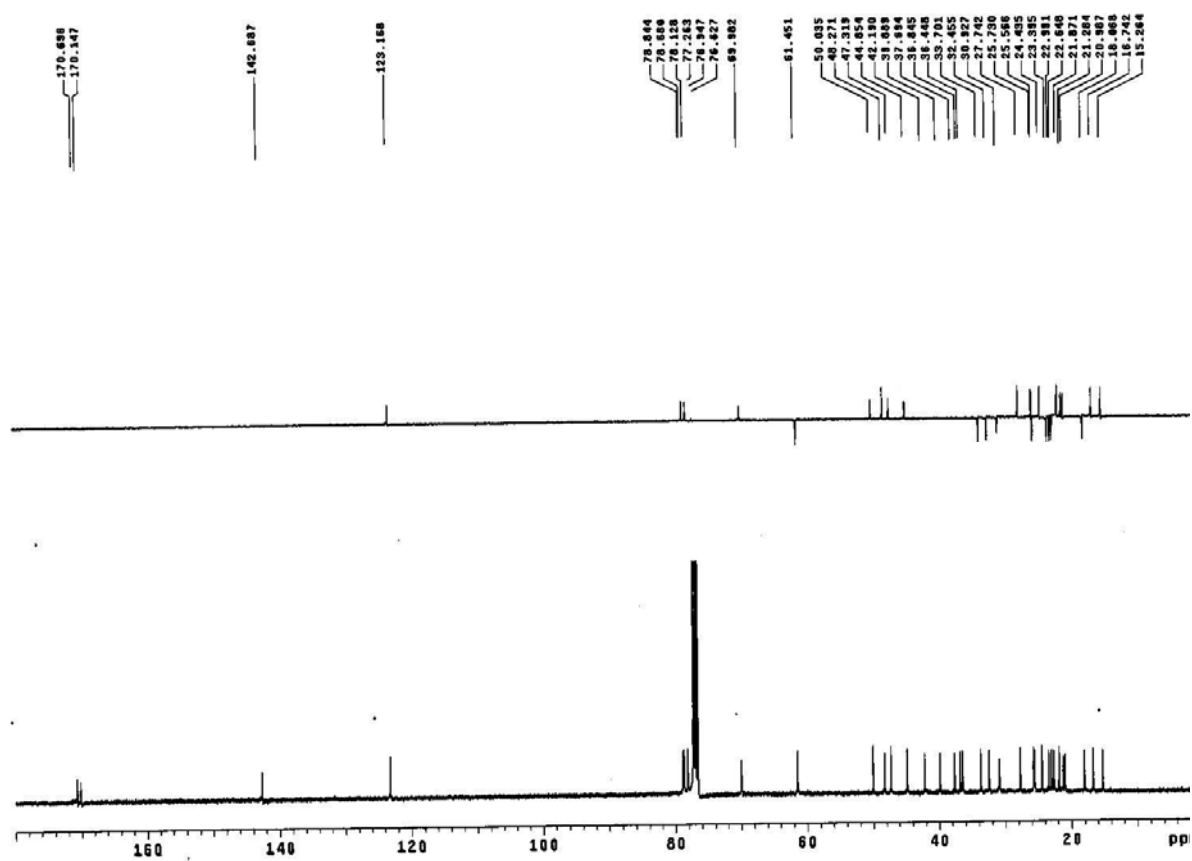


Figure S16. HRESIMS of **5**.

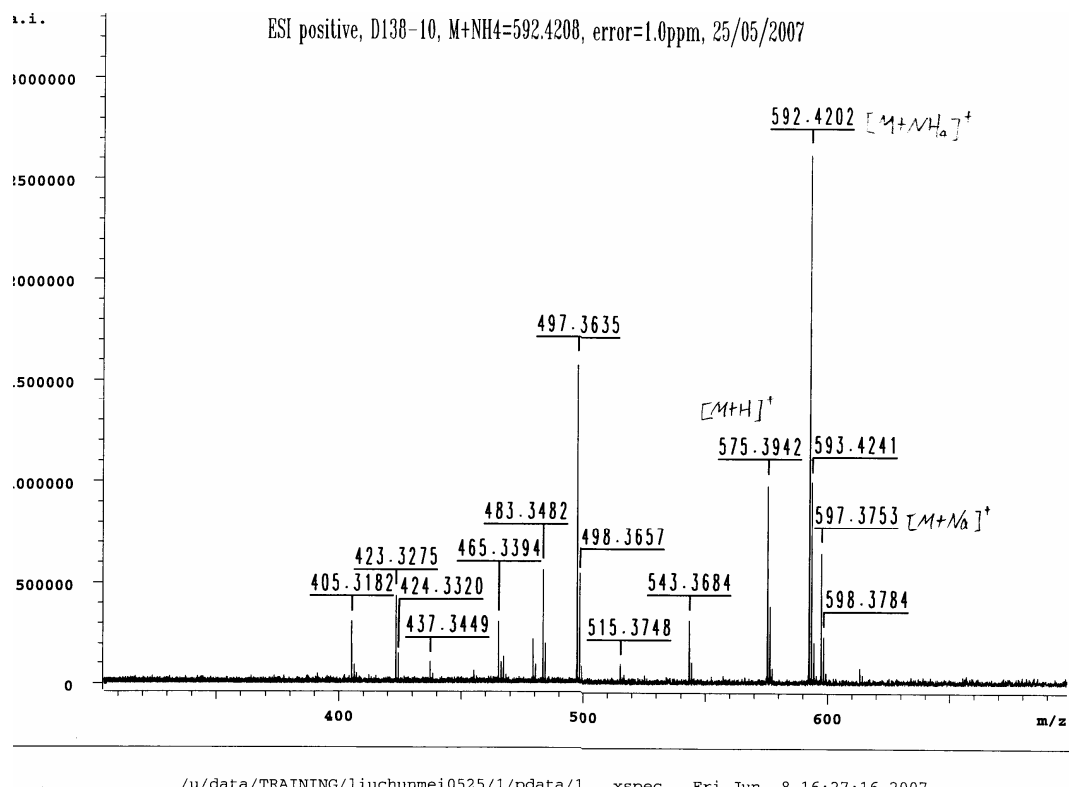
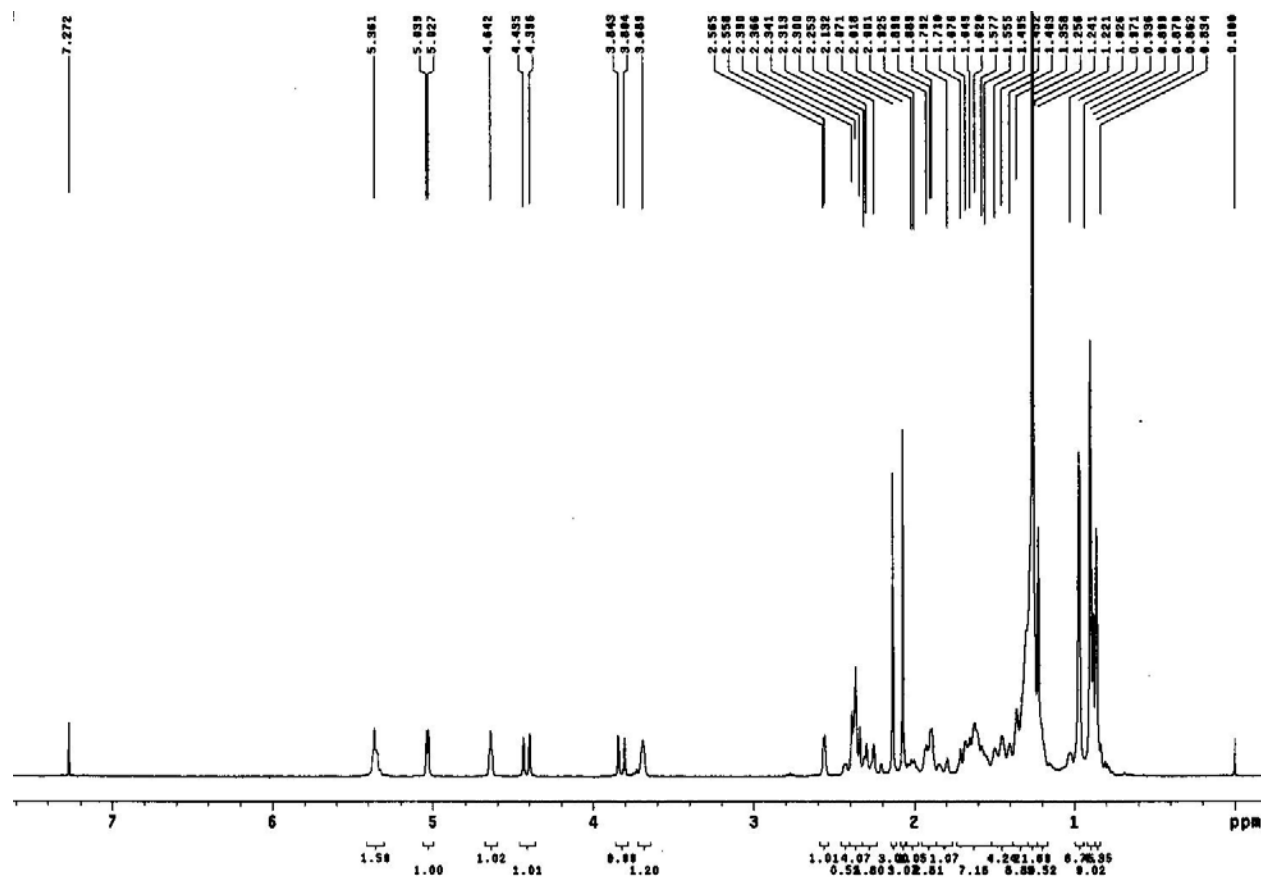


Figure S17. ^1H NMR spectrum of **6** in CDCl_3 .



13

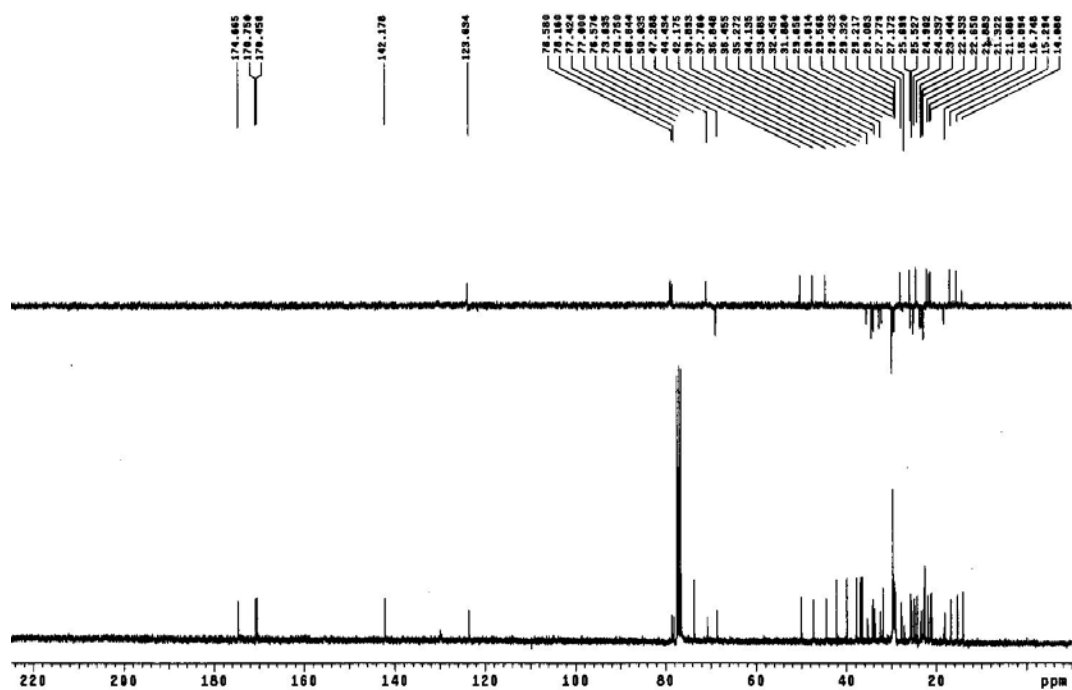


Figure S19. HRESIMS of **6**.

