

Supporting Information

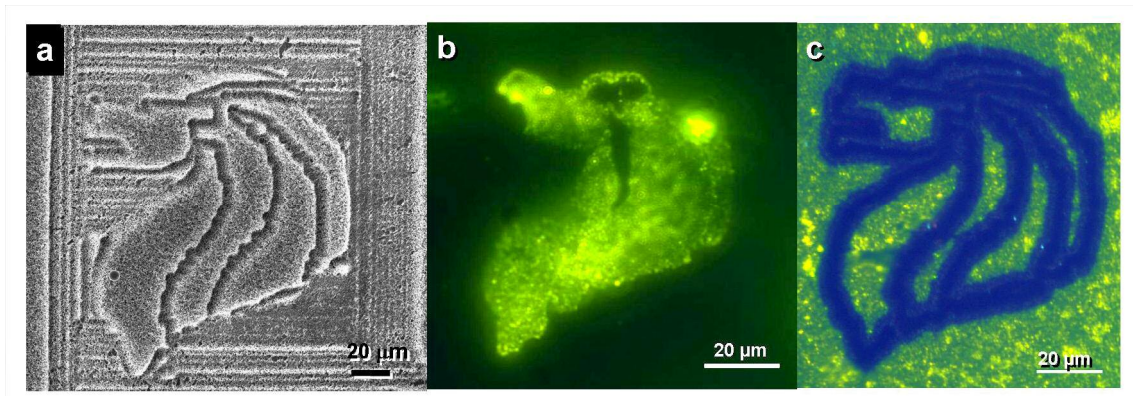


Figure S1. (a) SEM image of ‘Merlion’ pattern being pruned on as-grown MWCNTs sample. FM images of (b) distortion of pre-patterned ‘Merlion’ on MWCNTs after Toluene has evaporated; (c) distinct image of CdSe/ZnS QDs decorated ‘Merlion’ using proposed second method of assembly. Cause of the thicker line width in (c) were attributed to destruction of surrounding QDs by heat produced due to interactions between laser and MWCNTs. (All three images were created on different samples out of the same batch of samples grown)